

ADDENDUM FOR THE DLP PROJECTOR

About this Document

This document is intended for network administrators.

Copyright

This publication, including all photographs, illustrations and software, is protected under international copyright laws, with all rights reserved. Neither this document, nor any of the material contained herein, may be reproduced without written consent of the author.

© Copyright July 2004

Disclaimer

The information in this document is subject to change without notice. The manufacturer makes no representations or warranties with respect to the contents hereof and specifically disclaims any implied warranties of merchantability or fitness for any particular purpose. The manufacturer reserves the right to revise this publication and to make changes from time to time in the content hereof without obligation of the manufacturer to notify any person of such revision or changes.

Trademark Recognition

All product names used in this document are the properties of their respective owners and are acknowledged.

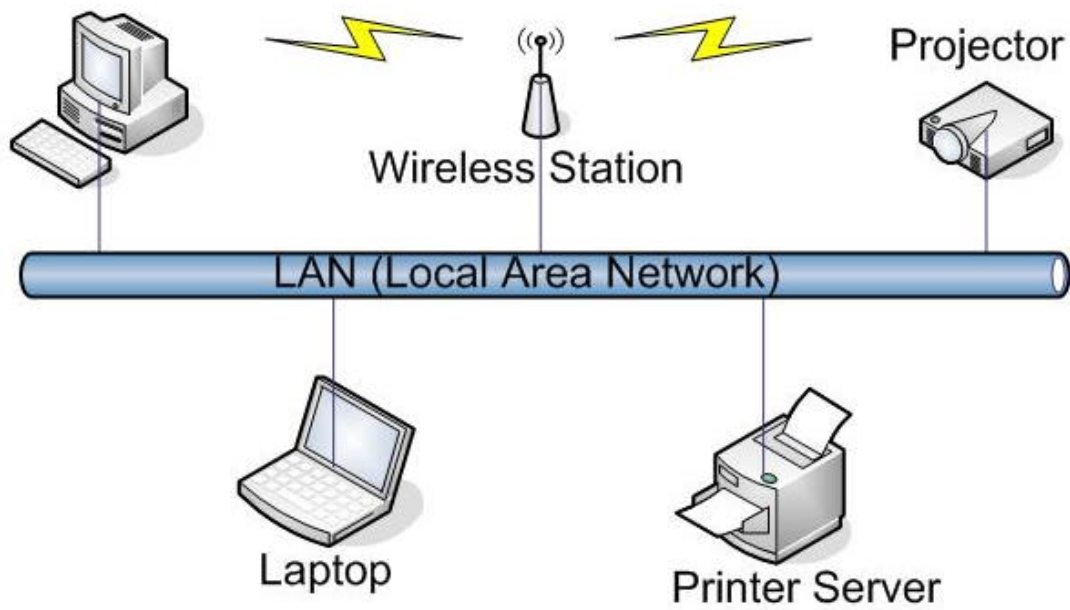
**Table of
contents**

REMOTE NETWORK OPERATION 3
 Using a Static IP Address 3
THE REMOTE INTERFACE OVERVIEW 6
 Remote 6
 Remote-2 6
 Administrator Settings 6
 IP Settings 7
 E-mail Settings 7
SETTING UP REMOTE OPERATION 8
 Using the DHCP Address Settings 8
 Enabling and Disabling Passwords 10
 Setting the Maximum Connections 11
 Retrieving a Forgotten Password 12

Remote Network Operation

When connected to a Local Area Network (LAN) by means of the RJ-45 connector, the projector can be controlled remotely through a Web browser or by any of the clients (PCs connected to the LAN) on the LAN. The projector can also be accessed outside the LAN, provided a firewall is configured accordingly.

PC for Remote Projector



Using a Static IP Address

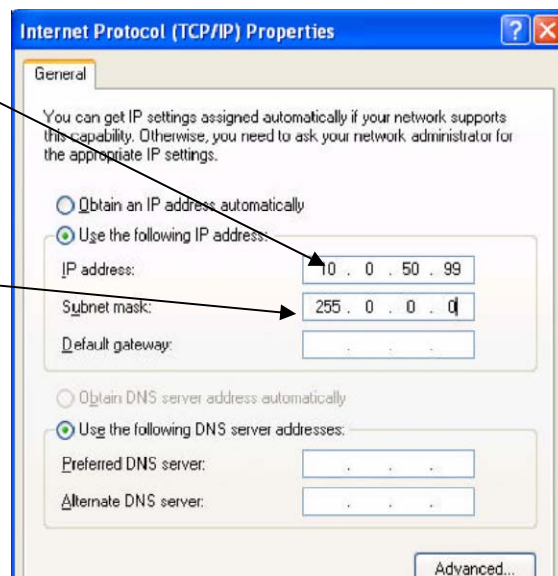
Set the IP Setting to **Static IP Address** if you want the projector to have a **permanent** IP address.

The following screens may vary depending on the operating system you are using.

1. From the **Local Area Connection Properties** window, open the **Internet Protocol (TCP/IP) Properties** window.

2. Set the IP address:
10.0.50.99

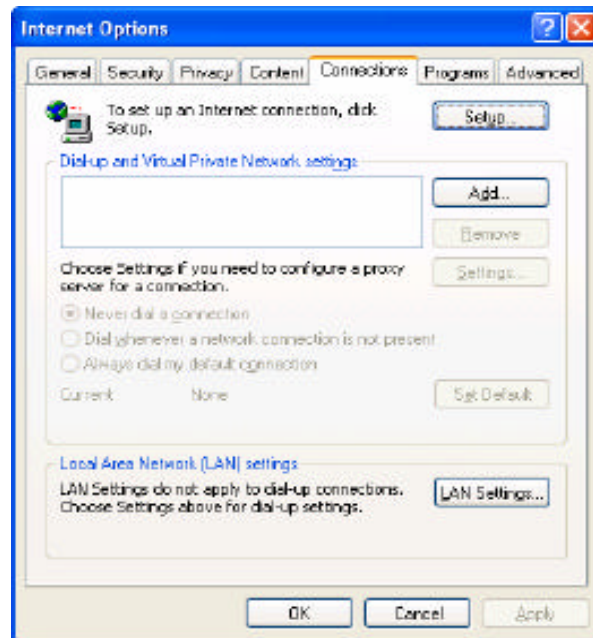
3. Set the Subnet mask:
255.0.0.0



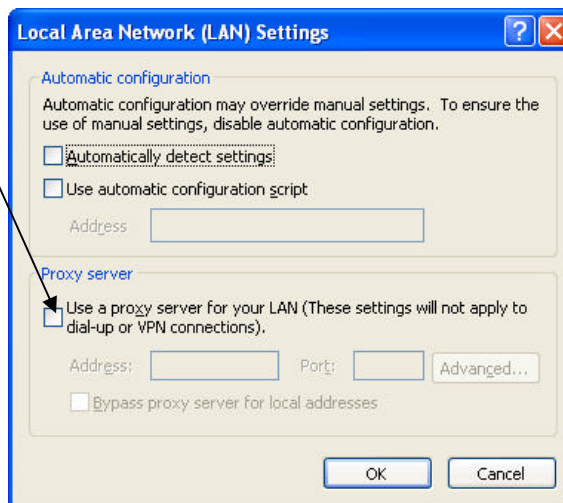
4. Click **OK**.

- To prevent messages being filtered between the remote PC and the projector, disable the proxy server in your Web browser.

From the Internet Options window, click **LAN Settings...**



- In the **Local Area Network (LAN) Settings** window, make sure the **Proxy server** check box is not checked. Click **OK**.



2. Enter the address of the projector in the address bar of your browser (internet explore or Firefox) and click go **http://10.0.50.10**

The **Remote** page opens.

[Remote](#)
[Remote-2](#)
[Administrat-Setting](#)
[IP-Setting](#)
[E-Mail-Setting](#)

Remote

Power State : Power ON Power OFF

Current-Source : RGB DVI VIDEO S-VIDEO DVD HDTV

Scaling Mode : 4:3 16:9

Projection Mode : Front Rear+Ceiling Rear Ceiling

Color Temperature : Normal Cool Warm User

Brightness : 17 Contrast : 47 Color : 50 Tint :

Software Version : IBA00231 Lamp Hour : 0

The Remote Interface Overview

The following shows the remote interface main screens.

Remote

This screen shows the current status of the projector.



Remote-2

This screen is used to control the projector.



Administrator Settings

This screen allows the administrator to set a password and limit connections to the projector.



IP Settings

This screen allows the IP address to be set for static or DHCP.

[Remote](#)
[Remote-2](#)
[Administrate-Setting](#)
[IP-Setting](#)
[E-Mail-Setting](#)

E-mail Settings

Status messages for the Projector can be emailed to the administrator or any other address.

Some servers require a sender address, otherwise the email is blocked. So in most cases the **Sender** and **Receiver** addresses will be the same.

The projector automatically emails status messages, such as IP address, and Power state as shown below to the **Receiver** address. The projector cannot receive e-mails.

[Remote](#)
[Remote-2](#)
[Administrate-Setting](#)
[IP-Setting](#)
[E-Mail-Setting](#)

Setting up Remote Operation

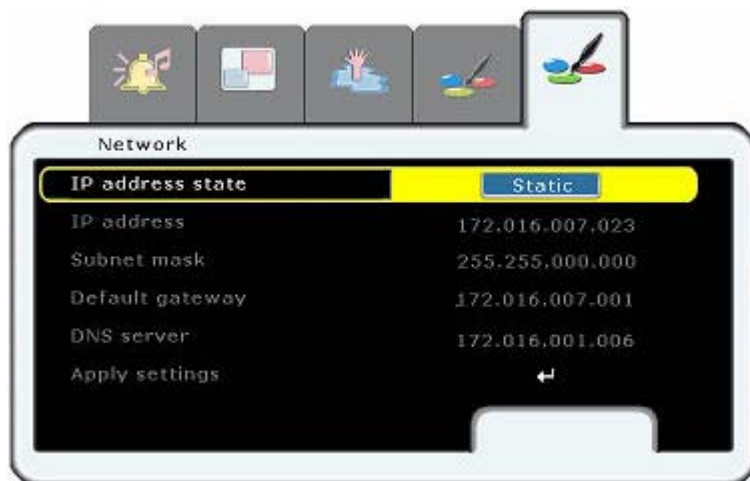
You should know some or all of the following address settings:

- IP Address
- Subnet Mask
- Default Gateway
- DNS Server
- E-mail addresss for remote PC
- Password (if required) for remote PC
- Outgoing server (SMTP) for remote PC

Important:

Using a proxy server for your LAN may filter messages from the projector. Disable the proxy server to prevent this.

The factory default IP address for the projector is **DHCP on**. If this address has been changed, you can find the current IP address in the OSD Status of the projector.



Using the DHCP Address Settings

Set the IP Setting to DHCP if you are using a DHCP server that will assign an IP address to the projector.

1. Enter the address of the projector in the address bar of your browser: **http://10.0.50.10**

The **Remote** page opens.

[Remote](#)
[Remote-2](#)
[Administrate-Setting](#)
[IP-Setting](#)
[E-Mail-Setting](#)

 Static IP address DHCP address'. There are four input fields: 'IP Address' with value '10.0.50.100', 'Subnet Mask' with value '255.0.0.0', 'Default Gateway' with value '0.0.0.0', and 'DNS Server' with value '0.0.0.0'. At the bottom, there are two buttons: 'Set' and 'Restart'."/>

IP-Setting

IP address STATE : Static IP address DHCP address

IP Address	10.0.50.100
Subnet Mask	255.0.0.0
Default Gateway	0.0.0.0
DNS Server	0.0.0.0

2. Click **IP Settings**.
3. Check the **DHCP Address** button and click **Set**.

Enabling and Disabling Passwords

The default setting is **Disable** and no password has been set.

1. Click **Administrator Settings.** The **Administrator Settings** page opens.

2. Check the **Enable** button and then click **Set.**
or
Choose the **Disable** button and then click **Set.**

3. Click your browser back button to go to the **Input PASSWORD** box.

4. Enter the password and click **Login.**

Setting the Maximum Connections

Refer to the following to limit the amount of users that can log on to the projector.

1. Click **Administrator Settings** To open the browser page.

[Remote](#)
[Remote-2](#)
[Administrate-Setting](#)
[IP-Setting](#)
[E-Mail-Setting](#)

Administrate-Setting

Security State : Enable Disable

(PASSWORD Setting..)

Input Old PASSWORD

Input New PASSWORD

Verify New PASSWORD

MAX Connections Limitation :

HTTP-Server Version : ProWebSrv ver1.03e
MAC Address : 00:60:50:00:50:05

2. Enter the number of connections and click **Set**.

MAX Connections Limitation :

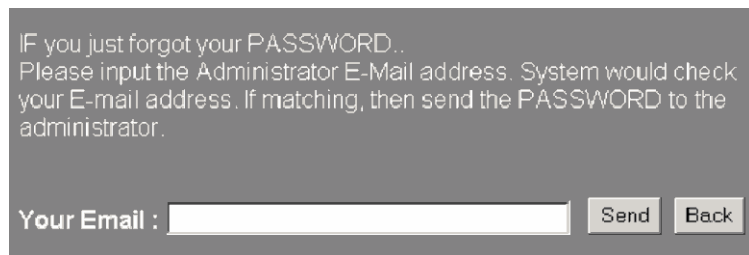
Retrieving a Forgotten Password

Refer to the following to retrieve a forgotten password.

1. In the **Input Password** screen, click **Forgot your Password?**



2. Enter your e-mail address and click **Send.**



3. The current projector password is mailed to you

