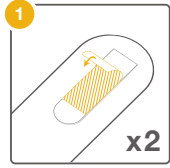
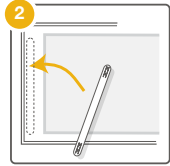


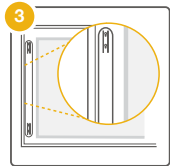
## Attaching Your Engage System



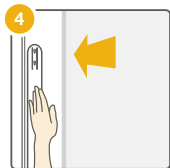
1. Locate cardboard template and peel command adhesive from top and bottom of template.



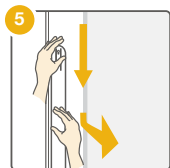
2. Holding template vertically and by the edges, determine placement. If you are installing the system on a whiteboard, make sure to leave 2 inches (5.08 cm) between the Engage System and the board frame.



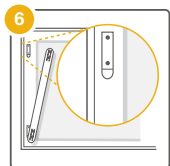
3. Place the template so that it is centered vertically on the board and parallel to the frame.



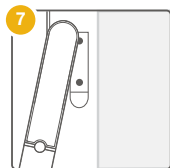
4. Press the metal brackets firmly against the board for best adhesion. Do this on the top and bottom of the system.



5. To remove the template, pull down and lift it out from beneath the Engage System.



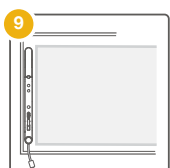
6. After the template is removed, confirm that the top and bottom brackets are firmly attached to the board, if necessary press down on them again. \*Note: 3M recommends waiting at least one hour for maximum adhesion.



7. Align the brackets with the four holes on the back of the Engage System.

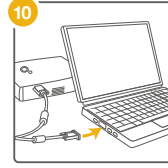


8. Gently push downward on the Engage System to lock it in place. Listen for the "click!"

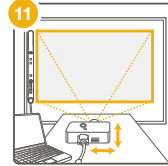


9. Engage installation is complete.

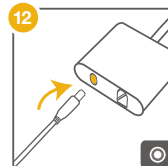
## Prepare Your Engage System For Use



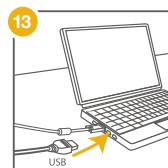
10. Connect your projector to your computer.



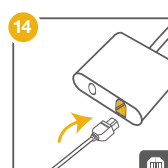
11. Turn on your projector and align/ focus the image on the board.



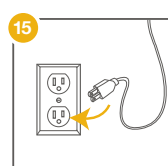
12. Connect the power cord to your Engage System.



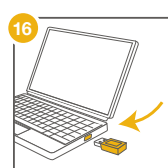
13. Connect the Engage USB cable to your computer.



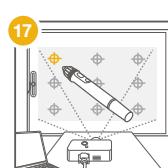
14. Connect the USB cable to your Engage System.



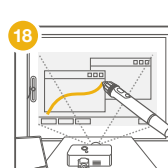
15. Connect the power cord to a power outlet and remove the backing on the 3M adhesive. Attach box to wall.



16. Insert the provided USB dongle and install software.

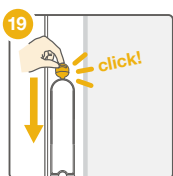


17. Launch the eBeam software. Once installed, locate calibrate button on the Engage system and calibrate your work area.

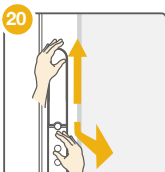


18. Software installation is complete, enjoy your system!

## Removing the Engage system

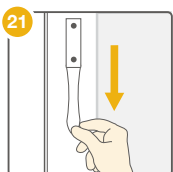


19. Place provided key in the top edge of the Engage System.



20. Lift the Engage system upward to release from brackets and pull away from surface to remove.

## Removing the Engage Brackets and 3M Command Adhesive Strips



21. Pull the 3M strips slowly in a downward motion to remove and release bracket.

# Touchboards

205 Westwood Ave, Long Branch, NJ 07740  
Phone: 866-94 BOARDS (26273) / (732)-222-1511  
Fax: (732)-222-7088 | E-mail: [sales@touchboards.com](mailto:sales@touchboards.com)