

ELMO

Envision beauty in motion



P30
Visual Presenter

P30

Visual Presenter



The P30 is ideal for a diverse range of presentation applications – from business and research to industry and education.

Elmo's state-of-the-art technologies deliver both moving and still images with exceptional beauty and clarity.

85 850,000-pixel progressive scan CCD camera

The P30's advanced camera system integrates an 850,000-pixel progressive scan CCD pickup that's capable of capturing not only the finest details of images – but moving objects as well! Combined with true XGA (1,024 x 768) resolution, the P30 reproduces three-dimensional objects and subtle shades of color with unsurpassed precision.



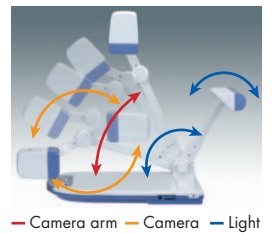
Capture crisp, live images

Now you can convey presentations more effectively and inspire your audience with vivid moving images on the big screen. With a frame rate of 20 fps, the P30 smoothly captures and reproduces moving images that can either be presented live or saved to your PC for future use.



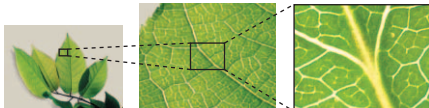
Flexible free-angle camera arm and lamp

The P30's camera head can be rotated freely to capture objects at precise angles, making it easy to present objects with the exact look you want. And with the free-angle lamp, you also have all the flexibility you need to set ideal lighting conditions.



60X zoom

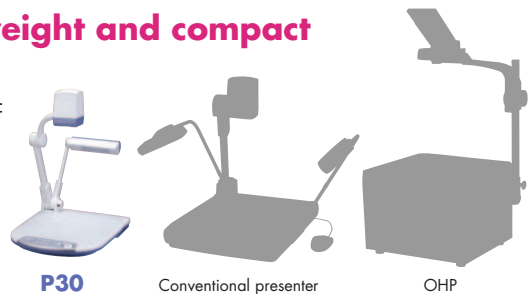
Focus in on the intricate details of your presentation with the 4X electronic magnification function that can enlarge visuals up to 60 times when combined with the 15X optical zoom lens.



Optical 15X zoom Electronic 4X zoom

See how lightweight and compact the P30 is

Weighing in at just 10.4 lbs – half the weight of conventional models – and measuring approximately 19 inches, the P30 is compact and lightweight enough to comfortably hand carry to any location.



P30

Conventional presenter

OHP

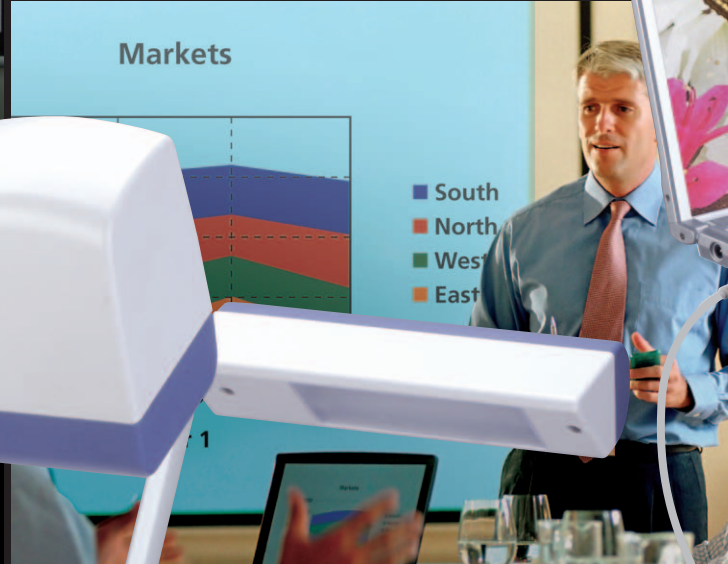
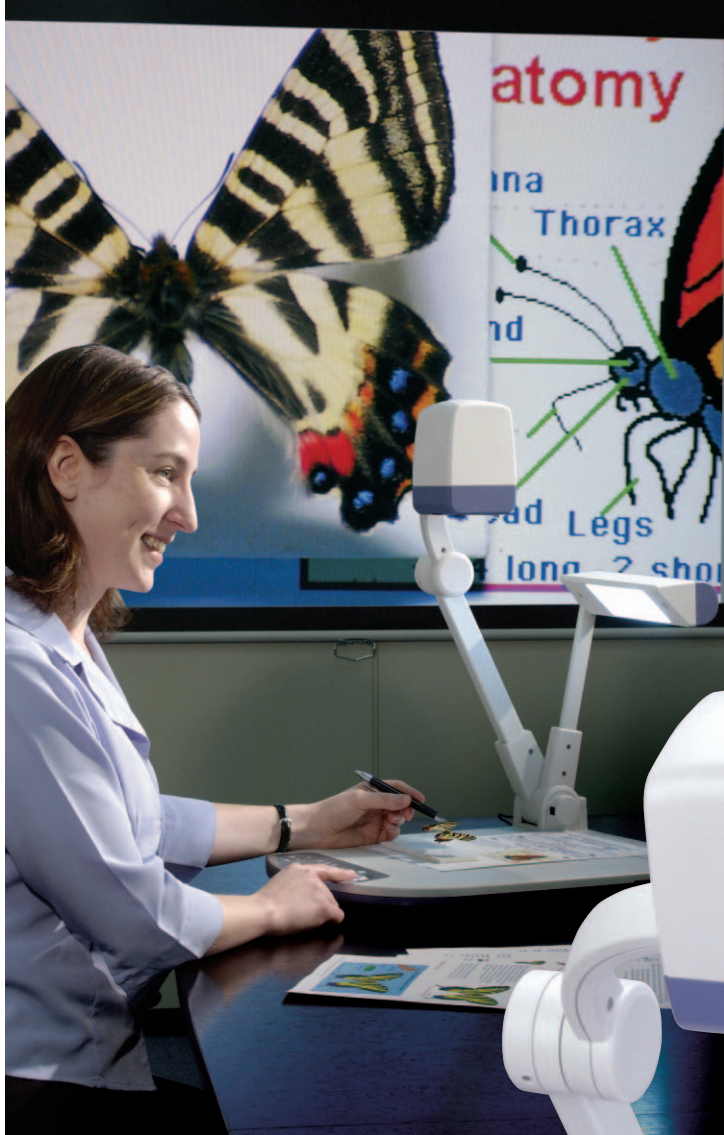
Education/Training
Business/Industry

Business trip reports
Product demos
Presentations at
medical/academic meetings
Auctions for high-quality items
Presentations of large A3-size
documents or photos

Lightweight and Compact



Crystal Clear Expression



DVI **Versatile output**

The P30's versatile output connections bring you greater presentation freedom and flexibility. The DVI output lets you transfer high-quality video data from a PC without any loss of image quality, while an analog RGB output makes it easy to connect the P30 to an LCD projector or a PC monitor for true XGA-resolution display.

User-friendly interface

For the ultimate in easy and intuitive operation, the P30 incorporates a Jog Dial zoom control for quick zoom adjustments as well as an OPT (optional) button that gives you the flexibility to assign a frequently used function to the front panel.



Jog Dial



Optional button



Quick and easy PC file transferring opens up a new world of possibilities.

With the convenience of bundled software, creating outstanding PC presentations has never been easier.



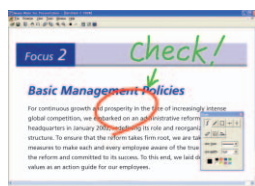
Bundled software "Image Mate for Presentation"

- Annotation tools let you draw lines (freehand or straight) in a variety of colors to highlight and enhance screen images, right from your PC.
- Split Screen gives you a platform for comparing live video to stored images — side by side for greater visual impact.

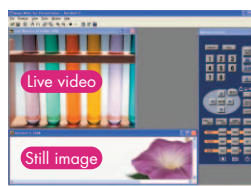
Bundled software "Image Mate for Movie Creation"

- Moving images can be easily saved to a PC for future use as analog RGB, 850,000-pixel video files. Since files are saved in common AVI or WAV format, they can be played back effectively using Windows Media® Player*.

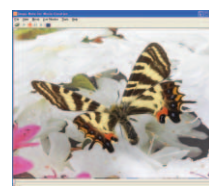
* AVI/WAV file playback is available with Windows Media Player versions 6.4 and later.



Annotation



Split Screen function



Save video files

TWAIN driver TWAIN driver

With TWAIN compatibility, the P30 brings you the versatility to import saved image files to commercially available photo retouching software.

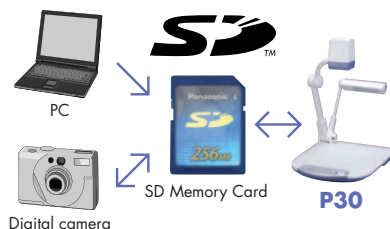
8-picture memory 8-picture memory

Offering added convenience for frequently used visual data, the P30 can store up to eight images in memory, which are securely retained even when you turn the power off.

Make effective presentations – even without a PC!

SD Card SD Memory Card-ready

Presentation data, such as PowerPoint® files and digital camera images, previously saved to an SD Memory Card (sold separately) is ready to go even without a PC. Thanks to the P30's Image Mate for Presentation software, you can output SD Memory Card data through the P30 for use in slideshow presentations. Now with the flexibility of SD Memory Card storage, which can hold up to 2,048 image files, as well as conventional PC and camera images, the P30 provides a new dimension of presentation possibilities.



Slideshow Adapter Slideshow Adapter

Even conventional slides are easily presented using the P30's included Slideshow Adapter.

Thumbnail and slideshow display Thumbnail and slideshow display

Image data can be conveniently displayed as thumbnails (9 or 16) or slideshows, enabling quick file searches and smooth operation.



USB 2.0 SD card slot

Other key features

A3 Size A3 size shooting area

With a large A3 size shooting area, the P30 captures a wider field of visual data compared to the conventional B4 size.

Cord cover Cord cover

Cables are always neat and tidy thanks to the rear panel cord cover.



Note: The cord cover pictured here is made transparent for explanatory purposes.

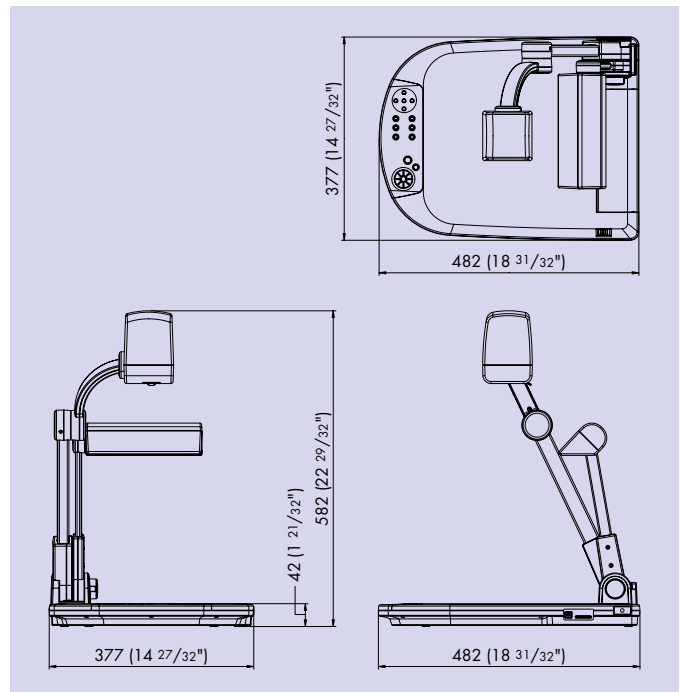
P30 Specifications

Model	P30		
Camera	Image pick-up device	1/3" progressive scan CCD	
	Total pixels	1,077 (H) x 788 (V), 850,000 pixels	
	Effective pixels	1,034 (H) x 779 (V)	
	Frame rate	20 frames/sec.	
	Resolution	RGB output 600 (H) x 600 (V) TV lines Video output 450 (H) TV lines	
Optics	Zooming	Powered (with variable speed function), 15X optical, 4X digital	
	Lens	F2.8, f=4.7 to 70.5 mm	
	Shooting area	Max. 405 x 303 mm (15 15/16" x 11 15/16"), min. 30 x 23 mm (1 3/16" x 29/32")	
	Focusing	Auto/Manual (powered)	
	Iris	Auto (with level adjustment)/Manual	
Function	White balance	Full-auto/One-push/Manual	
	Nega/posi conversion	Provided	
	Aperture enhancement	Provided	
	Text mode	Provided	
	Edge enhancement	Provided	
	Color/B&W selection	Provided	
	Pause mode	Provided	
	Digital magnification	Provided (2X, 4X, Scroll)	
	Gamma adjustment	Provided	
	OSD (on-screen display)	Provided	
	Slide show	Provided (SD memory card image)	
	Split display	Provided (SD memory card image, 9-split, 16-split)	
	Image save	Provided (onto SD memory card)	
	Image rotation	Provided (0°, 180°)	
Input/output	Sync. system	Internal	
	Internal selection	Int./RGB1	
	Analog RGB output	XGA (1,024 x 768 @60 Hz), VESA	
	Video output	Composite, S-video	
	RGB input	Provided	
PC interface	DVI output	Provided	
	RS-232C port	Provided	
Memory card	USB port	Provided	
	SD memory card slot	Provided	
Lighting	Upper lighting unit	Provided (twin fluorescent lamp)	
Others	Accessories	I/R remote control, slideshow adapter, cables, etc.	
	Dimensions	Set up	377 x 482 x 180 mm (14 27/32" x 18 31/32" x 7 3/32")
		Folded	377 x 482 x 582 mm (14 27/32" x 18 31/32" x 22 29/32")
	Weight	4.7 kg (10.4 lbs)	
	Application software	Image Mate for Presentation, Image Mate for Movie Creation, TWAIN driver [for Windows® 2000 (SP1 or later), Windows® XP]	
	Power source	AC 100 to 240V, 60 Hz	

H: horizontal, V: vertical
Design and specifications are subject to change without prior notice. Some brand names and product names may be trademarks or registered trademarks of their respected owners.

Profile

All dimensions in mm (inches)



Rear panel



Accessory



Slideshow adapter

Options



5-inch color LCD monitor
LM-5011N

Monitor shoe
MS-30



ELMO CO., LTD. (Head Office and Factory)'s QMS/EMS has been registered to ISO 9001 & ISO 14001.

ELMO is a trademark of ELMO COMPANY, LIMITED.

ELMO
FOCUS ON THE FUTURE

ELMO CO., LTD.

6-14, Meizen-cho, Mizuho-ku,
Nagoya, 467-8567, Japan
Tel. 81-52-821-3141 Fax. 81-52-811-5243
E-mail: foreign-div@elmo.co.jp

Distributed by

Additional technical information is available from any of the following subsidiary companies:

ELMO USA Corp.

1478 Old Country Road
Plainview, NY 11803-5034, U.S.A.
Tel. 516-501-1400 Fax. 516-501-0429
E-mail: elmo@elmousa.com
Web: <http://www.elmousa.com>

ELMO Canada Corp.

44 West Drive, Brampton,
Ontario, L6T 3T6, Canada
Tel. 905-453-7880 Fax. 905-453-2391
E-mail: info@elmocanada.com
Web: <http://www.elmocanada.com>

ELMO (Europe) G.m.b.H.

Neanderstr 18,
40233 Düsseldorf, Germany
Tel. 0211-3864-70 Fax. 0211-376630
E-mail: info@elmoeurope.com
Web: <http://www.elmoeurope.com>



This brochure is printed on recycled paper with soy ink.

Printed in Japan(o)03/2005