

for Professional Use



SUV-Cam PROFESSIONAL

In critical situations, when recording the event or circumstances is required, the SUV-Cam makes it easy to capture and exchange digital information with others. It's a professional's video tool.

- SUV-Cam is perfect when you need to set the camera in unusual circumstances or you want to record with your hands occupied.
- Sharing the experience of one person to train the rest of the organization is especially important when it involves work under difficult conditions. Everyone can learn from recorded events or procedures and be better prepared when they have to face a similar situation. The wearable and hands-free SUV-Cam makes it possible.
- From lessons at a driving school to actual racing, for golf lessons, or for capturing a customer's experience in permanent digital images, the SUV-Cam is the right choice.
- Make full use of the SUV-Cam as a portable and compact surveillance system, as a drive recorder, as an inspection recording system in narrow spaces, or as an imaging solution system under challenging conditions.



[Micro surveillance camera]



[Built-in camera]



[Inspection recording system]



[On-site recording camera]



[Special point of view camera]

Specifications		SUV-Cam II	SUV-Cam PROFESSIONAL
Main unit	Water proofing	IPX8	←
	Total length	80cm (31" 5/8")	←
		150cm (59" 1/4")	←
	Mass (Approx.)	300cm (9" 10" 3/8")	←
500cm (16" 5" 3/8")		←	
Camera head	Dimension	80cm = 115g (4.1oz)	←
		150cm = 190g (5.3oz)	←
	Max (Approx.)	300cm = 220g (7.4oz)	←
		500cm = 310g (10.9oz)	←
	Focal length	3.8mm	←
		3.8mm	←
	Horizontal angle of view	53.4°	←
		40.0°	←
	Focus adjustment	Manual	←
		0.5m to ∞ (Factory setting)	←
Image pick-up device	1/4" CCD image sensor	←	
	470,000 pixels	←	
Effective number of pixels	440,000 pixels	←	
	2 lx	300cm: 3lx, 500cm: 6lx	←
White balance	Auto / Fixed	←	
	Electronic shutter	1/50 to 1/100,000 sec.	←
Resolution	Horizontal: 487V lines Vertical: 427V lines	←	
	S/N ratio	48dB or more	←

Optional accessories



Supplied accessories: Recorder, Camera head (included only in SUV-Cam II), Battery pack, Belt clip, AV cable, Earphone, USB cable, Silicone case (included only in SUV-Cam Professional), AC adapter, Instruction manual

For SD (SDHC) card compatibility and accessories information, visit <http://elmo.co.jp/suv-cam/en>

The images on this brochure are simulated. "ELMO" is a trademark or registered trademark of ELMO COMPANY, LIMITED. SD logo and SDHC logo are trademarks. Other brand names and product names may be trademarks or registered trademarks of their respective owners.

ELMO's Helping to Provide a Greener Future for Our Children

The ELMO Products comply with RoHS Directive 2002/95/EC (Restriction Of the use of certain Hazardous Substances in electronic equipment). This compliance helps to ensure a healthier and greener environment for all our children.



ELMO CO., LTD. is one of the sponsors for Japan Committee Vaccines for World's Children (JCV). JCV operates under basic guidelines and objectives of the "Children's Vaccine Initiative" (CVI) founded in 1990 by UNICEF, WHO, UNICEF, the Rockefeller Foundation, and the World Bank.

We make finding the Writeboard easy. **TOUCHBOARDS** 1-866-942-6273 .COM

205 Westwood Ave, Long Branch, NJ 07740
Phone: 866-94 BOARDS (26273) / (732)-222-1511
Fax: (732)-222-7088 | E-mail: sales@touchboards.com

ELMO

SUV-Cam II



for Personal Use

As an on-board camera, as a helmet camera ... from personal use to industrial use ... the latest generation of micro video camera system from ELMO



for Professional Use

SUV-Cam PROFESSIONAL

for Personal Use



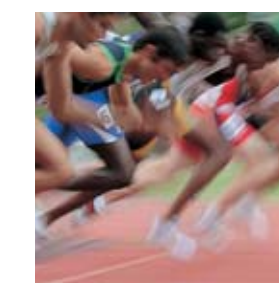
SUV-Cam II

Want to record and share an exciting experience or visually impressive scene? It's the perfect visual gear for athletes of all types.

- It doesn't matter whether you are on four wheels, two wheels, go-karting, on-road or off-road; the SUV-Cam can record your actual run, exactly as you experience it.
- Whatever the sport, this wearable camera can capture all the action from the player's point of view.
- The possible applications for our small, lightweight and flexible SUV-Cam are virtually unlimited.
- The SUV-Cam's digital images can easily be copied to DVD media for your friends and associates to enjoy. It is easy to put your most recent race or exciting sports experience on your blog or personal web page.



[On-board camera] Motor sports recording



[Training camera] Recording for image training



[Outdoor field camera] Recording where hands-free operation is required



SUV-Cam II

Want to record and share an exciting experience or visually impressive scene? It's the perfect visual gear for athletes of all types.



ELMO's SUV-Cam's advance features received high commendation from athletes worldwide when it was first introduced. Now, its usability and functionality are advanced further through extended recording capacity on SDHC cards, quick one-push recording, and a new lens support design that resists vibration.

[SDHC card support]

Supports the new high capacity SD card standard [SDHC] of 2GB or more, so you can now record more of your adventures with your SUV-Cam.



[Improved camera head design]

To protect against loss of focus caused by intense vibration, we have employed a lens stabilizer inside the camera to secure the lens adjustment.



[One-push recording]

New one-push recording makes your SUV-Cam even quicker and easier to operate. Even when the power is OFF, you can start recording just by pressing REC button to start recording whenever you want.



[Fixed white balance function]

Along with the Auto white balance function, we have added a one-push fixed white balance function that compensates the color to precisely match the recording environment. Under difficult light conditions, the SUV-Cam's fixed white balance function allows faithful reproduction of your images.



- SUV-Cam II 80cm Package (recorder + 80cm camera)
- SUV-Cam II 150cm Package (recorder + 150cm camera)

※300cm, 500cm camera heads can not be used with SUV-Cam II recorder

Record the special situation Easily record the images thought to be difficult to shoot



Quick recording and quick viewing

We have made the SUV-Cam as simple as possible in both recording and playback operations... "Quick & Easy" means all main functions can be managed with only six buttons. Start recording from stand-by (live view mode) with one-push after start-up. You can easily operate the SUV-Cam even when you are wearing gloves. The "Hold" feature prevents interruption of recording by miss-handling during intense or extreme movements. It's possible to view the recorded audio and video whenever or wherever you like.



Hands-free recording

The SUV-Cam consists of a compact waterproof micro CCD camera and palm size digital recorder that you can mount anywhere. Whether it is in a car or motorcycle as an on-board camera, or worn on your body or helmet. Just press the Record button and "Go".

External microphone

Equipped with an external mic input in addition to the built-in mic. This allows the flexibility to place the external mic close to the camera position for better audio recording.

Video output

You can enjoy sharing the recorded images with your companions by simply connecting the recorder to a TV monitor, video recorder or projector via the SUV-Cam's AV interfaces. The camera image can be output during recording or playback, so you can use SUV-Cam as a live video source, connecting it to big-screen monitor or recording equipment.

Shock resistant SD/SDHC card storage for reliable high capacity recording

More reliable than hard drive storage systems, SD/SDHC cards have been adopted for SUV-Cam. Simply insert the card into a PC for quick transfer or playback of files with Windows Media Player.

※SD (SDHC) card is optional
※Windows Media Player is a trademark of Microsoft corporation

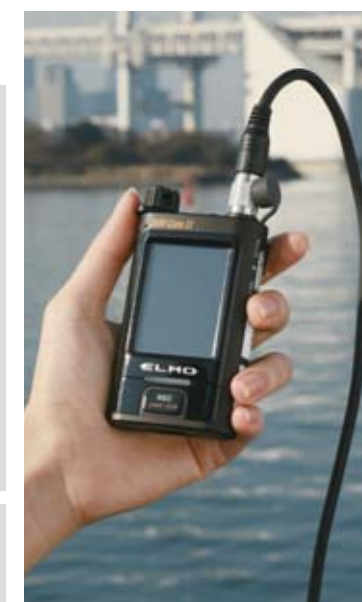
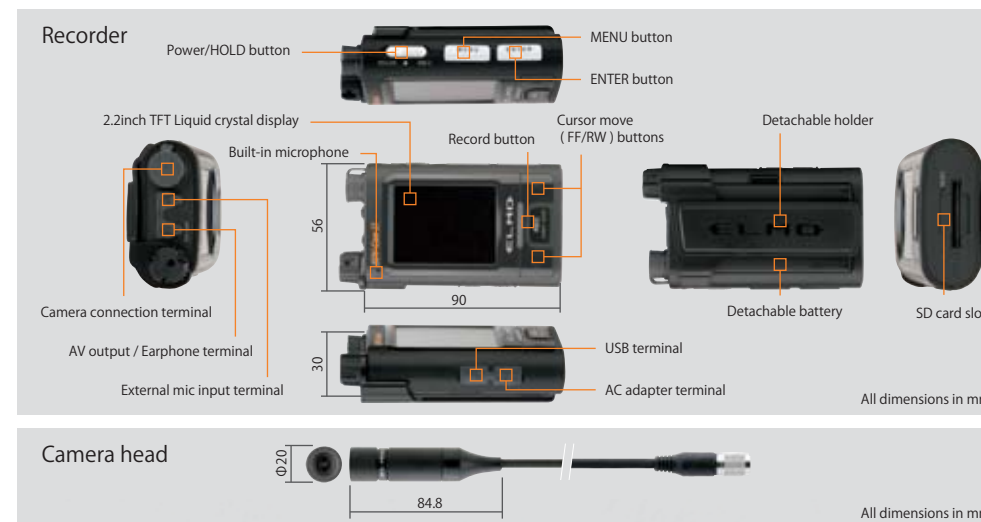


SD card capacity [4GB]		Recording mode : Video + Audio				
Resolution	Quality	Recording speed				
		25 frames/s	15 frames/s	5 frames/s	3 frames/s	1 frame/s
704×480	High	2h14m	3h43m	10h52m	17h39m	47h06m
	Standard	2h33m	4h14m	12h21m	20h	52h35m
	Low	2h58m	4h56m	14h18m	23h04m	59h30m
640×480	High	2h58m	4h56m	14h18m	23h04m	59h30m
	Standard	3h34m	5h54m	17h	27h14m	68h31m
	Low	4h27m	7h20m	20h56m	33h15m	80h45m
320×240	High	4h27m	7h20m	20h56m	33h15m	80h45m
	Standard	5h54m	9h42m	27h14m	42h39m	98h18m
	Low	8h45m	14h18m	38h59m	59h30m	123h27m
160×128	High	17h	27h14m	68h31m	98h18m	172h55m
	Standard	22h13m	35h11m	84h31m	117h27m	192h26m
	Low	32h04m	49h41m	118h17m	145h52m	215h20m

※Actual recording time and size of data varies depending on the kind of SD card and its supplier
※Recording time is proportional to the capacity of an SD card
※Recording time may be different according to the object of shooting

Portable Video recorder

By using the MPEG4 recording format in a portable video recorder the size of a mobile phone, DVD picture quality and long recording times are possible.



Waterproof micro camera with heavy-duty specifications



The camera is housed in a cylindrical stainless-steel body that is compact and waterproof to the depth of 40m (132ft.). Designed for rigorous personal or professional use, it can withstand pressure up to 930kgf (2046lbs). The standard lens achieves the same wide angle view as a 35mm film camera.

※Measured at ELMO internal test
The test data do not guarantee similar performance under similar actual environmental conditions.

Selectable camera cable

Select the cable and camera head for the SUV-Cam that meets your requirements, then mount it where it's difficult or impractical to use a conventional video camera. Two types of camera cables are available for SUV-Cam II, four types of camera cables for SUV-Cam Professional.

SUV-Cam II / SUV-Cam PROFESSIONAL

— Cable and Camera Heads for Use with Both SUV-Cams —
Total length : 80cm for wearable or mounted use
Total length : 150cm for wearable or on-board use

SUV-Cam PROFESSIONAL

— For Use Only with the SUV-Cam Professional —
Total length : 300cm for various industrial and commercial uses
Total length : 500cm for the use when extended wiring is needed

※The picture is SUV-Cam II
※The images on LCD are simulated

SUV-Cam PROFESSIONAL

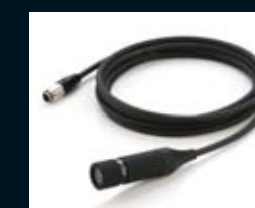
When the situation is critical and seconds count, it is ready at the push of a button... a professional's video tool.



Along with the basic functions of SUV-Cam II, SUV-Cam Professional includes support for longer camera cables, schedule recording and continuous overwrite recording for use as a portable surveillance system or as a monitoring camera for industrial applications.

[Max. 5m cable length]

When temporary operating conditions or fixed installations require longer camera cables, 300cm and 500cm camera heads are available for the SUV-Cam Professional. It can also use the SUV-Cam's original 80cm and 150cm cameras. Choose the type of camera heads that meets your usage demands.



[Continuous overwrite recording]

SUV-Cam professional supports continuous overwrite recording that is a must feature for surveillance recording. This function is effective when you need to keep recording until a specific even or problem has occurred; such as, for a production management task or security operation.



[Schedule recording]

Schedule recording is ready for SUV-Cam Professional. Up to 10 patterns can be set for schedule recording on a specific day of the week, for repetitive recording in certain period, on a designated day of the week or a certain period within one week. Combined with continuous overwrite recording or intermittent recording, SUV-Cam Professional can be managed as a portable surveillance camera system.



- SUV-Cam Professional Recorder
- Camera head 80cm
- 150cm
- 300cm
- 500cm

※Recorder and camera head are sold separately