

# MOUNTING SOLUTIONS for Epson projectors



**Epson offers a full range of projector ceiling mounts designed to meet your installation needs.**

Whatever the setting, whichever Epson projector you'd like to install, you'll find a mount that's made to fit.

Choose from a variety of mounts and accessories that make it easy to customize any setting.



Precision gear

## Universal Projector Ceiling Mount

For value and versatility

With its low profile and versatile design, this mount offers a clean, sleek appearance, making it perfect for use in classrooms, boardrooms, hotels and restaurants, or virtually anywhere a projector needs to be mounted.

- Universal adapter plate fits nearly all projectors up to 50 lb
- Single adjustment point facilitates quick image alignment
- Convenient design makes flush mounting easy for low-profile installations
- Quick-release mechanism offers easy projector access
- Extension column connector makes it easy to route cables through a 1.5" extension column or pipe
- Pre-assembled design saves installation time
- Security hardware supports theft prevention

**Part Number:** ELPMBPJF

**Dimensions:** 7.1" x 7.1" x 4.2" (W x D x H)

**Weight:** 2.9 lb

**Color:** Silver

Tilt:  $\pm 15^\circ$ , Roll:  $\pm 15^\circ$ , Swivel:  $360^\circ$

### Packaging Specifications

**Dimensions:** 12.1" x 6.1" x 3.1" (W x D x H)

**Weight:** 3.5 lb

## Advanced Projector Ceiling Mount with Precision Gear

For superior function and accuracy

With a patent-pending, precision gear design, this mount facilitates exact tilt- and roll-image positioning with the simple turn of a knob. Once the installer sets the gear to the desired position, it stays securely in place.

- Dedicated projector mounting plates fit all Epson business projectors\* up to 50 lb
- Two adjustment knobs control projector image alignment — adjust tilt and roll with a screwdriver or extend the knobs to adjust by hand
- Horizontal wrench access slots make flush mounting installations fast and easy
- Pre-assembled design saves installation time
- Quick-release mechanism offers easy projector access
- Security hardware supports theft prevention

**Part Number:** ELPMBPRG

**Dimensions:** Middle plate configuration: 10.5" x 6.5" x 2.5" (W x D x H)

2-plate configuration: 13.6" x 11.1" x 2.6" (W x D x H)

**Weight:** 4.9 lb

**Color:** White

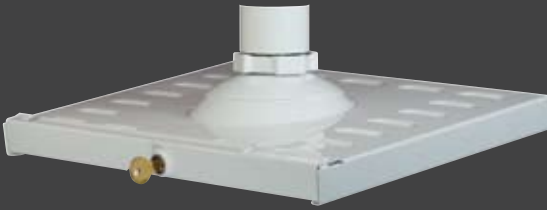
Tilt:  $\pm 20^\circ$ , Roll:  $\pm 10^\circ$ , Swivel:  $360^\circ$

### Packaging Specifications

**Dimensions:** 19.9" x 11.5" x 3.9" (W x D x H)

**Weight:** 6 lb

\*Excluding PowerLite 1720, 1725, 1730W and 1735W



Easy cable  
management



# High-security Projector Ceiling Mount

For maximum security and flexibility

With a two-piece tray and unique key lock, this mount provides the highest level of safety and security. Designed with a sleek, low profile, it fits perfectly in practically any environment.

- Fits all Epson business projectors\* up to 25 lb
- Unique, pick-resistant, five-wafer, screw-type key lock
- Two interlocking steel trays provide access and stability to the projector during installation
- Simple ball-and-socket design makes it easy to achieve precise registration without using any tools
- Quick and easy cable management
- Comes fully assembled and ready to be installed to any 1.5" pipe

**Part Number:** ELPMBATA

**Dimensions:** 14.4" x 10.9" x 4.9" (W x D x H)

**Weight:** 7.9 lb

**Color:** White

Tilt:  $\pm 20^\circ$ , Roll:  $\pm 10^\circ$ , Swivel:  $360^\circ$

## Packaging Specifications

**Dimensions:** 14.8" x 11.3" x 5.6" (W x D x H)

**Weight:** 9.5 lb

\*Excluding PowerLite 1810p, 1825, G5000, G5150NL, G5200WNL and G5350NL

# Mount accessories for use with all Epson projectors



## Adjustable Suspended Ceiling Channel Kit

- Mounts above a 2' x 2' or 2' x 4' ceiling tile to a structural ceiling with tie wires
- Includes tie wire supports and a flush mounting tube
- 1.5" pipe fitting for attachment to an adjustable extension column
- Two knockout panels for electrical outlet boxes
- 13.9" continuous, uninterrupted projector adjustment
- Escutcheon ring included for a clean finish

**Part Number:** ELPMBP01

**Maximum Weight Load:** 50 lb

**Color:** White



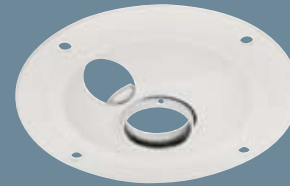
## False Ceiling Plate Kit

- Replaces a 2' x 2' ceiling tile and mounts to a structural ceiling with tie wires
- Offers five different points for mount attachment with a convenient, two-piece design
- Includes tie wire supports and a flush mounting tube
- 1.5" pipe fitting for attachment to an adjustable extension column
- Two knockout panels for electrical outlet boxes

**Part Number:** ELPMBP02

**Maximum Weight Load:** 50 lb

**Color:** White



## Structural Round Ceiling Plate

- Mounts to a wood joist or structural concrete ceiling
- Features a cable management access hole
- 1.5" pipe fitting for attachment to an adjustable extension column

**Part Number:** ELPMBP03

**Maximum Weight Load:** 150 lb

**Color:** White



## Adjustable Extension Column (Pipe) 8" – 11"

- Includes an 8" – 11" adjustable extension (adjusts in 1-inch increments)
- Features a pipe fitting, threaded on both ends
- Offers notched ends for use with set screws to provide added safety and security
- Designed to allow cable management

**Part Number:** ELPMBP01

**Color:** White

**EPSON**<sup>®</sup>  
EXCEED YOUR VISION



**Touchboards**

205 Westwood Ave, Long Branch, NJ 07740  
Phone: 866-94 BOARDS (26273) / (732)-222-1511 | Fax: (732)-222-7088  
E-mail: [sales@touchboards.com](mailto:sales@touchboards.com) | Site: [www.touchboards.com](http://www.touchboards.com)