

Setup Guide for

mimio®



Capture Kit



Touchboards

205 Westwood Ave, Long Branch, NJ 07740
Phone: 866-94 BOARDS (26273) / (732)-222-1511
Fax: (732)-222-7088 | E-mail: sales@touchboards.com

**For Windows 98SE/Me/2000/XP and Vista
& Mac OS X 10.3.9 or later**

Use this to quickly setup and use your mimio for digital ink capture.

Box Contents



mimio Stylus (x4) - Stylus pens hold standard Expo® dry erase markers and are used to digitally record notes and drawings.



mimio Eraser - Eraser used to digitally remove recorded ink while you erase your whiteboard with narrow and wide sizes.



Expo Markers (x4) - Black, red, green, and blue Expo dry erase markers for use with your mimio Stylus pens.



Color Caps (x8) - Black, red, green, blue, orange, yellow, brown, and purple color caps for mimio Stylus pens.



Stylus Caps (x4) - Caps for keeping your Expo dry erase markers from drying out while in a mimio Stylus.



Stylus Holder - Easily attaches to any whiteboard and stores up to four mimio Stylus pens, when they are not in use.



Eraser Holder - Easily attaches to any whiteboard and stores the mimio Eraser, when it is not in use.

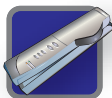


N-Cell Battery (x4) - Batteries included for your mimio Stylus pens.



AAA Battery - Battery included for your mimio Eraser.

System Requirements



mimio Hardware
(Compatible with all listed hardware)

- **mimio Interactive**
- **mimio Capture**
- **mimio Xi**
- **mimio Board**



mimio Software
(Compatible with all listed software)

- **(Windows) mimio Studio 5.1 or later**
- **(Mac) mimio Studio 5.2 or later**

Setup Process

1



Insert N-cell battery into Stylus Pen.

2



Put appropriate Color Cap onto the Stylus Pen by snapping it into place. Align Color Cap accordingly for the spring to make contact with the battery.

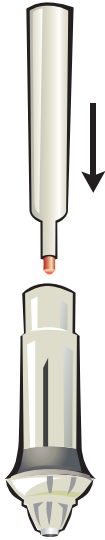
3



Remove the end of the Stylus Pen by twisting and pulling.

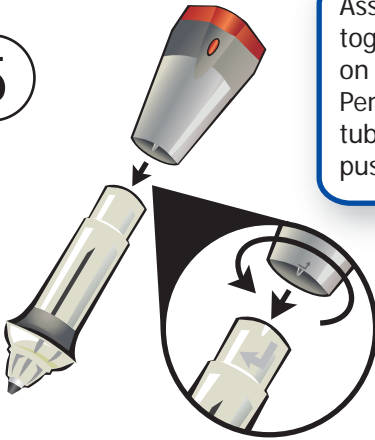
Setup Process continued

4



Insert the Expo dry erase marker into the Stylus Pen body that matches the Color Cap.

5

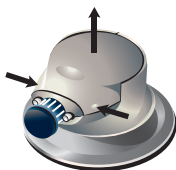


Assemble the Stylus Pen back together by aligning the arrow on the back end of the Stylus Pen with the arrow on the clear tube of the Stylus Pen and then push together and twist to lock.

Repeat steps 1 through 5 for the remaining three Styli.

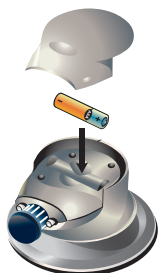
Setup Process continued

6



Remove the Eraser cover, by pressing on the sides of the Eraser and pulling.

7

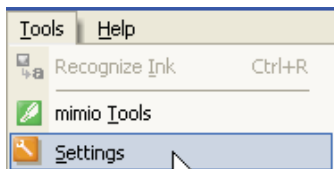


Insert AAA battery and assemble cover back onto Eraser.

Open the mimio Notebook application to correlate the mimio Notebook surface size to your physical whiteboard dimensions.

8

Adjust your surface size by selecting Tools > Settings from within the mimio Notebook application.



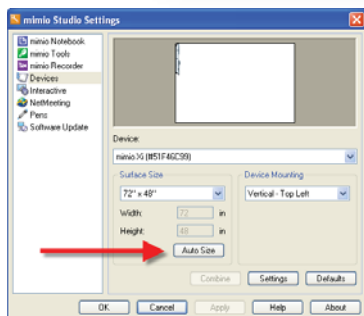
OR



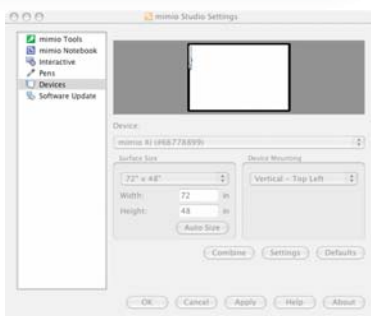
Setup Process continued

9

Click on the Devices icon on the lefthand side of the mimio Studio Settings dialog. Click Auto Size and touch any mimio Stylus pen to the targeted location at the lower right corner of your whiteboard.



OR

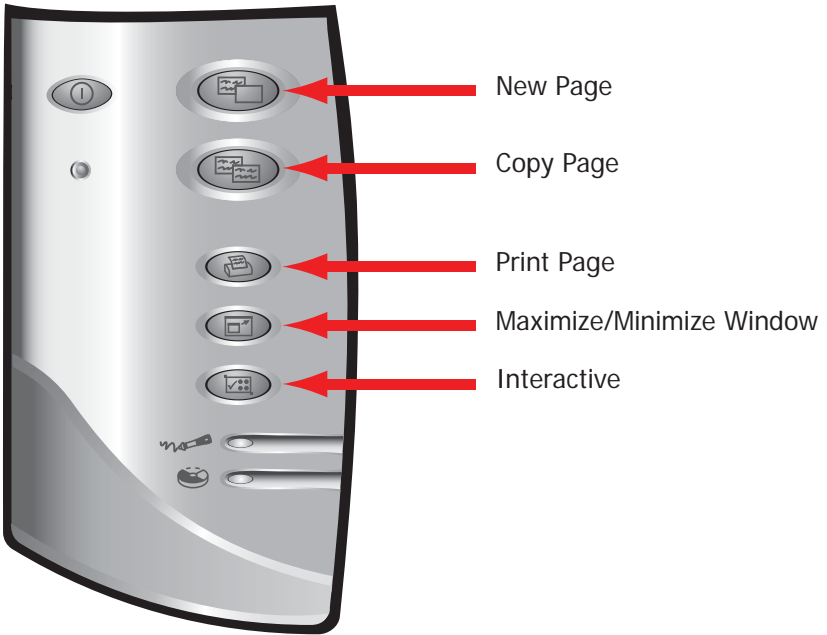


10

Click OK to save the changes.

Recording Digital Ink

The mimio Notebook will automatically begin recording digital ink when a Stylus Pen is used on the whiteboard.



- Press the New Page button to insert a new page.
- Press the Copy Page button to insert a duplicate of the current page.
- Press the Print Page button to print the current page.
- Press the Minimize/Maximize Window button to change the state of the mimio Notebook.

Technical Support

All mimio products include free phone and e-mail support.

Email: techsupport@mimio.com (United States and Canada) or
techsupport.europe@mimio.com (Europe)

Telephone: 1-877-846-3721 (United States and Canada) or
+44 870 458 3366 (Europe)

Web Site: <http://www.mimio.com/support>

With all support inquiries, please provide us with the following information:

- mimio model number (located on the mimio serial number label)
- mimio software version number
- Operating system on computer
- Make and model of computer
- Description of problem

This device complies with Part 15 of the FCC Rules. Operation is subject to the following two conditions:

(1) this device may not cause harmful interference.

(2) this device must accept any interference received, including interference that may cause undesired operation.

Caution: Changes or modifications not expressly approved by the party responsible for compliance could void the user's authority to operate the equipment. Contact Sanford Corporation, 150 CambridgePark Drive, Cambridge, MA 02140. Technical Support: 877-846-3721.



Declaration of Conformity

Manufacturer's Name: Sanford Corporation
Manufacturer's Address: 150 CambridgePark Drive
Cambridge, MA 02140
USA

Declares that the product: Product Name: mimio Xi
Model Number: DMA-02

Conforms to the following standards:

Safety: EN 60950:1992 +A1:1993 +A2:1993 +A3:1995 +A4:1997 +A11:1997, EN 60825-1:1994

EMC: EN 61000-6-3:2001, EN 55022:1998, Class B (CISPR-22),

Immunity: EN 61000-6-1:2001, EN 55024:1998 + A1:2001 + A2:2002,

EN 301 489-01 V1.4.1, EN 301 489-03 V1.4.1 using:

EN 61000-4-2:1995 + A1:1998, EN 61000-4-3:1995 + A1:1998, EN 61000-4-4:1995,

EN 61000-4-5:1995, EN 61000-4-6:1996, EN 61000-4-11:1994

The product is in conformity with the requirements of the General Product Safety Directive (92/59/EEC), the Low-Voltage Directive (73/23/EEC), the EMC Directive (89/336/EEC), the Machinery Directive (89/392/EEC), and the Product Liability Directive (85/374/EEC) and amendment (1999/44/EC).

Sanford Brands - mimio

150 CambridgePark Drive
Cambridge, MA 02140

Toll-free in US: (877) my-mimio (696-4646)
Main telephone: (617) 902-2040
Fax: (617) 902-2041
E-mail: productinfo@mimio.com

Parker Pen Company - mimio

7 Berkshire Business Centre
Berkshire Drive
Thatcham, Berkshire
RG19 4EW
UK

Telephone: +44 870 458 3344
Fax: +44 870 458 3355
Support: +44 870 458 3366
E-mail: eurosales@mimio.com

© 2007 Sanford LP. All rights reserved. mimio is a registered trademark and mimio Xi is a trademark of Sanford LP.

Windows is a registered trademark of Microsoft, Inc. All rights reserved.