

Setup Guide for



Touchboards

205 Westwood Ave, Long Branch, NJ 07740

Phone: 866-94 BOARDS (26273) / (732)-222-1511

Fax: (732)-222-7088 | E-mail: sales@touchboards.com

For Mac OS X 10.3.9 or later

Use this guide to quickly setup and use your mimio Xi interactively with a projector.

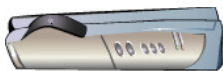
1

Check your contents

Your mimio Interactive contains the following components:



mimio Studio CD



mimio Xi



mimio Mouse



Mounting Brackets



x1 AA Batteries



USB Cable

2 Install mimio Studio

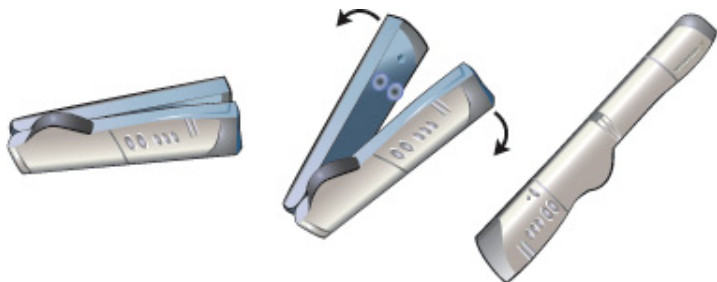
1. Insert the mimio Studio CD into your CD ROM drive.



2. When the CD's icon appears on the desktop, double-click the icon to display the CD's contents.
3. Double-click the **mimio Studio** icon. An installation application will launch.
4. Follow the onscreen instructions.

3 Setup your mimio Xi

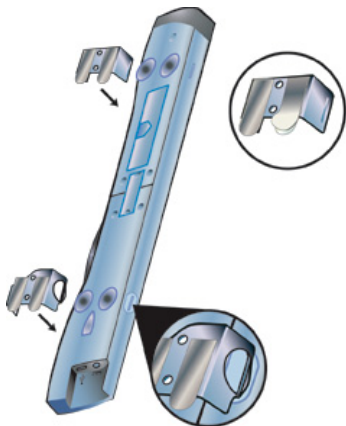
1. Unfold the mimio Xi.



2. Plug the included mini-USB cable into the socket on the bottom recessed end of the mimio Xi.

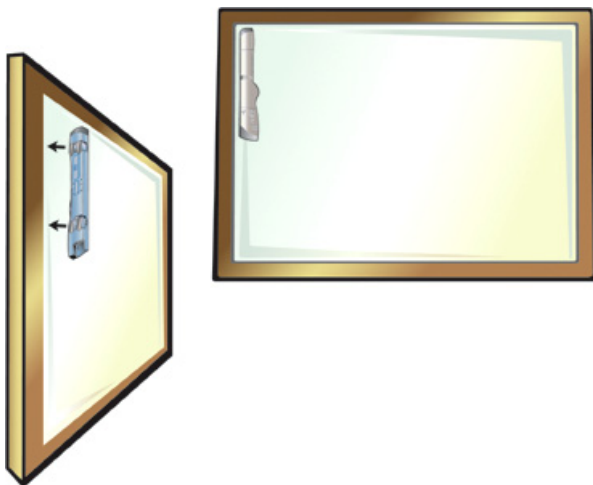


3. Attach the mimio Xi to your whiteboard, using one of the following:
- For periods of extended use or repeated use in any location, attach the mimio Xi using the mounting brackets:
 - a. Snap the mounting brackets over the suction cups, making sure they clip into the recesses on the edges of the mimio Xi.



- b. Carefully peel the backing from the adhesive strips.

- c. Mount the mimio Xi by pressing the bar, with mounting bracket in place, in the upper left-hand corner of your whiteboard.



- For short periods of use, attach the mimio Xi using the suction cups.
 - a. Clean the surface of the whiteboard with a damp cloth.

- b. Press the mimio Xi in the upper left-hand corner of your whiteboard.



4. Plug the other end of the USB cable into your computer USB port. The capture bar should be automatically detected by the computer and the mimio Studio software. Refer to your system documentation if you are unable to find the USB port, or if your capture bar is not automatically detected.



4 Setup your mimio Mouse

1. Remove the battery cover by lightly pressing down and pushing the cover back away from the mimio Mouse tip.



2. Insert AA battery.

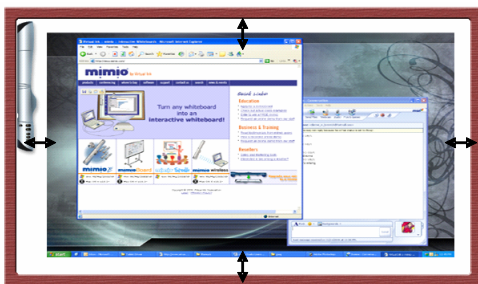


3. Put the battery cover back on by gliding the cover back into place.

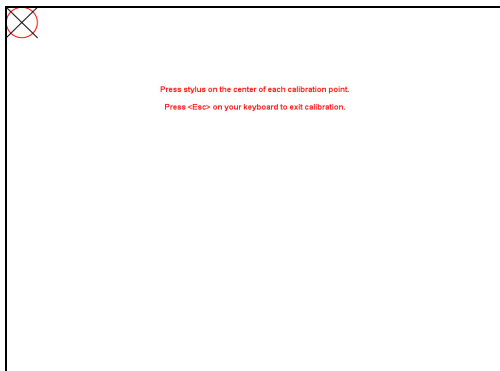


5 Calibrate with a projector

1. Project your Desktop image onto your whiteboard. Make sure there is a 2-3" buffer between the projected image and:
 - The edges of the whiteboard
 - The mimio device







2. Press the **Interactive**  button on your mimio device.



3. Follow the onscreen instructions.

6

Using the Interactive Mode

- Use the mimio Mouse as a mouse to control your Desktop or interact with applications.
- Press the **Hover**  (front) button, to hover the mimio Mouse over your Desktop or application.
- Press the **Right-click**  (back) button, to execute a right-click at the current mimio Mouse location.
- Use the mimio Tools to annotate over any application.
 1. Right-Click the **mimio Studio** on the Dock and select **mimio Tools**.
 2. Click **Screen Markup**  to “freeze” whatever screen or application you are in.
 3. Annotate the frozen screen with the mimio Tools.
 4. Click **Mouse**  to “unfreeze” the screen. All annotations are automatically archived for later use in the mimio Markups.
- Use the **mimio Notebook** to create content and present content.
 1. Right-Click the **mimio Studio** on the Dock and select **mimio Notebook**.
 2. Use the mimio Tools to create or edit content.

For more information about using the Interactive Mode check out the comprehensive mimio Studio User’s Guide on the mimio Studio CD.

7

Accessories and Add-ins

Visit the mimio Store at <http://www.mimio.com/buy/store> (for USA customers) or contact your local reseller to purchase add-ons and accessories.



mimio wireless

mimio Wireless is an upgrade available for mimio Xi. With mimio wireless you no longer need to worry about tripping over cables or whether the USB cable is long enough to reach your computer.



mimio Xi Carry Case

Get to that next meeting in style! Use this attractive carry case to move your mimio Xi - it holds the capture bar (folded), eraser, styli, cable, and software in a sturdy shell embroidered with the mimio logo.

Virtual Ink Corporation

150 CambridgePark Drive
Cambridge, MA 02140
USA

Toll-free in US: (877) my-mimio (696-4646)
E-mail: productinfo@mimio.com

Support telephone: (877) 846-3721
Support E-mail: techsupport@mimio.com

Virtual Ink Europe Ltd

7 Berkshire Business Centre
Berkshire Drive
Thatcham, Berkshire
RG19 4EW
UK

Telephone: +44 870 458 3344
Fax: +44 870 458 3355
E-mail: eurosales@mimio.com

Support Telephone: +44 (0)870 458 3366
Support E-mail: techsupport.europe@mimio.com

© 2006 Virtual Ink Corporation. All rights reserved. mimio is a registered trademark and mimio Xi is a trademark of Virtual Ink Corporation.

Mac is a registered trademark of Apple Computer, Inc. All rights reserved.