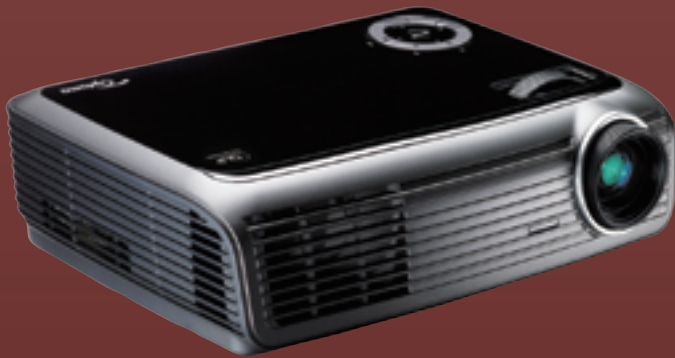


# The Presentation-Friendly Performer



## Delivering Multi-Faceted Performance

The Optoma EP721 is a multi-faceted digital projector that is unparalleled in features and functionality. Featuring 2200 lumens of brightness and a variety of connectivity options, the EP721 is a lightweight SVGA powerhouse. The EP721 is the essential presentation tool that is user-friendly and delivers superior performance.

## EP721 FEATURES

- ❑ 2200 lumens with a 2000:1 contrast ratio
- ❑ Lightweight SVGA projector at 4.4 pounds
- ❑ Features DLP® technology from Texas Instruments
- ❑ Wide-range of connectivity options including: VGA-In/Out, DVI w/HDCP
- ❑ Ideal presentation remote with laser pointer and page advance features

# EP721 | Multimedia Projector

## Projection Distance/Image Size

Projection Distance (Feet)	Maximum Diagonal (Inches)	Minimum Diagonal (Inches)
6	42.6	41.9
8	61.5	55.8
10	76.9	69.8
12	92.3	83.7
14	108	97.7
16	123	112
18	138	126

## Control Panel



## Optional Accessories

Lamp:	BL-FP200F
Mount:	BM-1015N
Remote:	BR-5016L
VGA to Component Cable (2m):	BC-VGCRXX02
S-Video Cable (2m):	BC-SVSVXX02
DVI to DVI Cable (2m):	BC-DIDIXX02
RS-232 Cable (2m):	BC-RDRMYX02
S-Video to Composite Adapter:	BC-SVSVCVXY0S
Composite Video Cable (2m):	BC-COCOXX02
Audio-Out Adapter:	BC-MJADXY00
DVI to HDMI Adapter:	BC-DIHMXY00
100" 4:3 Manual Pull-Down Screen:	DS-3100PM
Carrying Case:	BK-4019

## Specifications

Display Technology:	Single 0.55" DDR DLP <sup>®</sup> Technology by Texas Instruments
Resolution:	Native SVGA (800 x 600)
Maximum Resolution:	UXGA (1600 x 1200) Resized
Brightness (Typical):	2200 Lumens
Contrast Ratio:	2000:1 (Full On/Full Off)
Lamp Type:	180W UHP
Lamp Life (STD/ECO):	3000/4000 Hours
Throw Ratio:	1.94 to 2.16:1 (Distance/Width)
Image Size (Diagonal):	27.5" to 302.9" (0.7 to 7.69 m)
Projection Distance:	3.9' to 39.4' (1.2 to 12 m)
Noise Level (STD/ECO):	32dB/30dB
Remote Control:	Fully Featured Remote with Laser Pointer
Monitor Loop Through:	D-Sub 15 VGA Output (Functional in Both Normal and Standby Modes)
Computer Compatibility:	VGA, SVGA, XGA, SXGA, SXGA+, UXGA Resized, VESA, PC and Macintosh Compatible
Video Compatibility:	NTSC, PAL, SECAM, EDTV (480p), HDTV (576i/p, 720p, 1080i)
Aspect Ratio:	4:3 Native, 1.78:1, 5:4 and 16:9 Compatible
Projection Lens:	F=2.35~2.47, f=21.83~23.81 mm, 1.1x Manual Zoom and Focus
User Controls:	Complete On Screen Menu Adjustments in 22 Languages
Audio:	One 1-Watt Speaker
Keystone Correction:	± 40° Vertical
Vertical Refresh Rate:	50 to 85 Hz
Horizontal Scan Rate:	15 to 100 kHz
Power Supply:	AC Input 100 - 240V, Auto-Switching
Power Consumption:	260 Watts (Maximum), <10 Watts (Standby Power)
Weight:	4.4 lbs (2 kg)
Dimensions (W x H x D):	10.2" x 2.9" x 7.4" (259 x 73 x 188 mm)
Operating Temperature:	40-95°F (5-35°C) (80% Humidity), Adjustable Fan Speed for High Altitude Application
Displayable Colors:	16.7 Million
Projection Method:	Front, Rear, Ceiling Mount, Table Top
Uniformity:	85%
Security:	One Kensington® Lock Port
I/O Connectors:	DVI w/HDCP, VGA-In, VGA-Out, S-Video, Audio-In, RS-232, USB
Standard Accessories:	AC Power Cord, VGA to VGA Cable, USB Cable, Remote Control, Batteries for Remote, Lens Cap, Carrying Case, Quick Start Guide, Warranty Card and User's Manual
Optional Accessories:	Ceiling Mount, VGA to Component Cable, DVI to DVI Cable, RS-232 Cable, S-Video Cable, S-Video to Composite Adapter, Composite Cable, Audio-Out Adapter, Gold Service Warranty and GrayWolf™ Series Screens
Warranty:	1 Year Limited Parts and Labor, 90 Days on Lamp
UPC:	796435 11 137 3

[www.OptomaUSA.com](http://www.OptomaUSA.com)

Data:EP721-001-1032803

We make finding the Writeboard easy

**TOUCHBOARDS**  
1-866-942-6273 .COM

205 Westwood Ave, Long Branch, NJ 07740  
Phone: 866-94 BOARDS (26273) / (732)-222-1511  
Fax: (732)-222-7088 | E-mail: [sales@touchboards.com](mailto:sales@touchboards.com)

**Optoma**

HIGH-DEFINITION TELEVISION  
**HDTV**  
MONITOR

**DVI**  
HDCP COMPLIANT

PICTURE BY  
**DLP**  
TEXAS INSTRUMENTS

All Specifications are subject to change without notice. ©2008 Optoma Technology, Inc. DLP<sup>®</sup> and the DLP logo are registered trademarks of Texas Instruments. All other names mentioned herein are property of their respective owners.