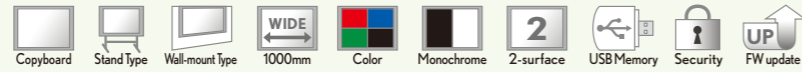


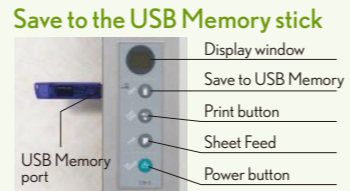
COPYBOARD  
**CR-5** SERIES

This compact, light-weight and stylish Copyboard fits in any room.  
Save your ideas and data anywhere.



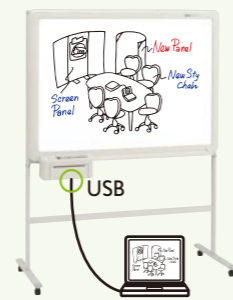
**CR-5**      **CR-5 Stand**  
Board size: W1000 x H610mm  
**CR-5 Partition Hanger Kit**

OPTIONS Stand Kit CR-5-T, Partition Hanger Kit



COPYBOARD  
**BF-041** SERIES

A new standard copyboard equipped with a handy built in printer and a USB interface for direct PC connectivity.



**BF-041S**  
Board size: W1300 x H920mm



**BF-041W**  
Board size: W1800 x H920mm

**Spec**

	BF-041S	BF-041W	CR-5
<b>BOARD</b>	Board Surface Panel	W1300 x H920mm(51.2 x 36.2 inches)	W1800 x H920mm(70.7 x 36.2 inches)
	Effective Reading Area	W1240 x H880mm(48.8 x 34.6 inches)	W1740 x H880mm(68.5 x 34.6 inches)
	Number of Pages	2	
	Sheet Driving Method	Motorized / Manual	
	Ruled Lines	50 mm (2 inches) Squares	
	Writing Instruments	Dry Erase Whiteboard Markers (Black/Red/Blue)	
	Reading Method	CCD Optical Sensor (RGB LED)	
<b>PRINTER</b>	Compatible Printers(Subject to printer models)*1	-	Inkjet (HP PCL3e/LexmarkZ1320)
	Paper	Thermal Printer	A4-size(210x297 mm) / Letter-size (8.5 x 11 inches) Plain Paper
	Colors	Monochrome	Color or Monochrome
	Print Density	-	300dpi
	Interface	-	USB1.1or USB2.0 Full-speed Mode*2
<b>EXTERNAL MEMORY</b>	Type	-	USB Flash Memory*3
	File Format	-	JPEG and PNG Format
<b>PC CONNECTIVITY</b>	Interface	-	USB1.1or USB2.0 Full-speed Mode*2
	File Format	-	JPEG and PNG Format
<b>OPERATING CONDITIONS</b>	Supported OS	Microsoft Windows 2000 Professional (Service Pack 4 or Later) / Windows XP (Home Edition/Professional Edition Service Pack 2 or Later) / Windows Vista (32bit)	
	Temperature	10 - 35 °C (Operation)	
<b>POWER SUPPLY</b>	Humidity	30 - 85 % (No condensation)	
	Power Source	100-120 V 220-240 V*4, 50-60 Hz	AC Power 100-240 V, 50-60 Hz
<b>DIMENSIONS</b>	Power Consumption	60 W (Standby), 120 W (Operation)	5 W or less (Standby), 5 W (Power-on), 12 W (Operation)
	Dimensions	W1470 x D600 x H1885mm W57.9 x D23.6 x H74.2 inches	W1970 x D600 x H1885mm W77.6 x D23.6 x H74.2 inches
<b>WEIGHT</b>	37 kg / 81.6 lb	43 kg / 94.8 lb	8.5 kg (Not Including Marker tray and AC adapter) / 18.75 lb
<b>INSTALLATION</b>	Stand		Wall-Mount / Stand*5
<b>ACCESSORIES</b>	Markers (Black, Red, Blue), Eraser, USB Cable (3 m Length), Thermal print Paper (30m / 98ft), User's Manual, Assembly Set-up Manual, Quick Guide, CD-ROM (TWAIN Driver, USB Driver, Setup Utility, PLUS Image Viewer, User's Manual (PDF))		Markers (Black, Red, Blue, Green), Eraser, AC Power Adaptor, USB Cable (3 m Length), User's Manual, Assembly Set-up Manual, Quick Guide, CD-ROM (TWAIN Driver, User's Manual (PDF), PLUS TOOLBOX Software), Wall Mounting Brackets.

\*1: A printer is not included. Printer must be purchased separately. Printer language compatibility does not ensure the printer connectivity. Be sure to ask your local dealers for compatible printer before purchase. \*2: Not correspond to USB2.0 High-speed. \*3: A USB Flash Memory is not included. \*4: The conditions subject to change depends on sales area. \*5: Stand Kit is optional.

PLUS Vision Corp.  
**Products Catalog**



**Touchboards**  
205 Westwood Ave, Long Branch, NJ 07740  
Phone: 866-94 BOARDS (26273) / (732)-222-1511  
Fax: (732)-222-7088 | E-mail: sales@touchboards.com

**PLUS**

- COPYBOARD M-12 SERIES
- COPYBOARD C-12 SERIES
- COPYBOARD CR-5 SERIES
- COPYBOARD BF-041 SERIES

# Share the Ideas and Plans you've created on the board as digital files or as print outs.

## —Copyboards should be a requirement for every meeting room

Have you ever felt unsure about the value of meetings where flipcharts or whiteboards are used?

For those who need to get something more out of their meetings and increase their meeting productivity, a perfect solution will be a Copyboard.

A Copyboard is an advanced recording device that enables digital saving or printing out of the data written on the board's surface.

With a Copyboard, you no longer need to take notes. In meetings where Copyboards are used, every member can concentrate on the discussion as well as contribute their ideas by writing and drawing on the board's surface.

At the end of the meeting, all of the important details can be shared - digitally or printed out.

More lively discussions, with better comprehension and, ultimately, better results, can be expected when a Copyboard is used. Quickly come to a consensus in meetings and quickly take action.

And, of course, by saving and sharing digital files it helps contribute to a paperless office.

A Copyboard frees you from taking notes and allows your audience to concentrate on the discussion.

One touch saving of what you write/draw frees you from taking notes and from recording the minutes of the meeting.



Save to a USB Memory stick as an image file.

The Copyboard allows you to save the notes written on the board to a USB memory stick in an image file format such as JPG, PNG, or PDF. Once saved, it is easy to distribute these files as attachments to emails and place them into MicroSoft Office™ documents such as Word or PowerPoint files.



Make a hardcopy of the writings / drawings directly from the on-board printer.

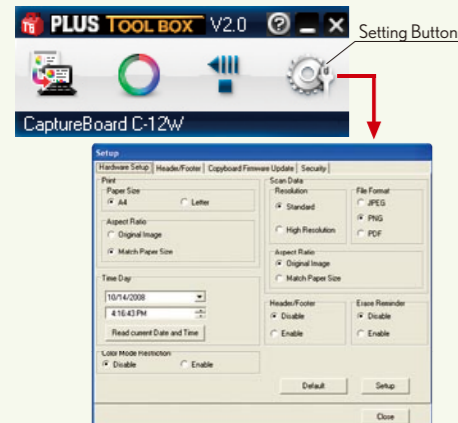
You can keep the contents of the Copyboard in tangible paper form by using the on-board printer connected via USB cable.



## PLUS copyboards are easy to use and easy on the environment as well.

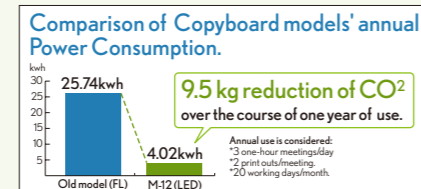
### PLUS TOOLBOX

The Toolbox is the integrated software that enables Plug & Play communication between the Copyboard and the PC. It is also used to establish the setting of various features of the Copyboard and Captureboard. You can set Security, Header & Footer and update the Firmware, etc.



### LED Light Source

LEDs have been newly adopted for use in the scanning light source, replacing previous Fluorescent Lamp or Cold Cathode Fluorescent Lamp-CCFL. Because of this, power consumption has been decreased to 1/6 of that of the older model.



### File Formats

You can choose among 3 image file formats; JPEG, PNG and PDF.



### Erase Reminder

Reminds you to erase the writings & drawings which may have been inadvertently left on the scrolled surface of the Copyboard. This feature enhances information security by reminding you to erase the proprietary writings/drawings on the scrolled surface of the Copyboard that may be otherwise read by a third party.



### Color Mode Restriction

When this feature is set, the "Color" button is disabled. Only monochrome printing and saving are available.



### Cable Management

The AC adapter and printer cable can be concealed from view. Integrated wiring results in a clean and well organized appearance.

### Explanation of Icons that represent features

These icons represent the Type of board.

Stand Type for room to room mobile use or Wall-mount Type for fixed installation and space-saving.

You can choose Color printer or Monochrome printer.

When this feature is set, the "Color" button is disabled allowing the users to print and save in monochrome only.

The Firmware can be easily updated by the user. (Update software can be downloaded from PLUS Vision web site.)

Models consist of the standard 2-surface type or the 5-surface type (4 writing surfaces + 1 projector screen).

3 sizes of Copyboard are available to suit any customer requirement.

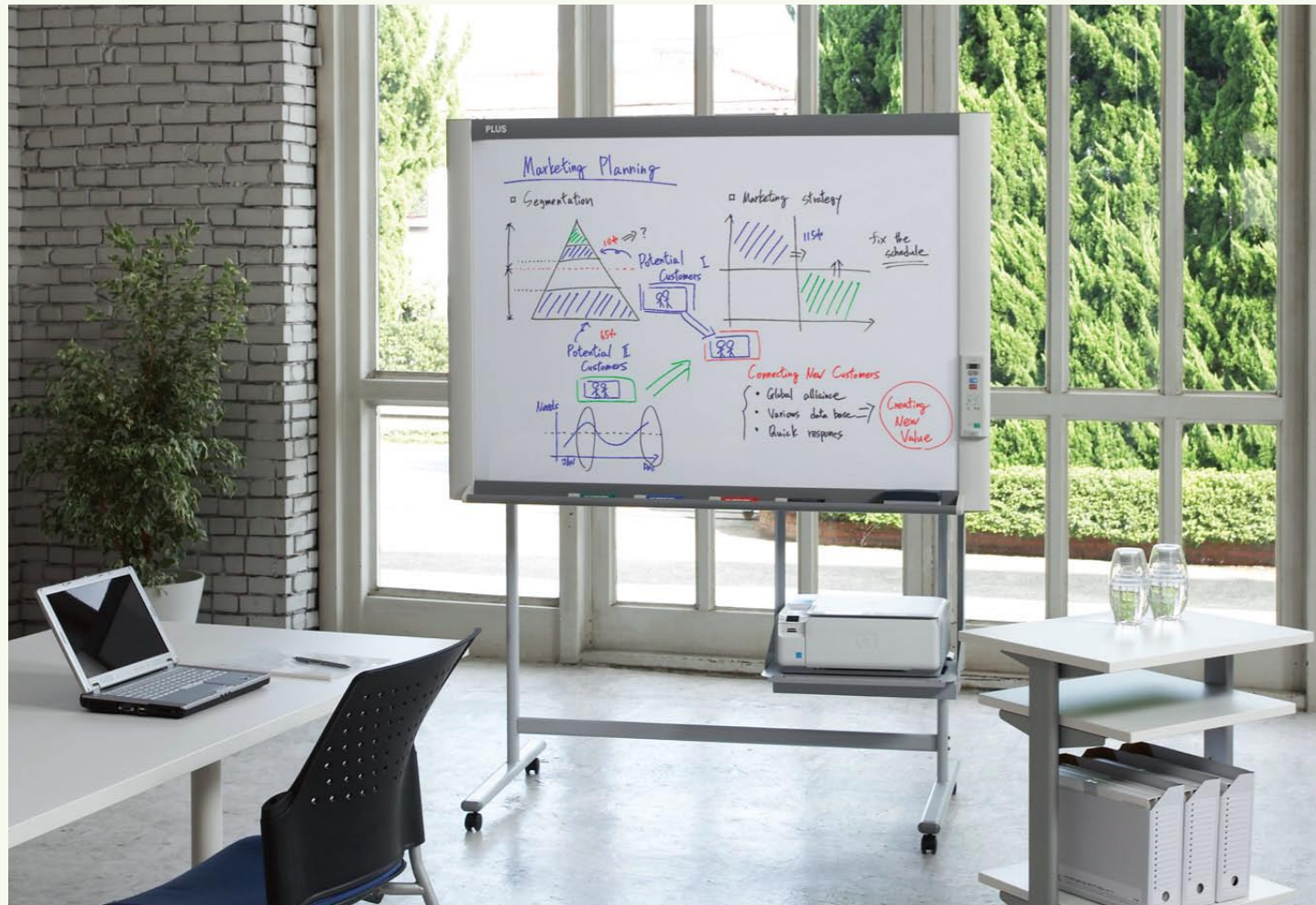
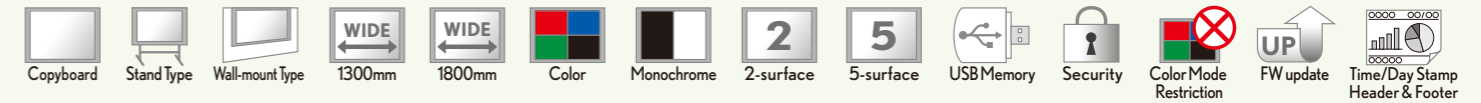
USB port for instantly saving to a USB Memory stick.

Allows the Copyboard to be set so that proprietary information cannot be leaked. (To enable this feature, customer registration from the PLUS Vision Web page is required.)

You can insert information such as company logos, as well as add a Time/Day Stamp in the header and footer area of your documents.

# COPYBOARD M-12 SERIES

Easy operation for compiling meeting notes as digital data or printed copies & Enhanced Security.



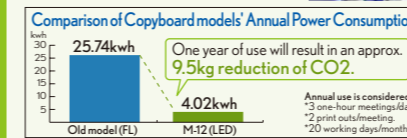
## Usage

### 1 Save to the USB Memory



**\*One push of the button starts scanning.**  
This simple operation is all that is needed to save the writing and drawings on the board as a digital file or print out.

**\*LED Lighting System - Environmentally Friendly & Quick Start**  
By utilizing an energy efficient RGB LED Lighting System, power consumption has been decreased to 1/6 of that of the previous model.



**\*Erase Reminder**  
Reminds you to erase the writings & drawings which may have been inadvertently left on the scrolled surface of the Copyboard. This feature enhances information security reminding you to erase the proprietary writings/drawings on the scrolled surface of the Copyboard that may be read by a third party.

### 2 Save to the PC



**\*USB Memory compatible.**  
USB memory port is located at the bottom of the control panel. When done writing on the sheet of the Copyboard, the user can save the information to USB memory stick and the quickly continue their presentation without breaking the rhythm of the meeting.

**\*Enhanced PC connectivity**  
It is very easy to connect the Copyboard to your PC via a USB cable connected. The user can control the Copyboard from the PC, change the settings and save images.

**\*The digital file formats**  
Choose among JPEG, PNG and PDF for saving the digital data.

**\*Enhanced Security**  
The ability to save data to a USB memory stick and/or to a PC can be changed by accessing the Security setting through a PC. The setting can be locked by use of a password.

\*USB Memory is not an included accessory.  
\*One sheet surface of data, in color, is approx.200KB. Save around 4,500 files onto a 1GB USB memory stick.

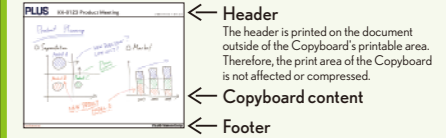
### 3 Print out directly from the on-board printer



**\*Color/Monochrome print**  
With the push of a button, you can select either beautiful color prints or cost-saving monochrome prints.

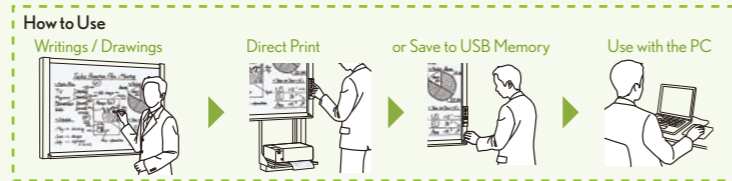
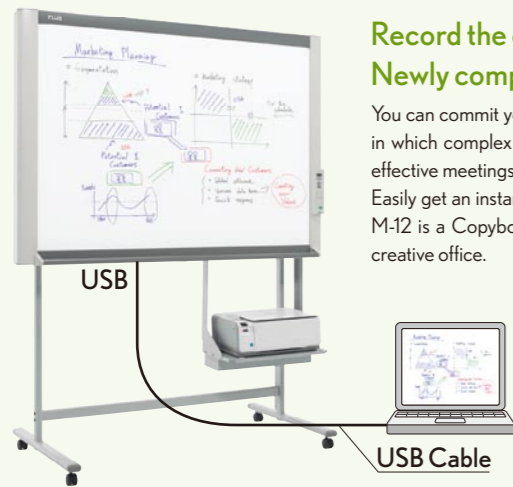
**\*Color Mode Restriction**  
Color print and color image saving can be disabled. (When this feature is activated, the "Color" button does not respond when it is pressed.)

**\*Print Setting**  
You can set the paper size, Time Day Stamp, Header & Footer from the PC. Hardcopy paper prints help when organizing and filing meeting minutes.



Record the every detail of important keywords, figures so smart.  
Newly compatible with popular picture file formats like PDF and JPEG.

You can commit your attention to the meeting rather than to taking notes when a Copyboard is used. Whether it is a meeting in which complex figures are discussed, or a creative meeting with detailed drawings, or if it is simply brain storming, more effective meetings can be achieved by using a Copyboard. Easily get an instant print out of the meeting for distribution on the spot, or create a file to be sent as an email attachment. The M-12 is a Copyboard that boosts meeting productivity in a convenient, speedy and secure fashion. It is a prerequisite for a creative office.



## Scan Save Print

**\*Scanning starts with the push of a button**  
Saving images or creating instant prints is just a button-push away.

**\*LED Light Source= Low Power Consumption and Quick Start**  
The adoption of an LED light source provides for environmentally friendly low power consumption and quicker start time than that of the previous models which employed a fluorescent light source.

**\*Erase Reminder**  
Reminds you to erase the writings & drawings which may have been inadvertently left on the surface of the Copyboard.

**\*USB Memory compatible**  
USB memory port is located under the control panel. 1GB USB memory can save up to 4800 pictures of the drawings / writings.

**\*Enhanced PC connectivity**  
It is very easy to connect the Copyboard to your PC via a USB cable connected to the USB port on the bottom of the main unit. The user can control the Copyboard from the PC, change the settings and save images.

**\*3 digital file formats**  
You can choose among PNG, PDF and JPEG to save the digital data.

**\*Enhanced Security**  
The ability to save data to a USB memory stick and/or to the PC can be disabled by changing the Security setting through a PC.

**\*Printer Settings**  
You can set the paper size, Time Day Stamp, Header & Footer from the PC.

**\*Color Mode Restriction**  
Color print and color image saving can be disabled. (When this feature is activated, the "Color" print button does not respond when it is pressed.)

## Lineup



**Multi-panels model**  
(4 writing surfaces and Projection Screen)  
M-125S  
Board size: W1300 x H920mm



**Wide Panel model**  
(2 writing Surfaces)  
M-12W  
Board size: W1800 x H920mm



**Standard Panel model**  
(2 writing Surfaces)  
M-12S  
Board size: W1300 x H920mm



**Stand-mount Without printer**



**Wall-mount without printer**

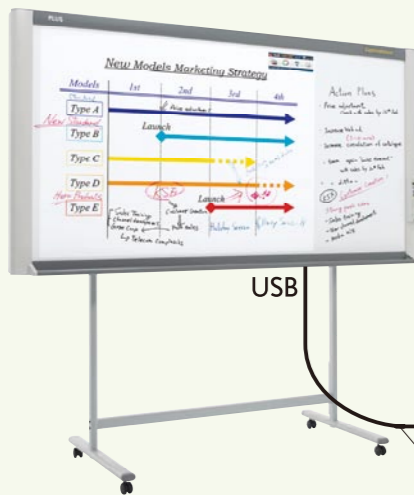
## Spec

	M-12S	M-12W	M-125	
<b>BOARD</b>	Board Surface Panel Effective Reading Area Number of Pages Sheet Driving Method Ruled Lines Writing Instruments Reading Method USB Port	W 1300 x H 920 mm (51.2 x 36.2 inches) W 1280 x H 900 mm (50.4 x 35.4 inches) 2 Motorized / Manual 50 mm (2 inches) Squares Dry Erase Whiteboard Markers (Black/Red/Blue/Green) CCD Optical Sensor (RGB LED) 3 Ports Lower Part of Board: A-Type 1Port (for Printer), B-Type 1Port (for PC) Control Panel: A-Type 1Port (for USB Flash Memory)	W 1800 x H920 mm (70.9 x 36.2 inches) W 1780 x H900 mm (70.1 x 35.4 inches) 4 + 1 Projection Screen Motorized	W 1300 x H 920 mm (51.2 x 36.2 inches) W 1280 x H 900 mm (50.4 x 35.4 inches)
<b>PRINTER</b>	Compatible Printers(Subject to printer models) <sup>1</sup> Paper Colors Print Density Interface	Inkjet (HP PCL3e/PCL 3 GUI/LIDIL, LEXMARK Z2300/Z320, EPSON Proprietary Language Compatible) Laser (SAMSUNG Printer Language (SPL) Compatible) A4-size(210 x 297 mm) / Letter-size (8.5 x 11 inches) Plain Paper Color or Monochrome 300dpi USB1.1or USB2.0 Full-speed Mode <sup>2</sup>		
<b>EXTERNAL MEMORY</b>	Type File Format	USB Flash Memory <sup>3</sup> JPEG PNG and PDF Format		
<b>PC CONNECTIVITY</b>	Interface File Format Supported OS	USB1.1or USB2.0 Full-speed Mode <sup>2</sup> JPEG PNG and PDF Format Microsoft Windows 2000 Professional (Service Pack 4 or Later) / Windows XP (Home Edition/Professional Edition Service Pack 2 or Later) / Windows Vista (32bit)		
<b>OPERATING CONDITIONS</b>	Temperature Humidity	10 - 35 °C (Operation) 30 - 85 % (No condensation)		
<b>POWER SUPPLY</b>	Power Source Power Consumption	AC Power 100-240 V, 50-60 Hz 5 W or less (Standby), 5 W (Power-on), 40 W (Operation)		
<b>DIMENSIONS</b>	Outer Dimensions with Stand <sup>4</sup> (Max.)	W 1470 x D 700 x H 1970 mm W 57.9 x D 27.6 x H 77.6 inches	W 1970 x D 700 x H 1970 mm W 77.6 x D 27.6 x H 77.6 inches	W 1470 x D 700 x H 1970 mm W 57.9 x D 27.6 x H 77.6 inches
<b>WEIGHT</b>		41 kg / 90.4 lb	45 kg / 99.2 lb	45 kg / 99.2 lb
<b>INSTALLATION</b>			Stand / Wall-Mount	
<b>ACCESSORIES</b>				Markers (Black, Red, Blue, Green), Eraser, AC Power Adaptor, USB Cable (3 m Length), User's Manual, Assembly Set-up Manual, Quick Guide, CD-ROM (TWAIN Driver, User's Manual (PDF), PLUS TOOLBOX Software), Printer Table, Wall Mounting Brackets.

<sup>1</sup>: A printer is not included. Printer must be purchased separately. Printer language compatibility does not ensure the printer connectivity. Be sure to ask your local dealers for compatible printer before purchase. <sup>2</sup>: Not correspond to USB2.0 High-speed. <sup>3</sup>: A USB Flash Memory is not included. <sup>4</sup>: The height is adjustable at 1770, 1870, and 1970 mm (69.7, 73.6 and 77.6 inches).

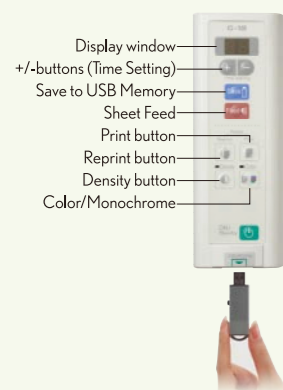
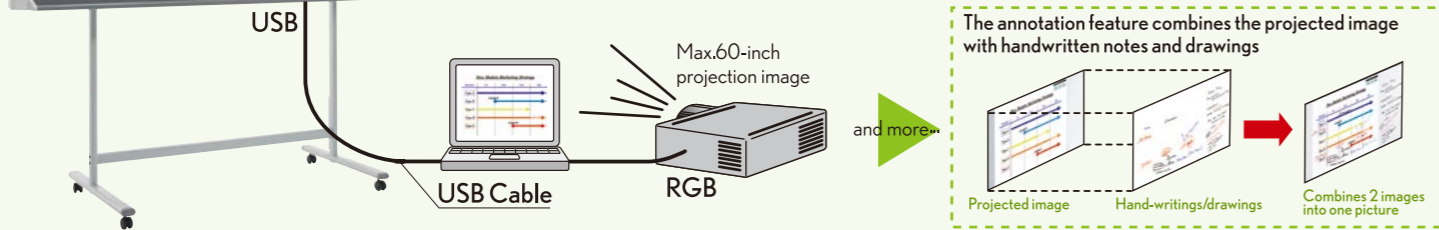
# CAPTUREBOARD C-12 SERIES

Write over the projected image, then combine and save to a PC.



The projected image and all of the important comments are combined and saved to a PC. The C-12 invigorates presentations and adds value to any meeting in which a projected image is discussed.

The Captureboard has been developed to make meetings more productive for users who want to annotate over the image projected on the screen. The audience can concentrate on the meeting while the presenter adds notes and comments directly over the projected image, to then be saved together in one file. The new Captureboard C-12 has added improvements including security enhancements, increased printing options, the ability to include a Header & Footer, and much more.



<p><b>Scan</b></p> <p>Display window +/- buttons (Time Setting) Save to USB Memory Sheet Feed Print button Reprint button Density button Color/Monochrome</p>	<p><b>Save</b></p> <p><b>*Scanning starts with the push of a button</b> Saving images or creating instant prints is just a button-push away.</p> <p><b>*LED Light Source= Low Power Consumption and Quick Start</b> The adoption of an LED light source provides for environmentally friendly low power consumption and quicker start time than that of the previous models which employed a fluorescent light source.</p> <p><b>*Erase Reminder</b> Reminds you to erase the writings &amp; drawings which may have been inadvertently left on the surface of the Copyboard.</p>	<p><b>Print</b></p> <p><b>*USB Memory compatible</b> USB memory port is located under the control panel. 1GB USB memory can save up to 4800 pictures of the drawings / writings.</p> <p><b>*Enhanced PC connectivity</b> It is very easy to connect the Copyboard to your PC via a USB cable connected to the USB port on the bottom of the main unit. The user can control the Copyboard from the PC, change the settings and save images.</p> <p><b>*3 digital file formats</b> You can choose among PNG, PDF and JPEG to save the digital data.</p> <p><b>*Enhanced Security</b> The ability to save data to a USB memory stick and/or to the PC can be disabled by changing the Security setting through a PC. <small>*To use this feature, it is necessary to register from PLUS Vision web site.</small></p>
---	---	--

## Usage

- 1 Meetings with the active exchange of ideas. The annotation feature makes for truly productive meetings.**

**\*The Captureboard's scroll sheet surface is designed to minimize projector glare, called a "hot spot," while maintaining writing/drawing performance.**
- 2 Save the projected image combined with the annotations.**

**\*Select JPEG, PDF or PNG as a digital file format.**

Sheet scroll icon.  
(The projected image does not scroll)
- 3 The annotated image appears when using the dedicated software on the PC. Enhance your presentation using the annotated data.**

**\*Works well with MicroSoft Excel, Word and PowerPoint!**

## Lineup



## Consumables

Please use the Dedicated Eraser and Markers to maintain the maximum writing / erasing performance.

**Dedicated Eraser**

**Dedicated Marker**

\*Total length: 132mm \*Diameter: 16mm \*Direct ink feed  
\*Alcohol-based ink  
\*Use of other markers and erasers may result in stains on the sheet surface.

## Spec

	C-12S	C-12W
<b>BOARD</b>	Board Surface Panel Effective Reading Area Number of Pages Sheet Driving Method Ruled Lines Writing Instruments Reading Method USB Port	W 1300 x H 920 mm (51.2 x 36.2 inches) W 1280 x H 900 mm (50.4 x 35.4 inches) 2 Motorized - Dry Erase Write board Markers (Black/Red/Blue/Green) CCD Optical Sensor (RGB LED) 3 Ports Lower Part of Board: A-Type 1Port (for Printer), B-Type 1Port (for PC) Control Panel: A-Type 1Port (for USB Flash Memory)
<b>PRINTER</b>	Compatible Printers(Subject to printer models)*1 Paper Colors Print Density Interface	Inkjet (HP PCL3e/PCL 3 GUI/LIDL, LEXMARK Z2300/2320, EPSON Proprietary Language Compatible) Laser (SAMSUNG Printer Language (SPL) Compatible) A4-size(210 x 297 mm) / Letter-size (8.5 x 11 inches) Plain Paper Color or Monochrome 300dpi USB1.1 or USB2.0 Full-speed Mode*2
<b>EXTERNAL MEMORY</b>	Type File Format	USB Flash Memory*3 JPEG PNG and PDF Format
<b>PC CONNECTIVITY</b>	Interface File Format Supported OS	USB1.1 or USB2.0 Full-speed Mode*2 JPEG PNG and PDF Format Microsoft Windows 2000 Professional (Service Pack 4 or Later) / Windows XP (Home Edition/Professional Edition Service Pack 2 or Later) / Windows Vista (32bit)
<b>OPERATING CONDITIONS</b>	Temperature Humidity	10 - 35 °C (Operation) 30 - 85% (No condensation)
<b>POWER SUPPLY</b>	Power Source Power Consumption	AC Power 100-240 V, 50-60 Hz 5W or less (Standby), 5W(Power-on), 40W(Operation)
<b>DIMENSIONS</b>	Outer Dimensions with Stand*4 (Max.)	W 1470 x D 700 x H 1970 mm W 57.9 x D 27.6 x H 77.6 inches W 1970 x D 700 x H 1970 mm W 77.6 x D 27.6 x H 77.6 inches
<b>WEIGHT</b>		41 kg / 90.4 lb 45 kg / 99.2 lb
<b>INSTALLATION</b>		Stand / Wall-Mount
<b>ACCESSORIES</b>		Markers (Black, Red, Blue, Green), Eraser, AC Power Adaptor, USB Cable (3 m Length), User's Manual, Assembly Set-up Manual, Quick Guide, CD-ROM (TWAIN Driver, User's Manual (PDF), PLUS TOOLBOX Software), Printer Table, Wall Mounting Brackets.

\*1: A printer is not included. Printer must be purchased separately. Printer language compatibility does not ensure the printer connectivity. Be sure to ask your local dealers for compatible printer before purchase. \*2: Not correspond to USB2.0 High-speed. \*3: A USB Flash Memory is not included. \*4: The height is adjustable at 1770, 1870, and 1970 mm (69.7, 73.6 and 77.6 inches).