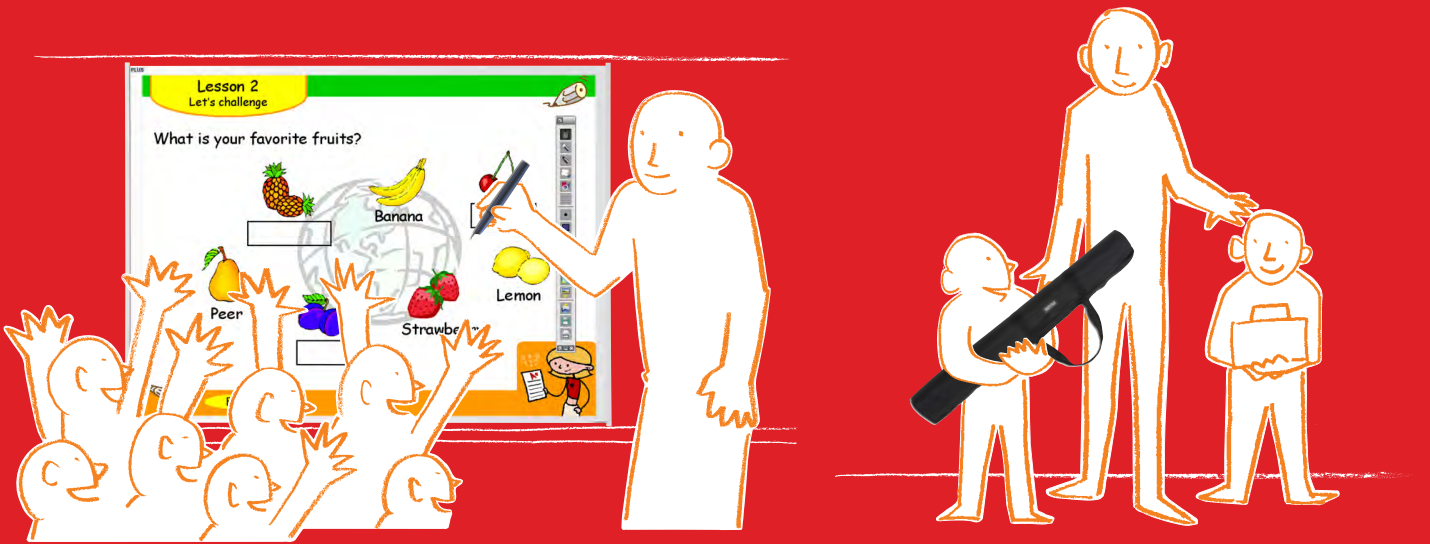
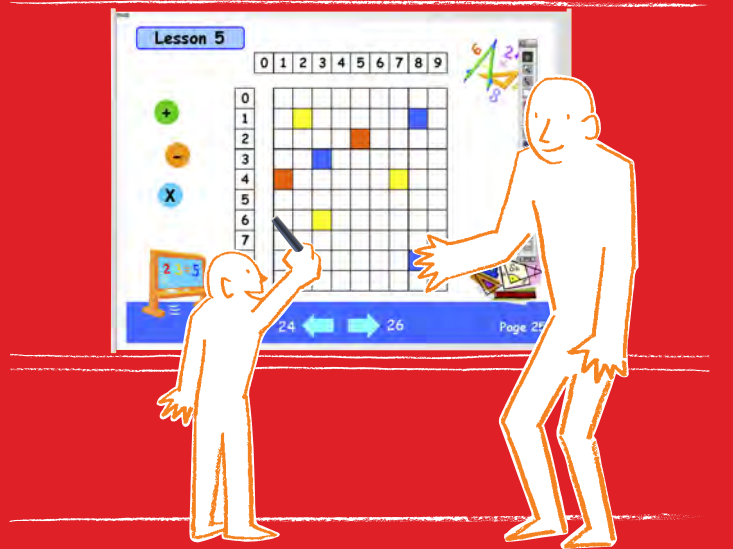
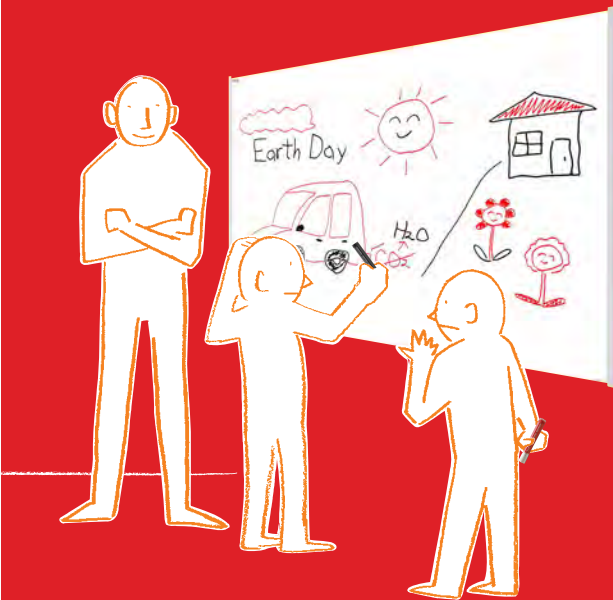


# PLUS



**A flexible Interactive Whiteboard  
that fits into your world.**



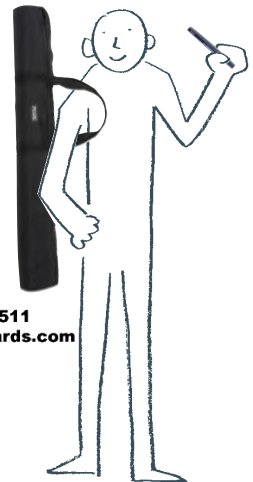
**PLUS Wireless Interactive Panel**

# UPIC

ltra portable interactive communication

**Touchboards**

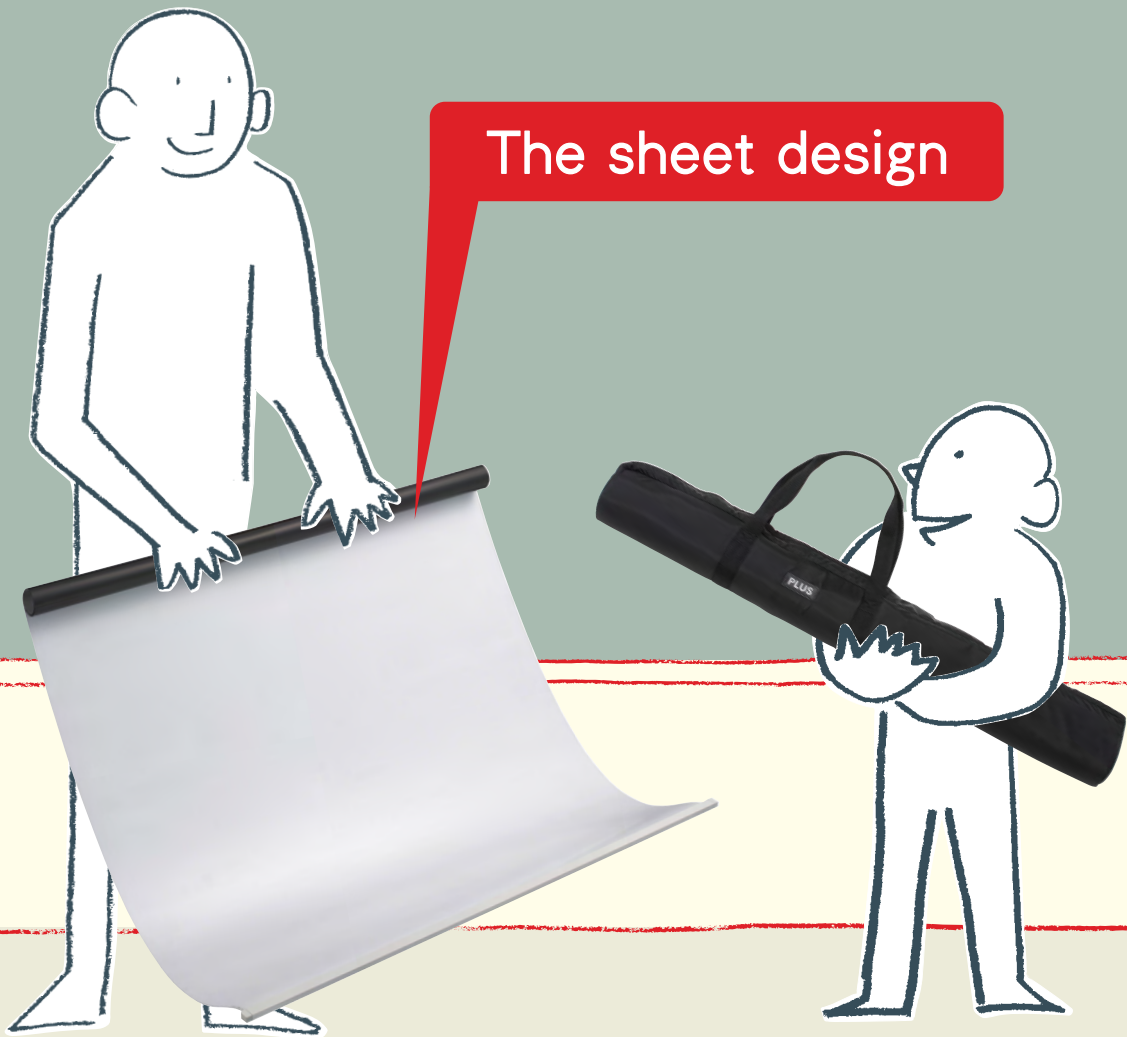
205 Westwood Ave, Long Branch, NJ 07740  
Phone: 866-94 BOARDS (26273) / (732)-222-1511  
Fax: (732)-222-7088 | E-mail: [sales@touchboards.com](mailto:sales@touchboards.com)



## Easy to use - Whenever & wherever you like.

Its thin, lightweight design makes it extremely portable.

Take it with you anywhere. To set it up, just attach the sheet to a chalkboard or whiteboard. The UPIC can be quickly set up in the short period of time between classes so that you can begin teaching immediately.



The sheet design

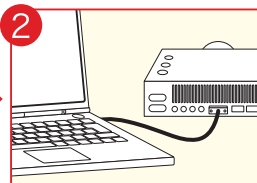


The quick set-up process.

That's it! You are set to go.



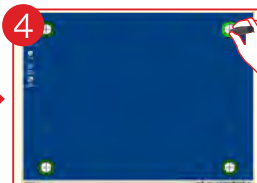
1 The magnetic sheet attaches easily.



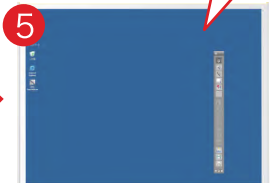
2 Start up your computer and projector.



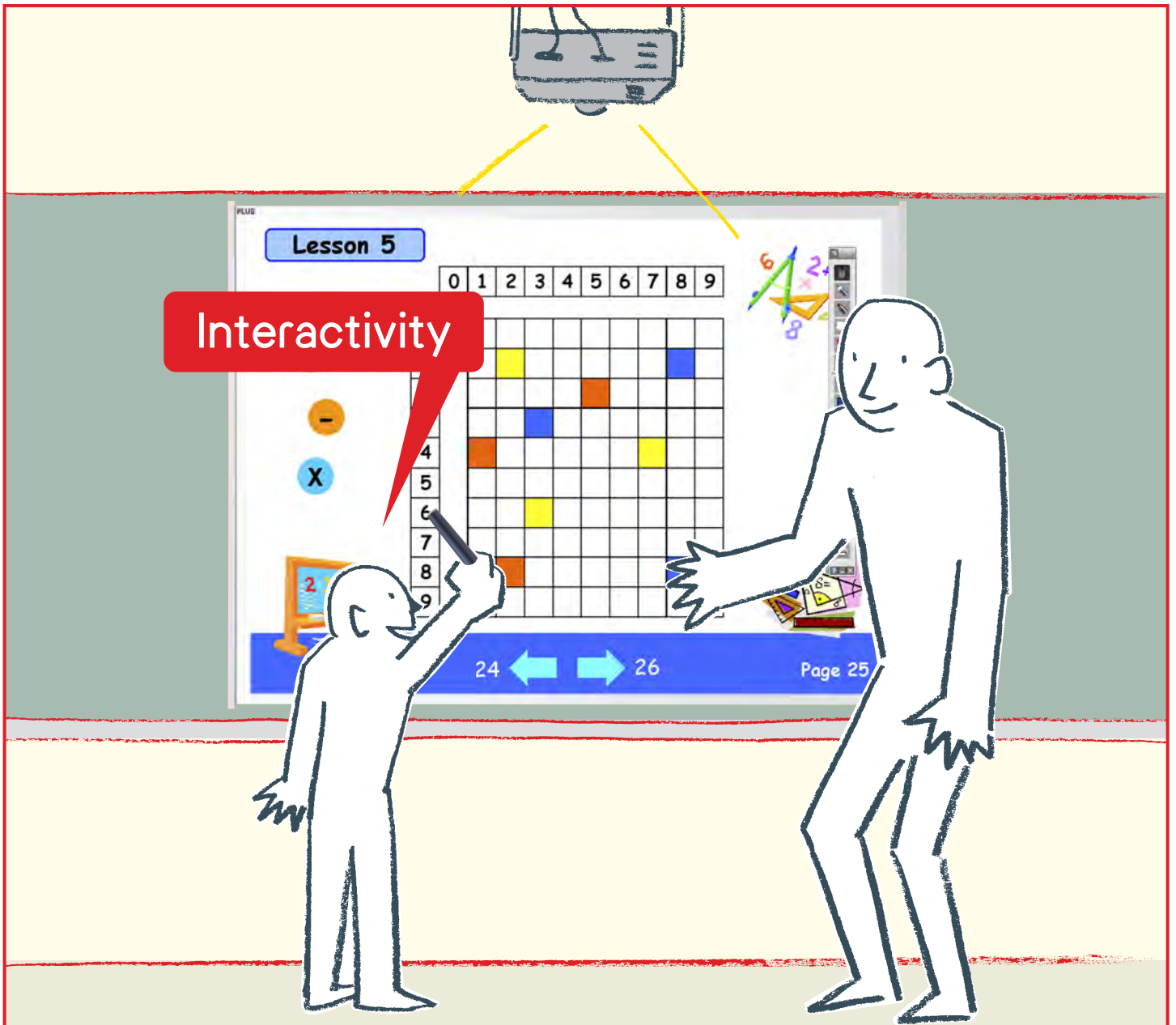
3 Remove the digital pen's cap. The "calibration pattern" appears automatically.



4 Tap the four marks in the corners of the projected image to calibrate the computer and projector.



5 Start the "Touch & Draw" software by double clicking the shortcut icon. The toolbar appears.



## Teachers and students are more engaged.

Teachers can directly operate a computer from the projected image. The UPIC works well with popular interactive educational software. Teachers can better direct their attention to their students when they don't have to worry about operating a computer or consulting a textbook. Teachers and students can draw and erase digitally, as well as insert graphics. Everything can then be saved as a digital image file.

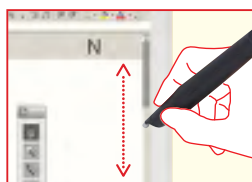
Tool icons are simple and intuitive.



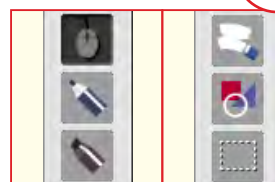
Click—just like with a mouse.



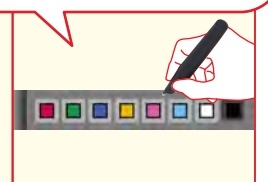
Drag & drop.



Scroll the viewing area.



Mouse, Pen functions, etc. Eraser, Figure functions, etc.

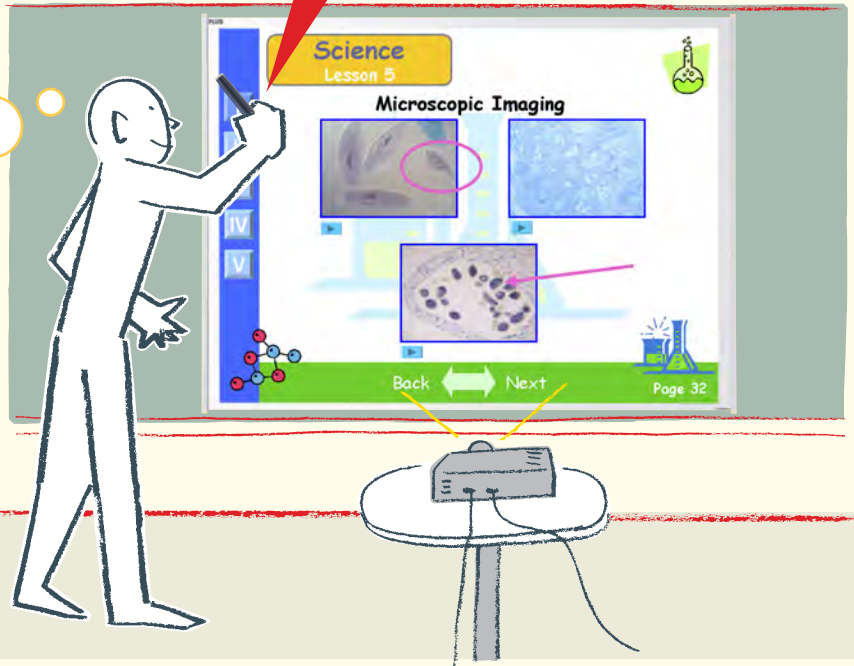
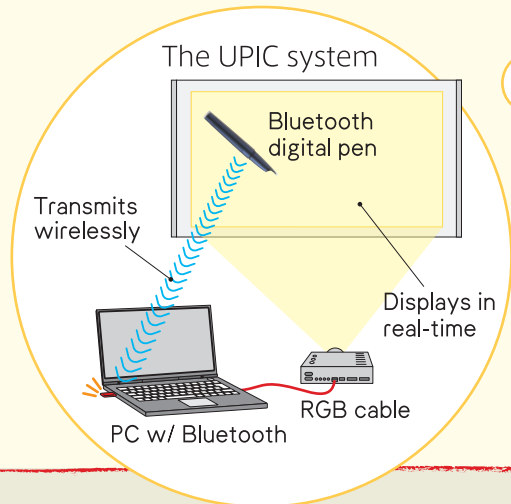


8 color choices.  
\*The menu bar can be switched between horizontal and vertical.

## Classes run more smoothly.

The digital pen communicates with the computer wirelessly. Also, no power cord is required since the panel does not require any power. There is never any concern that a teacher or a student might trip over a messy cord.

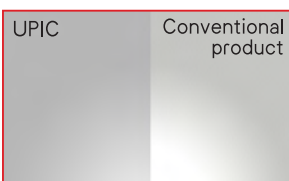
Wireless



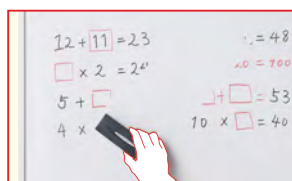
## Use as a standard whiteboard or projection screen

With the provided markers and eraser, you can write and erase just like when using a regular whiteboard. Furthermore the UPIC can be used as a projection screen. Its unique surface minimizes the reflection and glare of a projector making viewing projected images more comfortable.

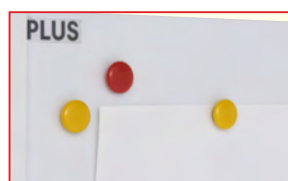
Unique surface



Minimal reflection.



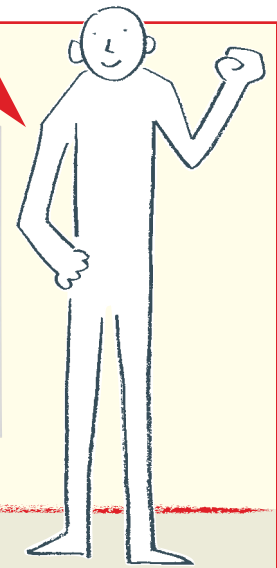
Erases smoothly.  
\*The provided exclusive eraser is required for erasing.



Use magnets with the panel.



# Reasonably Priced



The UPIC is less expensive than conventional Interactive whiteboards since the number of materials used in its construction are limited.

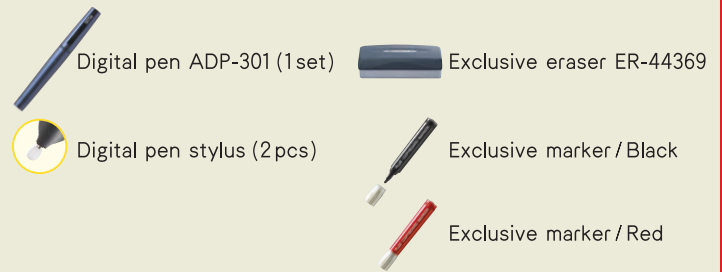
The price is very affordable. It will fit into your often tight education budget.






Package contents •All items fit neatly into the carrying case.



Options



## Specifications

	Model Name	UPIC-56M	UPIC-64M	UPIC-W72M
Panel	Type of Installation	Magnetic sheet type	Magnetic sheet type	Magnetic sheet type
				
	External dimensions*1	W 1160 x D 11.3 x H 865 mm W 45.7 x D 0.4 x H 34.1 inches	W 1330 x D 11.3 x H 995 mm W 52.4 x D 0.4 x H 39.2 inches	W 1630 x D 11.3 x H 1070 mm W 64.2 x D 0.4 x H 42.1 inches
	Weight*2	approx. 1.6 kg / 3.5 lb	approx. 2.1 kg / 4.6 lb	approx. 2.8 kg / 6.2 lb
	Size	W 1130 x H 845 mm/ W 44.5 x H 33.3 inches	W 1300 x H 975 mm/ W 51.2 x H 38.4 inches	W 1600 x H 1050 mm/ W 63 x H 41.3 inches
	Projection area size	56 inch (4:3) Max	64 inch (4:3) Max	72 inch (16:9) / 70 inch (4:3) Max
	Reading system	Reading Anoto dot pattern by using Anoto digital pen		
Digital Pen*3*4*5	Power Supply	AAA alkali battery (1.5V) x 1		
	Interface	Conforming to Bluetooth® 2.0 class		
	Main unit weight	Approx. 40g / 0.1 lb (including battery)		
Operating conditions (including digital pen)	Temperature	0°C~40°C		
	Humidity	30~85% (with no condensation)		
Accessories		Digital pen x 1, Stylus for Digital pen x 1, AAA alkali battery (1.5V) x 1, Markers (Black and Red x 1), Eraser x 1, Carrying Case x 1, User's manual(simple) x 1, Manual for Digital pen x 1, CD-ROM (UPIC Utility, UPIC Touch & Draw, User's manual(detailed)[PDF]) x 1		
Computer requirements*6	Compatible operating system	XP (Home Edition / Professional Edition Service Pack 3 or later)/Vista 32-bit versions		
	Compatible computer types	Preinstalled models operating on one of the operating system above		
	CPU	Pentium 4 processor or later		
	Memory	512MB or greater		
	Hard disk	200MB or greater		
	Display resolution	1024x768 pixels or greater, High Color or greater		

\*1: Including maximum protruding parts.

\*2: Not including digital pen or accessories.

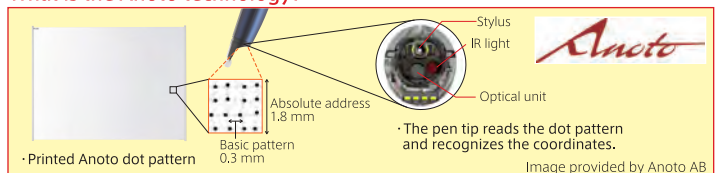
\*3: A computer and digital projector are required to draw with the digital pen.

\*4: For details on operating principles, etc., see <http://www.anoto.com/>

\*5: This product is based on Anoto technology.

\*6: This product is not compatible with operating systems: Windows 95/98E/2000/Me/NT/Server 2003/Mac OS.

## What is the Anoto technology?



The PLUS Group  
**PLUS Vision Corp.**

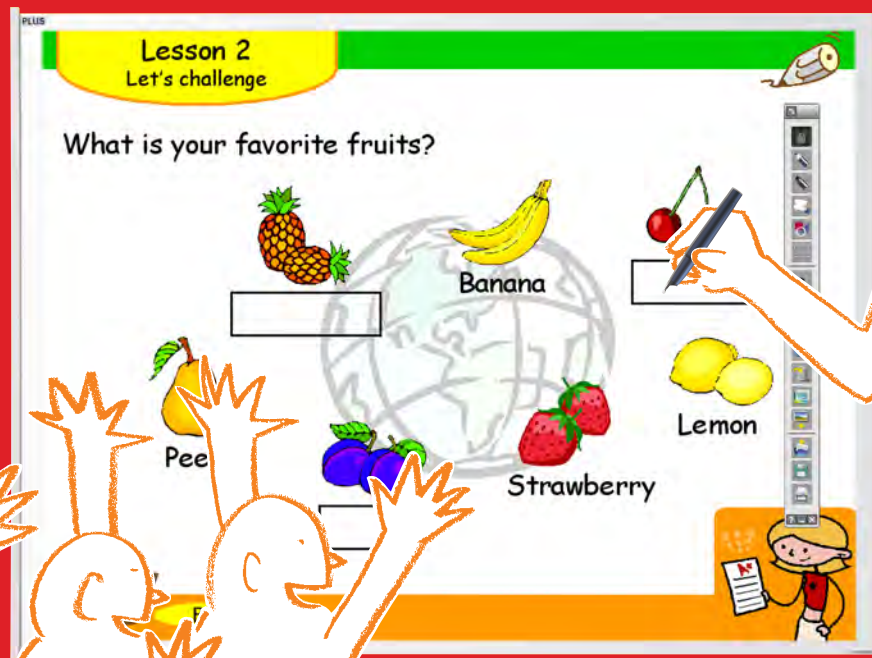
**Touchboards**

205 Westwood Ave, Long Branch, NJ 07740  
Phone: 866-94 BOARDS (26273) / (732)-222-1511  
Fax: (732)-222-7088 | E-mail: [sales@touchboards.com](mailto:sales@touchboards.com)

More engaging lessons result in improved understanding.

“PLUS Wireless Interactive Panel”

# UPIC



The Interactive Whiteboard has created a new way of teaching. The ability to project learning material and then interact with it is becoming increasingly popular. However, conventional Interactive Whiteboards are just that: boards. Because of this, they lack mobility.

The PLUS Wireless Interactive Panel **UPIC** offers you greater freedom in the way in which you teach. The winning combination of being both wireless and portable creates an easy-to-use interactive classroom.

