

CTM-VESA Installation Instructions

Read and understand the installations carefully for a proper installation of the wall mount.

Step 1

Invert the monitor display and place it on a soft and flat surface. Locate the mounting points on the back of the monitor display. Remove the existing screws from the monitor display. Remove the floor stand that comes with the plasma monitor. Install the mounting bracket to the plasma monitor and secure by using the six (6) M4 x 12 (mm) Phillip screws (supplied) to the mounting points that will best work for the installation environment.

NOTE: Do not over tighten the bracket mounting screws as damage to the monitor display internal mounting threads could occur.

Step 2

Temporarily slide the round steel rod portion of one of the CTM plate fully into the bottom receiving slots of the installed plasma mounting brackets. Measure the distance between the bottom outside edge of the plasma monitor and the bottom outside edge of the lower wall mounting plate. Add the desired bottom edge height of the display to the distance between the bottom edge of the wall plate and the bottom edge of the display to determine the correct mounting height of the lower wall plate. **Example:** Overall desired height for the bottom outside of the display is 60". Difference between the bottom edge of the display and the bottom edge of the lower wall plate fully installed in the lower receiving slots of the brackets is 4" means the lower wall plate bottom outside edge should be placed at 64" from the floor ($60" + 4" = 64"$). Determine the desired wall location and its ability to properly support the weight of the display (**See not in front of page**). Locate and mark the dual 16" wood stud centers closest to the desired plasma monitor placement area. Measure up from the floor the proper distance to the bottom edge of the lower wall plate and mark a level reference line on the wall. Place the lower portion of the wall plate edge on the reference line and mark the best six (6) each wall plate lag bolt mounting points through the wall plate slots on the wall. Drill $1/4"$ pilot holes on the six marked walls before installing the plate. Level the wall plate with the wall plate reference arrow pointing up to the wall using the six (6) 5/16" Lag bolts and flat washers (supplied).

Step 3

With the upper "clevis" tilt hooks on the plasma brackets in the flat on wall position raise the plasma display with brackets attached (2 people minimum recommended) and place the plasma display flat against wall with the upper and lower plasma bracket attaching slots slightly higher than the steel receiving rods of the upper and lower wall plates. With the plasma reasonably level lower the display until the display brackets receiving slots are fully installed into the upper and lower wall plate steel rods. Gently pull the left and right upper edges of the display to extend the mount to its maximum 10° tilt and install finger tight the two upper "clevis" arm 6 (mm) safety knobs one on each mounting bracket.

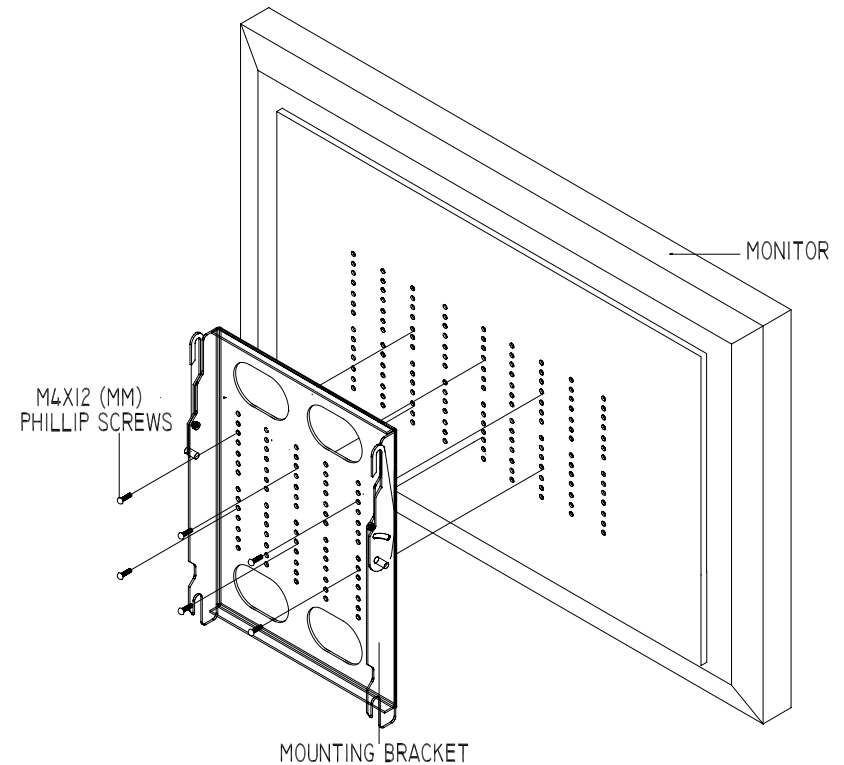
Note: The 8 (mm) nuts for your coarse tension adjustment and the 5 (mm) screws for your fine tension adjustment.

Note: To remove the display from the wall simply extend the display to its maximum tilt range, remove the two 6 (mm) safety knobs push the display back to its flat wall position and lift the unit up and out from the wall.

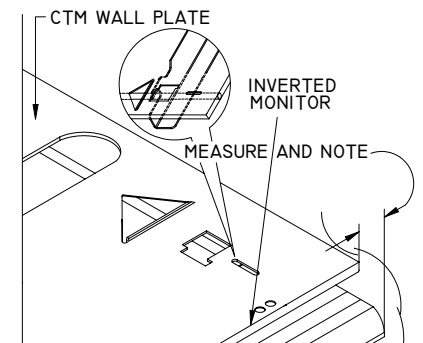
Step 4

Once the display on wall installation is complete you still can move the display from left to right or right to left to optimize the final position of the display on the wall by gently sliding the unit on the steel rods of the wall plate. This adjustment distance will vary depending on the display model being installed.

STEP 1



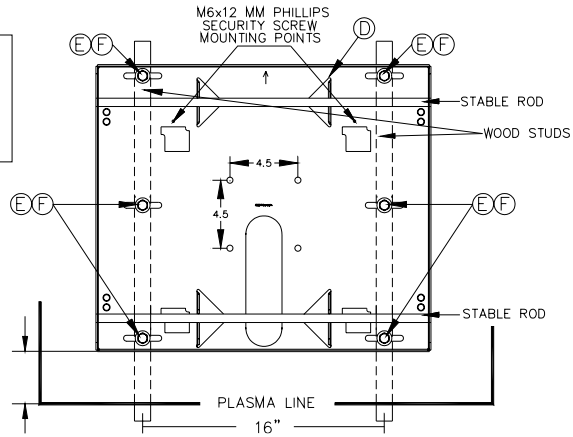
STEP 2



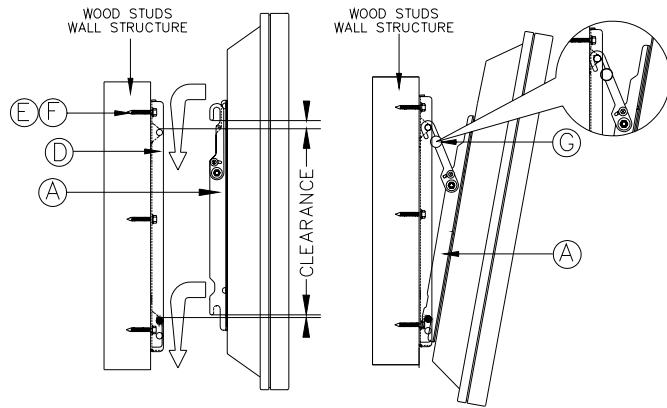
STEP 3

Note: Arrows on the wall brackets must be facing up prior to installation. Secure the lag bolts into the center of the wood stud.

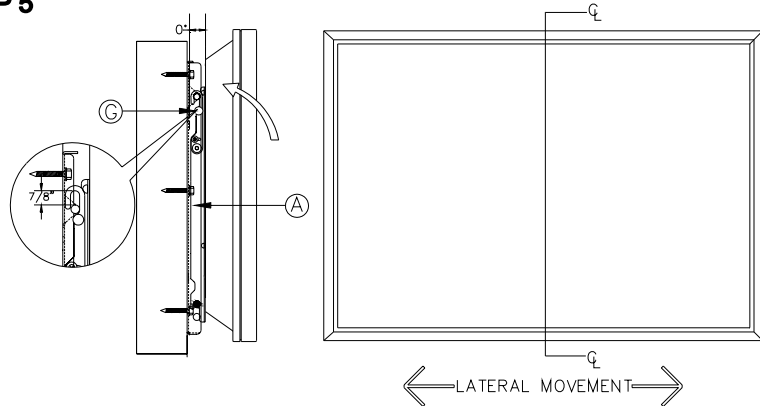
Note: If using the CTM with a floor stand or ceiling mount adapter use the (4.5") to secure the plate. Make sure you use the correct mounting hardware that comes with the stand or ceiling adapter unit. To secure the plates install the two (2) M6 x 12 (mm) Phillip security-screw behind the CTM plate.



STEP 4



STEP 5



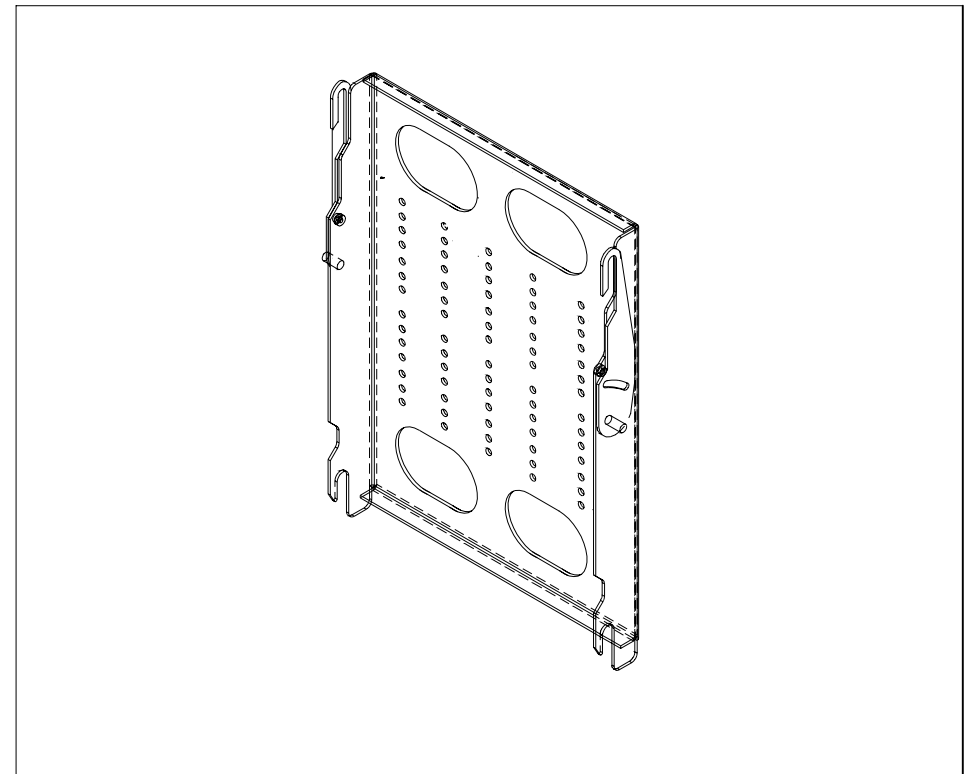
Note: When the display brackets receiving slots are fully installed into the upper and lower wall plate steel rods and the plasma is on its flat position, there is a 7/8" gap from the top of the rod to the end of the hook. This feature is to compensate for tilting.

CTM-VESA

BRAND	MODEL #	MP	HARDWARE	PACK
Mitsubi	LC0300, L30H/201	6	(6) 4(mm)x12(mm)	Pack 26

A	Mount Bracket	L/R
B	Hardware	See Chart
C	Nylon Spacers (SP) (if needed)	See Chart
D	CTM Wall Plate	1
E	5/16" Lag Bolts	6
F	5/16" Flat Washers	6
G	6 mm x 12 mm Securing Knobs	2

CTM-VESA MOUNTING POINTS (MP)





PLASMA DISPLAY MOUNT

CTM-VESA

Touchboards

205 Westwood Ave, Long Branch, NJ 07740

Phone: 866-94 BOARDS (26273) / (732)-222-1511

Fax: (732)-222-7088 | E-mail: sales@touchboards.com

PREMIER MOUNTS

A DIVISION OF PROGRESSIVE MARKETING INC.



3130 E. Miraloma Ave Anaheim, CA 92806 Ph (800) 368-9700 Fax (800) 832-4888 E-mail: pmpi@pmpi.com Web Site: www.mounts.com

The wall or ceiling should be capable of supporting a weight of 160 Lbs at least four (4) times the weight of the plasma display. More than 160 Lbs, the wall or ceiling must be reinforced. Proper installation procedure by qualified personnel as outlined in the installation instructions must be adhered to. Failure to do so could result in serious personal injury.