

Contents (Windows Program)

Installing SDP-950 Software 3

 System requirements 3

 Installing software 3

 Connecting SDP-950 Digital Presenter to PC 4

 Installing USB driver 5

 Installing SDP-950 program..... 7

 Installation tips 8

 How can I determine if my computer's USB port is enabled? 8

 How do I remove the USB driver and SDP-950 program? 9

 Can I update the USB driver for SDP-950 10

Running SDP-950 Program 11

 SDP-950 View Panel & Main Panel overview 13

Working with SDP-950 Program 14

 Using SDP-950 Control Panel 14

 SDP-950 Control Panel overview 15

 Saving the image into the computer HDD 19

 Printing the image 21

Troubleshooting (Windows Program)..... 24

Contents (Macintosh Program)

Installing SDP-950 Viewer Software 27

 System requirements 27

 Connecting SDP-950 Digital Presenter with your Macintosh 28

 Installing Software 28

Using the SDP-950 Software 30

 Launching the Software 30

 Looking at the Interface 30

 SDP-950 Viewer window..... 31

 Control window: Overview 32

 Controls 33

Capture and Print Image 38

 Capturing Image 38

 Printing the image 39

Troubleshooting (Macintosh Program)..... 40

Installing SDP-950 Software

The supplied SDP-950 program CD contains :

- USB driver
- SDP-950 program

To control your SDP-950 Digital Presenter on the PC, save the images into the computer HDD, or print the images, you must connect SDP-950 Digital Presenter to the PC through USB interface, then install the USB driver and SDP-950 program using the supplied program CD.

Follow the procedure below.

System requirements

To install the SDP-950 software, your computer must have at least the following system configuration :

- IBM or IBM compatible computer with a Pentium or higher processor.
- Windows 98 or later
(Windows 98, 98SE, ME, 2000 Professional, XP)
- Display : XGA 1024 x 768, 65536 colors or higher
- USB interface connector
- 16MB or higher RAM
- CD-ROM drive

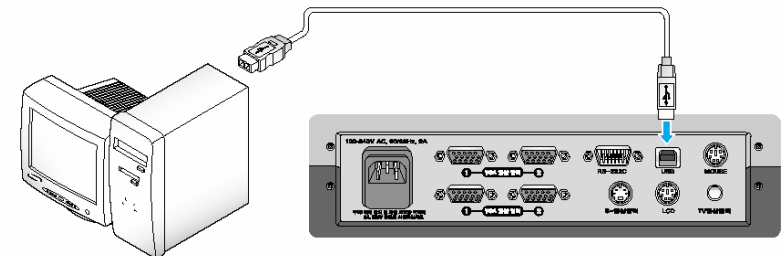
Installing software

To install the software

1. Connect your SDP-950 Digital Presenter to the PC with USB cable. See the next page.
 2. Install the USB driver. See page 5.
 3. Install the SDP-950 control program. See page 7.
- Follow the instructions below to complete the installation:

Connecting SDP-950 Digital Presenter to PC

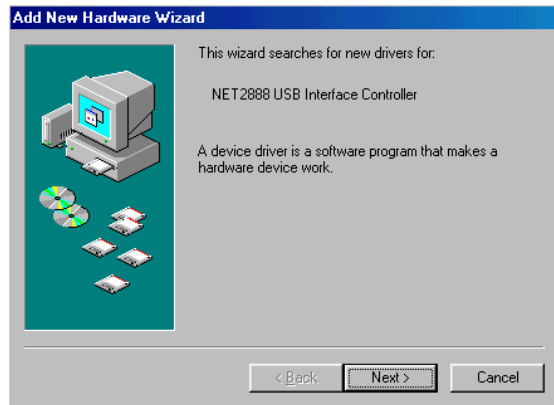
1. Make sure that both the SDP-950 Digital Presenter and computer are turned ON.
2. Plug one end of the USB cable into the USB port on the SDP-950 Digital Presenter.
3. Plug the other end into the USB port on the computer.



✓ **Note** : For information connecting on other AV device, refer to User's Guide which came with SDP-950 Digital Presenter.

Installing USB driver

1. The Add New Hardware Wizard dialog box appears. Click **Next**.



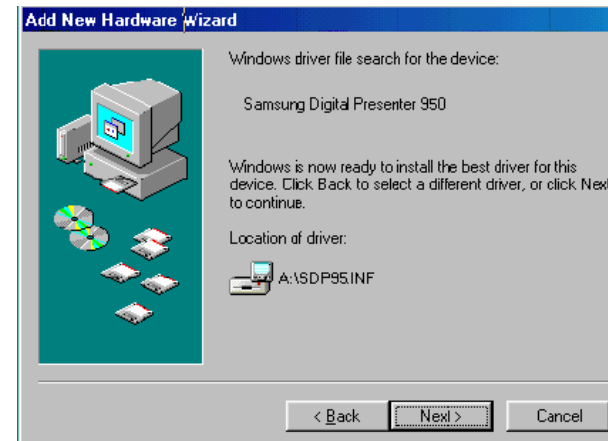
2. Put a checkmark on the **Search for the best driver for your device** box and click **Next**.



3. Insert the SDP-950 software into your floppy disk drive, then put a checkmark on the **CD-ROM drives** box and **Specify a location** box then type x:\ (where x is the drive letter for the CD-ROM drive).



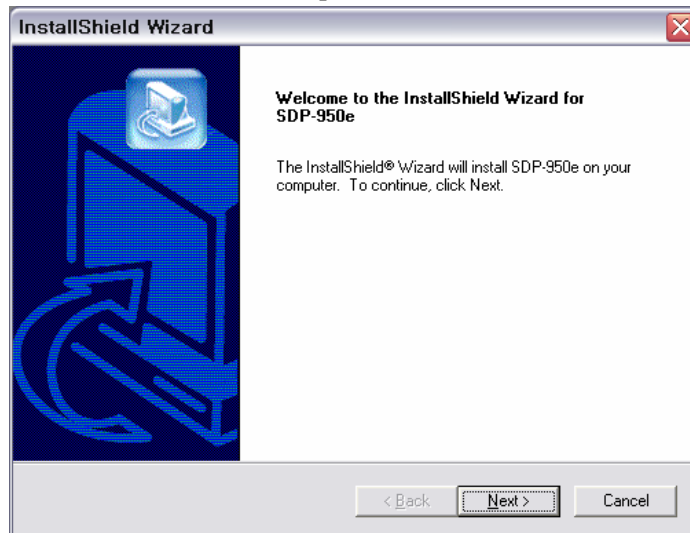
4. Click **Next**. The USB driver will be inserted.



5. Follow the instructions on the screen to complete the installation.

Installing SDP-950 program

1. From the **Start** menu, select **Run**, and type **D:\english\setup\Samsung Digital Presenter SDP-950.exe** where x is the letter of your CD-ROM drive, and click **OK**.
2. The Welcome window opens. Click **Next**.



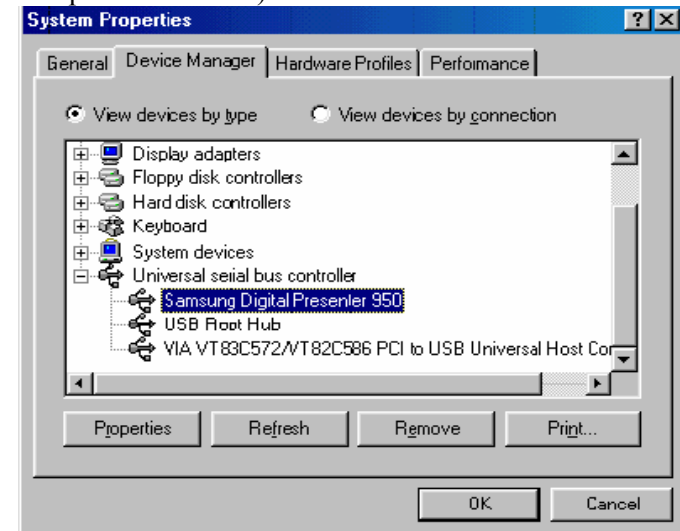
3. Follow the instructions on the screen to complete the installation. Restart your computer after the installation is complete.
4. After the SDP-950 software is properly installed, you see the **SDP950** icon created on the Windows desktop.



Installation tips

How can I determine if my computer's USB port is enabled ?

1. In Windows 98, select **Start⇒Setting⇒Control Panel**.
2. Double-click the **System** icon.
3. Click the **Device Manager** tab.
4. Click the plus (+) icon before the **Universal serial bus controller** item.
5. If you see a USB host controller and a USB root hub listed, USB is properly enabled. If you have multiple hubs on the USB chain, try connecting your Digital Presenter to a different hub or to another USB device. Also, make sure the cable connections are firm. (USB hubs are hardware devices into which you can plug multiple USB cables.)



How do I remove the USB driver and SDP-950 program ?

USB Driver :

- 1 In Windows 98, select **Start⇒Setting⇒Control Panel**.
- 2 Double-click the **System** icon.
- 3 Click the **Device Manager** tab.
- 4 Click the plus (+) icon before the **Universal serial bus controller** item.
- 5 From the **Universal serial bus controller** item, select **Samsung Digital Presenter 950**, then click **Remove**.
- 6 In the Confirm Device Removal dialog box, click **OK**.

SDP-950 Program :

- 1 Select **Start⇒Setting⇒Control Panel**.
- 2 Double-click the **Add/Remove Programs** icon.
- 3 From the Program list, click the **SDP950**, then click **Add/Remove**.

Can I update the USB driver for SDP-950 ?

Yes. You can update the USB driver file for the Digital Presenter if you have updated driver file. Do as follows

- 1 In Windows 98, select **Start⇒Setting⇒Control Panel**.
- 2 Double-click the **System** icon.
- 3 Click the **Device Manager** tab.

- 4 Click the plus (+) icon before the **Universal serial bus controller** item.
- 5 From the **Universal serial bus controller** item, select **Samsung Digital Presenter 950**, then click **Properties**.
- 6 The Samsung Digital Presenter 950 Properties dialog box opens. Click the **Driver** tab.
- 7 Click **Update Driver**. The Device Driver Update Wizard screen opens. Follow the on-screen instructions to complete the installation.

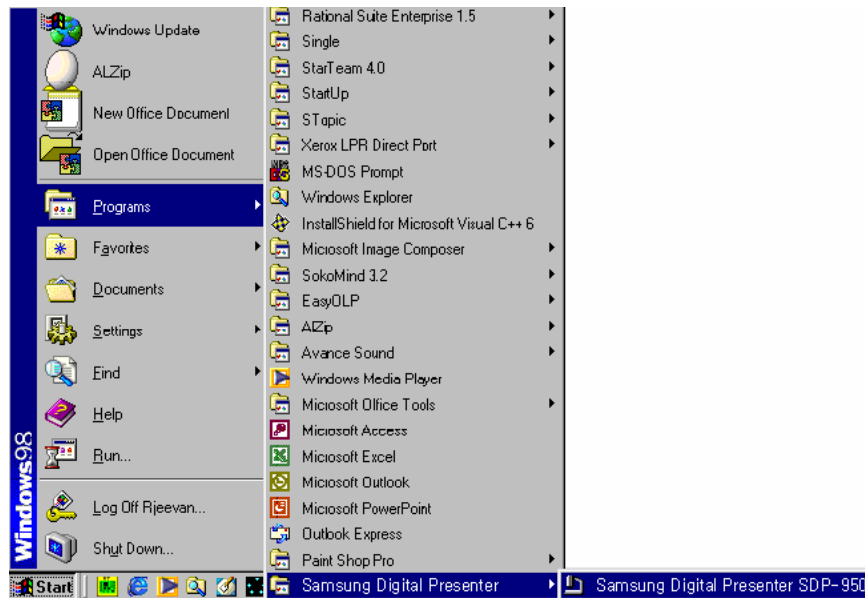


Running SDP-950 Program

- 1 Make sure that your SDP-950 Digital Presenter is connected to the PC and both are turned on.
- 2 Double-click the **Samsung Digital Presenter SDP-950** icon (automatically placed on the Windows desktop when you installed) to run.



- 3 You can also select **SDP950** under its program group of Start menu (**Start** ⇒ **Programs** ⇒ **SAMSUNG TECHWIN** ⇒ **Samsung Digital Presenter SDP-950**)



- 4 The SDP-950 View Panel and Main Panel opens. The image presented from the SDP-950 Digital Presenter will appear in the View Panel window.
For information on working with the SDP-950 View Panel and Main Panel, see page 14.



✓ Note

- SDP-950 program does not run if the Digital Presenter is not connected to the PC or not turned on.
- If the whole view of the SDP-950 View Panel does not appear, check if the graphic card on your PC supports 1024 x 768, 65536 colors or higher.

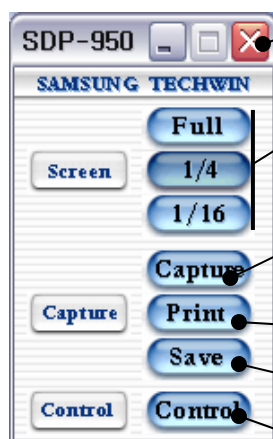
SDP-950 View Panel & Main Panel overview



View area

Image presented from the SDP-950 Digital Presenter appears in this view area.

If you adjust the image using the controls in the desktop SDP-950 Control Panel, you will see the applied result in this area.



Exits SDP-950 program

Allows you to select the screen size : Full, Half, Quarter

Captures the image currently displayed in the View Panel. When capturing is complete, the Capture button color turns orange. In this status, you can save or print the image.

Prints the captured image. For details, see page 22.

Saves the captured image with BMP, JPG format. For details, see page 20.

Opens or closes the Control Panel. For details, see page 15.

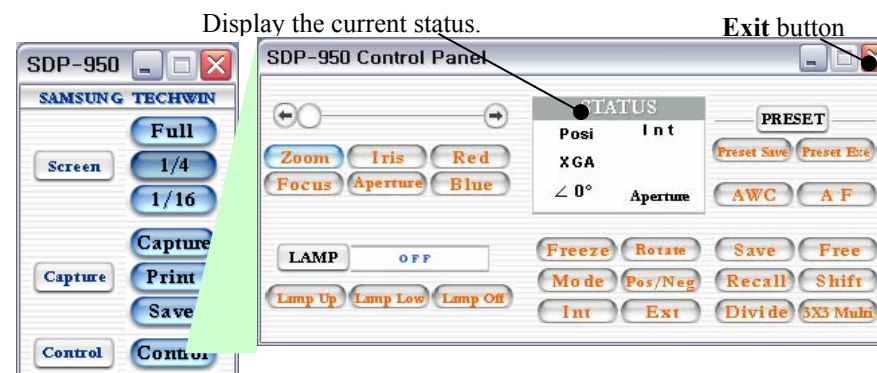
Working with SDP-950 Program

With the SDP-950 program, you can control and adjust the image presented from your SDP-950 Digital Presenter. You can also save it as a graphic file and print the image through the printer connected to the PC.

Using SDP-950 Control Panel

To adjust the image presented from the SDP-950 Digital Presenter, open the Control Panel on your computer desktop.

- 1 Run SDP-950 program. For details, see page 11.
- 2 From the Main Panel, click **Control**. For details on the control buttons in the desktop SDP-950 Control Panel, see the following page.
- 3 To close the on-screen Control Panel, click **Exit** button on the Control Panel. Or click **Control** in the Main Panel.



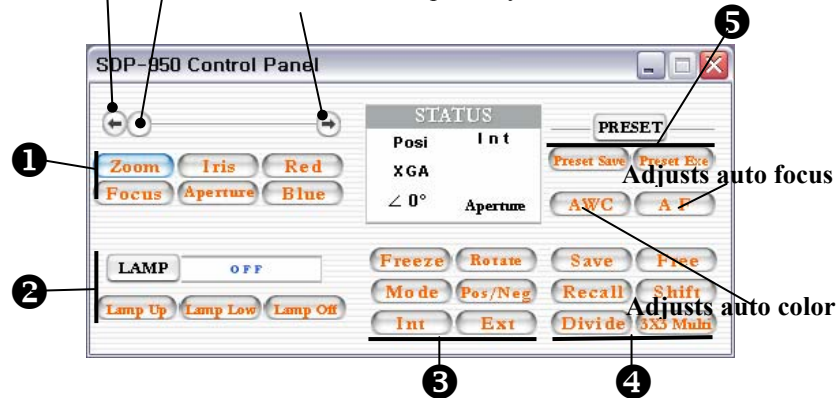
✓ **Note** : The button functions on this desktop SDP-950 Control Panel are equivalent to the buttons on the SDP-950 Digital Presenter and the SDP-950 remote control. For further details on the control buttons, refer to the User's Guide which came with the SDP-950.

SDP-950 Control Panel overview

Click this button repeatedly to reduce the value.

Click and drag this rectangle to the value you want.

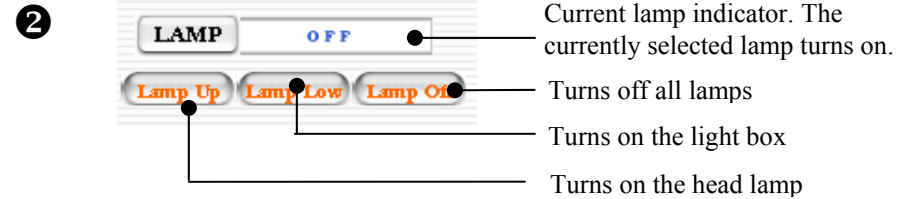
Click this button repeatedly to increase the value.



- 1 **Zoom** Enlarges or reduces the image size on the screen.
- Focus** Adjusts focus.
- Iris** Adjusts the brightness of the image on the screen.
- Red** Adjusts the red color.
- Blue** Adjusts the blue color.

✓ **Note** : To adjust the setting value, click the button you want to adjust, then click the arrow button or slide the rectangle at the left top of the Control Panel.

- Aperture** Controls the sharpness of the output image.



Turns the head lamp or the light box on/off.

- 3 **Freeze** Keeps the current image on the screen.
- Rotate** To rotate the image by 90° / 180° / 270° / Off (SDP-950DX Only)

- Mode** Chooses the graphic mode.
Mode dialog box appears



- Pos/Neg** Turns the image to positive or negative.
- Int** Chooses internal signal out from the SDP-950.

Ext Chooses external signal out from other devices.
External dialog box appears.



Save Saves the image into the memory of the SDP-950 Digital Presenter. (SDP-950DX Only)

Recall Recalls the image from the memory of the SDP-950 Digital Presenter. (SDP-950DX Only)

Shift Shifts the recalled image shown in the divided screen from right to left to see the hidden portion of the image. (SDP-950DX Only)

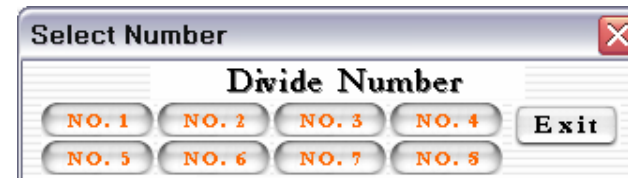
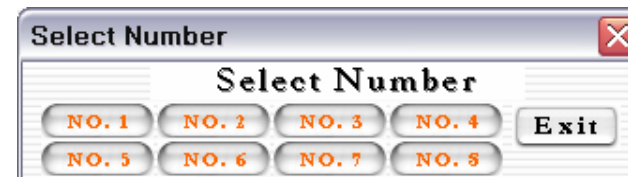
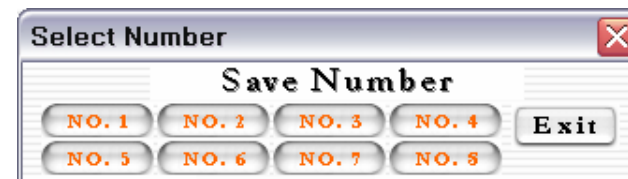
Divide Divides the screen to see both of the current image and The image recalled from the memory of SDP-950 Digital Presenter simultaneously on one screen. (SDP-950DX Only)

3X3 Multi Divides the screen (**3X3 Multi-Screen**) to see 9 images saved in the memory of the SDP-950 Digital Presenter. (SDP-950DX Only)

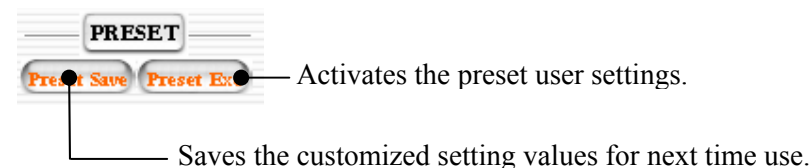
✓ **Note** : When the video source is EXT1,2 (NOSYNC1,2), Freeze on, or Recall on, the **Save** command is not available.

You can save up to 8 frames into the SDP-950 Digital Presenter's memory. If you select **Save**, **Recall**, **Divide** or **3X3 Multi-Screen** button, the Select Number dialog box appears. Select the memory location number.

Free Cancels Freeze, Divide, Recall, or Preset Exe mode and returns to the Standby mode.



5



✓ **Note** : You can save up to 4 different custom use settings. If you select **Save**, or **Execute** button, the Select Number dialog box appears. You select the memory location number.



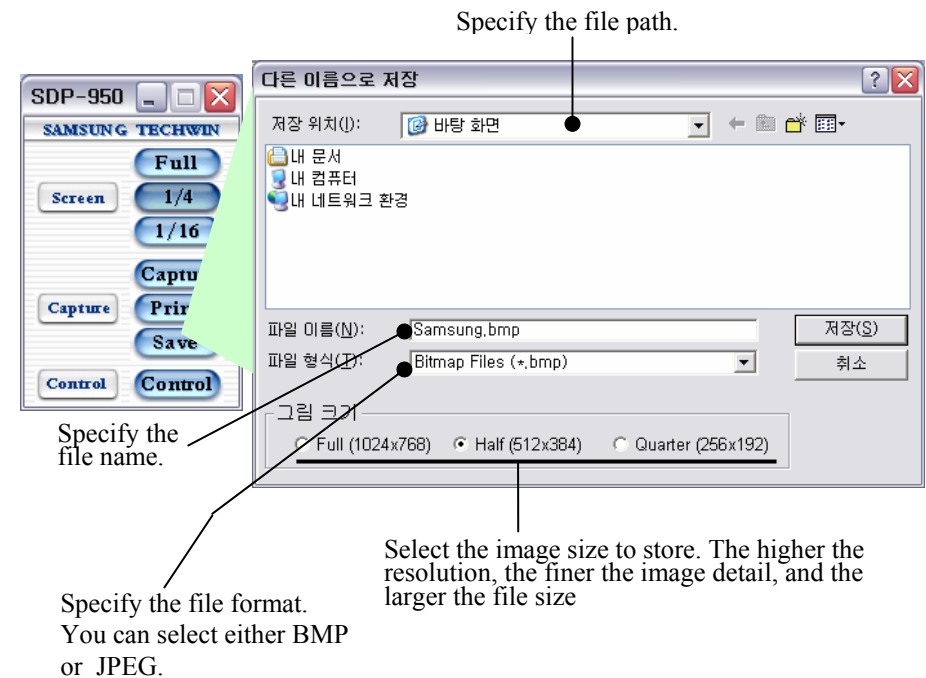
Saving the image into the computer HDD

You can save the image currently displayed in the View Panel as a BMP or JPEG format graphic file. Do as follows:

- 1 Run SDP-950 program. For details, see page 11.
- 2 The SDP-950 View Panel displays image currently presented from SDP-950 Digital Presenter. To adjust the image, open the on-screen SDP-950 Control Panel and adjust the image. For details, see page 16.
- 3 When the desired image is displayed in the View Panel, click **Capture** in the Main Panel. You see the capture process on the screen.
- 4 When capturing is complete, the Capture button color turns dark color.
- 5 Click **Save** in the Main Panel.
- 6 Specify the file name, file format, and file path. Then, click **Save** in the Save As dialog box. The image is saved as a selected file format.
- 7 When completed, you must click **Capture** in the Main Panel to release the capture mode. The Capture button color turns blue.

✓ **Note** : If you do not release the Capture mode after you saved or printed the image, the View Panel remains occupied with the captured image. To view another object presented from

SDP-950 Digital Presenter and view the result after you adjust controls, you must release the Capture mode.

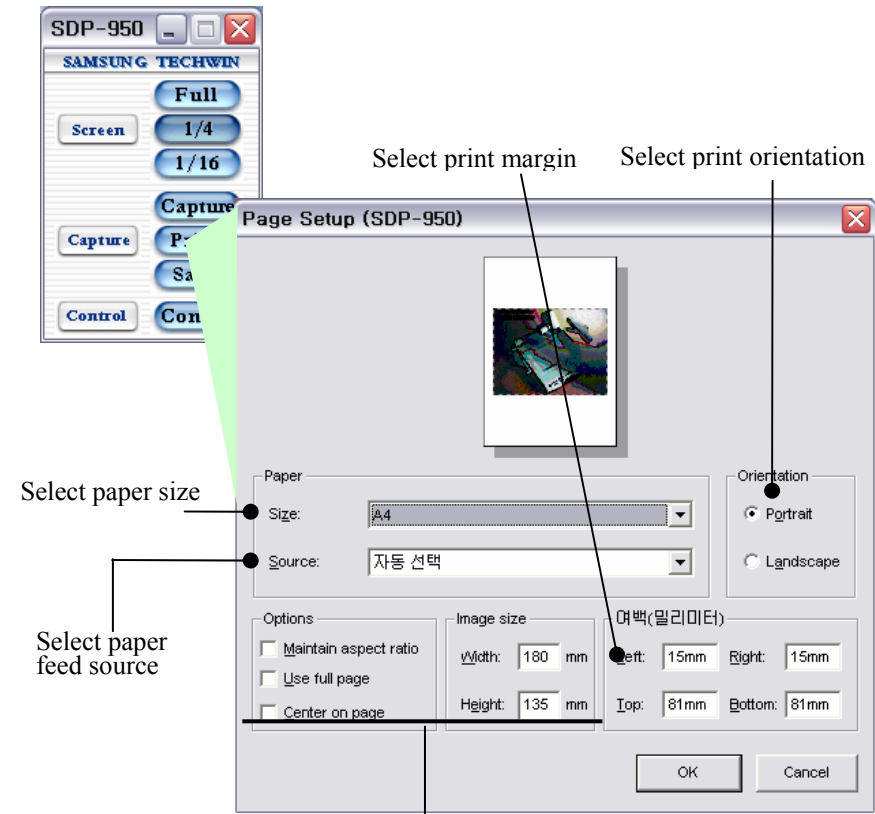


Printing the image

You can print the image currently displayed in the View Panel.
Do as follows:

- 1 Run SDP-950 program. For details, see page 11.
- 2 The View Panel displays image currently presented from SDP-950 Digital Presenter. To adjust the image, open the on-screen Control Panel and adjust the image.
For details, see page 16.
- 3 When the desired image is displayed in the View Panel, click **Capture** in the Main Panel. You see the capture process on the screen.
- 8 When capturing is complete, the Capture button color turns dark color.
- 4 Click **Print** in the Main Panel.

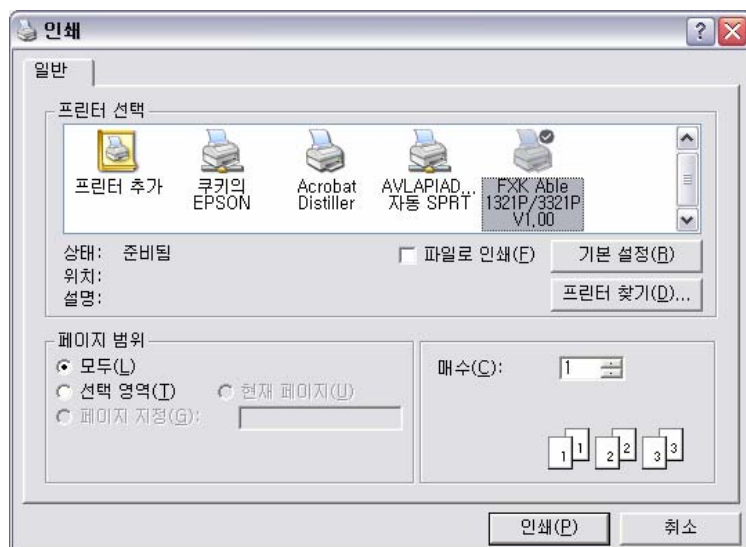
✓ **Note** : Paper size and paper source items vary depending on the printer you use.



Select print options and image size if necessary:

- **Maintain aspect ratio** : If you want to change the width value of image size while at the same time automatically adjusting the length value (or vice verse) so that their respective values are in proportion, select this option.
- **Use full page** : Select to print image to fit in the print page.
- **Center on page** : Select to print the image center on the print page. You cannot specify Margins.
- **Image size** : Specify the image size to print.

- 5 Click **OK**. The Print dialog box opens.



- ✓ **Note** : For further available print options, refer to your printer User's Guide.

- 6 Select print options and click **OK** to start printing.
- 7 After printing is complete, click **Capture** in the on-screen Main Panel to release the capture mode. If you do not release the capture mode, the View Panel remains occupied with the captured image.

Troubleshooting (Windows Program)

Symptom	Solution
SDP-950 program fails to run.	<p>There may be a communication problem between SDP-950 Digital Presenter and the computer. Exit SDP-950 program and do as follows:</p> <ul style="list-style-type: none"> • Unplug the USB cable, then plug it back in. • Close other unnecessary software programs that are running (especially programs related to USB communication). • If you turn the unit off, turn it back on after at least 10 seconds.
The following error message appeared : “Fail to find USB device driver. Check the USB plug or the power of SDP-950 set.”	<p>Your computer system could not find USB driver.</p> <ul style="list-style-type: none"> • Check the USB cable connection. • Make sure that SDP-950 Digital presenter turns on. • Check that USB driver is properly installed. For information on installing USB driver, see page 3.
The following error message appeared : “There is a problem in communication of USB. Please disconnect the plug of USB and reconnect it.”	<p>System error occurred and USB communication has failed. Do as follows:</p> <ul style="list-style-type: none"> • Unplug the USB cable, then plug it back in.

Symptom	Solution
The following error message appeared : “There is a trouble in USB communication. Currently the program is checking the system. Please wait a moment.”	USB communication error occurred. Exit SDP-950 program, then do as follows: • Unplug the USB cable, then plug it back in.
The following error message appeared : “Fail to allocate memory or resource. Please exit the program, and restart it.”	There are too many programs that are running. • Close other unnecessary programs. • Exit SDP-950 program, then run it again. • Restart your computer.
The following error message appeared : “Fail to transfer the image”	USB communication error occurred and an image transfer has failed. • Cancel the current task and wait a minute. Then start to save it again. • Unplug the USB cable, then plug it back in.
The following error message appeared : “Sorry, can’t save the OOO format. Only support bitmap or jpeg format.”	• You can save image as a BMP or JPEG file format only. For details, see page 20.

Symptom	Solution
The following error message appeared: “Library can’t operate correctly.”	<ul style="list-style-type: none"> • There is an error occurred in the Library which will be used to save an image. Cancel the current task and wait a minute. Then start your operation again. • If you still have same problem, uninstall the SDP-950 program, then reinstall the program. For details, see page 9.
The following error message appeared: “Windows API can’t operate correctly.”	• Windows printing error occurred. Check if no printing task is spooled. If any, wait until all printing tasks are done, then try your printing again.
The following error message appeared: “Fail to print the image.”	• Windows printing error occurred. Check if no printing task is spooled. If any, wait until all printing tasks are done, then try your printing again.
The following error message appeared: “Sorry. This command is not available in present settings.”	• The operation you activated has failed. If you want to do the command, you should change the settings. (e.g. video source set into INT, Freeze off, Recall off etc.)

- ◆ Before your power SDP-950 off, SDP-950 S/W should be turned off. (You may have a problem in OS)
- ◆ Unless You follow this sequence, you may have a problem in SDP-950.
1. Turn SDP-950 S/W off → 2. Power SDP-950 off → 3. Pull the plug off
- ◆ If SDP-950 S/W is not operated normally, reboot PC and turn SDP-950 on again.

Installing SDP-950 Software



The SDP-950 Viewer software lets you control your SDP-950 Digital Presenter on your Macintosh, save the images and print them.

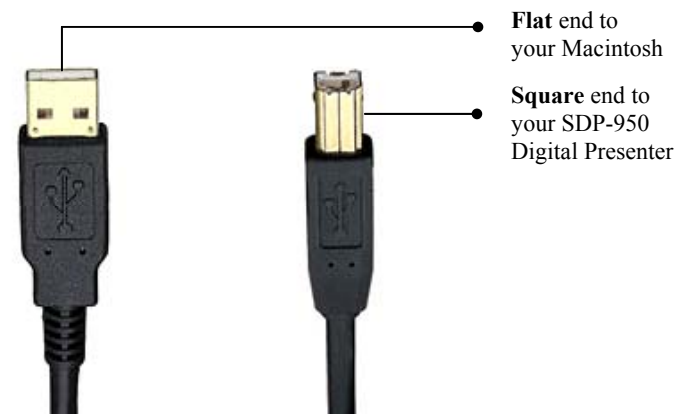
System requirements

To run SDP-950 Software, your computer must meet the following minimum requirements:

- **System Hardware:** Any Macintosh with PowerPC or G3/G4 processor and an USB port.
- **Operating System:** Mac OS 9.0 ~ 9.x
- **Software:** QuickTime 4.0 or later, USB Manager 1.2 or later installed.
- **Memory:** 8 MB of available RAM space for application.
- **Hard Disk:** 3 MB of available hard disk space for installing application and documents.
- **Drives:** CD-ROM drive to install software.
- **Display:** A monitor that can display 256 colors and a resolution of 800x600 or higher. A monitor that can display thousands or millions of colors and a resolution of 1024 X 768 or higher is recommended.

Connecting SDP-950 Digital Presenter With Your Macintosh

With the USB interface, you can connect or remove your digital presenter without having to shut down or restart your Macintosh.



1. Locate the USB cable that came with your Digital Presenter.
2. Connect the **square** end of the USB cable to the Digital Presenter's USB port.
3. Connect the **flat** end of the USB cable to your Macintosh's USB port or USB hub port.

If your SDP-950 Digital Presenter and computer are both powered on, you will see the message that your digital presenter driver needs to be installed. Continue with the instructions on the next chapter.

Installing Software

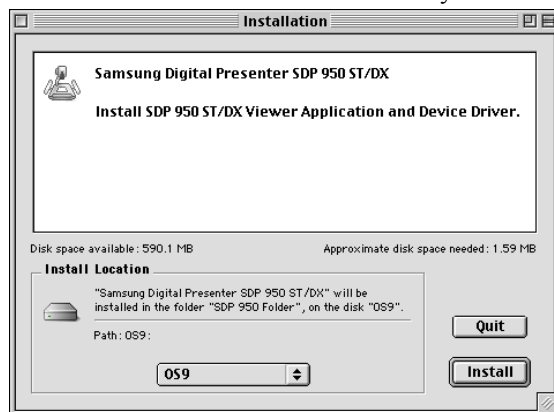
To install the SDP-950 Software, insert Software CD into the CD-ROM drive in your Macintosh. A window pops up automatically and shows the SDP-950 Installer icon. Double-click the icon to launch the installer.



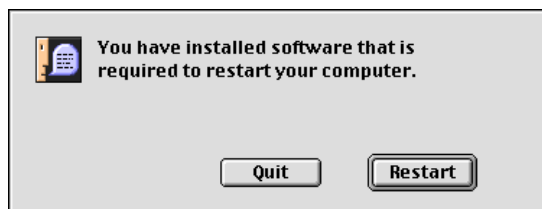
You see startup screen of the software installer. Click **OK** to continue.



Choose a location to install SDP-950 software in your Macintosh, and click **Install**.



Your Macintosh needs to restart when the installation is finished.



Using the SDP-950 Software

Launching the Software

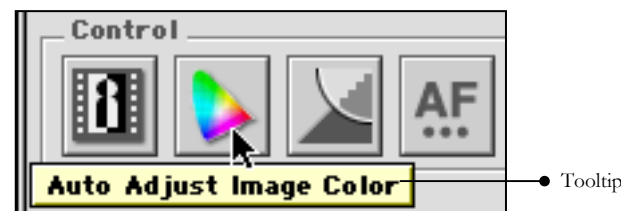
Make sure that the SDP-950 Digital Presenter is connected to your Macintosh and both are turned on. Locate the **SDP-950 Viewer** software where you have installed them and double-click the icon to launch.



The **SDP-950 Viewer** and **Control** window opens. The image presented from the SDP-950 Digital Presenter will appear in the Viewer window.

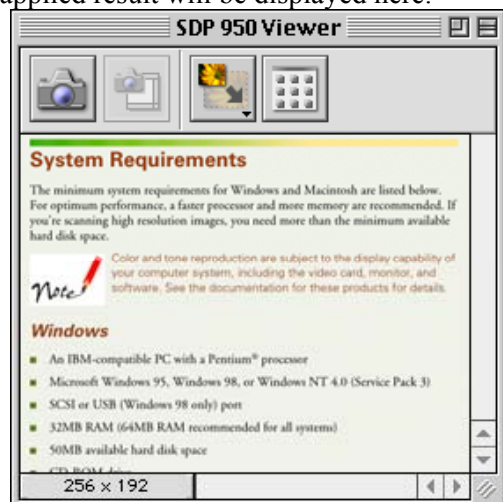
Looking at the Interface

The interface of SDP-950 software is pretty straight forwarded. And it also has '**Tooltip**' feature, so you can see what a button does by just holding your mouse over it.



SDP-950 Viewer window

Image presented from the SDP-950 Digital Presenter appears in this window. If you adjust the image using the **Control** window or the hardware control panel, the applied result will be displayed here.



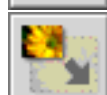
Capture

Capture the current image.



Show Captured Image

Show **Captured Image** window.



Screen Size

Set **Viewer** window size from three different sizes: *Full, Half, and Quarter.*

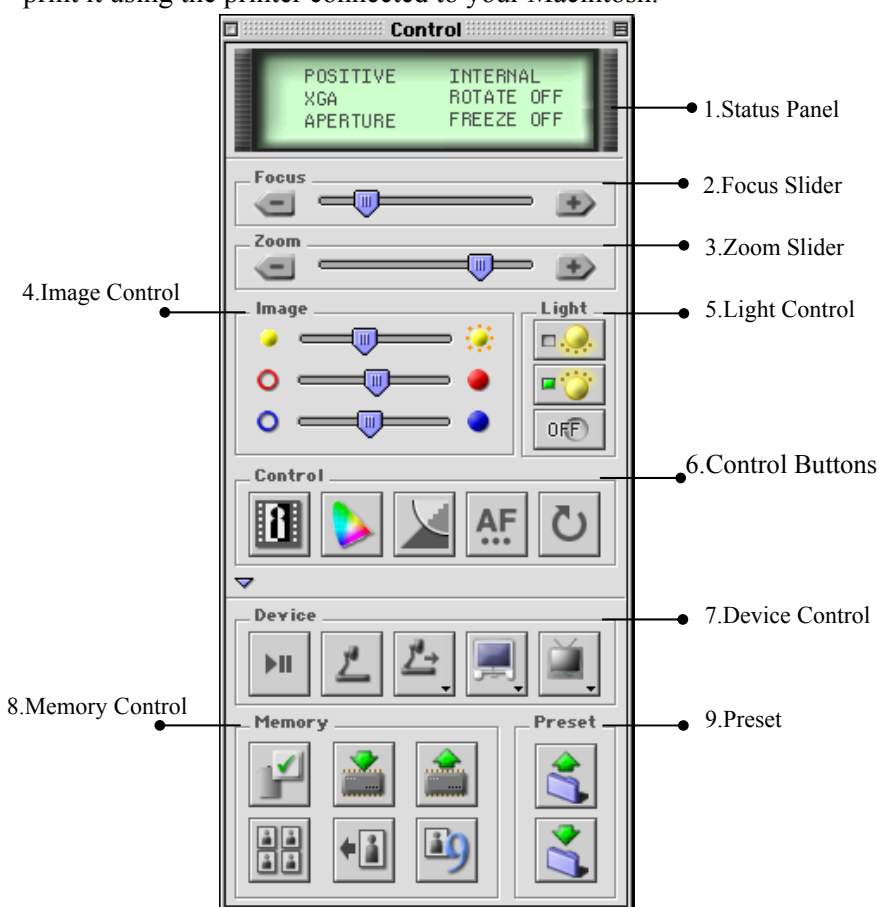


Show Control Window

Show or hide **Control** window.

Control window : Overview

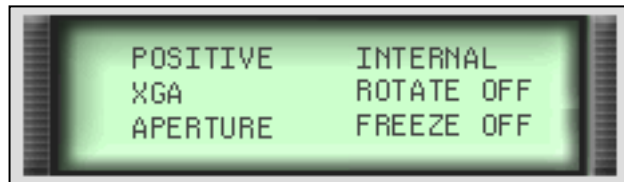
With the Control window, you can control and adjust the image presented from your SDP-950 Digital Presenter. You can also save it as a file and print it using the printer connected to your Macintosh.



The Control window of SDP-950 DX model

Controls

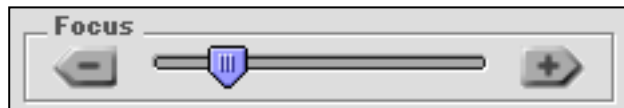
1. Status Panel



Display current status listed below:

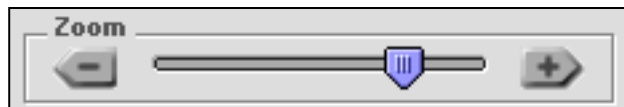
- **Invert:** Positive / Negative
- **Mode:** XGA / SVGA
- **Aperture:** On / Off
- **Output:** Internal / External
- **Rotate:** Off / 90° / 180° / 270°
- **Freeze:** On / Off

2. Focus Slider



Click and drag the slider button to manually control the camera's focus.

3. Zoom Slider



Click and drag the slider button to control the camera's zoom.

4. Image Sliders



Click and drag the slider button to manually control the image's characteristics listed below:

- **Iris:** Make image Darker or Lighter
- **Red:** Control the Red color of the image
- **Blue:** Control the Blue color of the image

5. Light Control



Turn on or off the lights of SDP-950 Digital Presenter. Small green light indicates the light is turned on.

- **Lamp Up:** Turn on the headlamps.
- **Lamp Low:** Turn on the light box
- **Lamp off:** Turn off all the lights.

6. Control Buttons



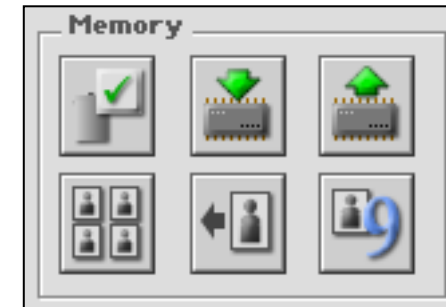
- **Invert image:** Make image Positive or Negative.
- **AWC:** Click to correct the image's color automatically.
- **Aperture:** Click to sharpen the image.
- **Auto focus:** Click to set the focus automatically.
- **Rotate:** Click to rotate the image. (SDP-950DX Only)

7. Device Control

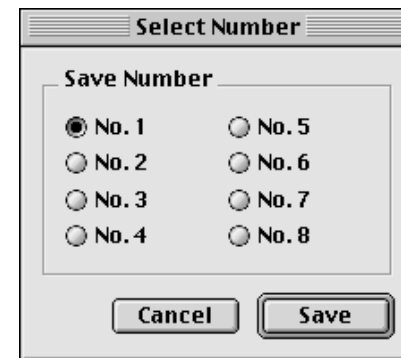


- **Freeze:** Click to keep the current image on the screen. Click again to see the live image.
- **Choose Internal Output** from SDP-950.
- **Choose External Output** from other devices.
- **Mode:** XGA(1024X768) / SVGA(800X600)
- **Select Output Mode:** NTSC / PAL

8. Memory Control (SDP-950DX Only)



- **Free:** Click to reset all the settings to default like *Freeze*, *Rotate*, and *Divide*.
- **Save to Memory:** Save current image to memory.
- **Recall from Memory:** Load saved image from memory.
- **Divide:** Divide screen to halves. Live image is being displayed on the left-hand side, and the saved image is being displayed on the right-hand side.
- **Shift:** Move the saved image on the right-hand side to the left.
- **3X3 Multi:** Divide screen to 3 by 3 to display all 8 images saved to memory simultaneously.

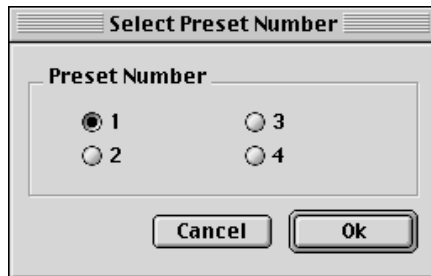


You can save up to 8 frames into the SDP-950 Digital Presenter's internal memory. When you click **Save**, **Load**, or **Divide** buttons, the **Select Number** dialog box appears, and lets you select the memory location number.

9. Preset



- **Preset Exe:** Load and activate saved settings.
- **Preset Save:** Save current settings for next time use.

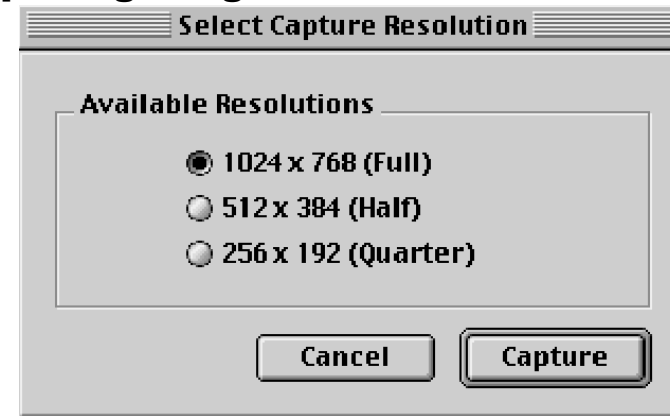


You can save up to four different custom presets. When you click the **Save** or **Load** button, the **Select Number** dialog box appears. Select appropriate preset number.

Capture and Print Image

You can capture the image presented from the SDP-950 Digital Presenter, and save the image as a JPEG or PICT file, or print the image.

Capturing Image



You can select the image size from three different sizes: Full, Half, and Quarter.

Select the size of the image being captured, then press Capture. The Captured Image window appears, and there are two buttons on the window.



Save Image

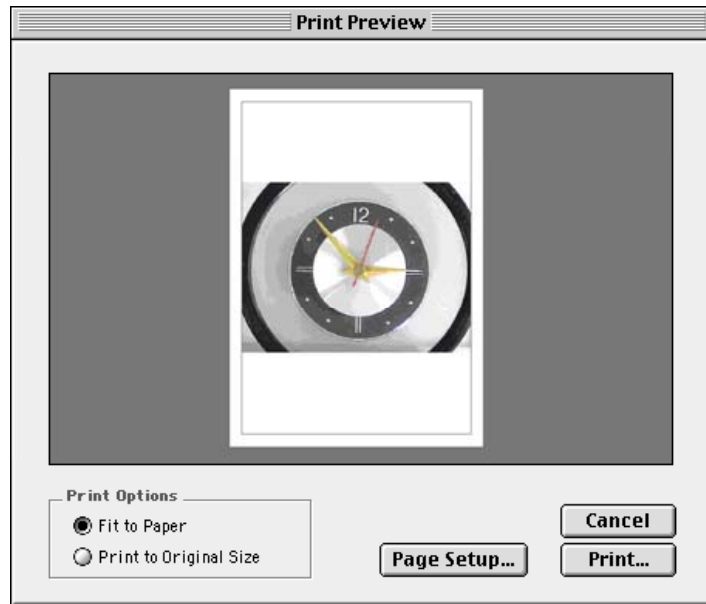
Save the captured image on your hard disk drive.



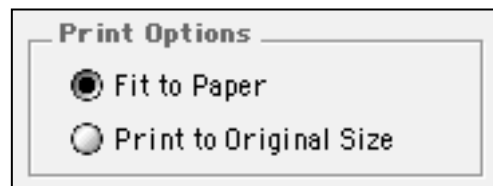
Print Image

Print the captured image with your default printer.

Printing Image



If you press the Print Image button on the Captured Image window, the Print Preview dialog box appears. Here, you can set the image size on the paper.



- Fit to Paper: Enlarge or reduce the image size to fit the size of the paper.
- Print to Original Size: Don't change the image size. If the size of the image is

larger than the paper's, it will be reduced to fit in the paper.

Once you set the image size, click Print to print the image.

Troubleshooting (Windows Program)

Symptom	Solution
Device Not Found	Either USB connection is broken or SDP-950 Digital Presenter is turned off. Please checkup the USB cable connection or turn on the Digital Presenter.
Device Disconnected	This is not an error. If you disconnect the USB cable or turn off the Digital Presenter while the software is running, this message will be displayed and the software will be quit.
File I/O Error	The image file you want to replace is locked or it has invalid name. Please give it a different name and try again.
Cannot Initialize Printer	There is no default printer selected. Please Select a printer on Chooser and try again. You Can find Chooser on the Apple Menu.
QuickTime Not Found or Version Invalid	You don't have QuickTime on your Macintosh or the version is too low. Please install QuickTime 4.0 or later and try again. You can download QuickTime software from Apple Computer's web site.
Mac OS Version Invalid	This software runs on Mac OS version 9.0 or later. Please upgrade your Mac OS to use this software.
USB Software Version Invalid	This software needs USB Software version 1.1 or later. You can download USB Software from Apple Computer's web site.
USB Software Not Found	This software needs USB Software version 1.1 or later. You can download USB Software from Apple Computer's web site.

◆ If SDP-950 S/W is not operated normally, reboot PC and turn SDP-950 on again.



SDP-950 Software User's Guide



Touchboards

205 Westwood Ave, Long Branch, NJ 07740

Phone: 866-94 BOARDS (26273) / (732)-222-1511

Fax: (732)-222-7088 | E-mail: sales@touchboards.com

www.SamsungPresenter.com

P/No: 6806-0375-01A

