

SAMSUNG

TECHWIN

SVP-5500 Software User's Guide

Touchboards

205 Westwood Ave, Long Branch, NJ 07740

Phone: 866-94 BOARDS (26273) / (732)-222-1511

Fax: (732)-222-7088 | E-mail: sales@touchboards.com



Contents

Installing SVP-5500 Software	2
System requirements	2
Installing software	2
Connecting SVP-5500 Video presenter to PC	3
Installing USB driver	3
Installing SVP-5500 program	5
Installation tips	6
How can I determine if my computer's USB port is enabled?	6
How do I remove the USB driver and SVP-5500 program?	7
Can I update the USB driver for SVP-5500 Video presenter?	9
Running SVP-5500 Program	10
SVP-5500 View Panel and Main Panel overview	12
Working with SVP-5500 Program	13
Using SVP-5500 Control panel	13
SVP-5500 Control panel overview	14
Saving the image into the computer HDD	16
Printing the image	18
Troubleshooting	20

Installing SVP-5500 Software

The supplied SVP-5500 program diskette contains:

- USB driver
- SVP-5500 program

To control your SVP-5500 Video presenter on the PC, save the images into the computer HDD, or print the images, you must connect SVP-5500 Video presenter to the PC through USB interface, then install the USB driver and SVP-5500 program using the supplied program diskette. Follow the procedure below.

System requirements

To install the SVP-5500 software, your computer must have at least the following system configuration:

- IBM or IBM compatible computer with a Pentium or higher processor
- Windows 98 or later
- Display: SVGA 800 x 600, 65536 colors or higher
- USB interface connector
- 16MB or higher RAM
- 3.5" floppy drive

Installing software

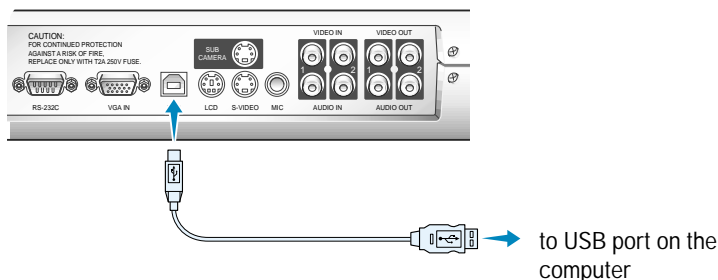
To install the software:

1. Connect your Video presenter to the PC with USB cable. See the opposite page.
2. Install the USB driver. See page 3.
3. Install the SVP-5500 control program. See page 5.

Follow the instructions below to complete the installation:

Connecting SVP-5500 Video presenter to PC

1. Make sure that both the SVP-5500 Video presenter and computer are turned ON.
2. Plug one end of the USB cable into the USB port on the Video presenter.
3. Plug the other end into the USB port on the computer.



✓ **Note:** For information connecting on other AV device, refer to the User's Guide which came with SVP-5500 Video presenter.

Installing USB driver

4. The Add New Hardware Wizard dialog box appears. Click **Next**.



5. Put a checkmark on the **Search for the best driver for your device** box and click **Next**.



6. Insert the SVP-5500 software diskette into your floppy disk drive, then put a checkmark on the **Floppy disk drives** box and **Specify a location** box then type **x:** (where **x** is the drive letter for the 3.5" floppy drive).



7. Click **Next**. The USB driver will be installed.



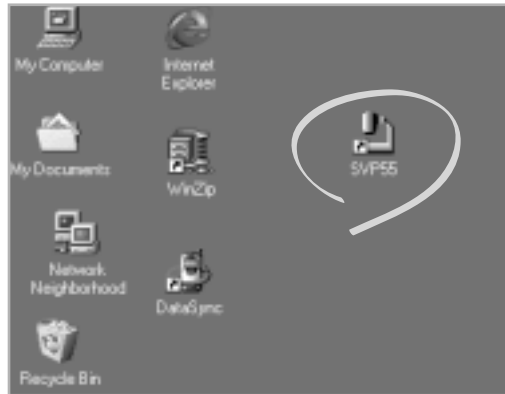
8. Follow the instructions on the screen to complete the installation.

Installing SVP-5500 program

9. From the **Start** menu, select **Run**, and type **x:setup** where **x** is the letter of your floppy disk drive, and click **OK**.
10. The Welcome window opens. Click **Next**.



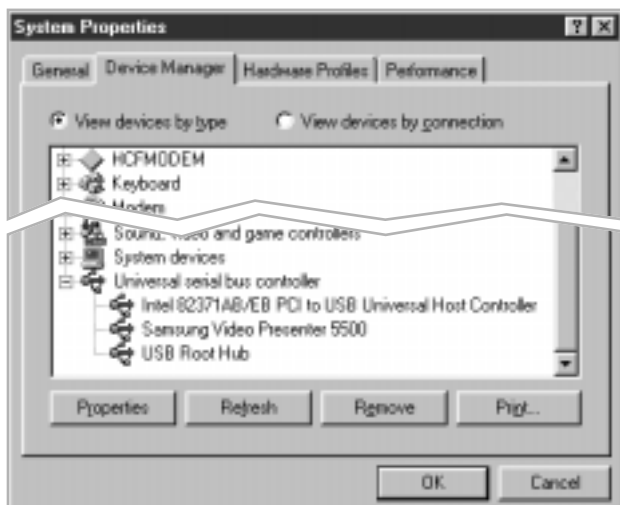
11. Follow the instructions on the screen to complete the installation. Restart your computer after the installation is complete.
12. After the SVP-5500 software is properly installed, you see the **SVP55** icon created on the Windows desktop.



Installation tips

How can I determine if my computer's USB port is enabled?

1. In Windows 98, select **Start → Settings → Control Panel**.
2. Double-click the **System** icon.
3. Click the **Device Manager** tab.
4. Click the plus (+) icon before the **Universal serial bus controller** item.



5. If you see a USB host controller and a USB root hub listed, USB is properly enabled. If you have multiple hubs on the USB chain, try connecting your Video presenter to a different hub or to another USB device. Also, make sure the cable connections are firm. (USB hubs are hardware devices into which you can plug multiple USB cables.)

If you do not see these devices listed, refer to your computer's documentation or contact the manufacturer for more information on enabling and setting up USB.

How do I remove the USB driver and SVP-5500 program?

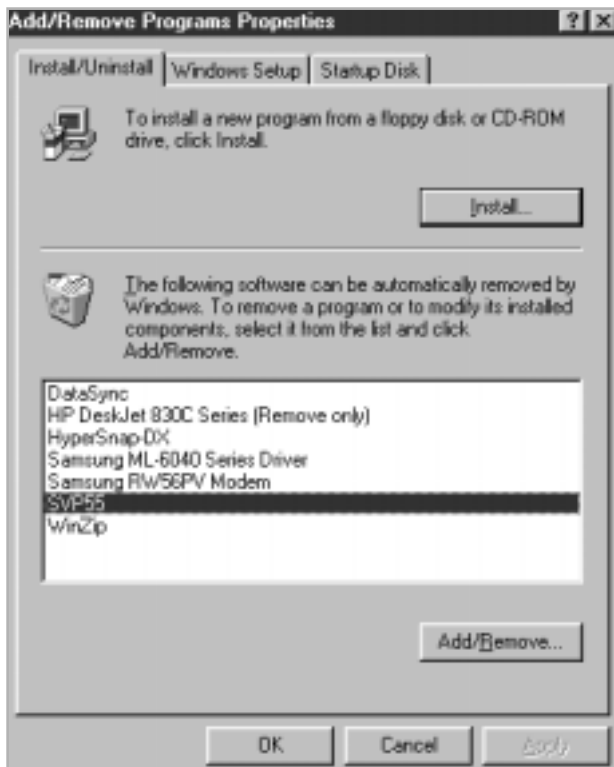
USB Driver:

1. In Windows 98, select **Start** → **Settings** → **Control Panel**.
2. Double-click the **System** icon.
3. Click the **Device Manager** tab.

4. Click the plus (+) icon before the **Universal serial bus controller** item.
5. From the **Universal serial bus controller** item, select **Samsung Video Presenter 5500**, then click **Remove**.
6. In the Confirm Device Removal dialog box, click **OK**.

SVP-5500 program:

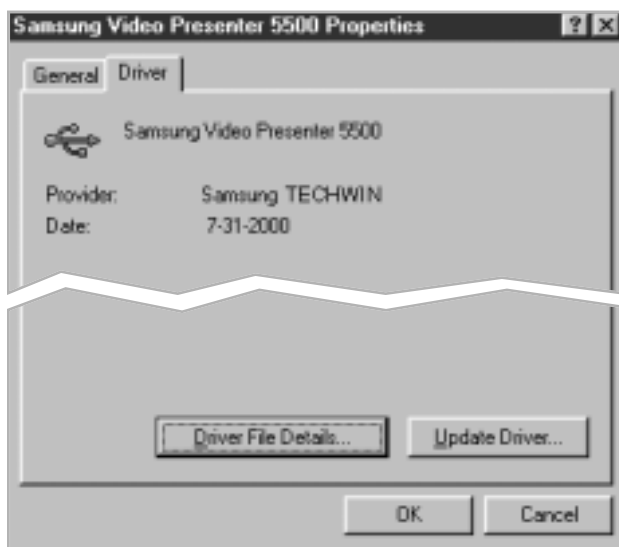
1. Select **Start** → **Settings** → **Control Panel**.
2. Double-click the **Add/Remove Programs** icon.
3. From the Programs list, click **SVP55**, then click **Add/Remove**.



Can I update the USB driver for SVP-5500 Video presenter?

Yes. You can update the USB driver file for the Video presenter if you have updated driver file. Do as follows:

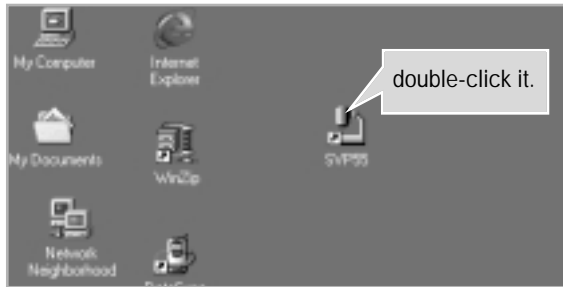
1. In Windows 98, select **Start** → **Settings** → **Control Panel**.
2. Double-click the **System** icon.
3. Click the **Device Manager** tab.
4. Click the plus (+) icon before the **Universal serial bus controller** item.
5. From the **Universal serial bus controller** item, select **Samsung Video Presenter 5500**, then click **Properties**.
6. The Samsung Video Presenter 5500 Properties dialog box opens. Click the **Driver** tab.



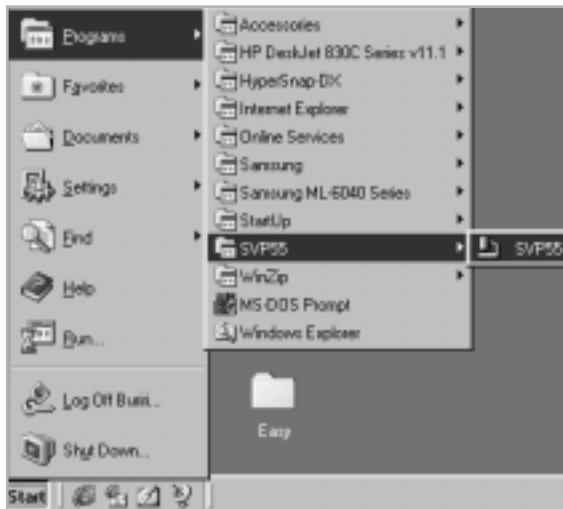
7. Click **Update Driver**. The Device Driver Update Wizard screen opens. Follow the on-screen instructions to complete the installation.

Running SVP-5500 Program

1. Make sure that your Video presenter is connected to the PC and both are turned on.
2. Double-click the **SVP55** icon (automatically placed on the Windows desktop when you installed) to run.

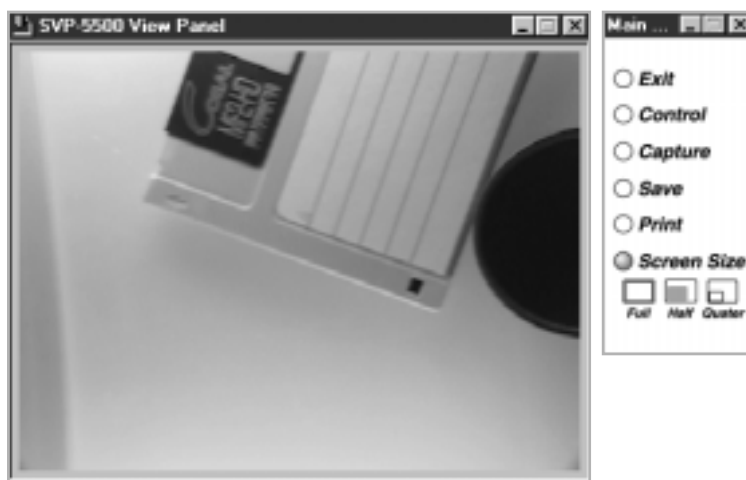


You can also select **SVP55** under its program group of Start menu (**Start** → **Programs** → **SVP55** → **SVP55**).



3. The SVP-5500 View Panel and Main Panel opens. The image presented from the SVP-5500 Video presenter will appear in the View Panel window.

For information on working with the SVP-5500 View Panel and Main Panel, see page 12.



✓ Notes:

- SVP-5500 program does not run if the Video presenter is not connected to the PC or not turned on.
- If the whole view of the SVP-5500 View Panel does not appear, check if the graphic card on your PC supports 800 x 600 or higher. To use this program, you must use Super VGA 800 x 600, 65536 colors or higher.

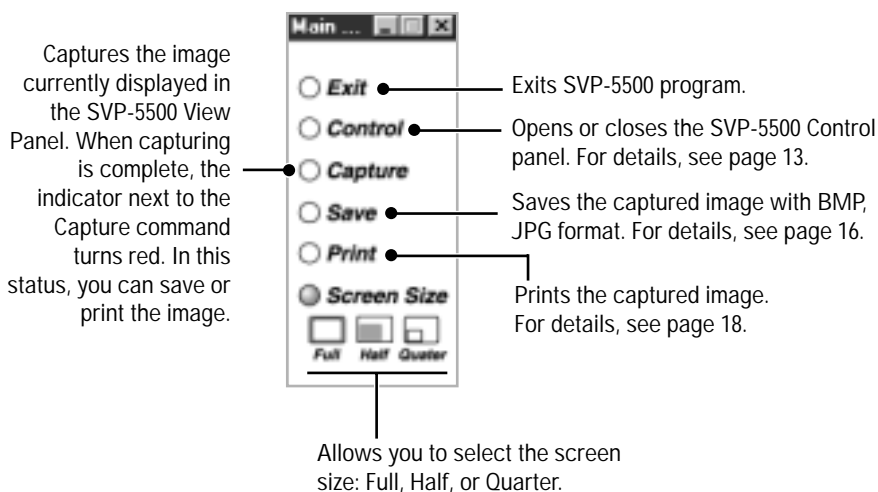
SVP-5500 View Panel and Main Panel overview



View area.

Image presented from the SVP-5500 Video presenter appears in this view area.

If you adjust the image using the controls in the desktop SVP-5500 Control panel, you will see the applied result in this area.



Captures the image currently displayed in the SVP-5500 View Panel. When capturing is complete, the indicator next to the Capture command turns red. In this status, you can save or print the image.

Exits SVP-5500 program.

Opens or closes the SVP-5500 Control panel. For details, see page 13.

Saves the captured image with BMP, JPG format. For details, see page 16.

Prints the captured image. For details, see page 18.


Allows you to select the screen size: Full, Half, or Quarter.

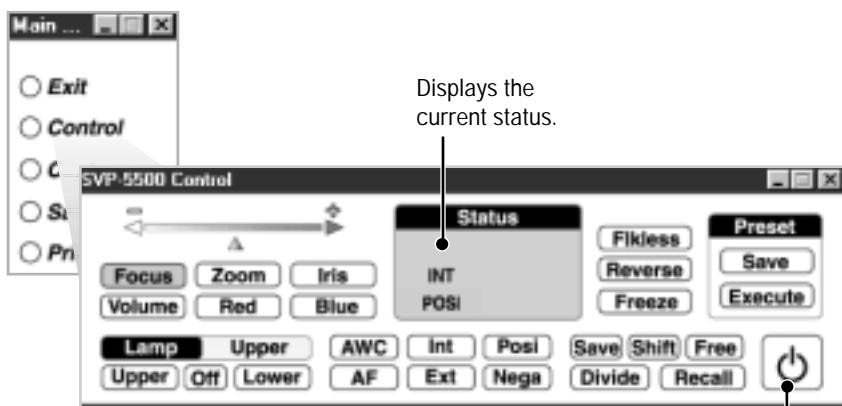
Working with SVP-5500 Program

With the SVP-5500 program, you can control and adjust the image presented from your SVP-5500 Video presenter. You can also save it as a graphic file and print the image through the printer connected to the PC.

Using SVP-5500 Control panel

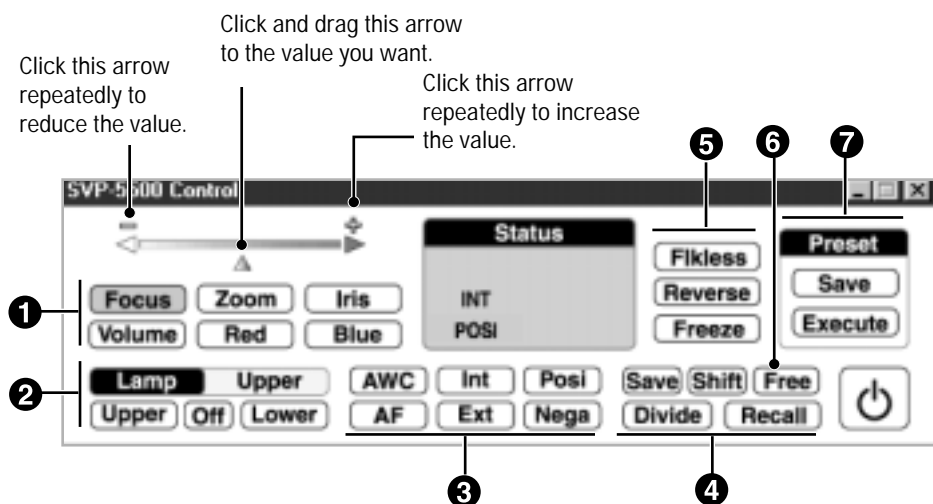
To adjust the image presented from the SVP-5500 Video presenter, open the Control panel on your computer desktop.

1. Run SVP-5500 program. For details, see page 10.
2. From the Main Panel, click **Control**. For details on the control buttons in the desktop SVP-5500 Control panel, see the following page.
3. To close the on-screen Control panel, click  on the Control panel. Or, click **Control** in the Main Panel.



Note: The button functions on this desktop SVP-5500 Control panel are equivalent to the buttons on the SVP-5500 Video presenter and the SVP-5500 remote control. For further details on the control buttons, refer to the User's Guide which came with the SVP-5500 Video presenter.

SVP-5500 Control panel overview



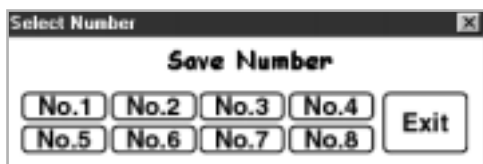
- 1 **Focus** → Adjusts focus.
- Zoom** → Enlarges or reduces the image size on the screen.
- Iris** → Adjusts the brightness of the image on the screen.
- Volume** → Adjusts the audio volume.
- Red** → Adjusts the red color.
- Blue** → Adjusts the blue color.

To adjust the setting value, click the button you want to adjust, then slide the scroll bar at the left top of the SVP-5500 Control panel to the value you want.

- 2 **Lamp** → Current lamp indicator. The currently selected lamp turns on.
- Upper** → Turns the head lamps and/or light box on or off.
- Off** → Turns off all lamps.
- Lower** → Turns the light box.

- 3
- AWC** → Adjusts the image color automatically.
 - AF** → Adjusts to focus automatically.
 - Int** → Allows to choose the signal input to be displayed.
 - Ext**
 - **INT** : Internal signal out from the SVP-5500 Video presenter.
 - **EXT** : External signal out from AV device (If connected to the SVP-5500 Video presenter)
 - Posi** → Turns image to positive.
 - Nega** → Turns image to negative.
- 4
- Save** → Saves the image into the memory of the SVP-5500 Video presenter.
 - Recall** → Recalls the image from the memory of the SVP-5500 Video presenter.
 - Divide** → Divides the screen to see both of the current image and the image recalled from the memory of SVP-5500 Video presenter simultaneously on one screen.
 - Shift** → Shifts the recalled image shown in the divided screen from the left to right to see the hidden portion of the image.

*You can save up to 8 frames into the SVP-5500 Video presenter's memory. If you select **Save**, **Recall**, or **Divide** button, the Select Number dialog box appears. Select the memory location number, click **Exit**.*

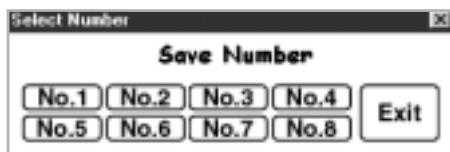


- 5 **Flickless** → Reduces the flicker on the screen.
Reverse → Puts the image on the screen into reverse.
 It rotates the image by 180°.
Freeze → Keeps the current image on the screen.

*Click the button to activate the corresponding actions.
 To cancel the action, click the button again.*

- 6 **Free** → Cancels Reverse, Freeze, Divide, or Recall mode and returns to the Standby mode.
- 7 **Preset** Saves the customized setting values
Save → for next time use.
Execute → Activates the preset user settings.

*You can save up to 8 different custom user settings. If you select **Save** or **Execute** button, the Select Number dialog box appears. After you select the memory location number, click **Exit**.*

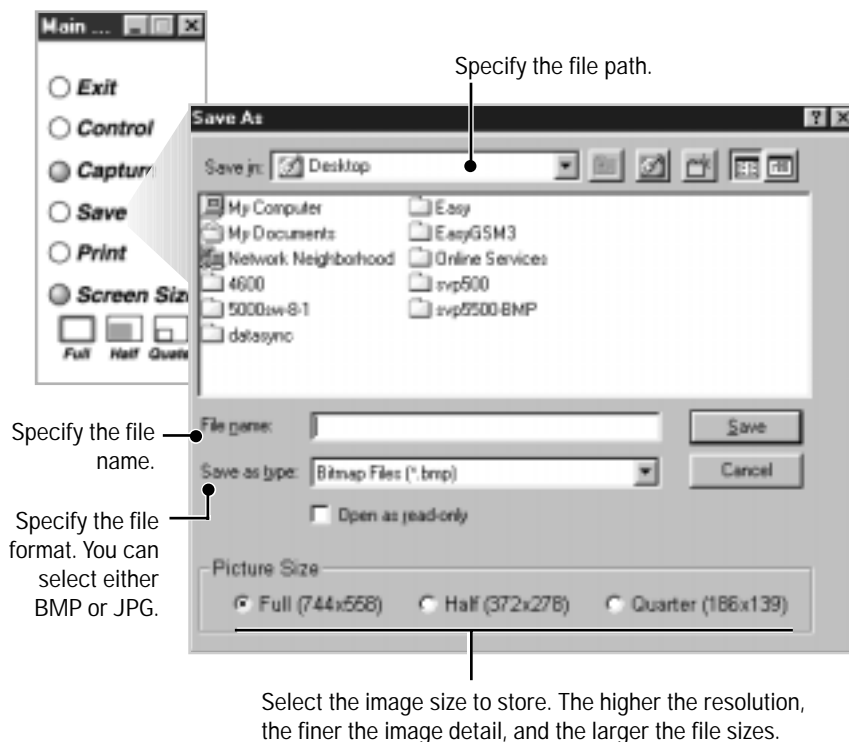


Saving the image into the computer HDD

You can save the image currently displayed in the SVP-5500 View Panel as a BMP or JPG format graphic file. Do as follows:

1. Run SVP-5500 program. For details, see page 10.
2. The SVP-5500 View Panel displays image currently presented from SVP-5500 Video presenter. To adjust the image, open the on-screen SVP-5500 Control panel and adjust the image. For details, see page 13.
3. When the desired image is displayed in the SVP-5500 View Panel, click **Capture** in the Main Panel. You see the capture process on the screen.

4. When capturing is complete, the lamp next to the Capture command in the Main Panel turns red.
5. Click **Save** in the Main Panel.



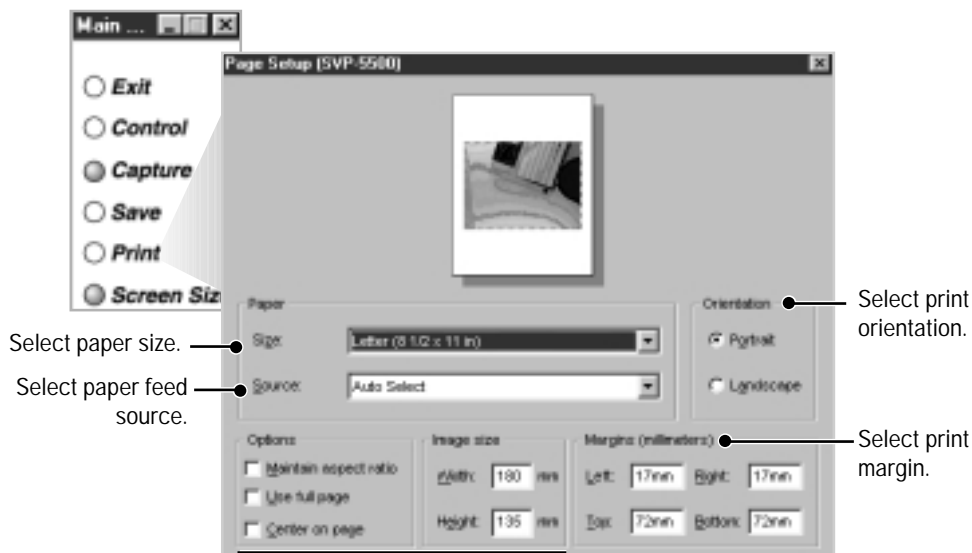
6. Specify the file name, file format, and file path. Then, click **Save** in the Save As dialog box. The image is saved as a selected file format.
7. When completed, you must click **Capture** in the Main Panel to release the capture mode. The lamp next to the Capture command in the Main Panel turns off.

✓ **Note:** If you do not release the Capture mode after you saving or printing image, the SVP-5500 View Panel remains occupied with the captured image. To view another object presented from SVP-5500 Video presenter and view the result after you adjust controls, you must release the Capture mode.

Printing the image

You can print the image currently displayed in the SVP-5500 View Panel. Do as follows:

1. Run SVP-5500 program. For details, see page 10.
2. The SVP-5500 View Panel displays image currently presented from SVP-5500 Video presenter. To adjust the image, open the on-screen SVP-5500 Control panel and adjust the image. For details, see page 13.
3. When the desired image is displayed in the SVP-5500 View Panel, click **Capture** in the Main Panel. You see the capture process on the screen.
4. When capturing is complete, the lamp next to the Capture command in the Main Panel turns red.
5. Click **Print** in the Main Panel.

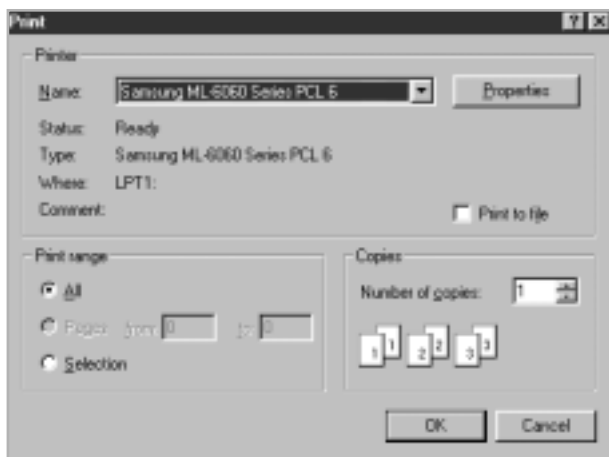


Select print options and image size if necessary:

- Maintain aspect ratio : If you want to change the width value of image size while at the same time automatically adjusting the length value (or vice versa) so that their respective values are in proportion, select this option.
- Use full page : Select to print image to fit in the print page.
- Center on page : Select to print the image center on the print page. You cannot specify Margins.
- Image size : Specify the image size to print.

- ✓ **Note:** Paper size and paper source items vary depending on the printer you use.

6. Click **OK**. The Print dialog box opens.



- ✓ **Note:** For further available print options, refer to your printer User's Guide.

7. Select print options and click **OK** to start printing.
8. After printing is complete, click **Capture** in the on-screen Main Panel to release the capture mode. If you do not release the capture mode, the SVP-5500 View Panel remains occupied with the captured image.

Troubleshooting

Symptom	Solution
SVP-5500 program fails to run.	<p>There may be a communication problem between SVP-5500 Video presenter and the computer. Exit SVP-5500 program and do as follows:</p> <ul style="list-style-type: none">• Unplug the USB cable, then plug it back in.• Close other unnecessary software programs that are running (especially programs related to USB communication).• If you turn the unit off, turn it back on after at least 10 seconds.
The following error message appeared: "Fail to find USB device driver. Check the USB plug or the power of SVP-5500 set."	<p>Your computer system could not find USB driver.</p> <ul style="list-style-type: none">• Check the USB cable connection.• Make sure that SVP-5500 Video presenter turns on.• Check that USB driver is properly installed. For information on installing USB driver, see page 3.• If you turn the unit off, turn it back on after at least 10 seconds.
The following error message appeared: "There is a problem in communication of USB. Please disconnect the plug of USB and reconnect it."	<p>System error occurred and USB communication has failed. Do as follows:</p> <ul style="list-style-type: none">• Unplug the USB cable, then plug it back in.

Symptom	Solution
The following error message appeared: "There is a trouble in USB communication. Currently the program is checking the system. Please wait a moment."	<p>USB communication error occurred. Exit SVP-5500 program, then do as follows:</p> <ul style="list-style-type: none"> • Unplug the USB cable, then plug it back in.
The following error message appeared: "Fail to allocate memory or resource. Please exit the program, and restart it."	<p>There are too many programs that are running.</p> <ul style="list-style-type: none"> • Close other unnecessary programs. • Exit SVP-5500 program, then run it again. • Restart your computer.
The following error message appeared: "Fail to transfer the image."	<p>USB communication error occurred and an image transfer has failed.</p> <ul style="list-style-type: none"> • Cancel the current task and wait several minutes. Then start to save it again. • Unplug the USB cable then plug it back it.
The following error message appeared: "Sorry, can't save OOO the format. Only support bitmap or jpeg format."	<ul style="list-style-type: none"> • You can save image as a BMP or JPEG file format only. For details, see page 17.

Symptom	Solution
The following error message appeared: "Library can't operate correctly."	<ul style="list-style-type: none"> • There is an error occurred in the Library which will be used to save an image. Cancel the current task and wait several minutes. Then start your operation again. • If you still have same problem, uninstall the SVP-5500 program, then reinstall the program. For details, see page 8.
The following error message appeared: "Windows API can't operate correctly."	<ul style="list-style-type: none"> • Windows printing error occurred. Check if no printing task is spooled. If any, wait until all printing tasks are done, then try your printing again.
The following error message appeared: "Fail to print the image."	<ul style="list-style-type: none"> • Windows printing error occurred. Check if no printing task is spooled. If any, wait until all printing tasks are done, then try your printing again.
The following error message appeared: "Sorry to fail. Try it again, please."	<ul style="list-style-type: none"> • The operation you activated has failed. Wait several minutes. Then start to operate it again.



SAMSUNG OPTO-ELECTRONICS AMERICA, INC.

40 Seaview Drwe, Secaucus N.J. 07094, U.S.A.
TEL: 1-800-762-7746, 1-201-902-0347
FAX: 1-201-902-9342

SAMSUNG TECHWIN CO. LTD

145-3 Sangdaewon 1-Dong, Jungwon-Gu,
Sungnam, Kyungki-Do, Korea 462-121
TEL: 82-31-740-8137~8141
FAX: 82-31-740-8145

SAMSUNG SAO PAULO OFFICE.

Rua Professor Manoelito de Ornellas 303 2-andar
Chacara Santo Antonio CEP:04719-040
SAO PAULO SP Brasil
TEL: 55-11-5642-0757
FAX: 55-11-5641-8023

<http://www.samsungcamerausa.com>