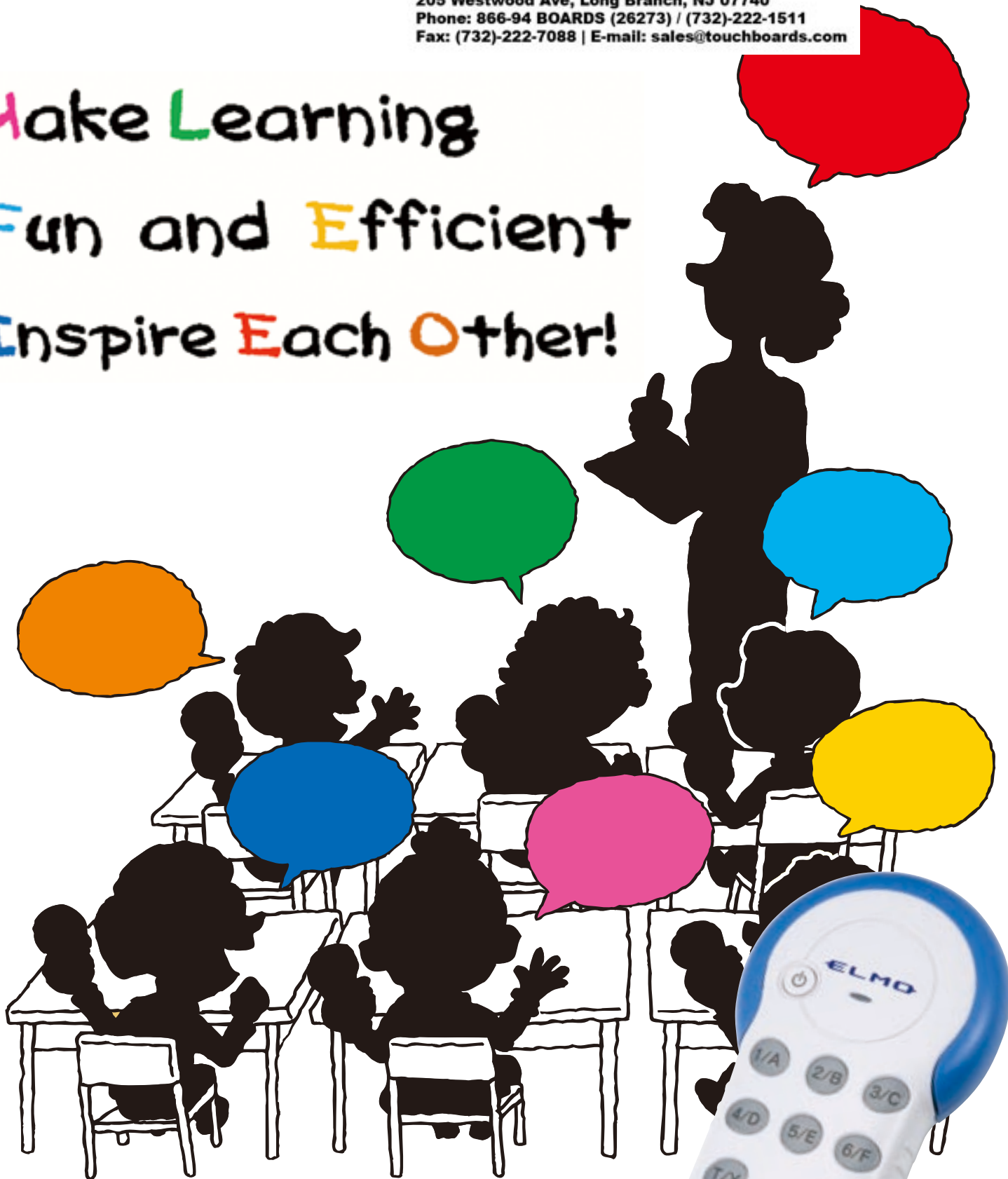


ELMO

Touchboards

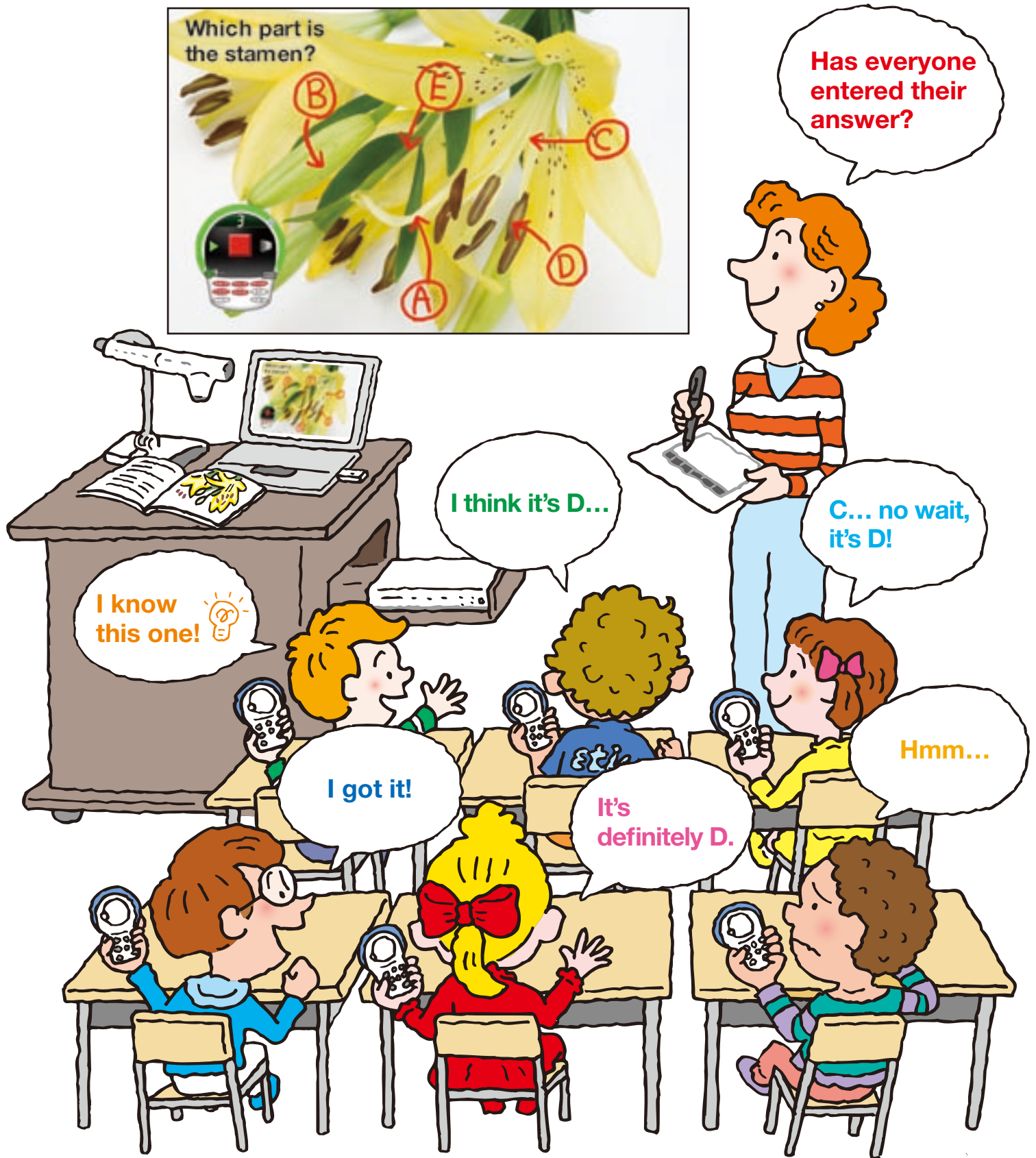
205 Westwood Ave, Long Branch, NJ 07740
Phone: 866-94 BOARDS (26273) / (732)-222-1511
Fax: (732)-222-7088 | E-mail: sales@touchboards.com

Make Learning
Fun and Efficient
Inspire Each Other!



ELMO Student Response System
CRV-24/CRV-32

ELMO Student Response System



Create an Exciting and Interactive Learning Environment

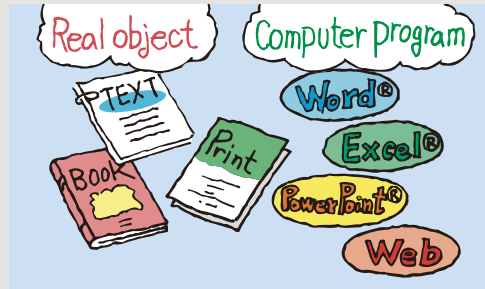
What Is the ELMO Student Response System (SRS)?

With the SRS, each student is given a clicker that can be used to answer questions and take part in quizzes. Student responses are recorded, tabulated, and displayed for teachers, allowing them to measure and confirm student understanding in real time.

Easy for both teachers and students to use!



Can be used anytime and with all types of materials!



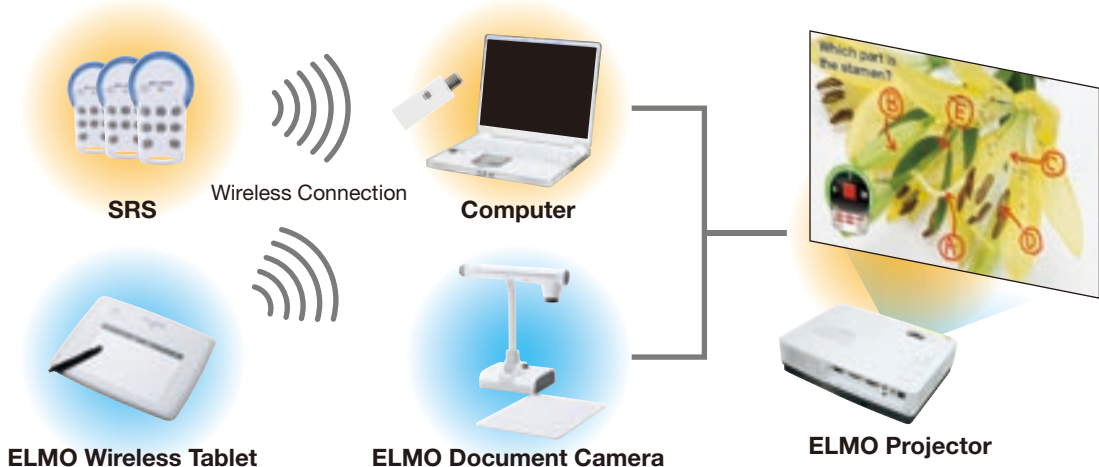
Measures student comprehension in real time. Enhances student participation and motivation to learn.



Helps teachers review and analyze student data for future lesson planning.



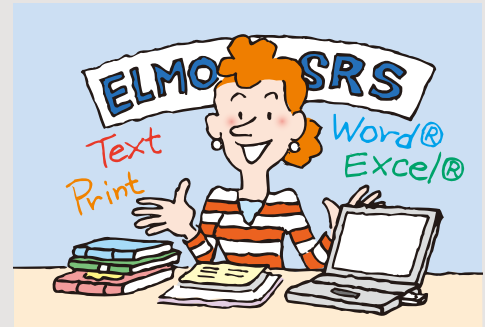
System Configuration



Unprecedented Interactive Learning

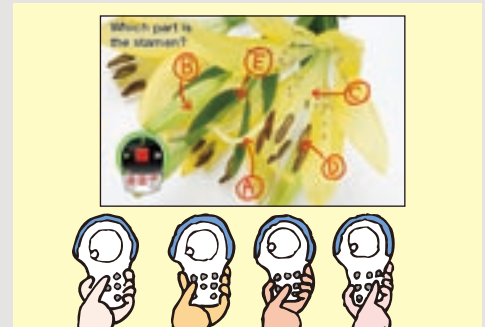
Teacher poses a question

- With an ELMO document camera, existing teaching materials of all kinds (e.g. textbooks, handwritten documents) can instantly become an ELMO SRS quiz bank.
- The SRS also works with nearly all types of computer program files and content. (Word®, Excel®, PowerPoint®, Web content, and more!)



Students respond

- Students use the clickers to key in their answers, which are recorded in the software database.



Results are tabulated

- Student responses are instantly tabulated and displayed in bar graphs or pie charts, allowing teachers to assess the performance of an entire class.



Teacher reviews evaluates analyzes



To Enhance

Review Previous Questions for Future Lesson Planning

Quiz questions that have been asked are automatically captured and saved to the database so teachers can review the questions for lesson planning. Because of the way it aggregates class results, the software is ideal for recognizing what learning concepts are not yet fully understood by a class.

Exciting Visual Effects Create Fun and Exciting Learning Environments



Fast Responder Competitions

The SRS can display the five fastest responders for any given quiz. This speed-ranking feature stimulates friendly competition among students and creates an exciting learning environment.



Group Learning

The SRS makes group learning easy and exciting. The teacher can divide the class into groups and assign each group a different mascot. This helps students develop cooperation skills and learn to work as a team—all while thoroughly engaged in a lesson!



Student Performance Awards

To improve students' motivation to learn, the teacher can select a student who has demonstrated outstanding performance and award him/her a "student of the day" certificate. Various design options for the certificate are available and can be printed out in one click.

Student Performance

Review Individual Student Results

Review Individual Student Results

Individual student achievement can be reviewed and analyzed via the software, which helps teachers manage the grades of individual students and monitor their progress.



CRV-24/CRV-32 Specifications



Full-scale photo

Clicker (Model name: CRV-CK-1)

Operating Temperature Range	32°F – 104°F (0°C – 40°C)
Wireless Band Used	2.4 GHz
Power Supply	AAA dry cell battery x 2
Continuous Operation Time	Approx. 150 hours*1
Battery Life	Approx. 1 year
Auto Power-Off Time	Approx. 300 seconds
Consumption Current	Max. 3.0 V / 60 mA
External Dimensions (L x W x H)	4 11/32" x 2 17/32" x 1 1/32" (110 x 64 x 26 mm)
Weight	3.17 oz (90 g)*2

*1 Differs depending on usage conditions
*2 Including two AAA dry cell batteries



Communication Range	Approx. 49.2 feet (15 m)*
---------------------	---------------------------

* Differs depending on usage conditions



Full-scale photo

Wireless Adapter (Model name: CRA-1R)

Operating Temperature Range	32°F – 104°F (0°C – 40°C)
Wireless Band Used	2.4 GHz
PC Interface	USB type A plug (USB 2.0 hi-speed)
Power Supply	USB bus power
Consumption Current	Max. 5.0 V / 50 mA
External Dimensions (L x W x H)	2 17/32" x 7/8" x 13/32" (64 x 22 x 10 mm)
Weight	0.39 oz (11 g)

Number of Registrable Clickers	Max. 50 pcs
--------------------------------	-------------



Software (Image Mate Accent for SRS)

Computer Model	IBM PC/AT compatible
Operating System (OS)	Windows® 7 (32/64-bit) Windows Vista® SP1 (32/64-bit) Windows® XP SP2 (32-bit)
CPU	Intel® Core™2 Duo 2GHz equivalent or higher
Memory	2GB or more
Hard Disk	1GB or more
Video Board	Compatible with Microsoft DirectX® 9.0c



Carrying Bag

Storage Temperature Range	-4°F – 140°F (-20°C – 60°C)
Number of Clicker Compartments	32
External Dimensions (L x W x H)	16 23/32" x 14 3/8" x 6 1/2" (425 x 365 x 165 mm)
Weight*	CRV-24: 7.1 lbs (3.2 kg) CRV-32: 8.8 lbs (4.0 kg)

* Including accessories and one wireless adapter

Options

◆ Need more clickers?



CRV-CK-1

◆ Need to use a textbook or live object to pose questions?



ELMO Document Cameras

◆ Need to control the SRS remotely?



ELMO Wireless Tablet/Slate CRA-1

ELMO CO., LTD.

6-14, Meizen-cho, Mizuho-ku
Nagoya, 467-8567, Japan
E-mail : overseassales@elmo.co.jp

London Branch

Crown House, 72
Hammersmith Road, London
W14 8TH, U.K.
Tel. 44 (0207) 559-1388
Fax. 44 (0207) 559-1389
E-mail : info@elmo-visualiser.co.uk
Web : <http://www.elmo-visualiser.co.uk>

Taipei Office

11F, Unit #7, No. 171
Songde Road, Xinyi District
Taipei City, 110 Taiwan (R.O.C.)
Tel. 886 (0)2 2759 5585
Fax. 886 (0)2 2759 5586

India Office

#3161, 12th Main Service Road
HAL 2nd Stage, Indiranagar
Bangalore-560 038, India
Tel. 91 (0)8025281994
E-mail : info@elmo.co.in

Distributed by

ELMO USA Corp.

Headquarters
1478 Old Country Road
Plainview, NY 11803, U.S.A.
Tel. (516) 501-1400
Fax. (516) 501-0429
E-mail : elmo@elmousa.com
Web : <http://www.elmousa.com>

West Coast Branch

5676 Corporate Avenue
Cypress, CA 90630, U.S.A.
Tel. (714) 828-8457
Fax. (714) 828-8429

ELMO Europe SAS

Headquarters
Immeuble Elysées La Défense
7C Place du Dôme
92056 Paris La Défense
France
Tel. 33 (0)1 73 02 67 06
Fax. 33 (0)1 73 02 67 10

German Branch

Hansaallee 201, Haus 1
40549 Düsseldorf
Germany
Tel. 49 (0)211 5447 5640
Fax. 49 (0)211 5447 5660

ELMO (Beijing) Co., Ltd.

Room 1002, 10F, Build. 5, Wanda Plaza
No. 93, Jianguo Road, Chaoyang District
Beijing 100020 P.R. China
Tel. 86 10 5960 3890
Fax. 86 10 5960 3424



This brochure is printed on recycled paper with environmentally friendly vegetable oil-based ink.