

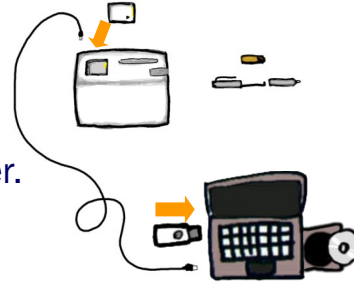
## QUICK TRAINING GUIDE:

CRA-1 Wireless Tablet

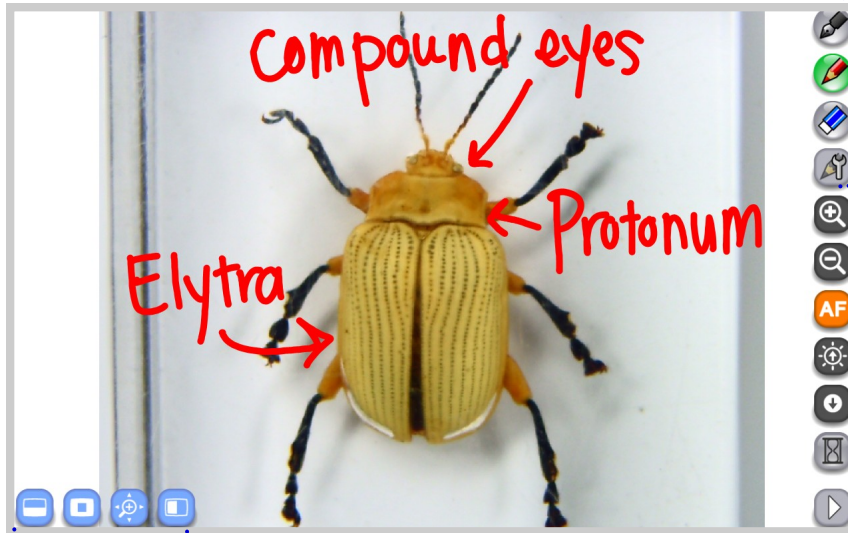
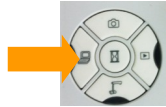
Training Video: <http://www.elmoussa.com/cra-1-wireless-slatetablet>



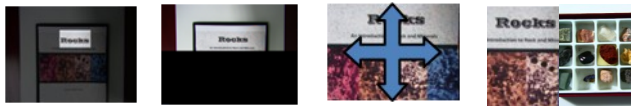
- 1 Insert batteries into CRA-1 and pen.  
 Charge CRA-1 via USB cable.  
 Power on ELMO (if available) and CRA-1.  
 Insert CRA-1 Wireless Adapter into computer.  
 Install Image Mate Accent software.



- 2 On the ELMO, switch to Computer Mode.  
 Open Image Mate Accent software.  
 You will see the live image from the ELMO.



Presentation Tools



Mask Highlight Scroll Split screen

The **Highlight** allows you to emphasize a specific area of the image.

The **Mask** feature lets you to hide the answer to a written problem or following along when reading text, etc.

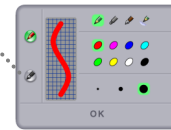
Press the **Scroll** to zoom instantly then scroll around your image.

Use **Split Screen** to compare the still image to the live image.

- 3 Annotate and Erase  
 Erase a single annotation by pressing pen button.



Demonstrate how to fold origami



Choose Pen 1 or Pen 2 and select your pen type, color and thickness.

**Desktop mode** allows your Tablet to control the desktop as a wireless mouse. Click on the Camera icon to annotate on the desktop.



Next Menu



- 4

Capture an image and record video

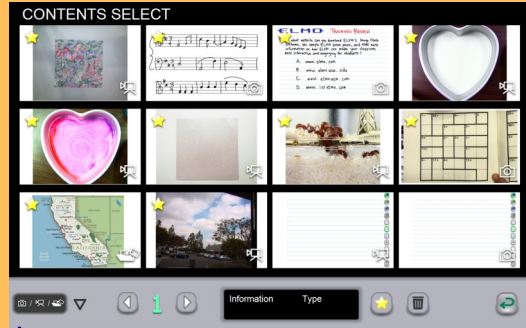
Add Stamps to your background

Record science experiments



## Recall and Review

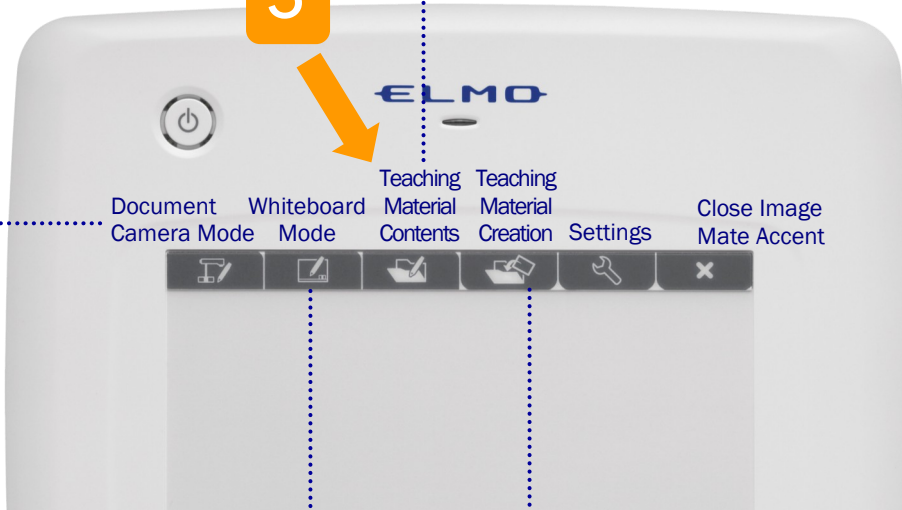
Double tap to view pictures, play videos and open teaching material files.  
Use the Star/Favorite icon to keep frequently used files on the top page.



## Recall saved images and videos

5

View live image from ELMO document camera (see page 1)



Document Camera Mode    Whiteboard Mode    Teaching Material Contents    Teaching Material Creation    Settings    Close Image Mate Accent

Lesson 4 Spelling

likable	invisible
removable	responsible
printable	horrible
adorable	feasible
comfortable	irritable
usable	applicable

Lined paper

*Write all words 3 times in English journal*

- Grid
- Music Staff
- Writing paper
- Whiteboard

Use the CRA-1 as a mobile interactive whiteboard

## Create your own teaching materials

Import images from your computer to create lesson backgrounds. Add text and stamps then save for future lessons.

Import images from computer to background.

Click Save to save your background and objects. You will be able to reposition and manipulate objects when opened later.

Create Time-lapse videos and Animations