

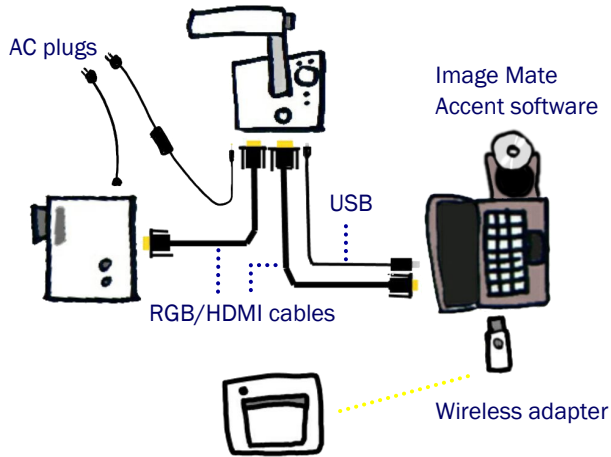
## QUICK TRAINING GUIDE: TT-02RX + CRA-1 Wireless Tablet

### Setting up

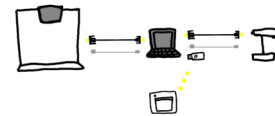
**1** Configure your classroom. See configurations below.

**2** Insert batteries into CRA-1 and pen. Charge CRA-1 via USB cable.

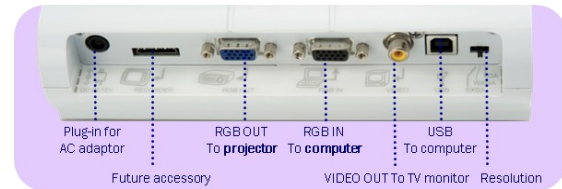
#### Standard Configuration



#### Interactive Whiteboard Configuration



#### Rear panel



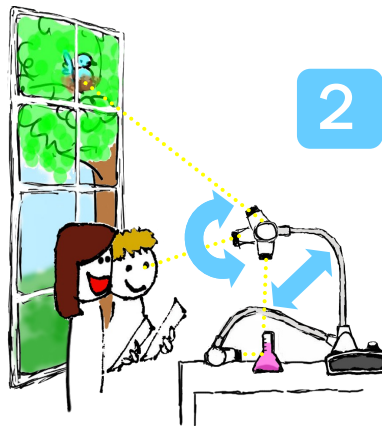
### TT-02RX Basics

**1** Zoom  
 Twist the zoom knob to zoom in/out.



Press the Auto-focus button to focus after zooming.

**2** Rotate  
 Rotate the camera column close to a small object or turn the camera head horizontally to view students giving a presentation, speech, etc.



**3**  
 Capture an image and save to SD card

Pause the camera image.  
 Press again to unfreeze.

#### C. Review saved images

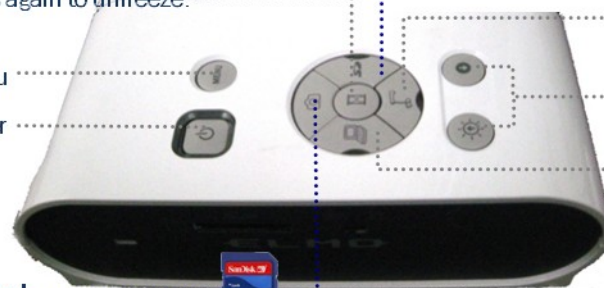
Menu  
 Power

View the live image  
 Adjust brightness  
 View computer desktop

A. Insert SD card



B. Capture image



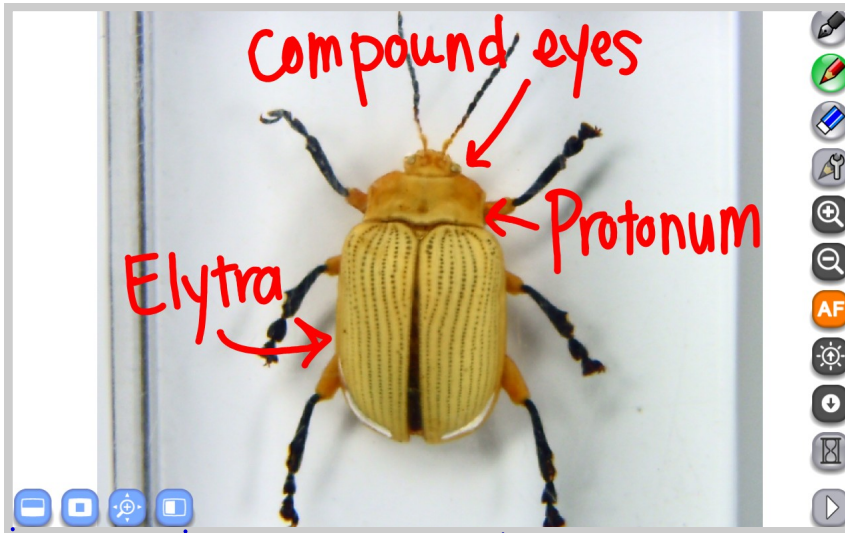
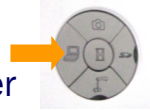
## CRA-1 Wireless Tablet + Image Mate Accent

**1** Power on TT-02RX and CRA-1 Wireless Tablet. Insert Wireless Adapter into computer.



Ensure Image Mate Accent has been installed.

**2** On the TT-02RX, switch to Computer Mode. Open Image Mate Accent software.



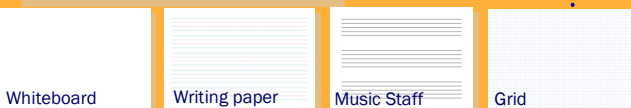
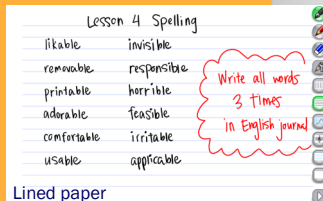
**3** Annotate and Erase  
Erase a single annotation by pressing pen button.

Desktop mode allows your Tablet to control the desktop as a wireless mouse.

**4** Capture an image and record video

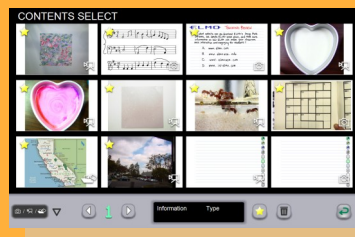
Presentation Tools. Use the **Mask, Highlight, Scroll** and **Split Screen** features to enhance your lesson.

**5** Recall saved images and videos



### Recall and Review

Double tap to view pictures, play videos and manipulate teaching materials. Use the Star/Favorite icon to keep frequently used files on page 1.



Create Time-lapse videos and Animations

### Create your own teaching materials

Import images from your computer to create lesson backgrounds. Add text and stamps then save for future use.

