

# Advanced Installation Tools for Pro Series Projectors

Simplify and speed up projector setups with Advanced Installation Tools for Epson<sup>®</sup> Pro Series projectors. Utilize powerful desktop and mobile apps, NFC functionality and cameras to access a variety of tools including automated features, such as tiling assist<sup>1</sup> for edge blending, stacking assist<sup>2</sup>, auto color calibration and screen matching<sup>3</sup>



# Setup Made Easy



 Built-in NFC

Mobile device not included

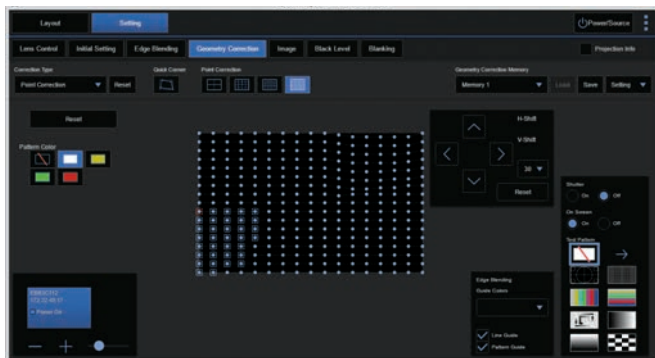
## Built-in and Attachable Cameras

Built-in cameras and the optional PixAlign™ ELPE01 camera provide convenient access to adjustment tools, such as color calibration, tiling assist<sup>1</sup> and stacking assist<sup>2</sup> function, to speed up projector setups.

The PixAlign camera quickly attaches to the front of the projector or the UST lens<sup>5</sup> without tools or angle-of-view adjustment for fast installation.

## NFC Function

Reduce the time and effort required to install multiple units with select Pro Series projectors that offer built-in NFC functionality<sup>4</sup>. When paired with the Epson Projector Configuration Tool (EPCT) app for Android™ and iOS®, the NFC feature allows for the reading and writing of projector information, even when the projector is powered off and still in its carton. Transfer settings from a master projector to other projectors in the network or, alternatively, import the desired settings from a database file.



## Epson Projector Professional Tool (EPPT)

EPPT makes it easy to install and manage multiple networked projectors in a single large space from a single PC. Available for Windows® and macOS®, it features advanced tools, including geometric correction and edge blending — plus an easy-to-use interface — for fast, convenient operation, versus utilizing a remote controller. Download it for free at [www.epson.com](http://www.epson.com)

# Powerful Adjustment Tools

Epson cameras provide access to a variety of convenient tools to streamline installation, maintenance and operation.



Projected images simulated

## Stacking Assist Function

Using geometric correction — via EPPT and the camera — the stacking assist<sup>2</sup> function gives users the ability to combine overlapping images to produce a stunning, super-bright picture. The Simple Stacking function on select Pro Series projectors performs the stacking function without the need for a router or laptop.



Projected images simulated

## Remote Support

The camera enables convenient remote support by providing real-time camera captures of the projected display for fast, easy troubleshooting.

## Color Calibration and Screen Matching

Ideal for both single- and multi-projector installations, color calibration automatically adjusts color to produce vibrant, crisp images. In addition, screen matching<sup>3</sup> smooths out color inconsistencies across multiple networked projectors for high-impact multi-display presentations or stunning edge-blended super-wide screen displays. For added convenience, both features can be set on a schedule.

Before Geometry Correction Assist for Stacking



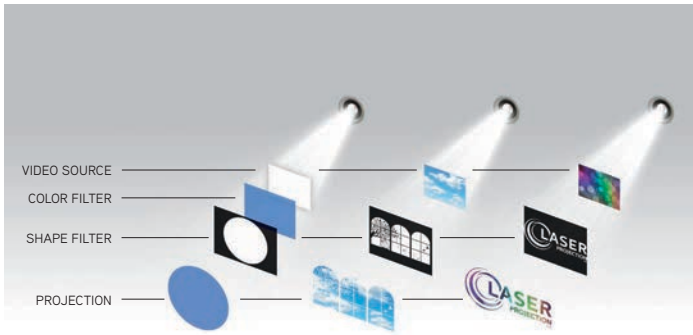
Projected images simulated

## Tiling Assist for Edge Blends

Capable of tiling up to 15 projectors — and up to a 300" screen per projector — tiling assist<sup>1</sup> provides fast edge blending via EPPT software and the camera to quickly deliver a single, seamless, super-sized image.



# Additional Tools



## Media Playback and Overlay Effects

Using the Epson Content Management application for macOS or Windows, you can easily create and save media playlists to a network drive, USB or SD card connected to compatible projectors. The app also offers a suite of creative tools, including overlay effects, which let you quickly create a diverse range of visual effects by adding color and shape filters on top of your projected image.

## Curved Surface/Corner Wall Projection

Ideal for curved-surface or corner wall applications, this tool swiftly corrects vertical and/or horizontal distortion to display an amazing image. Flexible and adjustable, this feature lets you adjust the shape of the image to best fit the parameters of the projection surface.

## Edge Blending

Engineered for super-wide displays, the built-in edge blending tool merges the edges of projected images for a seamless look. Offering point-correction and crop/zoom capability, this intuitive tool makes it easy to create stunning, high-quality edge-blend displays without the need for additional applications or equipment.

## Scale Function for Edge Blends

Epson Pro Series projectors feature a unique scale function that automatically prepares content from a single-channel video source for edge blending without having to use signal cutting machines, high-spec computers and other specialized equipment.



## Continuous Improvement

Epson is dedicated to delivering innovative features that maximize the value of your investment. From curved-surface projection solutions to geometry correction and color calibration via the external camera, Epson continues to provide cutting-edge tools for enhanced convenience. To access the full suite of Epson Pro Series features, download the latest firmware here: [www.epson.com/support/projectors](http://www.epson.com/support/projectors)



**Epson America, Inc.**  
3131 Katella Ave., Los Alamitos, CA 90720  
Please visit us at [epson.com/advanced-projector-installation-tools](http://epson.com/advanced-projector-installation-tools)

**Epson Canada Limited**  
185 Renfrew Drive, Markham, Ontario L3R 6G3  
Please visit us at [www.epson.ca/advanced-projector-installation-tools](http://www.epson.ca/advanced-projector-installation-tools)

<sup>1</sup> Requires Epson external camera or built-in camera for each projector and the Epson Projector Professional Tool app. | <sup>2</sup> Requires Epson external camera or built-in camera for each projector and may, depending on your projector, require Epson Projector Professional Tool app. | <sup>3</sup> Using separate camera for each projector. | <sup>4</sup> NFC requires use of a device that includes NFC and may require additional software. | <sup>5</sup> Built for use with select Epson projector lenses.

EPSON is a registered trademark and EPSON Exceed Your Vision is a registered logomark of Seiko Epson Corporation. PixAlign is a trademark of Epson America, Inc. macOS is a trademark of Apple Inc., registered in the U.S. and other countries. Android is a trademark of Google LLC. Windows is either a registered trademark or trademark of Microsoft Corporation in the United States and other countries. All other product and brand names are trademarks and/or registered trademarks of their respective companies. Epson disclaims any and all rights in these marks. Copyright 2022 Epson America, Inc. CPD-61216 6/22