



ergonomic
solutions

Workplace comfort. **Simplified.**

Touchboards

205 Westwood Ave, Long Branch, NJ 07740

Phone: 866-94 BOARDS (26273) / (732)-222-1511

Fax: (732)-222-7088 | E-mail: sales@touchboards.com

Order
ESI
samples

LIGHTING

The ESI lighting collection features both desktop and under cabinet lights with sleek profiles that blend well with any environment. In addition to being energy efficient and cost-effective, the collection offers features such as occupancy sensors, dimmers and USB ports.

DESKTOP TASK LIGHTING

LUSTRE

- Color Temperature: 3500K
- Lumens: 350
- CRI: 83
- 6W
- Lamp life: 50,000 hours
- 180° rotation at light source and lamp arm
- 360° rotation on base
- Cord length: 12 Feet
- Telescoping arm and head
- Occupancy sensor
- USB charging port

PART #

- LUSTRE LUSTRE-WHT



Single touch control



Lamp arm and head fold together



Standard base with USB charger



Telescoping arm and head provides flexible light control

DESKTOP TASK LIGHTING

VIVID SERIES

- Color Temperature: 3500K
- Lumens: 356
- CRI: 85
- 6W
- Lamp life: 50,000 hours
- 180° rotation at light source
- 360° rotation on base
- Built-in dimmer
- 8 hour auto shut-off

PART #

VIVID-X

VIVID-LEX

* For additional mounting options for the VIVID Series, please visit our website or call Customer Service for details.



VIVID-X

- Single arm
- Total reach: 21"



VIVID-LEX

- Two arms
- Total reach: 36"

OMEGA LX3

- Color Temperature: 3500K
- Lumens: 320
- CRI: 85
- 7W
- Lamp life: 50,000 hours
- Built-in touch strip with multiple dimming levels
- Two arms, 14.15" and 15" connected by a fully articulating joint
- Low profile: 7.5" base with 360° rotation
- Reach: over 20"
- C-UL-US Certified

PART #

OMEGA-LX3

* For additional mounting options for the OMEGA Series, please visit our website or call Customer Service for details.



OPTIONAL OCCUPANCY SENSOR

- Turns lamp off if no motion is detected for 15 minutes
- Resumes last brightness setting when motion is detected
- Detects motion in a maximum range of 9.8 ft
- Compact - just .55"W x 1"H x .055"D

PART #

OMEGA-LX3-OS

PIXIE LED

- Color Temperature: 3000K
- Lumens: 250
- CRI: 80
- 3W
- Small profile
- Lightweight
- 11.8" reach

PART #

PIXIE-LED



PIXIE LEDX

- Color Temperature: 3000K
- Lumens: 250
- CRI: 80
- 3W
- Small profile
- Lightweight
- 11.8" reach
- Built-in dimmer
- 8 hour auto shut-off

PART #

PIXIE-LEDX



UNDER CABINET LIGHTING



SINGLE UNITS

PART #	WATTAGE	ACTUAL DIMENSIONS
LEDG2-24	11	20" X 1" X 1.2"
LEDG2-36	14	25" X 1" X 1.2"

DAISY CHAIN CONFIGURATIONS

PART #	DAISY CHAIN UNITS
LEDG2-24X2	2 UNITS
LEDG2-36X2	2 UNITS
LEDG2-24X3	3 UNITS
LEDG2-36X3	3 UNITS

* For more Daisy Chain Configurations, please visit our website or contact Customer Service for details.

G2 SERIES

- Color Temperature: 3500K
- Lumens: 550 = 24" / 740 = 36"
- CRI: 85
- 11W = 24" / 14W = 36"
- Lamp life: 50,000 hours
- 2 lengths: 24", 36" (nominal)
- Continuous dimmer
- Optional occupancy sensor
- Removable optical diffuser
- Daisy chain configurations include 24" jumper cord
- Combination wood and magnet mount
- Light bar rotates 360°



REMOVABLE OPTICAL DIFFUSER

The easily-removable optical diffuser enables the user to alter the light distribution. Diffuser mounts magnetically making it easy to remove or snap on.

OPTIONAL OCCUPANCY SENSOR

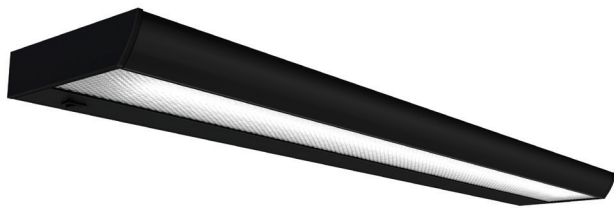
- Turns lamp off if no motion is detected for 15 minutes
- Resumes last brightness setting when motion is detected
- Three-way power connection allows the sensor to be installed at any point along a daisy chain configuration



PART #

LED-OS

FLUORESCENT SERIES



The energy efficient T5 lamps used in these under cabinet lights emit minimal heat while providing optimal illumination.

- Color Temperature: 3300K
- Lumens: 260 = 24" / 759 = 48"
- Prismatic lens
- Energy efficient T5 fluorescent lamp
- 9' power cord with additional outlet for daisy chain configurations

PART #	FOR SHELF SIZE	ACTUAL DIMENSIONS	WATTAGE
UCL24MAG	24"	21.7" X 6.375" X 2"	13
UCL48MAG	48"	35" X 6.375" X 2"	39

LUCERA SERIES



- Color Temperature: 3500K
- Lumens: 250 = 24"/420 = 36"
- CRI: 85
- 6.3W = 24" / 10.3W = 36"
- Includes wood and magnet mount
- Continuous dimming

SINGLE UNITS

PART #	LED'S	ACTUAL DIMENSIONS
LUCERA-24	21	20.1" X .8" X .5"
LUCERA-36	35	31.7" X .8" X .5"

DAISY CHAIN CONFIGURATIONS

PART #	DAISY CHAIN UNITS
LUCERA-24X2	2 UNITS
LUCERA-36X2	2 UNITS
LUCERA-24X3	3 UNITS
LUCERA-36X3	3 UNITS

* For more Daisy Chain Configurations, please visit our website or contact Customer Service for details.



FACTORY & SHOWROOM
4030 EAST QUENTON DRIVE
MESA, ARIZONA 85215

CHICAGO SHOWROOM
MERCHANDISE MART
SHOWROOM 10-100
CHICAGO, ILLINOIS 60654

P: 800.833.3746
info@esiergo.com
esiergo.com

The logo for Touchboards features the word 'Touchboards' in a bold, black, sans-serif font. The letters 'T', 'C', and 'B' are each enclosed in a colored square: 'T' is yellow, 'C' is blue, and 'B' is orange. The remaining letters 'o', 'u', 'c', 'h', 'b', 'o', 'a', 'r', 'd', 's' are in black and are not enclosed in squares.

Touchboards

205 Westwood Ave, Long Branch, NJ 07740
Phone: 866-94 BOARDS (26273) / (732)-222-1511
Fax: (732)-222-7088 | E-mail: sales@touchboards.com

GSA Contract Holder

WOMAN-OWNED
Small Business

© 2015 ESI Ergonomic Solutions
All rights reserved.