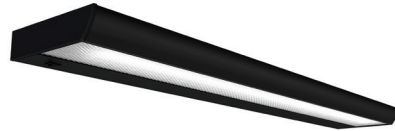


UNDER CABINET LIGHT COMPARISON

ESI ERGONOMIC SOLUTIONS



PART#	UCLMAG-24	UCLMAG-48	LUCERA-24	LUCERA-36	LEDG2-24	LEDG2-36
TYPE	T5 FLUORESCENT	T5 FLUORESCENT	LED	LED	LED	LED
COLOR TEMPERATURE	BULB DEPENDENT	BULB DEPENDENT	3,500K	3,500K	3,500K	3,500K
CRI	BULB DEPENDENT	BULB DEPENDENT	85	85	85	85
LUMENS	BULB DEPENDENT	BULB DEPENDENT	250	580	430 (w/diffuser) 550 (w/o diffuser)	580 (w/diffuser) 740 (w/o diffuser)
FIXED WATTAGE	BULB DEPENDENT	BULB DEPENDENT	6.3W	10.3W	11W	14W
RATED LIFE	BULB DEPENDENT	BULB DEPENDENT	50,000	50,000	50,000	50,000
DIMMING	N/A	N/A	YES	YES	YES	YES
OCCUPANCY SENSOR	N/A	N/A	N/A	N/A	OPTIONAL + \$109	OPTIONAL + \$109
MOUNTING OPTIONS	MAGNETIC/WOOD	MAGNETIC/WOOD	MAGNETIC/WOOD	MAGNETIC/WOOD	MAGNETIC/WOOD	MAGNETIC/WOOD
DAISY CHAIN CAPABLE	YES	YES	YES	YES	YES	YES
MAX # OF DAISY CHAIN	5	5	7	4	4	3
ROTATION	N/A	N/A	N/A	N/A	360°	360°
CORD LENGTH	9'	9'	11'	11'	11'	11'
AVAILABLE ON GSA	YES	YES	YES	YES	YES	YES
LIST PRICE	\$181	\$220	\$290	\$398	\$407	\$503