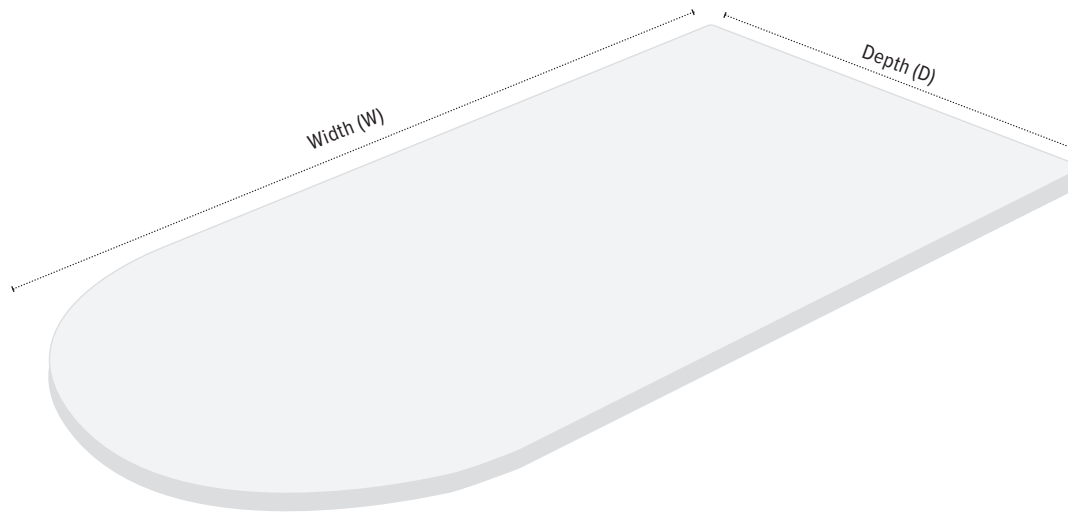


LT=Call for on-hand availability



Dimensions		Specify laminate (2 letter code)		Compatible table bases (As indicated by the •)									
		Model #	Standard Price	Triumph-LX	Victory 2-leg	Victory-LX 3-leg	All-Flex 2-leg	All-Flex 3-leg	Premium 2-leg	Premium 3-leg	Q Crank	Espree	Weight Adjustable Espree
W	D												
60	30	D6030__	\$768	•	•		•		•		•	•	•
72	30	D7230__	\$837	•	•		•		•		•		
84	30	D8430__	\$1,041		•		•		•				

Standard price of worksurface includes standard laminate choice with square edge profile and coordinating edge band. Please contact the Customer Service department for pricing on non-standard profiles and laminates

Standard Laminates

Standard worksurfaces - LT

Typical lead time is 10-14 business days for production of worksurfaces. Please indicate laminate choice by adding the 2-letter code at the end of the worksurface model number. Worksurfaces are not sold separately and must be purchased with a table base.

Warranty: 5 yr.

Standard laminate options

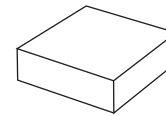
Worksurfaces are available in 38 standard Wilsonart® laminate options and 3 standard Formica® laminate options. Additional non-standard laminate options are available from Formica®, Nevamar®, Pionite®, and more. Call our Customer Service Department for more information.

Non-standard edge detail

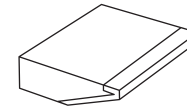
For information on additional edge detail options including 3mm knife edge and urethane (urethane available in square edge, knife edge, bullnose, or ergo edge), contact our Customer Service Department for model numbers and pricing.

Standard price of worksurface includes standard square edge profile and coordinating 3MM Edge Band. Alternative edge detail options are available in urethane edge bands only.

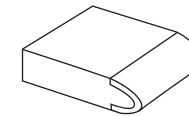
Call our Customer Service Department for more information.



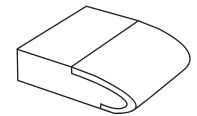
Square edge



Knife edge



Bullnose edge



Ergo edge

EXAMPLE: How to specify your standard worksurface

1. Pick your worksurface and size
(required)

D6030-TT

2. Pick your laminate finish
(required)

D6030-TT

This product number represents:
D-top worksurface
60.0" wide
30.0" deep
Wilsonart Titanium ev laminate

Standard Laminates

Laminate images are not ideal representations of the laminate product. ESI highly recommends requesting samples from the laminate manufacturer prior to purchase.

More laminate options are available. Please contact our Customer Service Department for more information.

Woodgrains



Color code: AH
Color name: Acajou mahogany
Finish: Matte
3mm edge band color: Classic mahogany
Manufacturer: Formica

Color code: BE
Color name: Beigewood
Finish: Matte
3mm edge band color: Jute
Manufacturer: Wilsonart

Color code: BW
Color name: Brighton walnut
Finish: Fine velvet
3mm edge band color: Imperial walnut
Manufacturer: Wilsonart

Color code: CO
Color name: Castle oak
Finish: Fine velvet
3mm edge band color: Castle walnut
Manufacturer: Wilsonart

Color code: FM
Color name: Fusion maple
Finish: Matte
3mm edge band color: Norway maple
Manufacturer: Wilsonart

Color code: KM
Color name: Kensington maple
Finish: Matte
3mm edge band color: Sugar maple
Manufacturer: Wilsonart

Color code: MM
Color name: Monticello maple
Finish: Fine velvet
3mm edge band color: Candlelight maple
Manufacturer: Wilsonart



Color code: SC
Color name: Shaker cherry
Finish: Matte
3mm edge band color: Kodiak brown
Manufacturer: Wilsonart

Color code: SO
Color name: Solar oak
Finish: Matte
3mm edge band color: Castle walnut
Manufacturer: Wilsonart

Color code: WC
Color name: Wild cherry
Finish: Matte
3mm edge band color: Rainier cherry
Manufacturer: Wilsonart

Solids



Color code: FS
Color name: Folkstone
Finish: Matte
3mm edge band color: Folkstone
Manufacturer: Formica

Color code: AW
Color name: Antique white
Finish: Matte
3mm edge band color: White sand
Manufacturer: Wilsonart

Color code: BK
Color name: Black
Finish: Matte
3mm edge band color: Black
Manufacturer: Wilsonart

Color code: DG
Color name: Dove grey
Finish: Matte
3mm edge band color: Dove grey
Manufacturer: Wilsonart

Color code: DW
Color name: Designer white
Finish: Matte
3mm edge band color: Designer white
Manufacturer: Wilsonart

Color code: FW
Color name: Frosty white
Finish: Matte
3mm edge band color: Frosty white
Manufacturer: Wilsonart

Color code: NS
Color name: North sea
Finish: Matte
3mm edge band color: Shaker gray
Manufacturer: Wilsonart



Color code: PE
Color name: Pepperdust
Finish: Matte
3mm edge band color: Pepperdust
Manufacturer: Wilsonart

Color code: WS
Color name: White sand
Finish: Matte
3mm edge band color: White sand
Manufacturer: Wilsonart

Standard Laminates

Laminate images are not ideal representations of the laminate product. ESI highly recommends requesting samples from the laminate manufacturer prior to purchase.

More laminate options are available. Please contact our Customer Service Department for more information.

Patterns



Color code: FG
Color name: Folkstone grafix
Finish: Matte
3mm edge band color: Folkstone
Manufacturer: Formica



Color code: CN
Color name: Cloud nebula
Finish: Matte
3mm edge band color: Anchor gray
Manufacturer: Wilsonart



Color code: CZ
Color name: Canyon zephyr
Finish: Matte
3mm edge band color: Dove gray
Manufacturer: Wilsonart



Color code: DZ
Color name: Desert zephyr
Finish: Matte
3mm edge band color: Jute
Manufacturer: Wilsonart



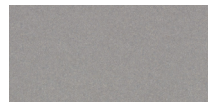
Color code: GM
Color name: Grey mesh
Finish: Fine velvet
3mm edge band color: Pepperdust
Manufacturer: Wilsonart



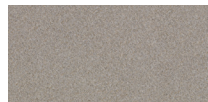
Color code: GN
Color name: Grey nebula
Finish: Matte
3mm edge band color: Summer rain
Manufacturer: Wilsonart



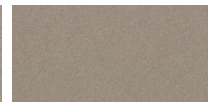
Color code: LZ
Color name: Cloud zephyr
Finish: Matte
3mm edge band color: Jute
Manufacturer: Wilsonart



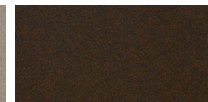
Color code: MZ
Color name: Misted zephyr
Finish: Matte
3mm edge band color: Dolphin
Manufacturer: Wilsonart



Color code: NK
Color name: Nickel ev
Finish: Matte
3mm edge band color: Anchor gray
Manufacturer: Wilsonart



Color code: NZ
Color name: Loden zephyr
Finish: Matte
3mm edge band color: Safari sage
Manufacturer: Wilsonart



Color code: OZ
Color name: Morro zephyr
Finish: Matte
3mm edge band color: French roast
Manufacturer: Wilsonart



Color code: PM
Color name: Pewter mesh
Finish: Fine velvet
3mm edge band color: Cinder
Manufacturer: Wilsonart



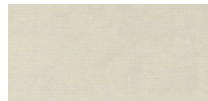
Color code: PZ
Color name: Spiced zephyr
Finish: Matte
3mm edge band color: Black
Manufacturer: Wilsonart



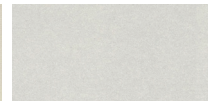
Color code: RN
Color name: Graphite nebula
Finish: Matte
3mm edge band color: Black
Manufacturer: Wilsonart



Color code: SI
Color name: Silicon ev
Finish: Matte
3mm edge band color: Brownstone
Manufacturer: Wilsonart



Color code: SM
Color name: Sheer mesh
Finish: Fine velvet
3mm edge band color: White sand
Manufacturer: Wilsonart



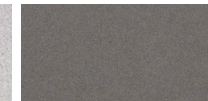
Color code: SZ
Color name: Shadow zephyr
Finish: Matte
3mm edge band color: Folkstone
Manufacturer: Wilsonart



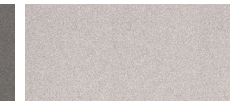
Color code: TG
Color name: Tungsten ev
Finish: Matte
3mm edge band color: Jute
Manufacturer: Wilsonart



Color code: TT
Color name: Titanium ev
Finish: Matte
3mm edge band color: Folkstone
Manufacturer: Wilsonart



Color code: TZ
Color name: Twilight zephyr
Finish: Matte
3mm edge band color: Cinder
Manufacturer: Wilsonart



Color code: WN
Color name: White nebula
Finish: Matte
3mm edge band color: Folkstone
Manufacturer: Wilsonart



Color code: WT
Color name: White tigris
Finish: Matte
3mm edge band color: Shaker gray
Manufacturer: Wilsonart

Non-Standard Laminates Urethane Edge Options

Standard worksurfaces - LT

Typical lead time is 10-14 business days for production of worksurfaces. Please indicate laminate choice by adding the 2-letter code at the end of the worksurface model number. Worksurfaces are not sold separately and must be purchased with a table base. Warranty: 5 yr.

Urethane Laminate options

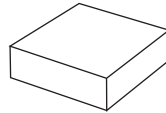
Worksurfaces are available in 131 standard laminate options and 3 standard Formica® laminate options. Additional non-standard laminate options are available from Formica®, Nevamar®, Pionite®, and more. Call our Customer Service Department for more information.

Non-standard edge detail

For information on additional edge detail options including 3mm knife edge and urethane (urethane available in square edge, knife edge, bullnose, or ergo edge), contact our Customer Service Department for model numbers and pricing.

Standard price of worksurface includes standard square edge profile and coordinating 3MM Edge Band. Alternative edge detail options are available in urethane edge bands only.

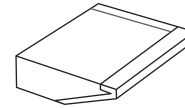
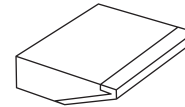
Call our Customer Service Department for more information.



Urethane Square Edge

US-USE
Model # specifies urethane edge detail on **User Side** only

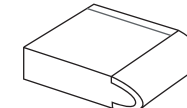
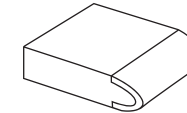
AS-USE
Model # specifies urethane edge detail on **All Sides** of worksurface



Urethane Knife Edge

US-UKE
Model # specifies urethane edge detail on **User Side** only

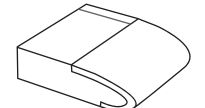
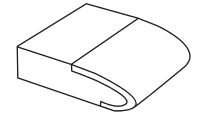
AS-UKE
Model # specifies urethane edge detail on **All Sides** of worksurface



Urethane Bullnose Edge

US-UBE
Model # specifies urethane edge detail on **User Side** only

AS-UBE
Model # specifies urethane edge detail on **All Sides** of worksurface



Urethane Ergo Edge

US-UEE
Model # specifies urethane edge detail on **User Side** only

AS-UEE
Model # specifies urethane edge detail on **All Sides** of worksurface

EXAMPLE: How to specify your non-standard worksurface

1. Pick your worksurface and size (required)

D6030-KM

2. Pick your laminate finish (required)

D6030-KM

3. Pick your edge detail (5-digit code) + laminate (3-digit code) (optional)

D6030-KM-AS-UEE-329

This product number represents:
D-top worksurface
60.0" wide
30.0" deep
Wilsonart Kensington Maple laminate
Urethane Ergo Edge - All sides
Sweet Maple

Urethane Edge Colors

Laminate images are not ideal representations of the laminate product. ESI highly recommends requesting samples from the laminate manufacturer prior to purchase.

More laminate options are available. Please contact our Customer Service Department for more information.

• Matching vinyl edge available

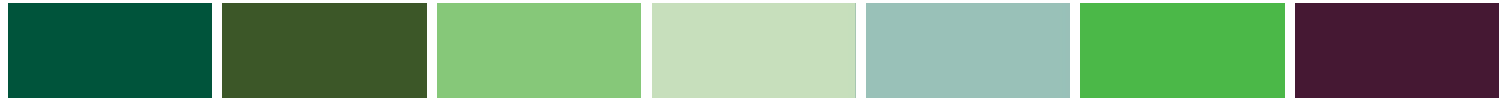
Vibrant colors



Color code: 323 ● Color name: Atlantis	Color code: 360 Color name: Azul	Color code: 034 Color name: Blue Frost	Color code: 345 Color name: Blue Jay	Color code: 325 Color name: Cadet Blue	Color code: 074 Color name: Hula Blue	Color code: 351 Color name: Lake Geneva
--	--	--	--	--	---	---



Color code: 307 Color name: Shady Lane	Color code: 375 Color name: Sky	Color code: 328 Color name: Periwinkle	Color code: 076 Color name: Turquoise	Color code: 067 Color name: Victorian Teal	Color code: 015 Color name: Black Forest	Color code: 374 Color name: Mallard
--	---	--	---	--	--	---



Color code: 346 Color name: Ireland Green	Color code: 377 Color name: Loden	Color code: 051 Color name: Kiwi	Color code: 332 Color name: Meadow Mist	Color code: 309 Color name: Spring Green	Color code: 070 Color name: Tree Frog	Color code: 315 Color name: Purpulous
---	---	--	---	--	---	---



Color code: 305 Color name: Rose Petal	Color code: 368 Color name: Wineberry	Color code: 055 Color name: Adobe	Color code: 022 ● Color name: Burnt Russet	Color code: 322 Color name: Cabernet	Color code: 096 Color name: Cardinal	Color code: 330 Color name: Pueblo
--	---	---	--	--	--	--



Color code: 304 Color name: Rojo Red	Color code: 326 Color name: Copper Canyon	Color code: 071 Color name: Tangerine	Color code: 393 Color name: Tiger Lily	Color code: 027 Color name: Nubuck Suede	Color code: 366 Color name: Caramel	Color code: 065 Color name: Butter
--	---	---	--	--	---	--



Color code: 310 Color name: Lemon Ice	Color code: 362 Color name: Golden Rod
---	--

Urethane Edge Colors

Laminate images are not ideal representations of the laminate product. ESI highly recommends requesting samples from the laminate manufacturer prior to purchase.

More laminate options are available. Please contact our Customer Service Department for more information.

• Matching vinyl edge available

Vibrant colors



Color code: 044 Color name: Harbor Haze	Color code: 363 Color name: Iron Ore	Color code: 398 Color name: Flannel	Color code: 088 ● Color name: Graphite	Color code: 023 ● Color name: French Roast	Color code: 037 Color name: Andesite	Color code: 300 ● Color name: Black
---	--	---	--	--	--	---



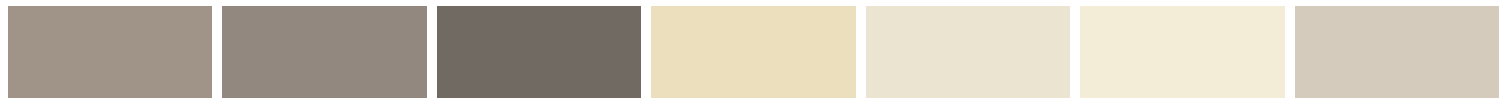
Color code: 371 ● Color name: Putty	Color code: 004 ● Color name: Folkstone	Color code: 349 ● Color name: Dove Grey	Color code: 318 Color name: Cobblestone	Color code: 067 Color name: Victorian Teal	Color code: 316 Color name: River Rock	Color code: 374 Color name: Mallard
---	---	---	---	--	--	---



Color code: 395 ● Color name: Jute	Color code: 006 ● Color name: Brownstone	Color code: 367 ● Color name: Platinum	Color code: 005 Color name: Fog	Color code: 376 ● Color name: Dolphin	Color code: 387 Color name: Innertone Light	Color code: 031 Color name: Basalt
--	--	--	---	---	---	--



Color code: 396 Color name: Charcoal	Color code: 329 Color name: Sweet Maple	Color code: 397 Color name: Pumice	Color code: 391 ● Color name: Just Beige	Color code: 064 Color name: Khaki Brown	Color code: 306 Color name: Sahara	Color code: 007 ● Color name: Pepperdust
--	---	--	--	---	--	--



Color code: 388 Color name: Mortar	Color code: 386 Color name: Innertone	Color code: 039 Color name: Grigio	Color code: 323 ● Color name: Atlantis ● 090 Light Beige	Color code: 392 ● Color name: White Sand	Color code: 352 Color name: Soft White	Color code: 359 Color name: Stone Cliff
--	---	--	---	--	--	---



Color code: 378 Color name: Sand	Color code: 075 Color name: Camel Train	Color code: 303 Color name: Chai Latte	Color code: 038 Color name: Corteza	Color code: 059 Color name: Brown	Color code: 084 Color name: Black Walnut
--	---	--	---	---	--

Urethane Edge Colors

Laminate images are not ideal representations of the laminate product. ESI highly recommends requesting samples from the laminate manufacturer prior to purchase.

More laminate options are available. Please contact our Customer Service Department for more information.

Wood grains



Color code: **090** ●
Color name: Light Beige



Color code: **329**
Color name: Sweet Maple



Color code: **027**
Color name: Nubuck Suede



Color code: **366**
Color name: Caramel



Color code: **085**
Color name: Cherry Wood



Color code: **330**
Color name: Pueblo



Color code: **087**
Color name: Warm Walnut



Color code: **358**
Color name: Port Wine



Color code: **322**
Color name: Cabernet



Color code: **035**
Color name: Rootbeer



Color code: **017**
Color name: Raisin



Color code: **086**
Color name: Mahogany



Color code: **084**
Color name: Black Walnut



Color code: **023** ●
Color name: French Roast



Color code: **300** ●
Color name: Black

- Matching vinyl edge available

Shipping Information

Visit esiergo.com for complete
Terms and Conditions

Shipping

48 hour ship program

ESI offers 48 hour shipping on the majority of products. Unless otherwise requested, these products are shipped from Phoenix, Arizona, within two business days of receiving the PO, depending on quantity ordered and available inventory. Orders that include products with longer lead times including special orders, custom products, or worksurface orders, are designated as "LT" (lead time) and therefore not included in the 48 hour ship program. Large orders may also require additional lead time. Products designated as LT could take up to 90 days ARO for delivery. Call for on-hand availability.

Please note:

1. For the order to qualify for 48 hour shipping, all products on the PO must be available under the 48 hour ship program.
2. POs that include LT designated products will be shipped based on the lead time of the LT designated products unless otherwise requested.
3. 48 hour orders will be shipped out within two business days unless otherwise specified on the PO.

Freight terms

ESI ships orders by way of standard ground carrier service dock-to-dock within the contiguous 48 states. Special requests such as "call before delivery", "delivery lift gate required", residential delivery, re-routed deliveries, or specific delivery date/time requests may be subject to additional charges or may not be available. Contact our Customer Service Department for expedited delivery requests or deliveries outside of the contiguous 48 states.

Customers will be charged additional fees for changes made to orders that have already departed the facility, resulting in re delivery or re-consignment.

ESI accepts requests for expedited freight at the customer's expense. Please contact our Customer Service Department at 800.833.3746 and provide your preferred carrier account number in which to charge the expedited freight.

Worksurfaces are not sold separately and must be purchased with a table base. Worksurfaces may be drop-shipped from a separate location and may arrive on a date different than the other items on the order.

Table bases- Freight is free for orders of five (5) or more table bases or table bases with worksurfaces. A \$125 freight fee will be charged for orders of four (4) or fewer table bases. For orders including worksurfaces, there will be an additional \$150 freight fee.