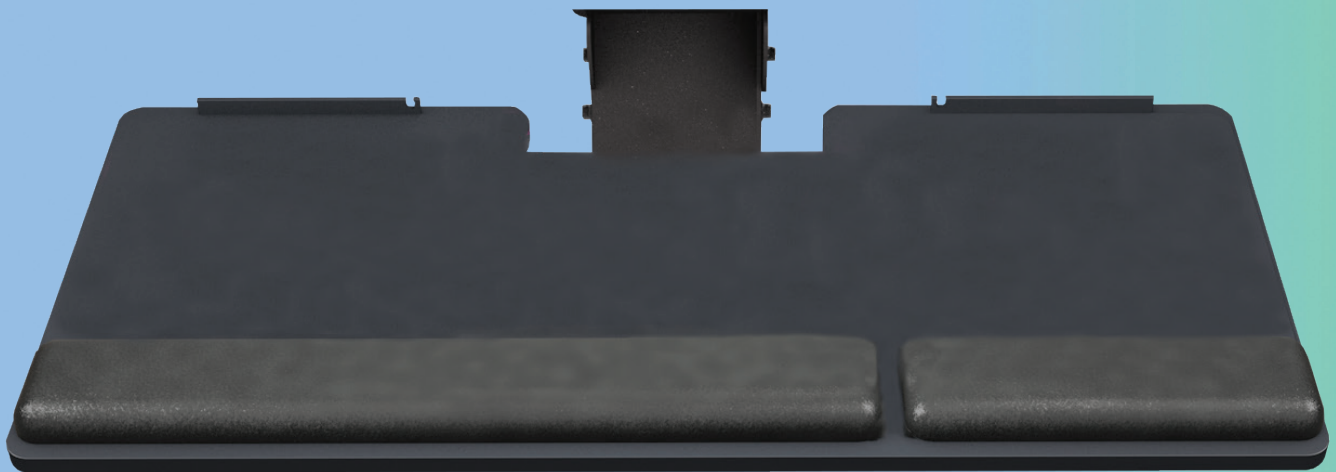


esi | work gear

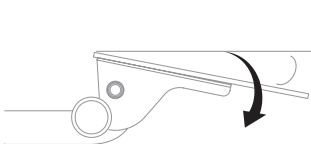
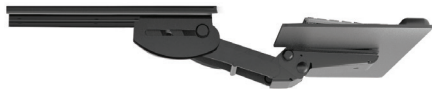


Solution All-Fit

keyboard platform combo

Solution All-Fit

keyboard platform combo



Positive tilt



Negative tilt

Product specs

- Recommended for shallow worksurfaces, or benching applications
- PL003-27N keyboard platform
 - Includes: gel palm rests, mouse pad, mouse guards, cord management clips
 - Made from black 0.3" thin phenolic
- 27.0" keyboard platform with notch
- Designed for benching systems and tables where minimal track space is available
- Accommodates left or right-handed users
- AA100-PTLO articulating arm
- Lift-and-lock height adjustment
- 13.0" glide track
- 13.0" clearance required for full retraction
- +22.6°/-12.4° tilt adjustment
- Optional positive tilt lock-out tab
- 6.0" height adjustment range:
 - 2.4" above track | 3.6" below track
- 360° glide track rotation
- Positions flush with worksurface
- Warranty:
 - 15yr. articulating arm/platform
 - 2yr. palm rest/mouse pad



Model

SOLUTIONALL-FIT

esi

800.833.3746
esiergo.com