

enVision

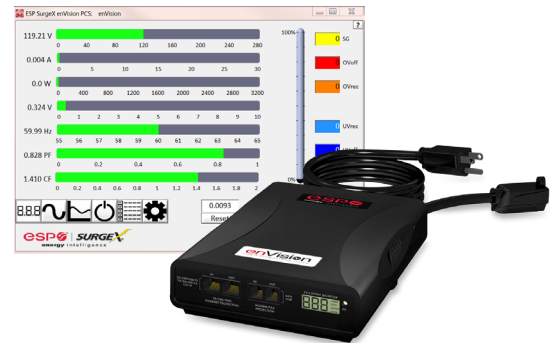
POWER CONDITIONING SYSTEM

Unsurpassed analytics and intelligence Identify power related problems in real-time

The enVision PCS is the ultimate troubleshooting tool for service organizations. Engineered with state-of-the-art power protection, electrical intelligence, diagnostic software, and real-time scope meter technology, ESP's innovative cost-savings solution gives service teams the ability to identify power problems and eliminate unwarranted costs that can impact the profitability of your service department.


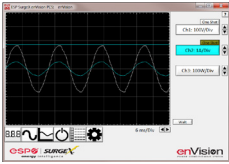


With this innovative tool, integrators can run advanced diagnostics prior to installation and monitor live electrical incidents to ensure equipment stays up and running. It troubleshoots downtime, reduces "no problem found" service costs and parts replacement with more clarity, provides reports to prove electrical anomalies to customers, and removes electrical disturbances.

Featuring extensive diagnostic software and integrated scope meter, the enVision PCS provides the most advanced electrical troubleshooting and protection technology in the industry. Technicians will be able to monitor power disturbances, record events, customize equipment voltage settings, and analyze electrical data via multiple display and communication modules. We've also included ESP's patented Multi-Stage surge and noise protection and added advanced capabilities including Cat 6 network protection and ground fault protection to ensure your serviced equipment receives the highest level of professional-grade protection in the market.



Features:

- Integrated scope meter with diagnostic capabilities
- Ability to identify preexisting power conditions, analyze real-time power anomalies, and generate electrical performance reports
- Lowers service costs, ensures fault-less installs, and improves customer uptime
- Measures neutral to ground voltage, crest factor, power factor, and line frequency metrics
- Records power and energy usage
- Internal battery to provide accurate data and time stamps, even during power outages
- Integrates with multiple communication platforms, including: Zigbee, Cellular, Wi-Fi, and Bluetooth
- Remote portal (sold separately)

| | Model Number | Plug Configuration | | Description |
|--|--------------|---------------------|--|---|
| | | Input | Output | |
|   | EV-12015 IC | NEMA 5-15P | NEMA 5-15R (3x) | Diagnostic Power Conditioning System + Scope Meter, 120V/15A 1 Pigtail + 2 Receptacles, Diagnostic software and interface cord included |
| | EV-12020 IC | NEMA 5-20P | NEMA 5-20R (1x) NEMA 5-15R (2x) | Diagnostic Power Conditioning System + Scope Meter, 120V/20A 1 Pigtail + 2 Receptacles, Diagnostic software and interface cord included |
| | EV-20815 IC | NEMA 6-15P | NEMA 6-15R (1x) | Diagnostic Power Conditioning System + Scope Meter, 208V/15A 1 Pigtail, Diagnostic software and interface cord included |
| | EV-20820 IC | NEMA 6-20P | NEMA 6-20R (1x) | Diagnostic Power Conditioning System + Scope Meter, 208V/20A 1 Pigtail, Diagnostic software and interface cord included |
| | EV-23010 IC | IEC | IEC C13 (2x) | Diagnostic Power Conditioning System + Scope Meter, 230V/10A 1 IEC Plug + 2 IEC Receptacles, Diagnostic software and interface cord included |
|  | RP-IP | 5V, 500mA, USB Mini | (1) RJ45 Server Port | Allows remote IP access to diagnostic software, RJ25 6p6c Standard Pinout |
|  | RP-IP-GNS | 12V, 1A, Barrel | (1) RJ45 Server Port (5) 10/100/1000 Switch Ports | Allows remote IP access to diagnostic software, RJ25 6p6c Standard Pinout |

\$15 billion is lost each year due to power quality issues. Don't let power problems impact your service profitability.

Premium diagnostic technology, improves the capabilities of your service department

Measures:

- Line-Neutral voltage
- Neutral-ground voltage
- Amperage
- Power
- Crest factor
- Power factor
- Line frequency
- Energy usage

Records Events:

- Over/under voltage
- Surges
- Power outages
- Shut off events

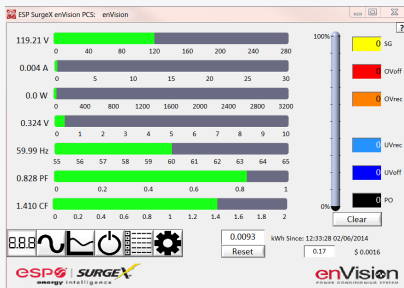
Customizes:

- Over and under voltage
 - Shut off levels
 - Recording levels
 - Restore levels

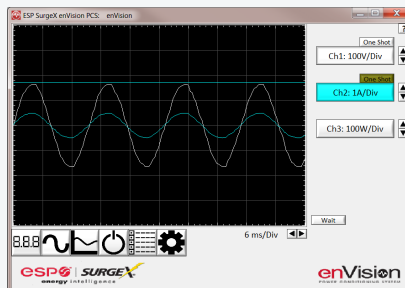
Displays:

- Wiring faults
- Electrical parameters
- Power disturbances and outages
- Abnormal conditions
- Outlet status
- User controls

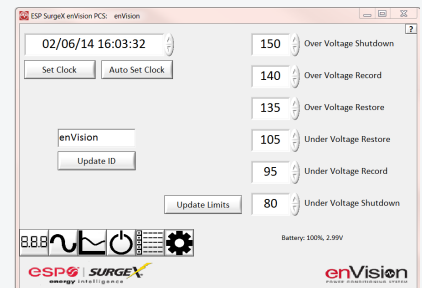
Sophisticated software, gives your service teams a comprehensive troubleshooting solution



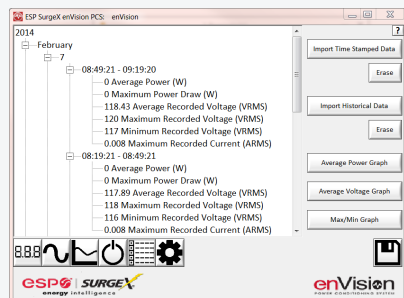
Real-time digital multi-meter



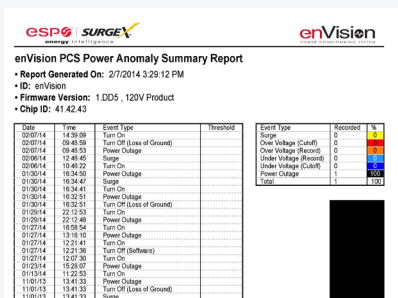
Real-time scope meter



Over/under voltage customization



Historical electrical parameter summary



Time-stamped power anomaly reports

Multiple display and communication modules, puts you in control

- Integrated scope meter
- LCD event notifier and interface on the unit
- Additional communication capabilities available
 - TCP-IP integration

Professional-grade ESP power protection and conditioning system, protects connected equipment

- Multi-Stage Surge Protection
- Electrical Noise Filtration
- Over/Under Voltage Protection
- Cat 6 network protection
- Telephone line protection
- Wiring Fault Protection