

SLB-Series DC Load Banks

Model # SLB-Series



SLB-Series DC Load Bank

Product Overview

Eagle Eye's SMART Constant Current DC Load Banks are designed for discharge testing, battery capacity testing, acceptance testing, battery maintenance and other testing for DC power with a load. The SLB-Series load banks are portable, economic, easy-to-use and come complete with DataView Software for data management and analysis. The SMART technology allows a constant current discharge without the need for any adjustments during the test. With over 35 standard models, the SLB-Series is used in a variety of industries including utilities, telecommunications, UPS, motive power/ forklifts, transportation, CATV, and many more. Custom Solutions are available. Eagle Eye load banks are designed to make discharge testing convenient and easy for any application.

Product Features

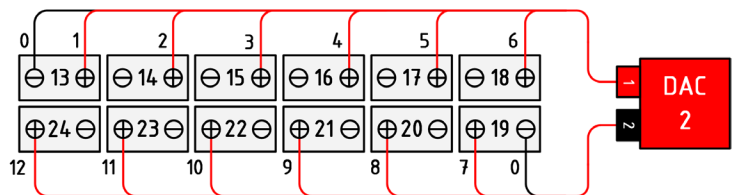
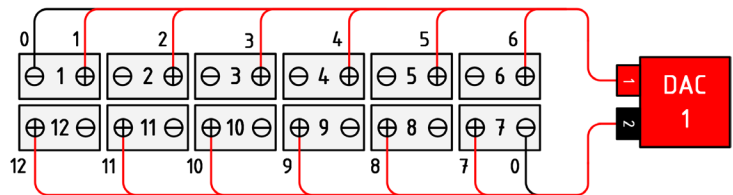
- SMART Constant Current DC Load Banks with system and cell voltage monitoring
- Data management software included for data analyzing and reporting
- Rugged, compact and portable units
- Alloy and PTC resistors for safe discharging
- Four settings for auto shut-down of discharge: discharge time, total string end voltage, cell end voltage, discharged capacity
- Parallel connection of two units for mass discharge testing
- Thermal cut-off and automatic overload protection
- Safe circuits avoid damage to battery when testing
- **Optional:** Real-time display of voltage for each cell with DAC package for 1.2V, 2V, 6V, 12V cells
- **Optional:** Custom DAC packages available for monitoring of uncommon cell voltages and configurations

Data Acquisition Case (DAC):

Eagle Eye's SMART Load Banks come standard with monitoring of the system during discharge. An optional DAC package allows the voltage of EACH CELL to be wirelessly recorded and displayed during discharge. The DAC package allows the user to evaluate the health of each cell and replace only the cells that require replacement - saving time and money by significantly reducing labor hours and replacement costs.



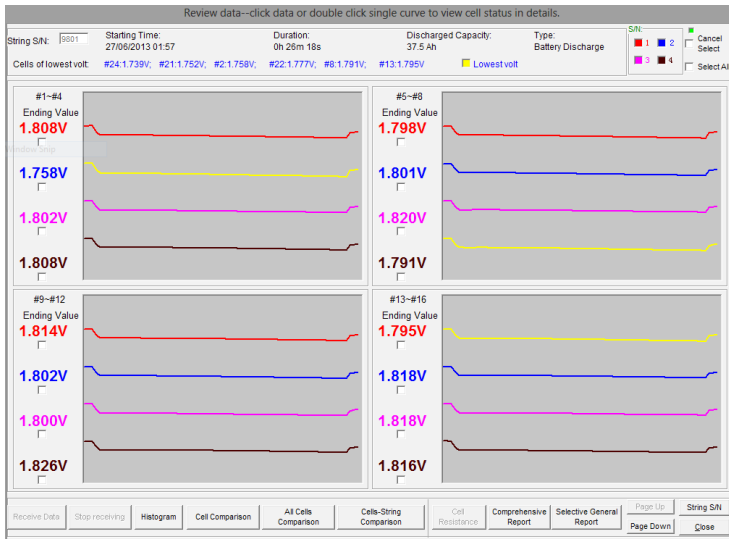
Data Acquisition Case (DAC)



DAC Connection to 48V Battery (2V) Cells

Typical connection of DAC's to the battery cells include a test lead connected to each cell from the DAC. Each DAC can connect up to 12 cells. DAC's are expandable to any size battery system and are compatible with VRLA, VLA, NiCad, and other battery types.

To Order Call Toll Free:
1-877-805-3377



Real-Time Data Logging of Cell Voltage

Discharge DataView Software

The included DataView software allows the user to monitor the discharge test in real-time or import and view tested data from the load bank with the provided USB drive.

Test data can be generated into customized reports with company name, contact, testing location, battery manufacturer, model number, number of cells, and more.

DataView reports provide the test criteria, list of weakest cells, graph of weakest cells, string information, individual cell information, time stamping, discharging graphs and an area to add notes.

Technical Specifications

Cell Voltage:	Standard DAC: 1.2V ¹ , 2V, 6V, 12V / Optional: Custom DAC configurations available upon request
Discharge Current Range:	Single Load: 12 – 600A / Parallel Load: Up to 1200A
Discharge Voltage Range:	Range: 10 – 576V (Max) / Voltage Steps: 12V, 24V, 36V, 48V, 80V, 125V, 240V, 380V, 480V
Accuracy:	Discharge Current: 1% / Voltage: 0.5% – 0.8%
Resolution:	Discharge Current: 0.1 A or 0.5% / Voltage: 0.001 V
Sampling Interval:	5 seconds – 1 minute
Data Transfer:	USB, Wireless (466 MHz)
Display:	Backlit LCD
Operating Environment:	0 – 40 °C (32 – 104 °F)
Power Requirements:	110/220 VAC 50/60 Hz / DC (from connected batteries)
Dimensions:	Small: 400 x 177 x 288 mm (15.7 x 7 x 11.3 in) Medium: 520 x 202 x 355 mm (20.5 x 8 x 14 in) Large: 555 x 225 x 435 mm (22.5 x 8.9 x 17.2 in) X-Large: 603 x 400 x 740 mm (23.7 x 15.7 x 29 in) XX-Large: 762 x 406 x 737 mm (30 x 16 x 29 in)
Weight:	Small: 11 kg (24 lbs) Medium: 16 kg (36 lbs) Large: 21 kg (47 lbs) X-Large: 42 kg (93 lbs) XX-Large: 55 kg (122 lbs)
Safety Standard:	CE Marked, EMC Standard

(1)The standard DAC package includes quantity of DAC's & cabling for 2V/6V/12V batteries; testing of 1.2V NiCad batteries require additional DAC & cabling. Please make sure to note testing of NiCad to your sales rep.

Kit Includes

- SLB-Series Load Bank
- DataView Management Software
- Carrying Case (for small & medium size models)
- Set of 3m/10ft Load Cables
- 3m/10ft Voltage Test Leads
- PC Comm. Terminal
- USB-RS232 Adapter
- Ground Cable
- AC Power Cord
- USB Drive with Software/ User Manual
- (2) Antenna
- **Optional:** Standard DAC Package
- **Optional:** CT Clamp for Assisted or External Load Testing



Carrying Case

Ordering Information

No.	Model #	Description
1	SLB-Series*	SMART Constant Current DC Load Bank with Monitoring (12-480V, 100-600A) *See next page for listing of model numbers *Add "DAC" after model number for wireless monitoring per cell



To Order Call Toll Free:
1-877-805-3377

SLB-Series Standard Models

		Maximum Discharge Current At:									
	Model	12VDC	24VDC	28VDC	36VDC	48VDC	80VDC	125VDC	240VDC	380VDC	480VDC
1	SLB-24-300	~	300	~	~	~	~	~	~	~	~
2	SLB-24-400	200	400	~	~	~	~	~	~	~	~
3	SLB-24-500	250	500	~	~	~	~	~	~	~	~
4	SLB-24/36-100	50	100	77.7	100	~	~	~	~	~	~
5	SLB-24/36-300	150	300	233.3	300	~	~	~	~	~	~
6	SLB-24/36/48-300	150	300	233.3	300	300	~	~	~	~	~
7	SLB-24/36/48/80-200	~	200	~	200	200	200	~	~	~	~
8	SLB-24/48-200	~	200	~	200	~	~	~	~	~	~
9	SLB-24/48-300	150	300	175	225	300	~	~	~	~	~
10	SLB-24/48-300/600	150	300	350	450	600	~	~	~	~	~
11	SLB-24/48-600	300	600	350	450	600	~	~	~	~	~
12	SLB-28-100	40	80	100	~	~	~	~	~	~	~
13	SLB-28-150	60	120	150	~	~	~	~	~	~	~
14	SLB-28-300	120	240	300	~	~	~	~	~	~	~
15	SLB-28-500	200	400	500	~	~	~	~	~	~	~
16	SLB-48-100	~	~	~	~	100	~	~	~	~	~
17	SLB-48-150	~	~	~	~	150	~	~	~	~	~
18	SLB-48-300	~	~	~	~	300	~	~	~	~	~
19	SLB-48-400	~	~	~	~	400	~	~	~	~	~
20	SLB-48-500	125	250	290	375	500	~	~	~	~	~
21	SLB-48/125-100	25	50	58	75	100	64	100	~	~	~
22	SLB-48/125-200	50	100	116	150	200	128	200	~	~	~
23	SLB-48/125-300	75	150	174	225	300	192	300	~	~	~
24	SLB-48/240-100	25	50	58	75	100	33	52	100	~	~
25	SLB-10-288v-200A	50	100	116	150	200	50	75	150	~	~
26	SLB-80-100	15	30	35	45	60	100	~	~	~	~
27	SLB-80-200	30	60	70	90	120	200	~	~	~	~
28	SLB-125-100	~	~	~	~	~	~	100	~	~	~
29	SLB-125-200	19	38	44	57	76	128	200	~	~	~
30	SLB-125-300	29	57	67	86	11.5	192	300	~	~	~
31	SLB-125-400	38	76	89	115	153	256	400	~	~	~
32	SLB-125/240-100	9.6	19	22	29	38	64	100	100	~	~
33	SLB-125/240-150	14	30	33.4	43	60	96	150	150	~	~
34	SLB-240-150	8	15	17.5	23	30	50	78	150	~	~
35	SLB-240-200	~	~	~	~	~	~	~	200	~	~
36	SLB-380-50	~	~	~	~	~	~	~	~	50	~
37	SLB-380-100	~	~	~	~	~	~	~	~	100	~
38	SLB-480-100	2.5	5	5.8	7.5	10	16.6	26	50	79	100

*Custom models available upon request

SLB-SERIES

SMART DC Load Banks