

## LB-Series Constant Current DC Load Banks (1 – 600V, 0 – 2000A)



LB-Series CC Load Bank

### Product Overview

Eagle Eye's LB-Series Constant Current DC Load Banks are designed for discharge testing, battery capacity testing, acceptance testing, battery maintenance, and other testing of DC systems. The LB-Series Constant Current Load Banks are portable, economic, reliable and user-friendly. With over (100) standard models and an operating range of 5 – 600V / 0 – 2000A. The intelligent technology allows a constant current discharge without the need for any adjustments during the test. The LB-Series is essential in a variety of industries including utilities, telecommunications, UPS, motive power / forklifts, transportation, CATV, and many more.

### Product Features

- LED display for voltage, current, and test duration
- Three test conditions for discharge auto-stop: Test Time, End Voltage, Exceeded Capacity, and Cell Voltage\*
- Unit will alarm and end discharge in the event of overheating, abnormal disconnection of battery, and improper polarity detected
- Cooling fans continue to run automatically after each test to ensure maximum heat protection
- Previously used parameters saved after powering off the machine
- Optional models include: programmable load steps, cell monitoring, software package, and 5" LCD with touchpad
- Optional Software includes reporting to Microsoft Excel, Word, data graphs, remote load control, and more

### D & S Models

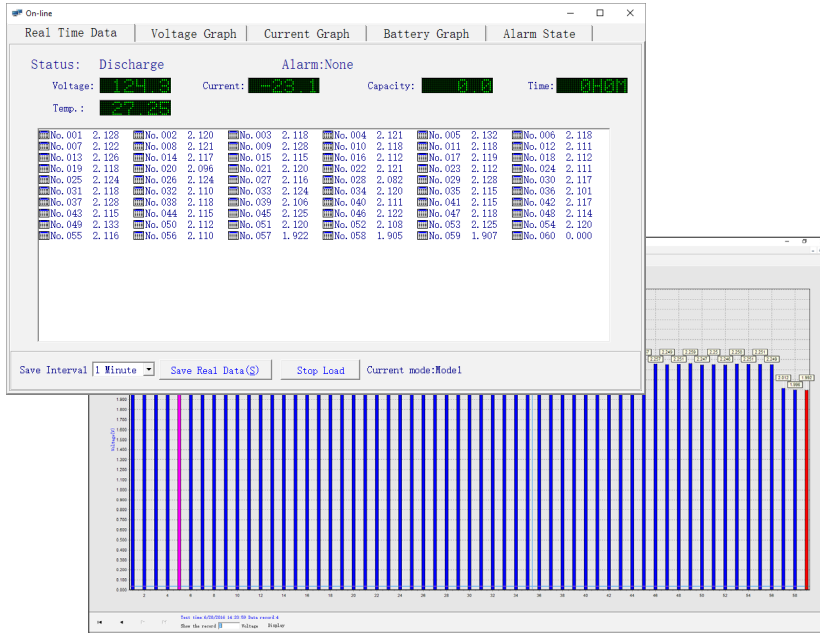
In addition to the base CC model, we offer (2) additional model packages that incorporate added features to suit the full range of our customer needs. These advanced models provide the standard CC features Plus Data Management Software, Per Cell Monitoring, LCD Screen, Data Storage, and Programmable Load Steps. See model chart on page 3 for details.



Cell Monitoring Harnesses

### Model Options

Features:	CC	CCD	CCS
Autosave Test Parameters	✓	✓	✓
Adjustable Discharge Current	✓	✓	✓
Voltage Auto-Sensing	✓	✓	✓
Internal Data Saving		✓	✓
5" LCD with Touchpad		✓	✓
Data Management Software		✓	✓
Remote Load Control		✓	✓
Programmable Load Steps		✓	✓
Parallel Load		✓	✓
PER Cell Monitoring			✓



Real-Time Data of Discharge Event

### Data Management Software

Eagle Eye's comprehensive software package enables users to monitor discharge events in real time, record data, analyze, remote start & stop tests, and create reports. Reports are exported to Microsoft Excel or Word and can be customized by the user to add company name, location, battery details, and more. Both the raw test data values are available, along with visual graphs for viewing both per cell and string information. Information includes per cell voltages, string voltages, and discharge current from each user-selected data interval. Intervals can be set to as low as every 3 seconds, depending on your test length.

Technical Specifications	
<b>Discharge Voltage Range:</b>	Range: 5 – 600V (Auto-Sensing)
<b>Discharge Current Range:</b>	1 – 2000A
<b>Per Cell Voltage Type:</b>	1 – 12V VRLA, VLA, NiCad, and more
<b>Accuracy:</b>	Discharge Current: 0.1A / Voltage: 0.1V
<b>Resolution:</b>	Discharge Current: ±0.2A / Voltage: ±0.3%V
<b>Data Transfer:</b>	RS-232, USB
<b>Display:</b>	Backlit numeric LED (CC) / 5" backlit LCD (D/S)
<b>Operating Environment:</b>	0 – 40 °C (32 – 104 °F)
<b>Power Requirements:</b>	110/220 VAC 50/60 Hz
<b>Dimensions:</b>	Small: 42 x 52 x 25 cm (16.5 x 20.5 x 9.8 in) Medium: 42 x 30 x 58 cm (16.5 x 11.8 x 22.8 in) Large: 48 x 30 x 65 cm (18.9 x 11.8 x 25.6 in) X-Large: 60 x 40 x 70 cm (23.6 x 15.7 x 27.5 in) XX-Large: 90 x 62 x 115 cm (35.4 x 24.4 x 45.2 in) XXX-Large: 145 x 90 x 87 cm (157 x 35.4 x 34.2 in)
<b>Weight:</b>	Small: 22 kg (49 lbs) Medium: 26 kg (57 lbs) Large: 34 kg (75 lbs) X-Large: 54 kg (119 lbs) XX-Large: 170 kg (375 lbs) XXX-Large: 300 kg (662 lbs) *Sizes may vary from listed depending on model

### Kit Includes

- LB-Series CC Load Bank
- 3 m (10 ft) Discharge Cables
- 110/220 AC Power Cable
- One-year Standard Warranty
- USB with Support Literature
- Optional: Software Package
- Optional: Cell Monitoring
- Optional: Programmable Load Steps

### Ordering Information

No.	Model #	Description
1	LB-CC*	*See next page for listing of model numbers *Add "D" or "S" after model number for ordering advanced models (See model comparison table above for details)



To Order Call Toll Free:  
**1-877-805-3377**

# LB-CC Series Discharge Specifications

*\*Custom models available upon request*

		Maximum Discharge Current At:										
No	Model	12VDC	24VDC	28VDC	36VDC	48VDC	72VDC	80VDC	120VDC	240VDC	380VDC	480VDC
1	LB-12/24-400-CC	400	400	--	--	--	--	--	--	--	--	--
2	LB-12/24-600-CC	600	600	--	--	--	--	--	--	--	--	--
3	LB-24/48-400-CC	200	400	233	300	400	--	--	--	--	--	--
4	LB-24/36/48-50/75/100-CC	25	50	58	75	100	--	--	--	--	--	--
5	LB-24/36/48-100/150/200-CC	50	100	116	150	200	--	--	--	--	--	--
6	LB-24/36/48-150/225/300-CC	75	150	175	225	300	--	--	--	--	--	--
7	LB-24/36/48-200/300/400-CC	100	200	233	300	400	--	--	--	--	--	--
8	LB-24/36/48-250/375/500-CC	125	250	291	375	500	--	--	--	--	--	--
9	LB-24/36/48-300/450/600-CC	150	300	350	450	600	--	--	--	--	--	--
10	LB-48-100-CC	25	50	58	75	100	--	--	--	--	--	--
11	LB-48-200-CC	50	100	116	150	200	--	--	--	--	--	--
12	LB-48-300-CC	75	150	175	225	300	--	--	--	--	--	--
13	LB-48-400-CC	100	200	233	300	400	--	--	--	--	--	--
14	LB-48-500-CC	125	250	291	375	500	--	--	--	--	--	--
15	LB-48-600-CC	150	300	350	450	600	--	--	--	--	--	--
16	LB-48-800-CC	200	400	466	600	800	--	--	--	--	--	--
17	LB-48-1000-CC	250	500	583	750	1000	--	--	--	--	--	--
18	LB-48-2000-CC	500	1000	1166	1500	2000	--	--	--	--	--	--
19	LB-48/125-100-CC	25	50	58	75	100	57	64	100	--	--	--
20	LB-48/125-200-CC	50	100	116	150	200	115	128	200	--	--	--
21	LB-48/125-300-CC	75	150	175	225	300	172.5	192	300	--	--	--
22	LB-80-100-CC	15	30	35	45	60	90	100	--	--	--	--
23	LB-80-300-CC	45	90	105	135	180	270	300	--	--	--	--
24	LB-80-500-CC	75	150	175	225	300	450	500	--	--	--	--
25	LB-125-100-CC	9.6	19	22	28.5	38	57.5	64	100	--	--	--
26	LB-125-200-CC	19	38	44	57	76	115	128	200	--	--	--
27	LB-125-300-CC	28	57	67	86	115	172.5	192	300	--	--	--
28	LB-125-400-CC	38	76	89	115	153	230	256	400	--	--	--
29	LB-125-500-CC	48	96	112	142.5	192	288	320	500	--	--	--
30	LB-125-600-CC	57	115	134	172	230	345	384	600	--	--	--
31	LB-240-300-CC	15	30	35	45	60	90	100	150	300	--	--
32	LB-240-500-CC	28	55	65	83	111	167	185	278	500	--	--
33	LB-480-100-CC	2.5	5	5.5	7.5	10	15	16.5	26	50	79	100
34	LB-480-200-CC	5	10	11	15	20	30	33	52	100	158	200
35	LB-480-300-CC	7.5	15	17	22.5	30	45	50	78	150	237	300
36	LB-24/48/120/135/245/480-200-CC	100	200	116	150	200	120	133	200	200	158	200
37	LB-24/135/270/480-400-CC	200	400	92	118	158	237	263	400	400	351	400
38	LB-24/135/270/480-750-CC	375	750	172	222	296	444	493	750	750	659	750
39	LB-48/125/240/480-400-CC	100	200	233	300	400	240	266	400	400	316	400
40	LB-48/125/240/480-750-CC	107	375	437	562	750	450	500	750	750	593	750

**LB-SERIES**

Constant Current DC Load Banks