

## SLB-Series DC Load Banks (10-576V, 0-1200A)

SLB-SERIES

SMART DC Load Banks



SLB-Series DC Load Bank

### Product Overview

Eagle Eye's SMART Constant Current DC Load Banks are designed for discharge testing, battery capacity testing, acceptance testing, battery maintenance and other testing for DC power with a load. The SLB-Series load banks are portable, economic, easy-to-use and come complete with DataView Software for data management, analysis, and Microsoft Excel reporting. The SMART technology allows a constant current discharge without the need for any adjustments during the test. With over (75) standard models and an operating range of 10-576V / 0-1200A, the SLB-Series is used in a variety of industries including utilities, telecommunications, UPS, motive power/forklifts, transportation, CATV, and many more. Custom Solutions are available. Eagle Eye load banks are designed to make discharge testing convenient and easy for any application.

### Product Features

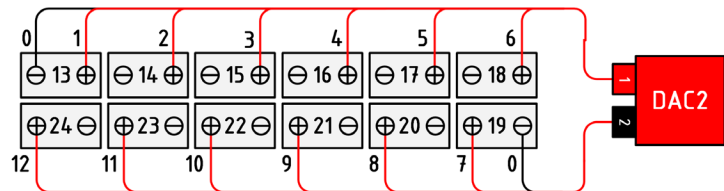
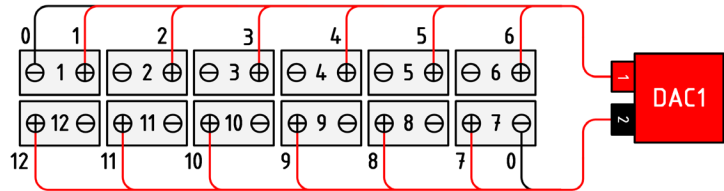
- SMART Constant Current DC Load Banks with system and cell/unit voltage monitoring
- Data management software included for data analyzing with exporting to Microsoft Excel for report generation
- Four settings for auto shut-down of discharge: discharge time, total string end voltage, cell end voltage, discharged capacity
- Parallel connection of two units for increased discharge capacity
- Thermal cut-off and automatic overload protection
- **Optional:** Real-time display of voltage for each cell/unit with DAC package for 1.2V, 2V, 6V, 12V cells
- **Optional:** Custom DAC packages available for monitoring of uncommon cell voltages and configurations

### Data Acquisition Case (DAC):

Eagle Eye's SMART Load Banks come with an optional DAC package allowing the voltage of EACH CELL to be wirelessly recorded and displayed during discharge. The DAC package allows the user to evaluate the health of each cell and replace only the cells that require replacement - saving time and money by significantly reducing labor hours and replacement costs.

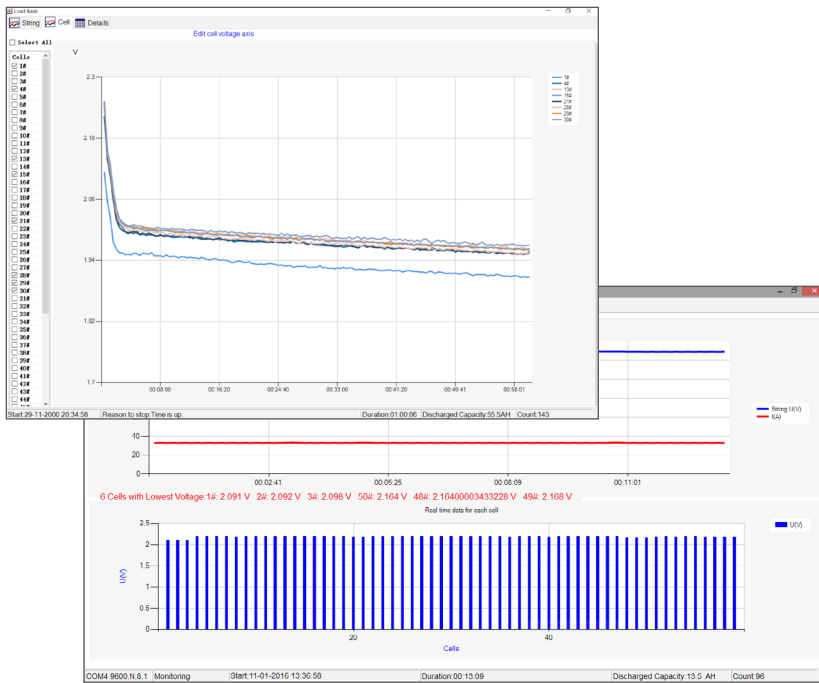


Data Acquisition Case (DAC)



DAC Connection to 48V Battery (2V) Cells

Typical connection of DAC's to the battery cells include a test lead connected to each cell from the DAC. Each DAC can connect up to 12 cells. DAC's are expandable to any size battery system and are compatible with VRLA, VLA, NiCad, and other battery types.



Real-Time Data Logging of Cell Voltage

## Discharge DataView Software

The included DataView software allows the user to monitor the discharge test in real-time or import and view tested data from the load bank with the provided USB drive. View and print a detailed histogram of each cell's voltage at any point during the discharge test at user defined intervals of 15, 30, or 60 minutes.

Recorded data exports directly to Microsoft Excel. Users are able to customize the report with company name and location as well as input battery information including battery make, cell type, rated capacity, and more. The complete test criteria, weakest cells, string information, and individual cell information are included in the report. Graphs for string, and cells are also available to view in the software.

Technical Specifications	
<b>Cell Voltage:</b>	Standard DAC: 1.2V <sup>1</sup> , 2V, 6V, 12V / Optional: Custom DAC configurations available upon request
<b>Discharge Current Range:</b>	Single Load: 12 – 600A / Parallel Load: Up to 1200A
<b>Discharge Voltage Range:</b>	Range: 10 – 576V (Max) / Voltage Steps: 12V, 24V, 36V, 48V, 80V, 125V, 240V, 380V, 480V
<b>Accuracy:</b>	Discharge Current: 1% / Voltage: 0.5% – 0.8%
<b>Resolution:</b>	Discharge Current: 0.1 A or 0.5% / Voltage: 0.001 V
<b>Sampling Interval:</b>	5 seconds – 1 minute
<b>Data Transfer:</b>	USB, Wireless (466 MHz)
<b>Display:</b>	Backlit LCD
<b>Operating Environment:</b>	0 – 40 °C (32 – 104 °F)
<b>Power Requirements:</b>	110/220 VAC 50/60 Hz / DC (from connected batteries)
<b>Dimensions:</b>	Small: 400 x 177 x 288 mm (15.7 x 7 x 11.3 in) Medium: 520 x 202 x 355 mm (20.5 x 8 x 14 in) Large: 555 x 225 x 435 mm (22.5 x 8.9 x 17.2 in) X-Large: 603 x 400 x 740 mm (23.7 x 15.7 x 29 in) XX-Large: 762 x 406 x 737 mm (30 x 16 x 29 in)
<b>Weight:</b>	Small: 11 kg (24 lbs) Medium: 16 kg (36 lbs) Large: 21 kg (47 lbs) X-Large: 42 kg (93 lbs) XX-Large: 55 kg (122 lbs)

(1)The standard DAC package includes quantity of DAC's & cabling for 2V/6V/12V batteries; testing of 1.2V NiCad batteries require additional DAC & cabling. Please make sure to note testing of NiCad to your sales rep.

## Kit Includes

- SLB-Series Load Bank
- DataView Management Software
- Carrying Case (for small & medium size models)
- Set of 3m/10ft Load Cables
- 3m/10ft Voltage Test Leads
- PC communication interface
- Ground Cable
- AC Power Cord
- USB Drive with Software/ User Manual
- (2) Antenna
- **Optional:** Standard DAC Package
- **Optional:** CT Clamp for Assisted or External Load Testing
- **Optional:** Parallel Load Cable

## Ordering Information

No.	Model #	Description
1	SLB-Series*	SMART Constant Current DC Load Bank with Monitoring (12-480V, 100-600A) *See next page for listing of model numbers *Add "DAC" after model number for wireless monitoring per cell



To Order Call Toll Free:  
**1-877-805-3377**

# SLB-Series Standard Models

*\*Custom models available upon request*

**SLB-SERIES**

SMART DC Load Banks

No	Model	Maximum Discharge Current At:									
		12VDC	24VDC	28VDC	36VDC	48VDC	80VDC	125VDC	240VDC	380VDC	480VDC
1	SLB-12/24-400	400	400	--	--	--	--	--	--	--	--
2	SLB-24-300	--	300	--	--	--	--	--	--	--	--
3	SLB-24-400	200	400	--	--	--	--	--	--	--	--
4	SLB-24-500	250	500	--	--	--	--	--	--	--	--
5	SLB-24/36-100	50	100	77.7	100	--	--	--	--	--	--
6	SLB-24/36-300	150	300	233.3	300	--	--	--	--	--	--
7	SLB-24/36/48-300	150	300	233.3	300	300	--	--	--	--	--
8	SLB-24/36/48/80-200	--	200	--	200	200	200	--	--	--	--
9	SLB-24/48-200	--	200	--	200	--	--	--	--	--	--
10	SLB-24/48-300	150	300	175	225	300	--	--	--	--	--
11	SLB-24/48-300/600	150	300	350	450	600	--	--	--	--	--
12	SLB-24/48-600	300	600	350	450	600	--	--	--	--	--
13	SLB-28-100	40	80	100	--	--	--	--	--	--	--
14	SLB-28-150	60	120	150	--	--	--	--	--	--	--
15	SLB-28-300	120	240	300	--	--	--	--	--	--	--
16	SLB-28-500	200	400	500	--	--	--	--	--	--	--
17	SLB-48-150	--	--	--	--	150	--	--	--	--	--
18	SLB-48-300	75	150	175	225	300	--	--	--	--	--
19	SLB-48-400	--	--	--	--	400	--	--	--	--	--
20	SLB-48-500	125	250	290	375	500	--	--	--	--	--
21	SLB-48/125-100	25	50	58	75	100	64	100	--	--	--
22	SLB-48/125-200	50	100	116	150	200	128	200	--	--	--
23	SLB-48/125-300	75	150	174	225	300	192	300	--	--	--
24	SLB-48/240-100	25	50	58	75	100	33	52	100	--	--
25	SLB-10-288v-200A	50	100	116	150	200	50	75	150	--	--
26	SLB-80-100	15	30	35	45	60	100	--	--	--	--
27	SLB-80-200	30	60	70	90	120	200	--	--	--	--
28	SLB-125-100	--	--	--	--	--	--	100	--	--	--
29	SLB-125-200	19	38	44	57	76	128	200	--	--	--
30	SLB-125-300	29	57	67	86	115	192	300	--	--	--
31	SLB-125-400	38	76	89	115	153	256	400	--	--	--
32	SLB-125-500	--	96	112	144	192	320	500	--	--	--
33	SLB-125/240-100	9.6	19	22	29	38	64	100	100	--	--
34	SLB-125/240-150	14	30	33.4	43	60	96	150	150	--	--
35	SLB-240-150	8	15	17.5	23	30	50	78	150	--	--
36	SLB-240-200	10	20	23	30	40	66	104	200	--	--
37	SLB-380-50	--	--	--	--	--	--	--	--	50	--
38	SLB-380-100	--	--	--	--	--	--	--	--	100	--
39	LB-480-100	2.5	5	5.8	7.5	10	16.6	26	50	79	100