

**CABLE  
WIRE ROPE  
CHAIN &  
BAR CUTTERS**

HCC AND CC-SERIES  
**HYDRAULIC  
CUTTERS**

For Your Industrial Cutting Needs



**SIMPLEX®**

# CABLE CUTTERS

HCC Series - Cable Cutters

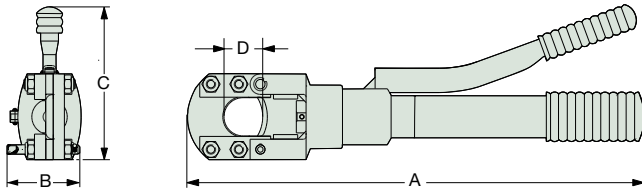


Shown (from top to bottom): HCCS4750, HCCP3000, HCCD2375, HCCS0070, HCCP0070

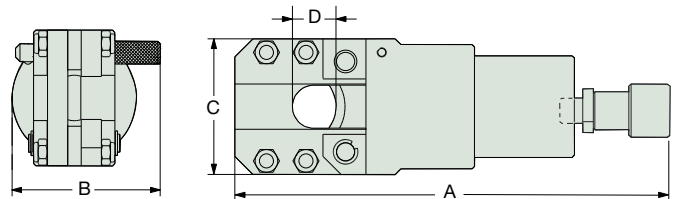
Capacity Range .....▶ 7.9 - 43.8 tons  
 Cable / Wire Rope Range .....▶ 0.71 - 4.72 in.  
 Weight .....▶ 4.4 - 61.7 lbs.  
 Maximum Pressure .....▶ 10,150 psi

- ▶ Quickly and easily cut through cable and wire rope.
- ▶ HCCP models feature an integrated pump for no hassle cutting without an external pump or power supply.
- ▶ HCCS and HCCD models are powered by an external pump, for faster cutting on tougher jobs.
- ▶ HCCS and HCCP models feature a spring-return cylinder for quick and economical performance.
- ▶ HCCD models feature a double-acting cylinder for increased cutting control.
- ▶ All models come complete with a carrying case.

## HCCP-Series



## HCCS\* and HCCD Series



\* HCCS models feature one 3/8" NPT female coupler, HCCD model features two 3/8" NPT female couplers

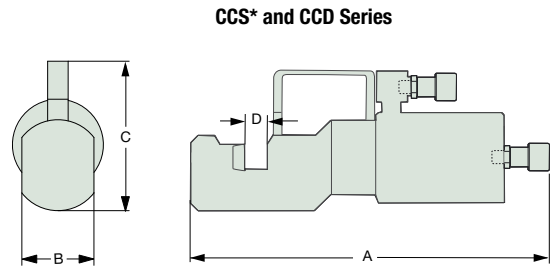
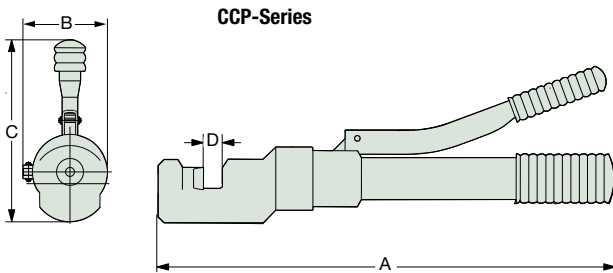
Model	Capacity (ton)	Dimensions (in)				Weight (lbs)	Cable (in)			Wire Rope (in)	
		A	B	C	D		Lead	Under-ground	Telephone	Steel	Aluminum
		Length	Width	Height	Max. Jaw Opening						
HCCP0070	7.9	15.2	2.6	5.6	0.8	6.2	0.71	0.71	0.71	0.71	0.71
HCCP3000		25.6	3.1	7.8	3.0	14.6	2.95	2.95	2.95	NR*	1.57
HCCS0070		8.7	2.6	2.4	0.8	4.4	0.71	0.71	0.71	0.71	0.71
HCCS3000		17.6	3.2	5.0	3.0	12.2	2.95	2.95	2.95	NR*	1.57
HCCS3500	12	20.7	3.2	5.7	3.6	22.0	3.54	3.54	3.54	NR*	1.37
HCCS4750		24.7	3.1	7.2	4.8	25.8	4.72	4.72	4.72	NR*	1.37
HCCP1500	15	19.3	3.1	6.5	1.6	12.4	1.57	1.57	1.57	1.25	1.57
HCCS1500		11.8	3.1	3.6	1.6	11.7	1.57	1.57	1.57	1.25	1.57
HCCS2375	49	16.0	5.5	5.9	2.5	34.8	2.36	2.36	2.36	2.36	2.36
HCCD2375	43.8	19.3	5.5	5.9	2.5	61.7	2.36	2.36	2.36	2.36	2.36

\* These tools are not recommended for these applications



Shown (from top to bottom): CCD0200, CCP0075, CCS0075

- Capacity Range .....▶ 15 - 125 tons
- Chain / Bar Range .....▶ 0.75 - 1.94 in.
- Weight .....▶ 11.3 -176.3 lbs.
- Maximum Pressure .....▶ 10,150 psi
- ▶ Easily cut through chain and metal bar.
- ▶ CCP models feature an integrated pump for no hassle cutting without an external pump or power supply.
- ▶ CCS and CCD models are powered by an external pump, for faster cutting on tougher jobs.
- ▶ CCS and CCP models feature a spring-return cylinder for quick and economical performance.
- ▶ CCD models feature a double-acting cylinder for increased cutting control.
- ▶ All models come complete with a carrying case.



\* CCS models feature one 3/8" NPT female coupler, CCD models feature two 3/8" NPT female couplers

Model	Capacity (ton)	Dimensions (in)				Weight (lbs)	Chain		Bar	
		A	B	C	D		Size	Grade	Size	Tensile Strength
		Length	Width	Height	Max. Jaw Opening		(in)		(in)	(ksi)
<b>CCP0075</b> <b>CCS0075</b> <b>CCD0075</b>	15	19.3	3.0	6.4	0.8	11.3	0.75	43 or less	0.75	102
		11.8	2.6	3.2	0.8	10.5	0.50	80 or less	0.56	145
		13.5	3.2	5.0	0.8	18.5			0.50	203
								0.44	232	
<b>CCS1125</b> <b>CCD1125</b>	43 38	15.5 16.6	4.4	7.2	1.2	37.0 35.0	1.19	43 or less	1.19	102
							0.75	80 or less	1.00	145
							–	–	0.75	203
							–	–	0.63	232
<b>CCD0200</b>	125	19.1	8.2	10.5	2.0	176.3	1.94	43 or less	1.94	102
							1.56	80 or less	1.75	145
							–	–	1.56	203
							–	–	1.38	232

**SIMPLEX Product Lines**

**cylinders**



**hand pumps**



**power pumps**



**accessories**



**bolting**



**lifting jacks**



**hydraulic tools**



**presses**



**mechanical jacks**



**Visit us on the web.**  
**[www.tksimplex.com](http://www.tksimplex.com)**

*Your Enerpac Distributor:*

N86 W12500 Westbrook Crossing  
Menomonee Falls, WI 53051  
Phone (USA): 1.800.323.9114  
Phone (INSIDE / OUTSIDE USA): 1.262.293.1575  
Fax: 1.262.597.1127