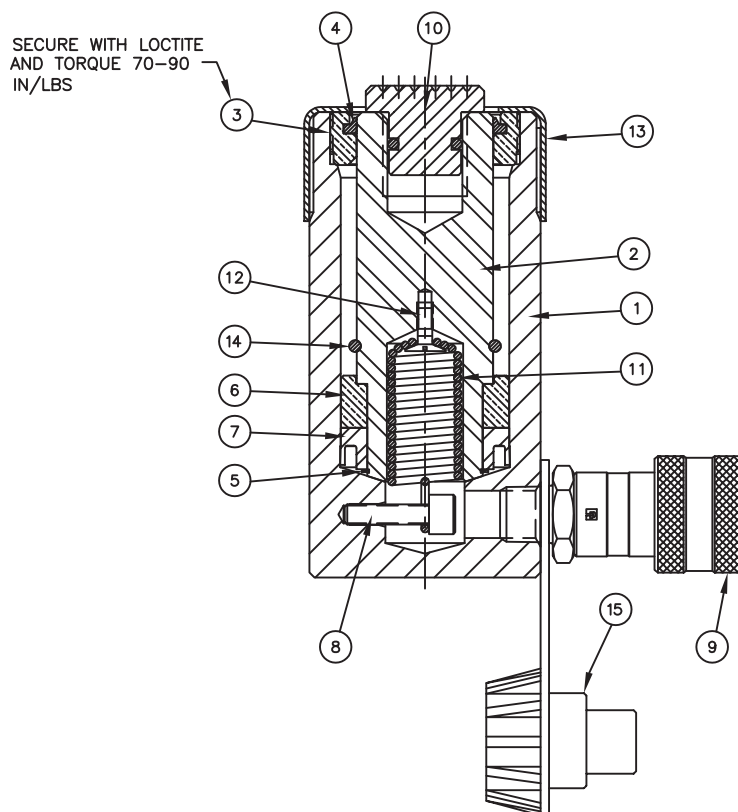




WWW.TKSIMPLEX.COM

TECHNICAL REPAIR PART SHEET R152-R154 Series Cylinders 15 Tons

PART SHEET NUMBER	REVISION NUMBER/LETTER	DATE CODE RANGE	DOCUMENT DATE
54516	E	R152 K0846 AND ABOVE R154 K0846 AND ABOVE	03/15



ITEM #	DESCRIPTION	R152	QTY.	R154	QTY.
1	BASE	N/A	N/A	N/A	N/A
2	PISTON	85904	1	85905	1
3	RETAINING NUT	85911	1	85911	1
4	WIPER	*	1	*	1
5	RETAINING RING	85717	1	85717	1
6	BEARING RING	88978	1	88978	1
7	U-SEAL	*	1	*	1
8	SCREW	6110243	1	6110243	1
9	FEMALE COUPLER	40858	1	40858	1
10	LOAD CAP	18348	1	18348	1
11	SPRING	6110178	1	86156	1
12	SCREW	85729	1	85729	1
13	THREAD PROTECTOR	85924	1	85924	1
14	ROUND RETAINING RING	88969	1	88969	1
15	DUST CAP	CR215	1	CR215	1
N/S	WARNING DECAL	87753	1	87753	1
N/S	SIMPLEX LOGO	88187	1	88186	1
	PACKING KIT (* = COMPONENTS)	54343		54343	



To maintain your warranty:
Have your products inspected and repaired by a SIMPLEX Authorized Service Center.
Visit www.tksimplex.com to locate the nearest one.

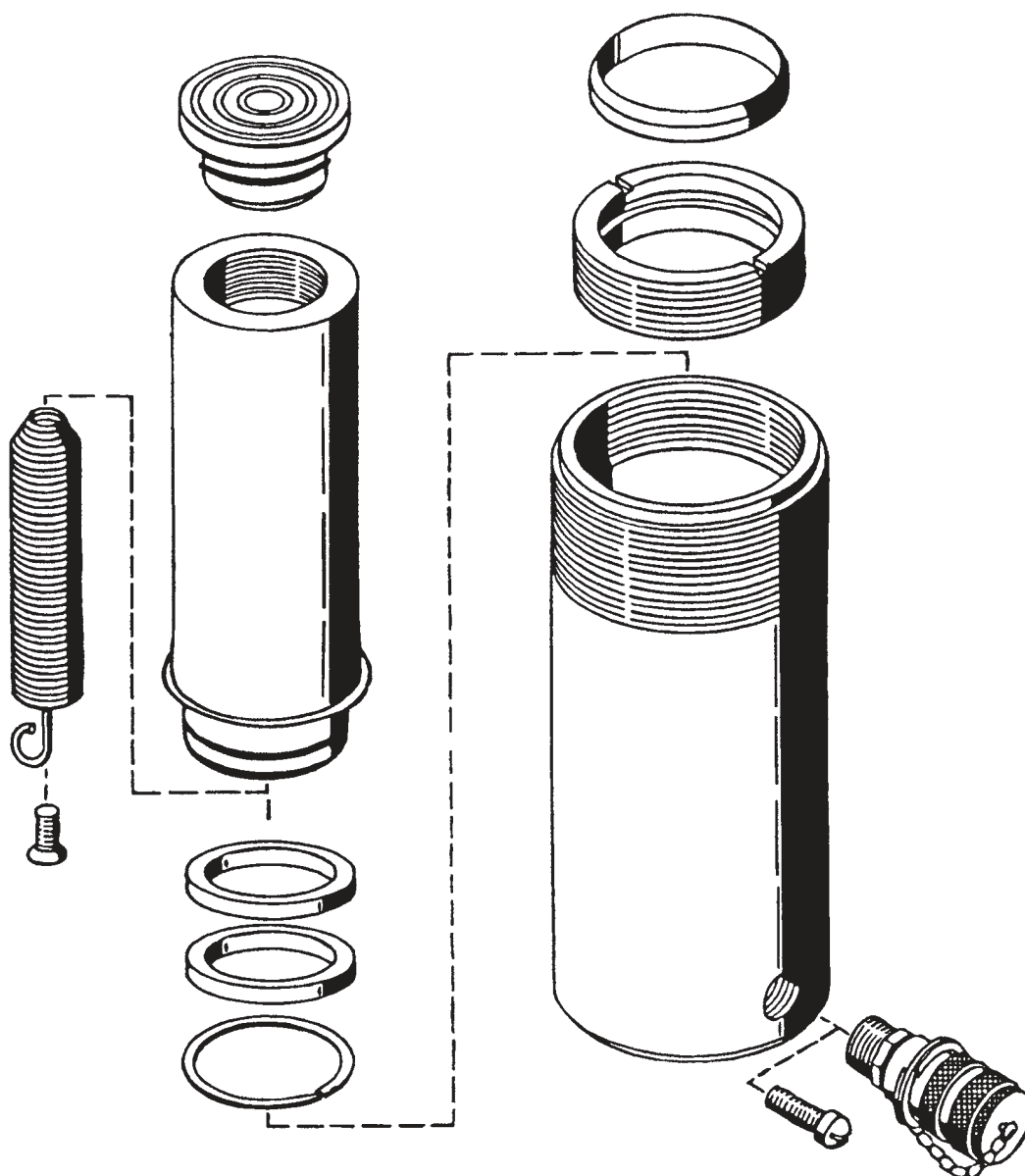




WWW.TKSIMPLEX.COM

TECHNICAL REPAIR PART SHEET
R152-R154 Series Cylinders
15 Tons

PART SHEET NUMBER	REVISION NUMBER/LETTER	DATE CODE RANGE	DOCUMENT DATE
54516	D	R152 K0845 AND BELOW R154 K0845 AND BELOW	01/02



To maintain your warranty:
Have your products inspected and repaired by a **SIMPLEX** Authorized Service Center.
Visit www.tksimplex.com to locate the nearest one.





WWW.TKSIMPLEX.COM

TECHNICAL REPAIR PART SHEET
R152-R154 Series Cylinders
15 Tons

ITEM NO.	DESCRIPTION	QTY	PART NO.	
			R152	R154
1	Housing	N/A	N/A	N/A
2	Piston	1	85904	85905
3	Retaining Nut	1	85911	85911
4	Wiper Ring	1	*	*
5	Retaining Ring	1	85717	85717
6	Bearing Ring	1	88978	88978
7	U-Seal	1	*	*
8	Screw 1/4 - 28 1"	1	83117	83117
9	Ramp Half Coupler	1	18211	18211
10	Load Cap	1	18348	18348
11	Spring	1	85676	86156
12	Screw	1	85729	85729
13	Round Retaining Ring	1	88969	88969
14	Thread Protector	1	85924	85924
	*Packing Kit		54343	54343



To maintain your warranty:
Have your products inspected and repaired by a **SIMPLEX** Authorized Service Center.
Visit www.tksimplex.com to locate the nearest one.

