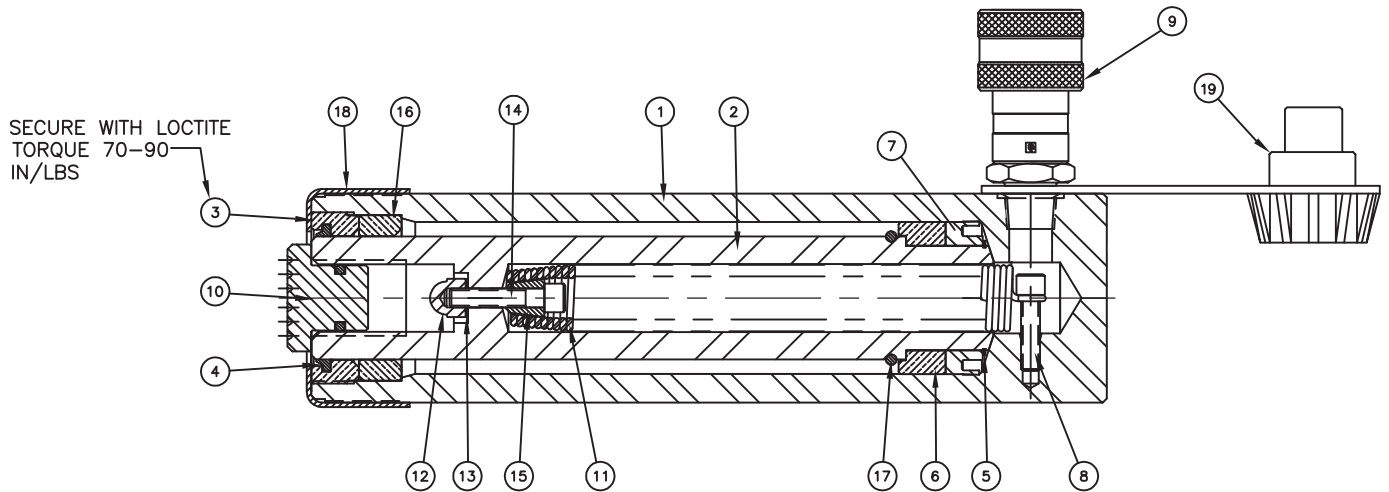




WWW.TKSIMPLEX.COM

TECHNICAL REPAIR PART SHEET  
**R156-R1510-R1514 Series Cylinders**  
**15 Tons**

PART SHEET NUMBER	REVISION NUMBER/LETTER	DATE CODE RANGE	DOCUMENT DATE
54518	E	R156 L0851 AND ABOVE R1510 K0848 AND ABOVE R1514 K0748 AND ABOVE	02/15



ITEM #	DESCRIPTION	R156	QTY.	R1510	QTY.	R1514	QTY.
1	BASE	N/A	1	N/A	1	N/A	1
2	PISTON	85906	1	85908	1	85910	1
3	RETAINING NUT	85911	1	85911	1	85911	1
4	WIPER	*	1	*	1	*	1
5	RETAINING RING	85717	1	85717	1	85717	1
6	BEARING RING	88978	1	88978	1	88978	1
7	U-SEAL	*	1	*	1	*	1
8	SHCS	6110177	1	6110177	1	6110177	1
9	FEMALE COUPLER	40858	1	40858	1	40858	1
10	LOAD CAP	18348	1	18348	1	18348	1
11	SPRING	6110249	1	6110160	1	6110251	1
12	ACORN NUT	6110143	1	6110143	1	6110143	1
13	GASKET	*	1	*	1	*	1
14	SCREW SPEC	6110253	1	6110253	1	6110253	1
15	BUSHING	6110252	1	6110252	1	6110252	1
16	BEARING SLEEVE	85923	1	85923	1	85923	1
17	ROUND RETAINING RING	88969	1	88969	1	88969	1
18	THREAD PROTECTOR	85924	1	85924	1	85924	1
19	DUST CAP	CR215	1	CR215	1	CR215	1
N/S	SIMPLEX LOGO	88165	1	88165	1	88165	1
N/S	WARNING DECAL	80827	1	80827	1	80827	1
	PACKING KIT (* = COMPONENTS)	54343		54343		54343	



To maintain your warranty:  
 Have your products inspected and repaired by an SIMPLEX Authorized Service Center.  
 Visit [www.tksimplex.com](http://www.tksimplex.com) to locate the nearest one.

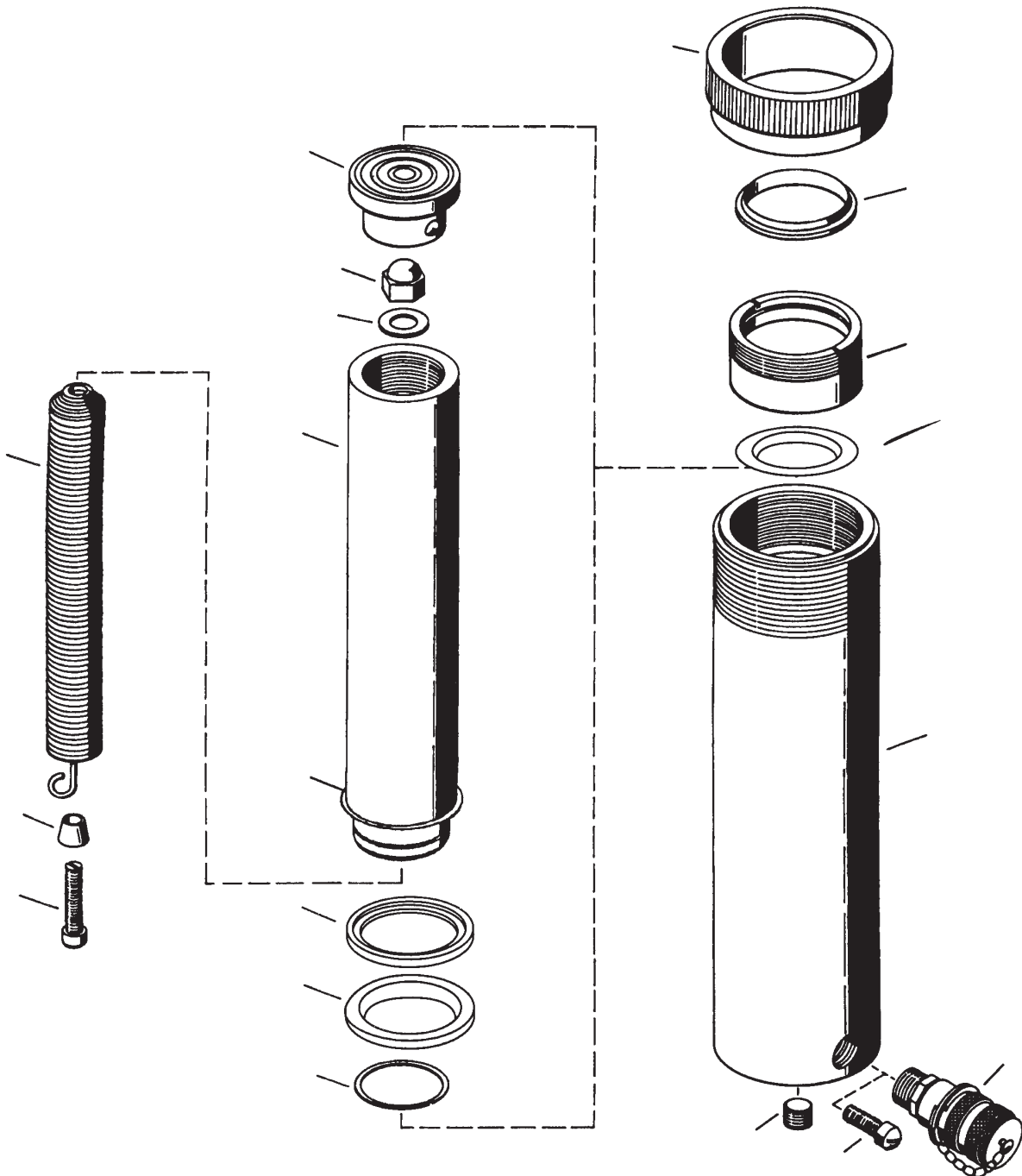


# **SIMPLEX**

WWW.TKSIMPLEX.COM

## TECHNICAL REPAIR PART SHEET R156-R1510-R1514 Series Cylinders 15 Tons

PART SHEET NUMBER	REVISION NUMBER/LETTER	DATE CODE RANGE	DOCUMENT DATE
54518	E	R156 L0850 AND BELOW R1510 K0847 AND BELOW R1514 K0747 AND BELOW	10/01



To maintain your warranty:  
Have your products inspected and repaired by an SIMPLEX Authorized Service Center.  
Visit [www.tksimplex.com](http://www.tksimplex.com) to locate the nearest one.





WWW.TKSIMPLEX.COM

TECHNICAL REPAIR PART SHEET  
R156-R1510-R1514 Series Cylinders  
15 Tons

ITEM NUMBER	DESCRIPTION	QTY.	CONTROL NUMBER		
			R156	R1510	R1514
1	Housing	1	N/A	N/A	N/A
2	Piston	1	85906	85908	85910
3	Retaining Nut	1	85911	85911	85911
4	Wiper Ring	1	*	*	*
5	Retaining Ring	1	85717	85717	85717
6	Bearing Ring	1	88978	88978	88978
7	U-Seal	1	*	*	*
8	Screw	1	83117	83117	83117
9	Ram Half Coupler	1	18211	18211	18211
10	Load Cap Assm.	1	18348	18348	18348
11	Spring	1	86157	86159	86161
12	Cap Nut	1	85712	85712	85712
13	Gasket	1	*	*	*
14	Screw	1	85728	85728	85728
15	Bushing	1	85894	85894	85894
16	Plug	2	93639	93639	93639
17	Thread Protector	1	85924	85924	85924
18	Piston Ret. Ring	1	88969	88969	88969
19	Bearing Sleeve	1	85923	85923	85923
	Packing Kit		54343	54343	54343

\*Items Included  
In Packing Kit.

### ENGINEERING DATA

R156 . . . Capacity 15 Tons @ 9,700 PSI On 3.14 Sq. In. Ram Area. Stroke 6 1/4"  
R1510 . . . Capacity 15 Tons @ 9,700 PSI On 3.14 Sq. In. Ram Area. Stroke 10 1/4"  
R1514 . . . Capacity 15 Tons @ 9,700 PSI On 3.14 Sq. In. Ram Area. Stroke 14 1/4"



To maintain your warranty:  
Have your products inspected and repaired by an SIMPLEX Authorized Service Center.  
Visit [www.tksimplex.com](http://www.tksimplex.com) to locate the nearest one.

