

## Specifications

---

Units:

**Imperial**

Metric

Maximum Operating Pressure (psi)	10,000
Capacity Class (tonnage)	25
Maximum Cylinder Capacity Advance (tons)	25.8
Stroke (in)	12.25
Collapsed Height A (in)	16.75
Extended Height B (in)	29
Return Type	Single-Acting, Spring Return
Plunger Type	Solid
Material	Steel
Cylinder Effective Area Advance (in <sup>2</sup> )	5.16
Oil Capacity Advance (in <sup>3</sup> )	63.18
Surface Treatment	Paint
Coupler	CR400 Coupler
Weight (lbs)	36

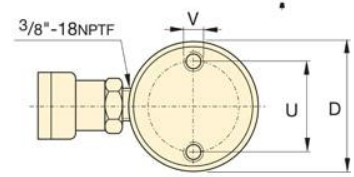
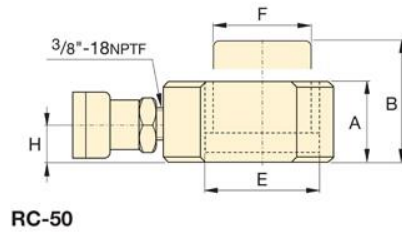
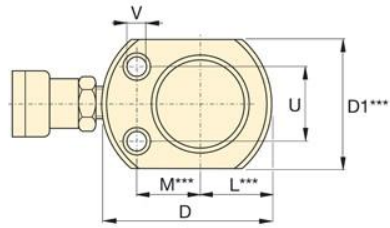
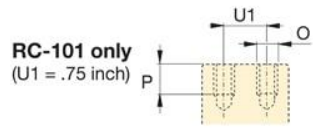
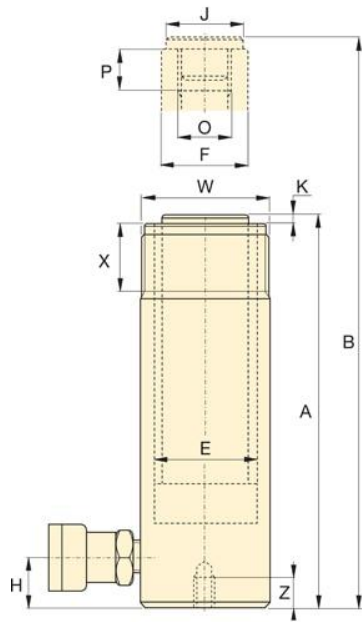
## Dimensions

Units:

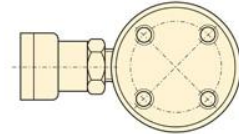
**Imperial**

Metric

Collapsed Height A (in)	16.75
Optional Tilt Saddle Addition To Collapsed Height A1 (in)	0.59
Optional Tilt Saddle Diameter J1 (in)	1.97
Extended Height B (in)	29
Outside Diameter D (in)	3.38
Cylinder Bore Diameter E (in)	2.56
Plunger Diameter F (in)	2.25
Base to Advance Port H (in)	1
Saddle Diameter J1 (in)	1.97
Saddle Protrusion from Plunger K (in)	0.41
Plunger Internal Thread O (in)	1 1/2" - 16
Plunger Thread Length P (in)	1
Saddle Maximum Tilt Angle Radius (degrees)	5
Base Mounting Holes Bolt Circle U (in)	2.31
Base Mounting Holes Thread V	1/2"- 13 un
Collar Thread Size W	3 5/16" - 12 un
Collar Thread W (in)	3 5/16" - 12 UN
Collar Thread Length X (in)	1.94
Base Mounting Holes Thread Depth Z (in)	0.75



**RC-51 to RC-5013 models**



**RC-1006 and RC-10010 models**

Enerpac-RC2512-