

Specifications

Units:

Imperial

Metric

Maximum Operating Pressure (psi)	10,000
Capacity Class (tonnage)	5
Maximum Cylinder Capacity Advance (tons)	4.9
Stroke (in)	0.63
Collapsed Height A (in)	1.63
Extended Height B (in)	2.25
Return Type	Single-Acting, Spring Return
Plunger Type	Solid
Material	Steel
Cylinder Effective Area Advance (in ²)	0.99
Oil Capacity Advance (in ³)	0.62
Surface Treatment	Paint
Coupler	CR400 Coupler
Weight (lbs)	2.2

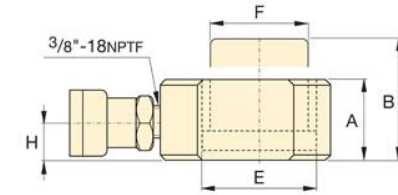
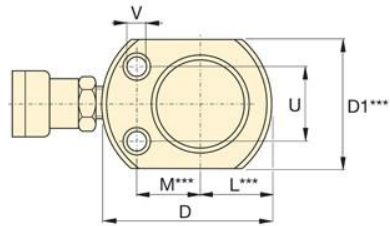
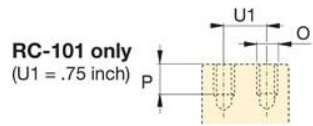
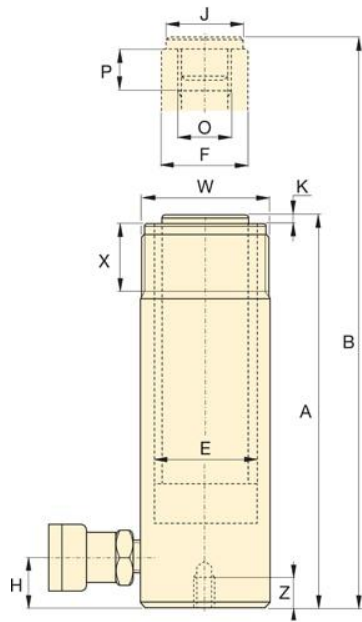
Dimensions

Units:

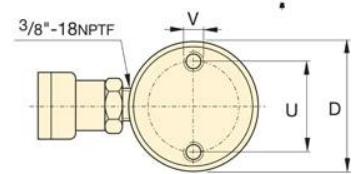
Imperial

Metric

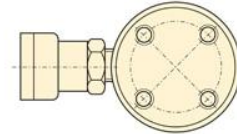
Collapsed Height A (in)	1.63
Extended Height B (in)	2.25
Outside Diameter D (in)	2.31
Cylinder Bore Diameter E (in)	1.13
Plunger Diameter F (in)	1
Base to Advance Port H (in)	0.75
Plunger Internal Thread O (in)	'-
Base Mounting Holes Bolt Circle U (in)	1.13
Base Mounting Holes Thread V	5,6 mm
Collar Thread Size W	'-
Collar Thread W (in)	'-
Collar Thread Length X (in)	'-
Base Mounting Holes Thread Depth Z (in)	'-



RC-50



RC-51 to RC-5013 models



RC-1006 and RC-10010 models

Enerpac-RC50-