

# Specifications

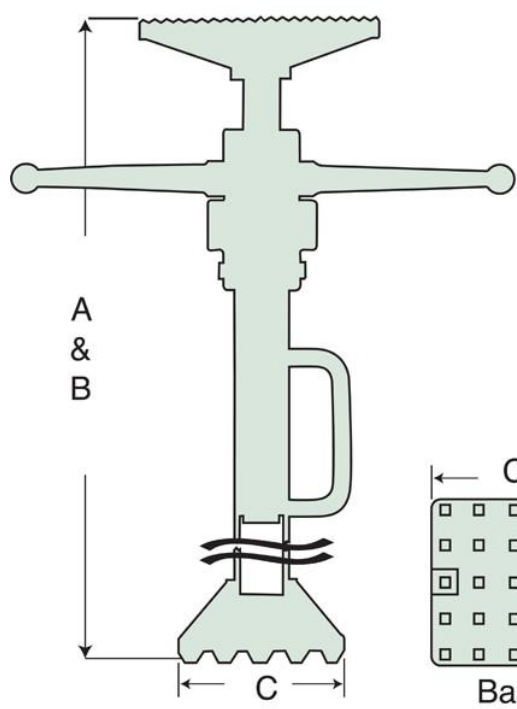
Units: **Imperial** Metric

Capacity (imperial tons)	4
Stroke (in)	38
Power Source	Mechanical
Head Type	E Type Head - For all standard work. Dimension between flanges: 8.13"
Head Length (in)	8.13
Head Width (in)	2
Weight (lbs)	36

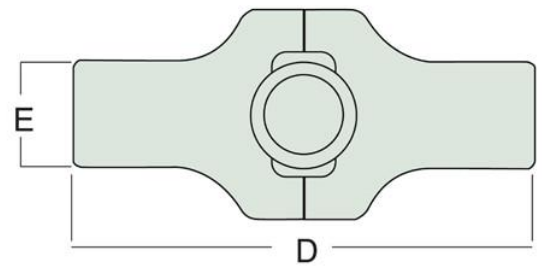
## Dimensions

Units: **Imperial** Metric

Collapsed Height (In)	57
Extended Height (In)	95
Dimension A (in)	57
Dimension B (in)	95
Dimension C (in)	7.38
Dimension D (in)	8.13
Dimension E (in)	2
Base Length (in)	7.38



E & F Style Head



S Style Head

