

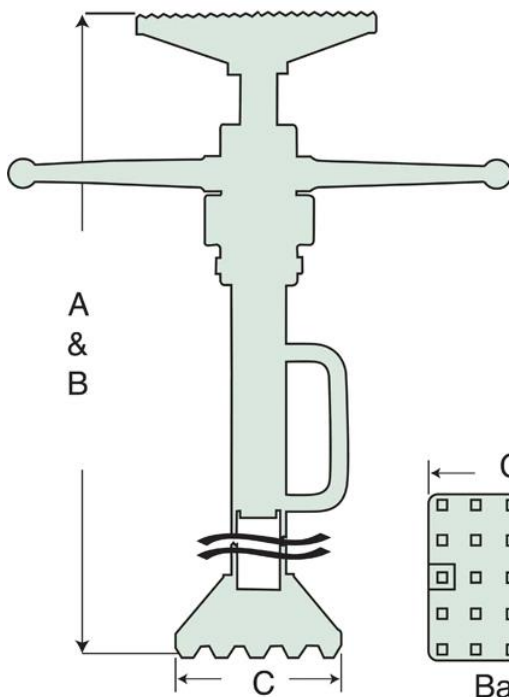
## Specifications

Units:	<b>Imperial</b>	Metric
Capacity (imperial tons)	4	
Stroke (in)	38	
Power Source	Mechanical	
Head Type	E Type Head - For all standard work. Dimension between flanges: 8.13"	
Head Length (in)	8.13	
Head Width (in)	2	
Weight (lbs)	39	

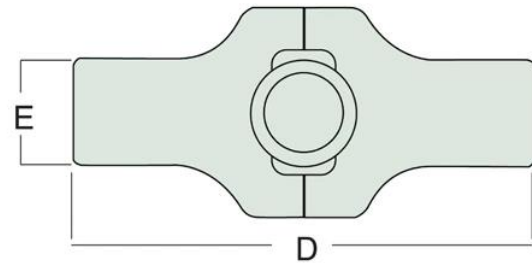
## Dimensions

Units: **Imperial** Metric

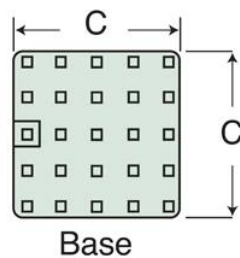
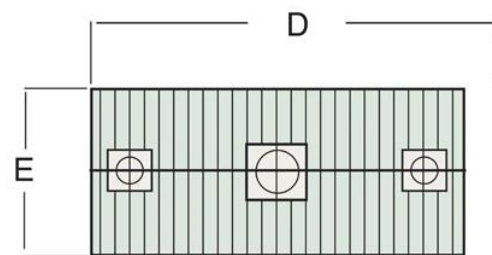
Collapsed Height (In)	69
Extended Height (In)	107
Dimension A (in)	69
Dimension B (in)	107
Dimension C (in)	7.38
Dimension D (in)	8.13
Dimension E (in)	2
Base Length (in)	7.38



E & F Style Head



S Style Head



Base