

Specifications

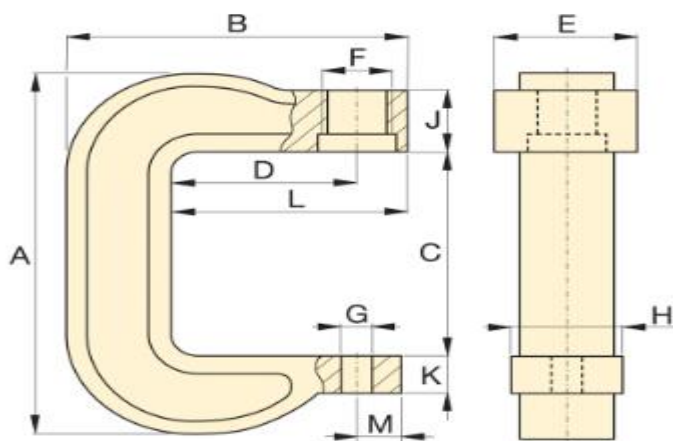
Units: **Imperial** Metric

Maximum Operating Pressure (psi)	10,000
Capacity (imperial tons)	5
Maximum Vertical Daylight (in)	6.5
Maximum Bed Width (in)	2
Compatible Cylinders	RC50,RC51,RC53,RC55,RC57,RC59
Weight (lbs)	14

Dimensions

Units: **Imperial** Metric

Dimension A (in)	11.44
Dimension B (in)	8
Dimension C (in)	6.5
Dimension D (in)	3.75
Dimension E (in)	2.88
Dimension F (in)	1 1/2 - 16 un
Dimension G (in)	1.02
Dimension H (in)	2
Dimension J (in)	2.5
Dimension K (in)	1.06
Dimension L (in)	4.75
Dimension M (in)	1
Dimension N (in)	-
Dimension O (in)	-



C-Clamp Press A-205, A-210, A-220

