

## Specifications

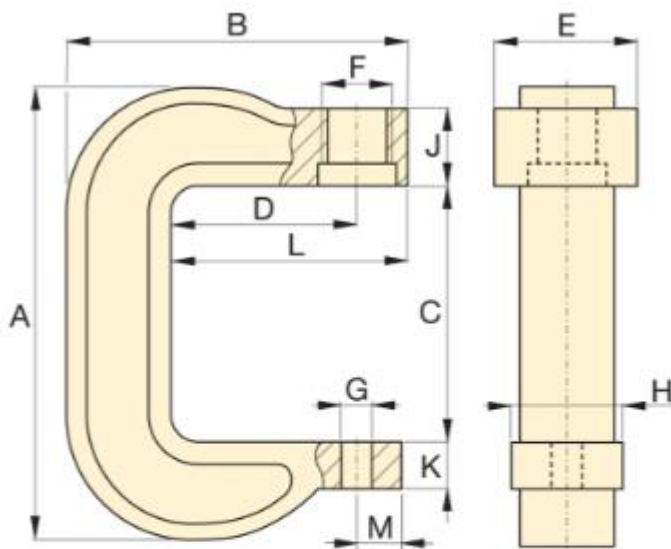
Units: **Imperial** Metric

Maximum Operating Pressure (psi)	10,000
Capacity (imperial tons)	10
Maximum Vertical Daylight (in)	9
Maximum Bed Width (in)	3.25
Compatible Cylinders	RC101,RC102,RC104,RC106,RC108,RC1010,RC1012,RC1014
Weight (lbs)	37

## Dimensions

Units: **Imperial** Metric

Dimension A (in)	16
Dimension B (in)	11.13
Dimension C (in)	9
Dimension D (in)	6
Dimension E (in)	3.25
Dimension F (in)	2 1/4 - 14 un
Dimension G (in)	1.02
Dimension H (in)	3
Dimension J (in)	2.5
Dimension K (in)	1.69
Dimension L (in)	7.63
Dimension M (in)	1.13
Dimension N (in)	-
Dimension O (in)	-



**C-Clamp Press A-205, A-210, A-220**

