

Specifications

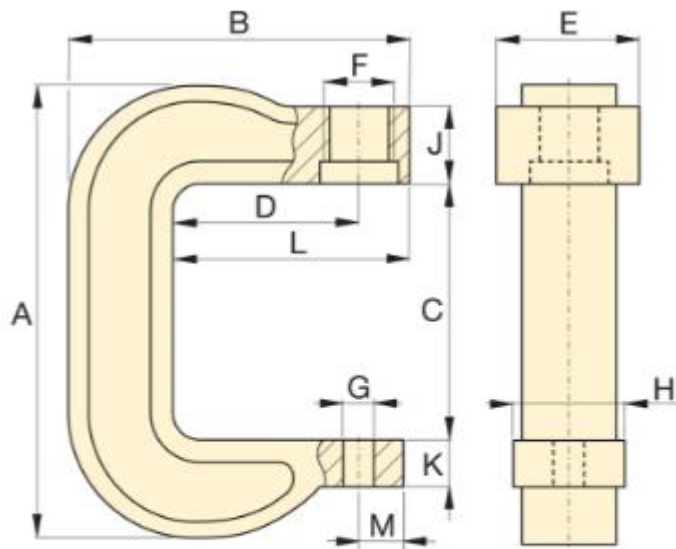
Units: **Imperial** Metric

Maximum Operating Pressure (psi)	10,000
Capacity (imperial tons)	20
Maximum Vertical Daylight (in)	11.88
Maximum Bed Width (in)	3.75
Compatible Cylinders	RC251,RC252,RC254,RC256,RC258,RC2510,RC2512,RC2514
Weight (lbs)	83

Dimensions

Units: **Imperial** Metric

Dimension A (in)	21.25
Dimension B (in)	13.63
Dimension C (in)	11.88
Dimension D (in)	6
Dimension E (in)	4.76
Dimension F (in)	3 5/16 - 12 un
Dimension G (in)	1.02
Dimension H (in)	3.75
Dimension J (in)	2.75
Dimension K (in)	1.88
Dimension L (in)	8.38
Dimension M (in)	1.13
Dimension N (in)	-
Dimension O (in)	-



C-Clamp Press A-205, A-210, A-220

