

## Specifications

Units: **Imperial** Metric

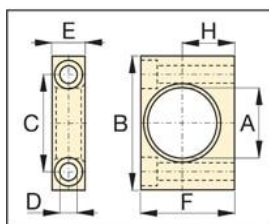
For Use with Cylinder Capacity (imperial tons)	16
Cylinder Series Compatibility	RD
Compatible Products	RD166, RD1610

## Dimensions

Units: **Imperial** Metric

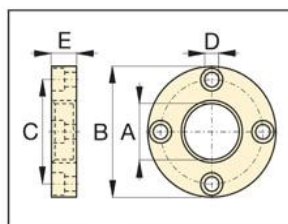
Dimension A (in)	2.625-16 UN
Dimension B (in)	3.63
Dimension C (in)	3.12
Dimension D (in)	0.27
Dimension E (in)	0.75

## RD CYLINDER ATTACHMENTS



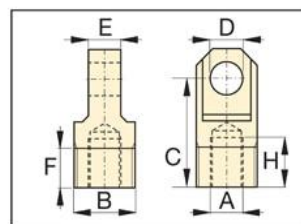
### Foot Mounting

Mounts onto cylinder collar. Mounting screws not included.



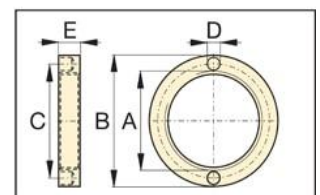
### Flange Mounting

Mounts onto cylinder collar. Mounting screws not included.



### Clevis Eye

Threads onto plunger or into cylinder base



### Retainer Nut

For locking foot or flange mountings. Tightens onto cylinder collar threads (included with foot and flange mounting kits)