

## Specifications

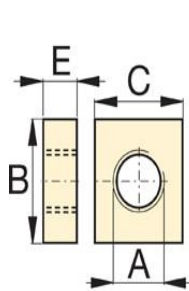
Units: **Imperial** Metric

For Use with Cylinder Capacity (imperial tons)	10
Cylinder Series Compatibility	RC
Compatible Products	RC101, RC102, RC104, RC106, RC108, RC1010, RC1012, RC1014

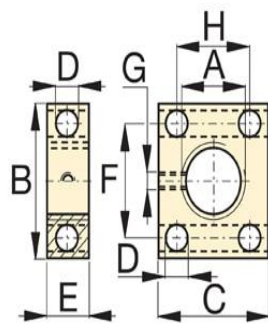
## Dimensions

Units: **Imperial** Metric

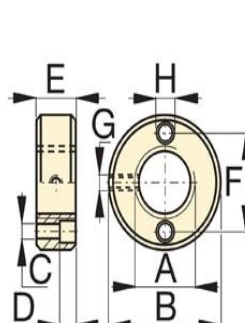
Mounting Block Dimension A (in)	2 1/4" - 14
Mounting Block Dimension B (in)	3.94
Mounting Block Dimension C (in)	3.25
Mounting Block Dimension D (in)	0.63
Mounting Block Dimension E (in)	1.18
Mounting Block Dimension F (in)	3
Mounting Block Dimension G (in)	7/16"-20
Mounting Block Dimension H (in)	2.31



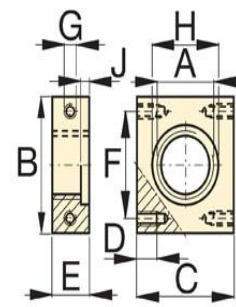
**RB-5, -10**  
**RB-15, -25**



**AW-51**



**AW-53**



**AW-102 (J=.19)**