

**To Protect Your Warranty, Use Only ENERPAC Hydraulic Oil.**

Enerpac recommends that all kit components be installed to insure optimum performance of the repaired product.

**Note:** Lubricate the air cylinder bore and air piston seal with silicone grease prior to assembly.

**Note:** Torque items 20 and 41 to 18-22 ft-lbs.

**Note:** Make sure that item 18 goes over item 15 -- item 18 must keep item 17 inside of item 15.

**Note:** Torque item 34 to 1-2 ft-lbs.

**Note:** Make sure that item 44 (magnetic holder) is facing towards piston).

**Note:** Torque item 3 (CT443020) to 78-98 ft-lbs.  
 Torque item 3 (CT444020) to 87-100 ft-lbs.

**Note:** Torque item 9 to 3.5 - 4.5 ft-lbs.

**Note:** To install item 10 (hydraulic cylinder), first bottom the cylinder out and then back out  $\frac{1}{2}$  - 1 turn until the notches are lined up.

**Note:** Torque item 11 to 87-108 ft-lbs.

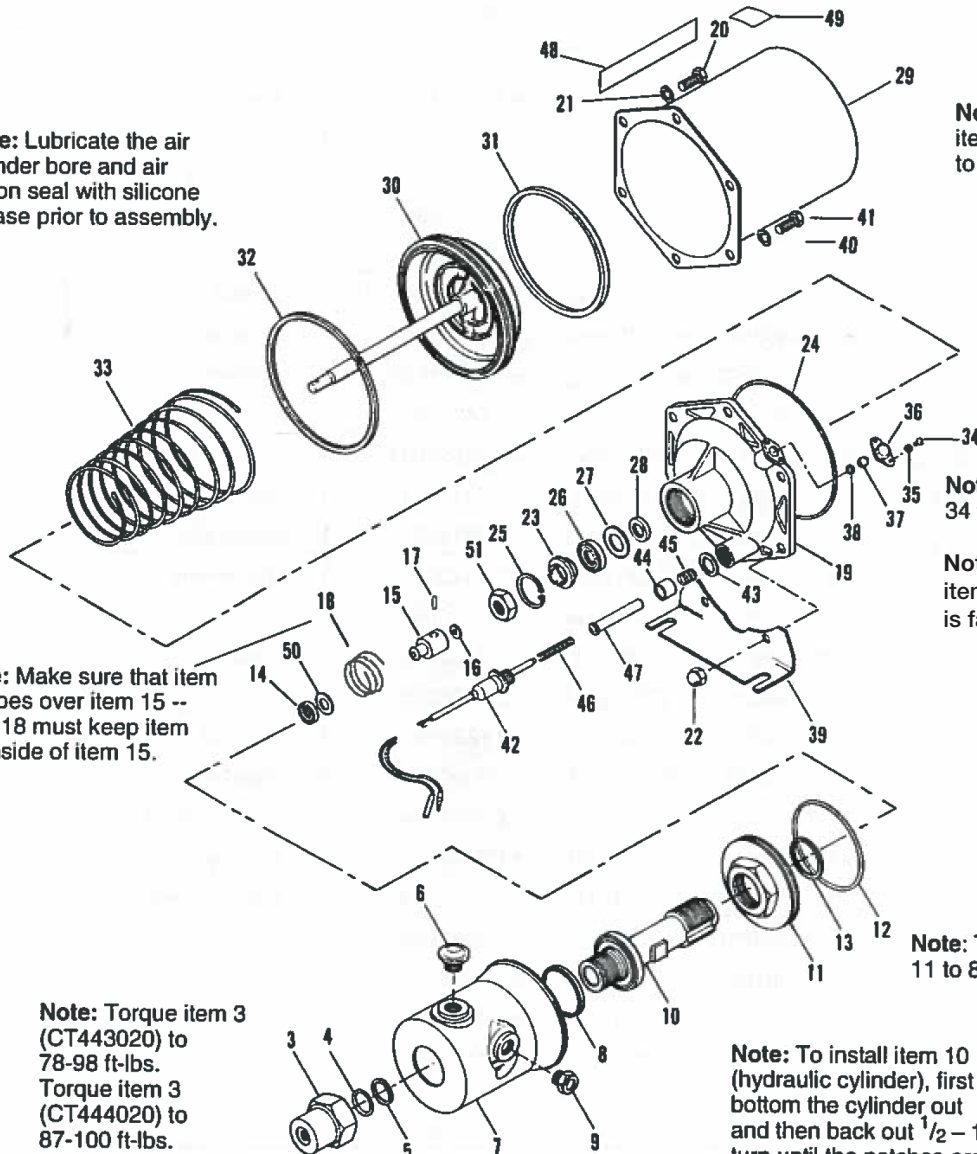


Figure 1, Hydraulic Boosters

**Repair Parts List for Figure 1**

| <b>Item</b> | <b>B3006</b> | <b>B3006V</b> | <b>B5003</b> | <b>B5003V</b> | <b>Qty.</b> | <b>Description</b>  |
|-------------|--------------|---------------|--------------|---------------|-------------|---------------------|
|             | WH3388580    | WH3388580     | WH3388580    | WH3388580     | 1           | Adapter (not shown) |
|             | CW396096     | CW396096      | CW396096     | CW396096      | 1           | Fitting (not shown) |
| 3           | CT444020     | CT444020      | CT444020     | CT444020      | 1           | End Cap             |
| 4           | ★ 410Z055G7  | ★ 412Z055G7   | ★ 410Z045G7  | ★ 412Z045G7   | 1           | O-Ring              |
| 5           | ★ 430Z055GB  | ★ 430Z055GB   | ★ 430Z045GB  | ★ 430Z045GB   | 1           | Backup Washer       |
| 6           | CT445024     | CT445024      | CT445024     | CT445024      | 1           | Filler Plug         |
| 7           | CT439900     | CT439900      | CT438900     | CT438900      | 1           | Reservoir           |
| 8           | ★ 410Z065G7  | ★ 412Z065G7   | ★ 410Z055G7  | ★ 412Z055G7   | 1           | O-Ring              |
| 9           | CT446023     | CT446023      | CT446023     | CT446023      | 1           | Sight Gauge         |
| 10          | CT433040     | CT433040      | CT432040     | CT432040      | 1           | Cylinder            |
| 11          | ★ CT436055   | ★ CT436055    | ★ CT436055   | ★ CT436055    | 1           | Lock Nut            |
| 12          | ★ 410Z110G7  | ★ 412Z110G7   | ★ 410Z110G7  | ★ 412Z110G7   | 1           | O-Ring              |
| 13          | ★ CT435167   | ★ CT435167    | ★ CT435167   | ★ CT435167    | 1           | Gasket              |
| 14          | ★ CT424051   | ★ CT1339041   | ★ CT423051   | ★ CT1338041   | 1           | U-Cup               |
| 15          | CT411051     | CT411051      | CT411051     | CT411051      | 1           | Piston              |
| 16          | CT413290     | CT413290      | CT413290     | CT413290      | 1           | Valve Seal          |
| 17          | CT416061     | CT416061      | CT415061     | CT415061      | 1           | Piston Pin          |
| 18          | CT420110     | CT420110      | CT419044     | CT419044      | 1           | Spring              |
| 19          | CT386900     | CT386900      | CT386900     | CT386900      | 1           | Casing              |
| 20          | CT398028     | CT398028      | CT398028     | CT398028      | 4           | Bolt                |
| 21          | 230Z10       | 112Z066       | 230Z10       | 112Z066       | 4           | Washer              |
| 22          | CT400055     | CT400055      | CT400055     | CT400055      | 6           | Cap Nut             |
| 23          | CT390044     | CT390044      | CT390044     | CT390044      | 1           | Support Ring        |
| 24          | ★ CT397041   | ★ CT397041    | ★ CT397041   | ★ CT397041    | 1           | O-Ring              |
| 25          | CT391044     | CT391044      | CT391044     | CT391044      | 1           | Retaining Ring      |
| 26          | ★ CT388041   | ★ CT1336041   | ★ CT388041   | ★ CT1336041   | 1           | U-Cup               |
| 27          | ★ CT389108   | ★ CT389108    | ★ CT389108   | ★ CT389108    | 1           | Backup Washer       |
| 28          | ★ CT387041   | ★ CT1335041   | ★ CT387041   | ★ CT133541    | 1           | U-Cup               |
| 29          | CT396900     | CT396900      | CT396900     | CT396900      | 1           | Air Cylinder        |
| 30          | CT392900     | CT392900      | CT392900     | CT392900      | 1           | Air Piston          |
| 31          | ★ CT393041   | ★ CT393041    | ★ CT393041   | ★ CT393041    | 1           | U-Cup               |
| 32          | ★ CT394044   | ★ CT394044    | ★ CT394044   | ★ CT394044    | 1           | Piston Ring         |
| 33          | CT395110     | CT395110      | CT395110     | CT395110      | 1           | Return Ring         |
| 34          | 002A028      | 002A028       | 002A028      | 002A028       | 2           | Screw               |
| 35          | 023A108      | 023A108       | 023A108      | 023A108       | 2           | Washer              |
| 36          | CT449101     | CT449101      | CT449101     | CT449101      | 1           | Retaining Ring      |
| 37          | ★ CT448018   | ★ CT448018    | ★ CT448018   | ★ CT448018    | 1           | Filter              |
| 38          | CT447007     | CT447007      | CT447007     | CT447007      | 1           | Strainer            |
| 39          | CT401111     | CT401111      | CT401111     | CT401111      | 2           | Bracket             |
| 40          | 230Z10       | 112066        | 230Z10       | 112066        | 2           | Lock Washer         |

★ Items included in and available as part of Repair Kit B203050K. For Viton seals, use Repair Kit B203050KV.

**Repair Parts List for Figure 1**

| <b>Item</b>  | <b>B3006</b> | <b>B3006V</b> | <b>B5003</b> | <b>B5003V</b> | <b>Qty.</b> | <b>Description</b> |
|--|--------------|---------------|--------------|---------------|-------------|--------------------|
| 41   | CT402028     | CT402028      | CT402028     | CT402028      | 2           | Bolt               |
| 42   | CT408900     | CT408900      | CT408900     | CT408900      | 1           | Switch             |
| 43   | CT407108     | CT407108      | CT407108     | CT407108      | 1           | Lock Washer        |
| 44   | CT404900     | CT404900      | CT404900     | CT404900      | 1           | Magnet Holder      |
| 45   | CT403110     | CT403110      | CT403110     | CT403110      | 1           | Spring             |
| 46   | CT406110     | CT406110      | CT406110     | CT406110      | 1           | Spring             |
| 47   | CT405885     | CT405885      | CT405885     | CT405885      | 1           | Core               |
| 48   | ★ CT450026   | ★ CT450026    | ★ CT450026   | ★ CT450026    | 1           | Decal              |
| 49   | ★ CT453026   | ★ CT453026    | ★ CT452026   | ★ CT452026    | 1           | Decal              |
| 50   |              |               | ★ CT427108   | ★ CT427108    | 1           | Backup Washer      |
| 51   |              |               | CT430044     | CT430044      | 1           | Stop Ring          |
|  | ★ CT488041   | ★ 412Z025G7   | ★ CT488041   | ★ 412Z025G7   | 1           | Seal (not shown)   |
|  | ★ CT467167   | ★ CT467167    | ★ CT467167   | ★ CT467167    | 1           | Gasket (not shown) |
| ★ Items included in and available as part of Repair Kit B203050K. For Viton seals, use Repair Kit B203050KV. |              |               |              |               |             |                    |



[www.enerpac.com](http://www.enerpac.com)