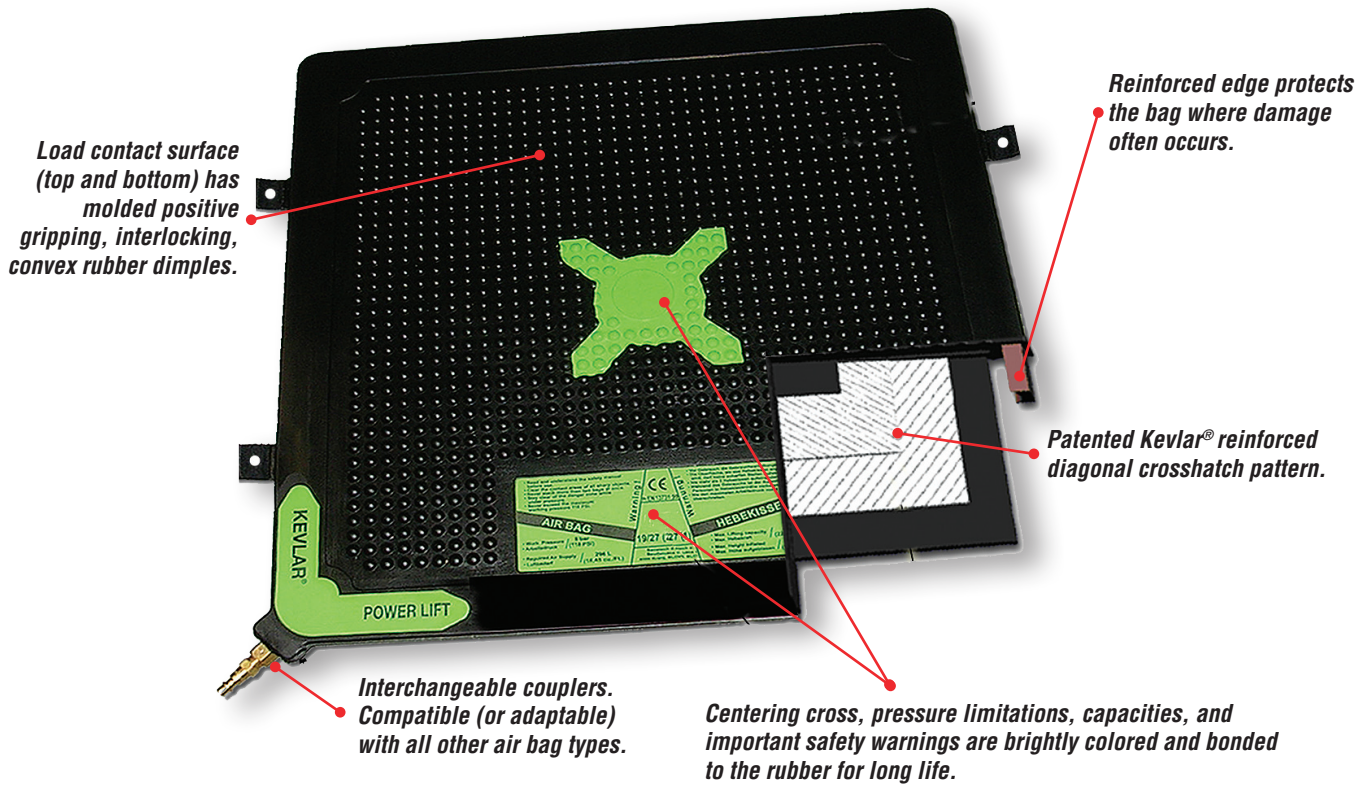


LIFTING JACKS



All Simplex Air Bags have a maximum working pressure of 8 bars.



Load contact surface (top and bottom) has molded positive gripping, interlocking, convex rubber dimples.

Reinforced edge protects the bag where damage often occurs.

Patented Kevlar® reinforced diagonal crosshatch pattern.

Interchangeable couplers. Compatible (or adaptable) with all other air bag types.

Centering cross, pressure limitations, capacities, and important safety warnings are brightly colored and bonded to the rubber for long life.

Heavy Duty Air Bag Shown

PRODUCT LINE OVERVIEW

► **Something for Every Job**

From the thinnest of air bags to the widest assortment of controls, Simplex heavy duty Air Bags provide a solution to the most unique and specialized application.

► **General Maintenance**

From factory maintenance to portable tool chests, Simplex Hand Jacks are the standard utility tools for all maintenance applications.

► **Self Contained Mobile Force**

From structural movers to plant maintenance crews, Simplex Toe Jacks offer high capacities in a broad range of lifting.

Hydraulic Hand Jacks

17.8 - 889.6 kN Hydraulic Hand Jacks

Simplex 17.8 through 889.6 kN capacity all purpose jacks are ideal for use in general industrial applications, and are used extensively in maintenance, construction and material handling. The versatility of the Simplex bottle jack has made it a favorite in shipyards, factories, oil fields, mines & general industries.



Lifting Jacks

Hydraulic Toe Jacks

17,8 & 89 kN Hydraulic Toe Jacks

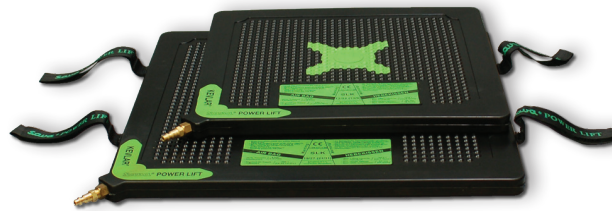
Simplex hydraulic toe jacks are the solution to all of your low clearance lifting problems. Choose from the widest variety of self contained toe jacks in the industry. Capacities range from 17.8 through 89 kN. The Simplex TJH2 is a 17.8 kN self-contained toe jack utilizing 15.7 mm minimum toe height and over 101.6 mm of travel.



Air Bags

9.8 & 659.2 kN Air Bags

Thin, powerful & light weight. Simplex Air Bags are the answer to the toughest industrial applications. Starting with a minimum height of 27.9 mm, Simplex lifting bags offer high capacity for clearances too small for most conventional jacks. They are ideal for use in railroads, construction, mining, shipyards and industrial applications that require safe, reliable lifting, spreading, bending or pushing. Simplex air lifting bags are manufactured with neoprene & Kevlar reinforced construction and are safer, stronger and more reliable than other bags on the market.

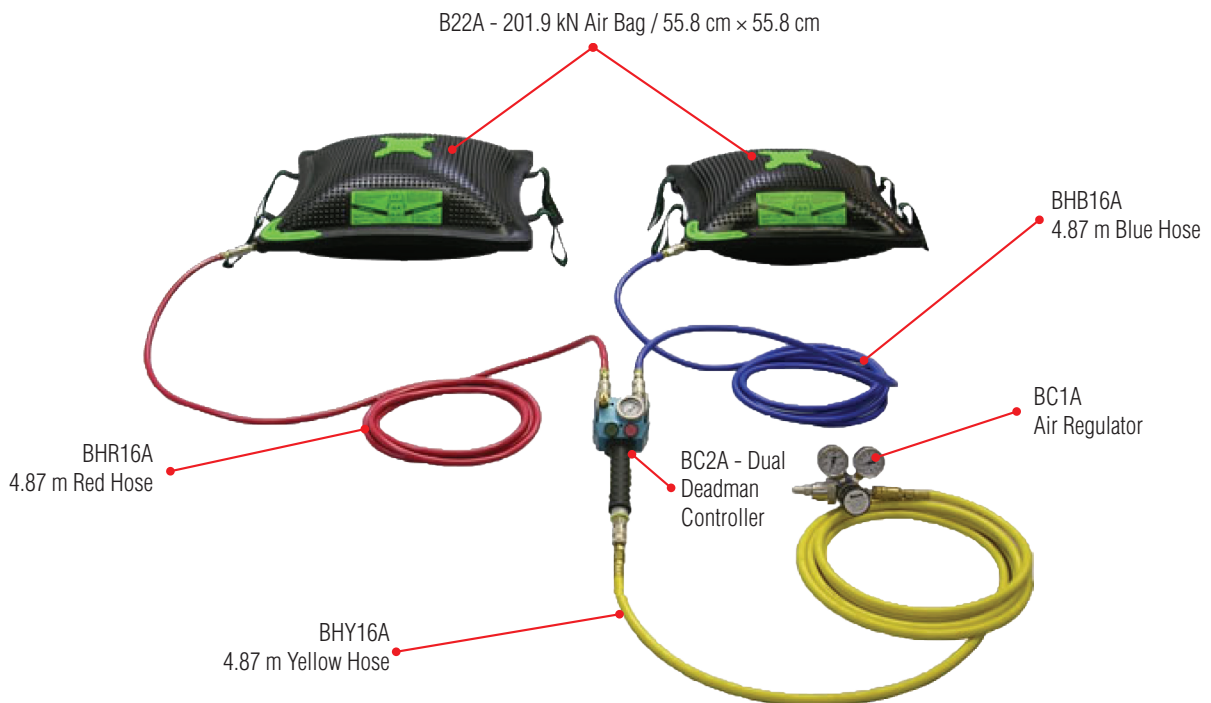


Lifting Capacity and Height Guidelines

When selecting the proper air bag arrangement, consider size and lift requirements. The amount of contact surface is a direct relationship to force output. It's important to consider the lifting height when sizing the proper air bag. As an air lifting bag inflates (increasing convexity), contact surface is reduced, which lowers the lifting capacity.

Air bags stacked on top of each other will increase the lifting height, but not the overall air bag capacity. Lifting capacity depends on the size of the air bag surface in contact with the lower surface of the object to be lifted. In order to choose the proper size air bag, reference the performance graph on page 98.

Example below demonstrates a typical 403.8 kN two air bag system arrangement.



Lifting Jacks

LIFTING JACKS

HJ Series - Hand Jacks

SIMPLEX



HJ Family Shown

Capacity Range▶ 17.8 - 889.6 kN

Stroke Range▶ 62 - 150.1 mm

Weight▶ 3.6 - 87 kg

- ▶ Drop forged base and rugged welded housing construction.
- ▶ All models include over travel protection.
- ▶ Grooved saddles help prevent load slippage.
- ▶ Super low profile versions available in 97.9 & 195.7 kN capacities.
- ▶ Piston rods are chrome plated to resist corrosion.

SCREW EXTENSIONS

17.8 through 195.7 kN models include screw extensions for quick setup.



LEVER BARS

All Hand Jacks come equipped with a 3 piece Lever Bar set to accommodate space limitations.



Various applications are suitable for the hydraulic HJ Series hand Jack, ranging from spreading, leveling, lifting and holding.▼



Model	Capacity (kN)	Stroke (mm)	Minimum Height (mm)	Extended Screw Height (mm)	Maximum Height (mm)	Base Area (mm)	Piston Diameter (mm)	Maximum Handle Effort (kg)	Weight (kg)
HJ2A	17.8	100.1	160.0	50.0	309.9	95.0 X 111.0	21.1	37.2	3.6
HJ3A	26.7	104.9	167.9	65.0	338.1	95.0 X 116.1	23.9	49.0	4.1
HJ5A	44.5	150.1	212.1	74.9	436.9	95.0 X 122.9	29.0	43.1	5.0
HJ8A	71.2	150.1	218.9	74.9	444.0	95.0 X 137.9	32.8	39.0	5.9
HJ11A	97.9	150.1	218.9	74.9	444.0	95.0 X 142.0	37.3	48.1	6.5
HJ11ALP	97.9	62.0	131.1	30.0	223.0	95.0 X 142.0	37.3	48.1	5.5
HJ22A	195.7	150.1	233.9	74.9	459.0	127.0 X 170.9	50.8	49.0	12.1
HJ22ALP	195.7	104.9	190.0	55.1	350.0	127.0 X 170.9	50.8	49.0	10.0
HJ35A	311.4	150.1	245.9	*	396.0	180.1 X 214.4	69.9	44.0	23.5
HJ55A	489.3	150.1	252.0	*	402.1	180.1 X 230.1	80.0	47.2	28.5
HJ100A	889.6	150.1	300.0	*	450.1	295.9 X 333.0	110.0	32.2	87.0

Lifting Jacks

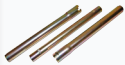


Capacity Range ▶ 17.8 - 89 kN
 Stroke Range ▶ 112.8 - 228.6 mm
 Weight ▶ 8.2 - 38.6 kg

- ▶ Self-contained models for maximum versatility.
- ▶ Low toe heights fit in tight clearances.
- ▶ The lowest handle effort for easy operation.
- ▶ The lowest weights for reduced back injuries.
- ▶ Swivel sockets for access in close quarters. (TJH5 & TJH10 only).
- ▶ Lever Bars are included with all models.

TJH Family Shown

LEVER BARS



TJH2, TJH5 and TJH10 Toe Jacks come equipped with a 3 piece Lever Bar set to accommodate space limitations.

LEVER BAR



TJH109LS Toe Jack comes equipped with a solid one piece Lever Bar.

TOE LIFT



Toe Lifts are rated at maximum capacity on all models.

PISTOL GRIP



TJH109LS comes equipped with an ergonomic pistol grip for rapid advancement to load.

Its small footprint and ease of mobility make the TJH10 perfect for lifting a variety of equipment when space and clearance are at a premium. ▼



Model	Capacity (kN)	Stroke (mm)	Minimum Height (mm)		Base Area (mm x mm)	Maximum Handle Effort (kg)	Method Of Return	Weight (kg)
			Toe (mm)	Cap (mm)				
TJH2	17.8	112.8	15.7	235.0	125.0 x 177.8	23.1	Load	8.2
TJH5	44.5	117.3	25.4	298.5	184.1 x 269.7	15.0	Spring	24.0
TJH10	89.0	149.1	31.8	333.5	241.3 x 285.8	17.2	Spring	38.6
TJH109	89.0	228.6	57.2	558.8	165.1 x 254.0	36.3	Spring	25.4
TJH109LS	89.0	228.6	55.1	409.7	152.4 x 228.6	33.1	Spring	18.6



B Series Shown

Capacity Range► 9.8 - 659.2 kN

Lifting Height► 68.6 - 508 mm

Maximum Burst Pressure► 32 bar

- 11 models with capacities ranging from 9.8 & 659.2 kN.
- Simplex air bags operate on standard shop air up to 8 bars.
- All models include 2 ply Kevlar with neoprene.
- Wide variety of safety controllers for single & multiple bag systems.
- Lightweight design makes the Simplex air bags easy to set up.
- B22A through B74A bags come with side holes for attaching bags together.

Lifting Jacks

THINK SAFETY

Please refer to pages 4&5 for a complete list of safety tips and recommendations.



Y CONNECTOR - pages 100 - 101

Allows control of two bags from one single fitting controller.



DUAL DEADMAN CONTROLLER - pages 100 - 101

Used for precise inflation and deflation control.

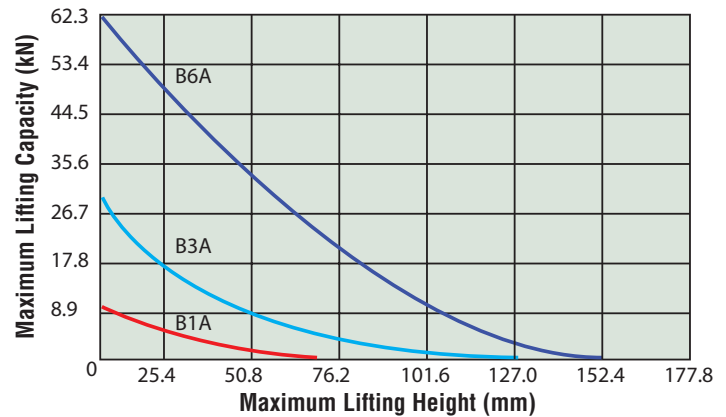


Durability and strength makes Simplex Air Lifting Bags the perfect solution to raise these collapsed concrete slabs for repair. ▼

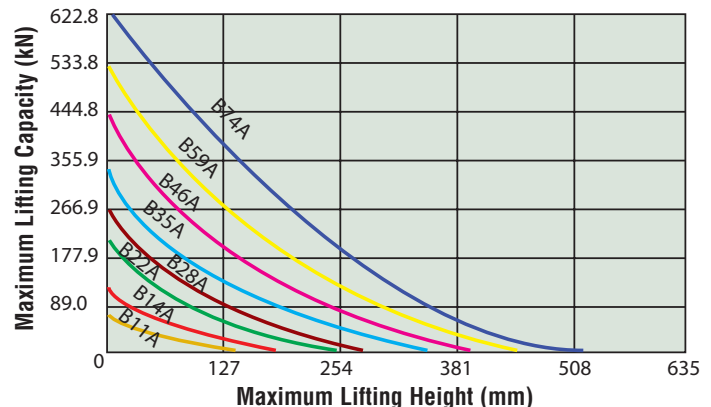


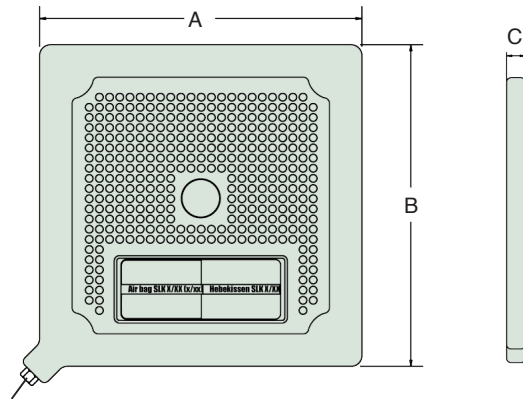
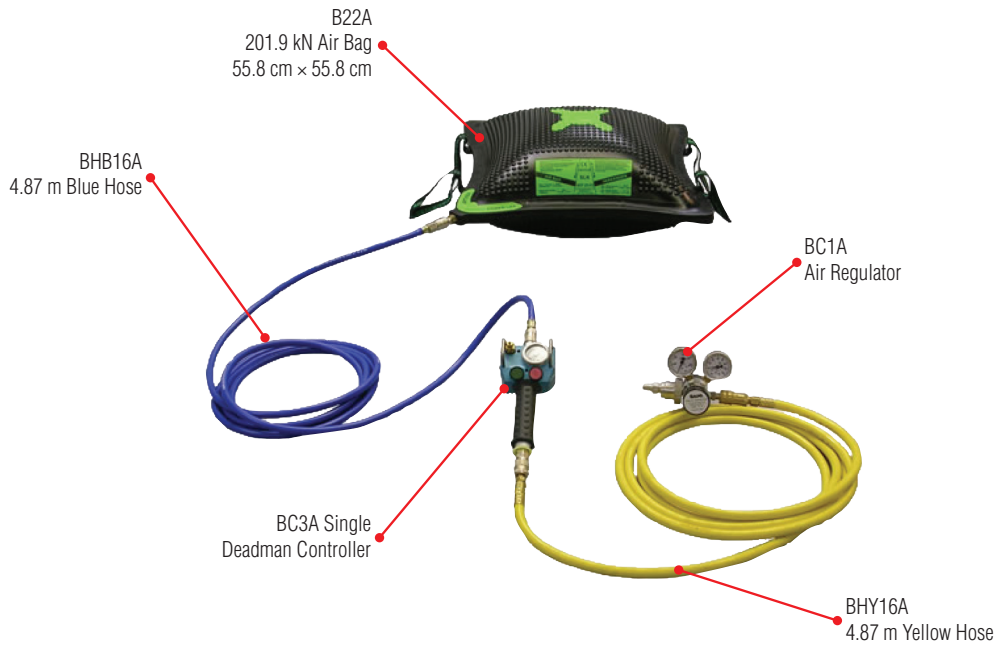
Air Bag Performance

B1A Through B6A Air Bag Chart





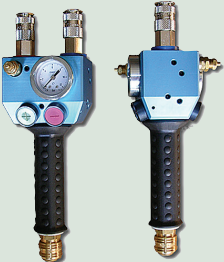

B11A Through B74A Air Bag Chart


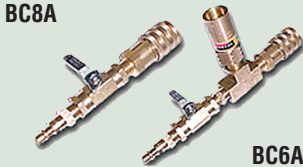
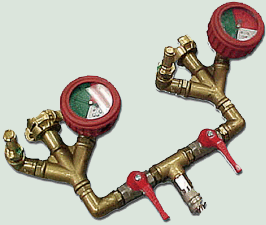






1/4" - 18 NPTF

Model	Capacity (kN)	Maximum Lifting Height (mm)	A	B	C	Air Required @ 8 bar/m ³	Maximum Burst Pressure (bar)	Weight (kg)
			Length (mm)	Width (mm)	Thick (mm)			
B1A	9.8	68.6	152.4	152.4	27.9	0.01	32	0.6
B3A	27.6	129.5	228.6	228.6	27.9	0.02	32	1.3
B6A	56.9	149.9	304.8	304.8	27.9	0.04	32	2.4
B11A	96.1	177.8	381.0	381.0	27.9	0.09	32	4.0
B14A	126.3	218.4	457.2	457.2	27.9	0.15	32	5.3
B22A	201.9	269.2	558.8	558.8	27.9	0.30	32	8.1
B28A	246.4	299.7	609.6	609.6	30.5	0.42	32	11.2
B35A	314.0	358.1	685.8	685.8	30.5	0.62	32	13.6
B46A	412.8	419.1	787.4	787.4	30.5	0.92	32	18.2
B59A	523.1	449.6	889.0	889.0	30.5	1.33	32	22.5
B74A	659.2	508.0	914.4	914.4	30.5	1.50	24	25.3

Model	Description
	<p>Industrial duty, color coded Supply Hoses allows the user to coordinate the lift properly and safely.</p> <p>BHR16A - 4.87 m Red Hose</p> <p>BHR32A - 9.75 m Red Hose</p> <p>BHB16A - 4.87 m Blue Hose</p> <p>BHB32A - 9.75 m Blue Hose</p> <p>BHY16A - 4.87 m Yellow Hose</p> <p>BHY32A - 9.75 m Yellow Hose</p>
	<p>BC12</p> <p>Deluxe Dual Deadman Controller used for precise inflation and deflation control. Built in safety relief valves prevent over inflation with the pressure sensitive toggles.</p>
	<p>BC2A</p> <p>Dual Deadman Controller with pressure gauge and pressure relief valves. Control two bags from one air source. Reliable over extreme temperature range.</p>
	<p>BC3A</p> <p>Single Deadman Controller with pressure gauge and pressure relief valves. Reliable over extreme temperature range.</p>

Model	Description
	<p>BC9A</p> <p><i>Y Connector</i> allows control of 2 bags from one single fitting controller.</p>
	<p>BC8A BC6A</p> <p><i>In-Line Control Shut Off and Relief Valves</i> enable the user to disconnect a hose without deflating the bag.</p>
	<p>BC11</p> <p><i>Dual Safety Controller</i> with pressure gauge and pressure relief valve. Cost effective and reliable over a wide range of control applications.</p>
	<p>BC1A</p> <p><i>Pressure Regulator Controller</i> is a diaphragm type single stage regulator with high pressure air tank compatibility.</p>
	<p>BC4A</p> <p><i>Single Safety Controller</i> with pressure gauge and pressure relief valve. Cost effective and easy to use.</p>