

Specifications

Units: Imperial Metric

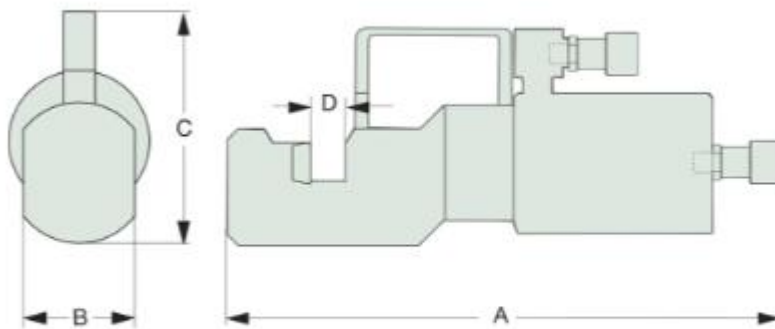
Maximum Operating Pressure (psi)	10,150
Capacity (imperial tons)	15
Chain Cutting Capacity	Grade 43 or less, 0.75 in
Chain Cutting Capacity	Grade 80 or less, 0.50 in
Bar Cutting Capacity	Tensile Strength 102 ksi, 0.75 in
Bar Cutting Capacity	Tensile Strength 145 ksi, 0.56 in
Bar Cutting Capacity	Tensile Strength 203 ksi, 0.50 in
Bar Cutting Capacity	Tensile Strength 232 ksi, 0.44 in
Weight (lbs)	18.5

Dimensions

Units: Imperial Metric

Dimension A (in)	13.5
Dimension D (in)	0.8

CCS* and CCD Series



* CCS models feature one 3/8" NPT female coupler,
CCD models feature two 3/8" NPT female couplers