



2525 GARDNER ROAD, BROADVIEW, IL 60155
1.800.323.9114 • Outside U.S. 1.708.865.1500
www.tksimplex.com

G4 SERIES GAS POWER PUMP

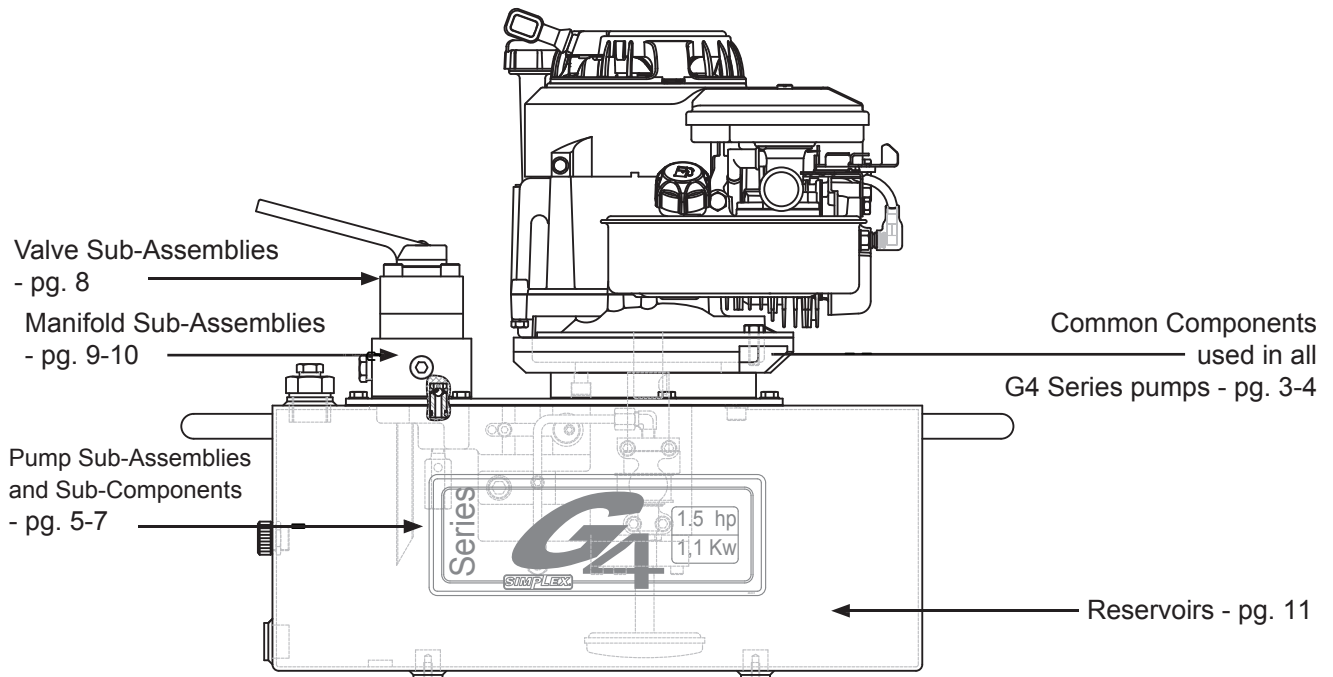
PARTS IDENTIFICATION MANUAL

Reference # TD066

Rev. - A

Date - 02/11

This illustration is for reference purposes only. The appearance of your unit may differ from the unit shown.



G4 Series Gas Power Pump

How to Identify Parts for Your Model.

MODEL MATRIX

Understanding our model number configurations:

	PUMP CLASS		PUMP TYPE			OPTION 1	OPTION 2	OPTION 3
Sample Model #:	G	4	8	4	3	C	L	R
Description:	Model	Performance Series	Power Consumption	Valve Function	Reservoir Size	Options		
	G = Gen II Pump	4 = 4 HP	8 = GAS POWER BRIGGS & STRATTON	2 = 2 Way Manual 3 = 3 Way Manual 4 = 4 Way Manual 8 = Port Block	2 = 1.5 Gal 3 = 2.5 Gal 5 = 5 Gal 6 = 10 Gal 7 = 20 Gal	C = Caster Wheel Kit L = Locking Style Manifold O = Oil Filter R = Roll Cage		

MODEL NUMBER & DATE CODE LOCATION

For Example, the date code and serial number

J= **October**

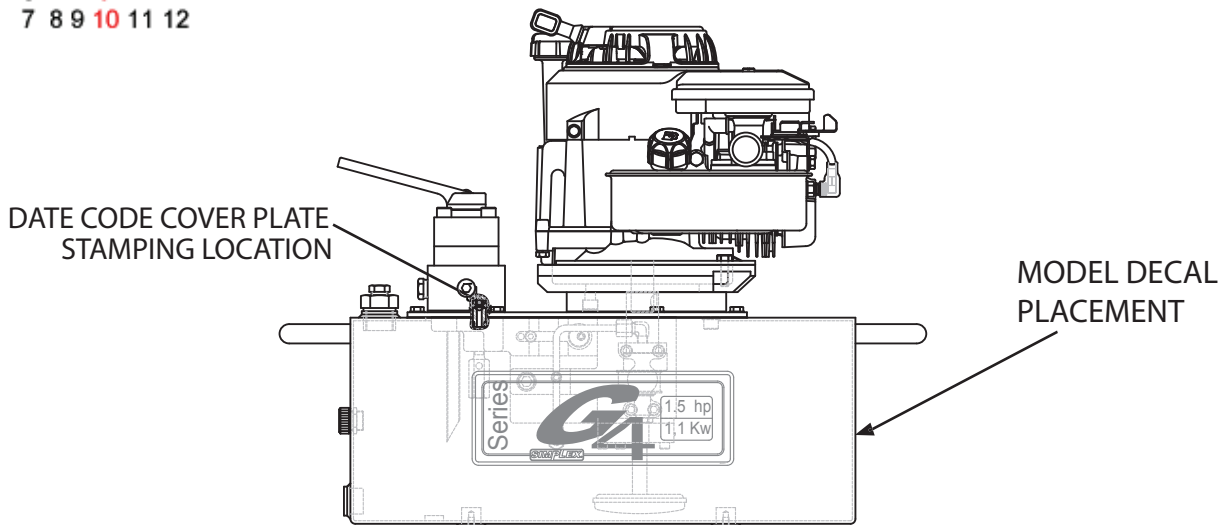
07 = **Year 2007**

42= **Week number in year**

J 07 42

A B C D E F G H I J K L

1 2 3 4 5 6 7 8 9 10 11 12

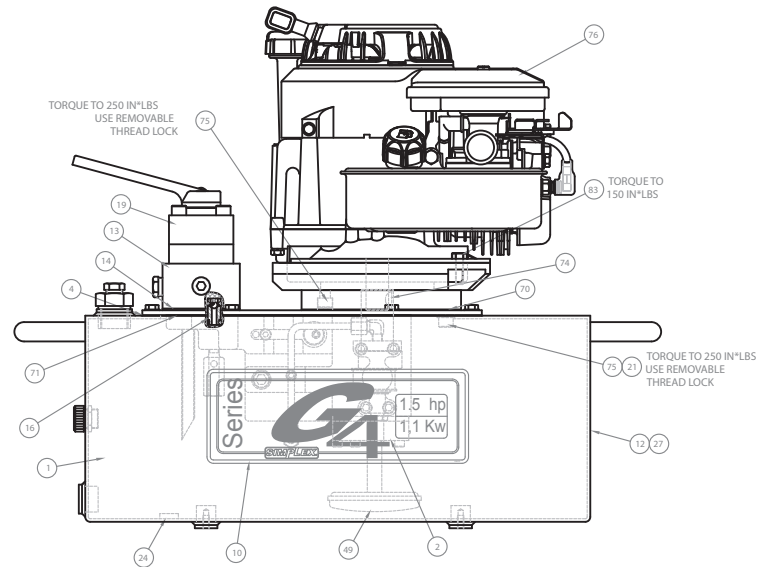
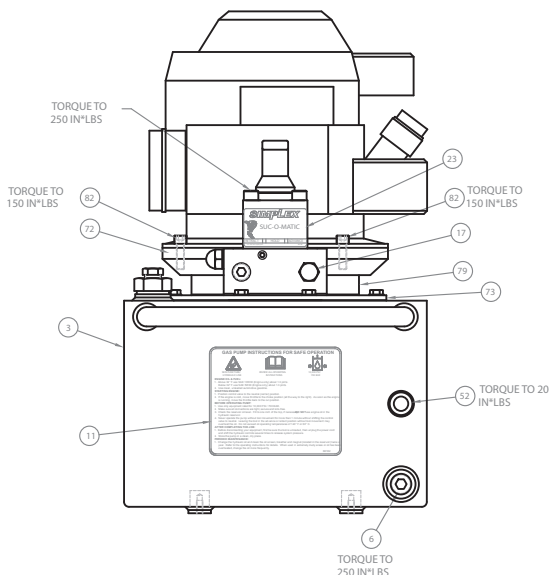
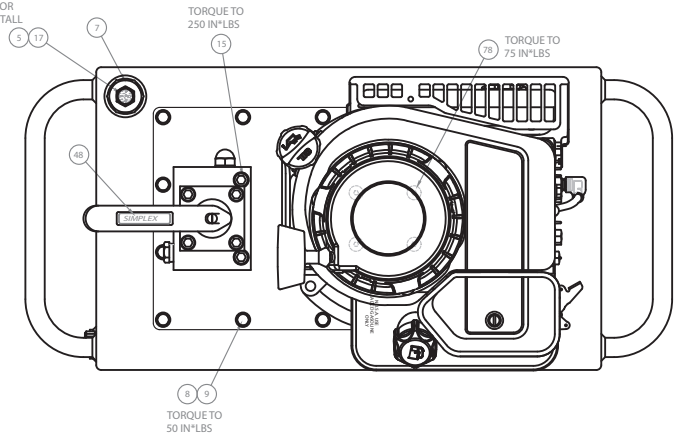


G4 Series Gas Power Pump

Common components used in pumps

NOTE: This illustration is for reference only. The appearance of your unit may differ from the unit shown.

INSTALL SHIPPING PLUG 87145 AND SHIP BREATHER VENT 46348 IN A BAG FOR CUSTOMER TO INSTALL



G4 Series Gas Power Pump

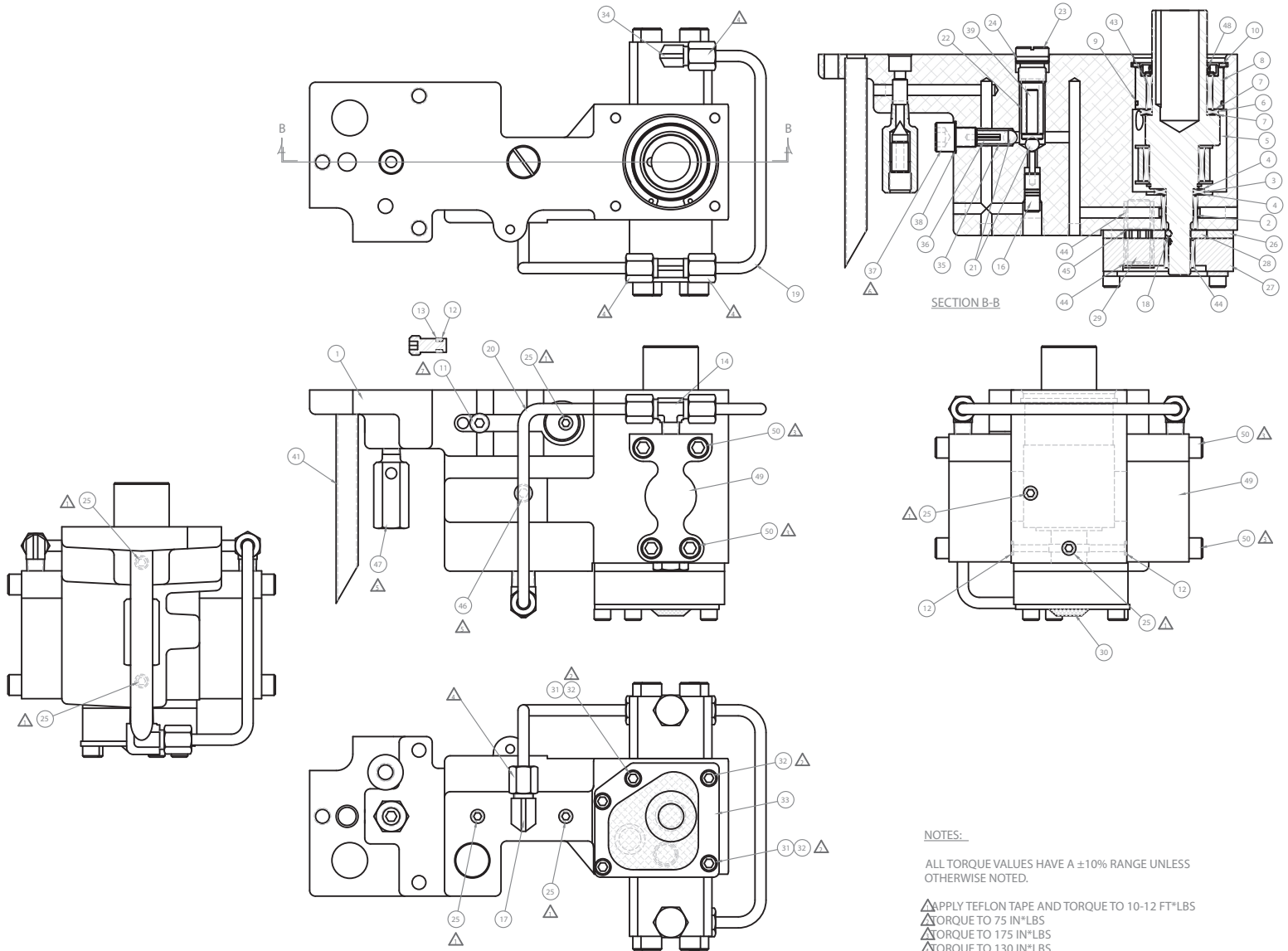
Common components used in pumps

ITEM #	DESCRIPTION	PART#	QTY.
2	PUMP ASM. G4 GAS 2	SEE PAGE 5	1
3	RESERVOIR	SEE PAGE 11	1
4	RESERVOIR GASKET	85469	1
5	BREATHER VENT 3/8 NPT	46348	1
6	1/2 FLUSH PLUG W/SEALANT	46997	1
7	SAE #12 HEX PLUG WITH PORT	46118	1
8	HHCS 1/4-20 X .75 PLT	65891	14
9	SEALING WASHER	65892	14
10	RESERVOIR DECAL G4	46635	2
11	SAFE USE LABEL GAS	68182	1
12	BLANK DECAL 3 X 4	87305	1
13	MANIFOLD ASM	SEE PAGE 9-10	1
14	VALVE GASKET	69242	1
14	VALVE GASKET (4WAY LOCK)	68581	1
15	SHCS 3/8-16 X 2 1/4 (2WAY, 3WAY & 4WAY)	93958	3
15	SHCS 3/8-16 X 2 3/4 (LOCK 3WAY/4WAY)	99921	3
16	VAL ADP W/ CHECK ASM	69378	1
17	PLUG (2WAY / 3 WAY)	46513	1
17	PLUG (4WAY)	46513	2
19	VALVE ASM	SEE PAGE 8	1
21	LOCK WASHER	93943	2
23	RET VLV DECAL 3 WAY	68199	1
23	RET VLV DECAL 4 WAY	68069	1
24	MAGNET	66021	1
27	DECAL OVERLAY	46539	1
48	SIMPLEX DECAL	88187	1
49	SCREEN	68884	1
52	SIGHT GAUGE	46009	1
70	GASKET-MOTOR	66012	1
71	PUMP GASKET G5	46032	1
72	PLATE RISER 4 HP	66121	1
73	COVER PLATE G5	45905	1
74	WOODRUFF KEY MACHINED	69864	1
75	SHCS 3/8-16 X 3/4 LG	97084	4
76	4HP B AND S GAS ENGINE	68311	1
78	FHCS 1/4-28 x 0.50	46279	4
79	MOTOR STANDOFF	46392	1
82	SHCS 5/16-18 X 1" LG	93589	2
83	HHCS 5/16-18 X 1.0	95059	1

G4 Series Gas Power Pump

Pump Sub Assembly

(46704SS) PUMP SUB ASM.



- NOTES:**
- ALL TORQUE VALUES HAVE A $\pm 10\%$ RANGE UNLESS OTHERWISE NOTED.
 - ▲ APPLY TEFLON TAPE AND TORQUE TO 10-12 FT*LBS
 - ▲ TORQUE TO 75 IN*LBS
 - ▲ TORQUE TO 175 IN*LBS
 - ▲ TORQUE TO 130 IN*LBS
 - ▲ TORQUE TO 16-19 FT*LBS
 - ▲ TORQUE TO 400 IN*LBS
 - ▲ TORQUE TO 25 IN*LBS

G4 Series Gas Power Pump

Pump Sub Assembly

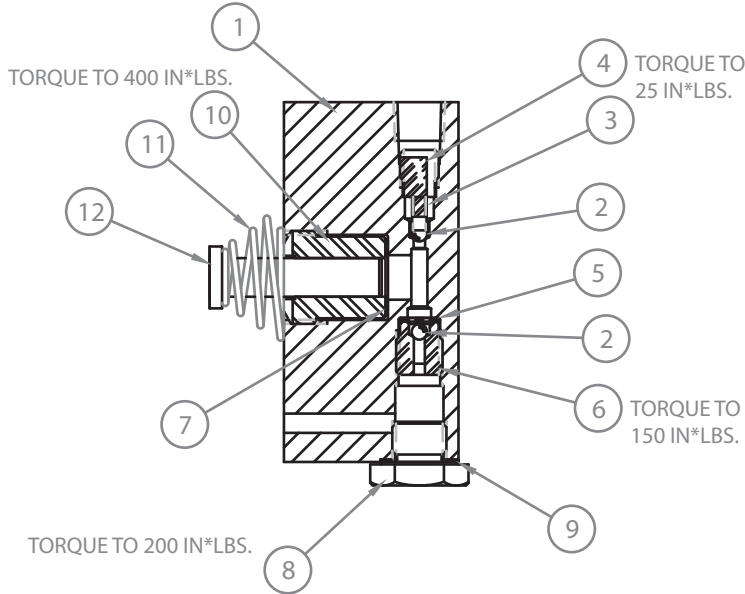
(46704SS) PUMP SUB ASM.

ITEM#	DESCRIPTION	PART#	QTY
1	PUMP BODY G5	45750	1
2	BEARING ROLLER 5/	68360	1
3	THRUST BEARING	66033	1
4	THRUST WASHER	66474	2
5	ECCENTRIC SHAFT A	SEE PAGE 7	1
6	THRUST BEARING	66106	1
7	THRUST WASHER	66108	2
8	ECCENTRIC SHAFT A	45908	1
9	O-RING 1 3/4 X 1	5602031	1
10	RETAINING RING	68978	1
11	POWR BUD DUMP PLU	43283	1
12	O-RING 3/16X5/16	5602008	3
13	BACKUP WASHER	56080087	1
14	MALE TEE 1/8 PIPE	45426	1
16	UNLOADING PISTON	SEE PAGE 7	1
17	MALE ELBOW 1/4 TU	45929	1
18	BALL 1/8"	90906	2
19	PISTON BLOCK TUBE	46548	1
20	OUTLET TUBE PISTO	45815	1
21	5/16" DIA. BALL R	91701	2
22	UNLOADING SPRING	43671	1
23	ADJUSTING SCREW G	45903	1
24	O-RING5/8X3/4 URE	56020162	1
25	PTF-SAE FLUSH PLU	40049	7
27	PLATE-BOTTOM	68849	1
28	GEAR SET 3/16" CL	68848S	1
29	SHAFT-IDLER	68850	1
30	SCREEN	68921	1
31	TUBE-GUIDE .11	68894	2
32	SHCS 1/4-28 X 1 3	68255	5
33	PLATE-SCREEN MTG.	68927	1
34	MALE ELBOW 1/8 PI	69354	1
35	SPRING	68225	1
36	ROLL PIN 1/8 X 3/	97782	1
37	BALL STOP G5	45904	1
38	GASKET 29/64 X 5/	86269	1
39	SPRING CAP UNLOAD	43673	1
41	TUBE RETURN	68569	1
43	BEARING ROLLER 1	66030	1
44	BEARING ROLLER 1/	68891	3
45	RING-RETAINING	68892	1
46	1/8 FLUSH PLUG W/	81093	1
47	CART REL. VAL. AS	66220	1
48	SHAFT SEAL G5	45930	1
49	PISTON BLOCK ASM.	SEE PAGE 7	2
50	SOCKET HEAD CAPSC	69392	8

G4 Series Gas Power Pump

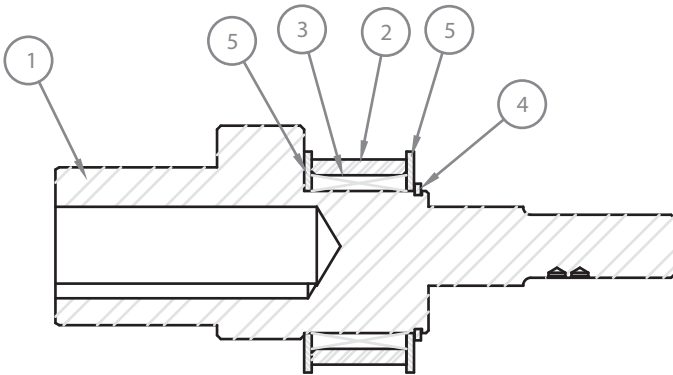
Sub Component Assemblies

(46705SS) PISTON BLK ASM.



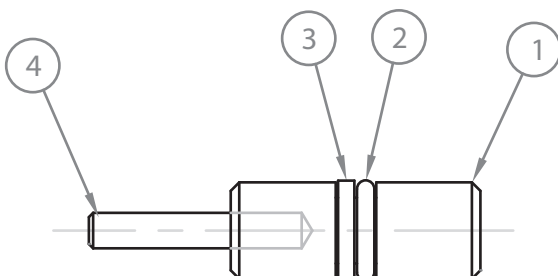
ITEM #	DESCRIPTION	PART #	QTY.
001	PISTON BLOCK	45539	1.00
002	BALL 1/8"	90906	2.00
003	SPRING	66042	1.00
004	BALL STOP	68810	1.00
005	BALL RETAINER	66043	1.00
006	INTAKE SEAT	66046	1.00
007	GASKET 25/64X19/32	85726	1.00
008	PLUG PISTON BLOCK	68825	1.00
009	GASKET 29/64 X 5/8	86269	1.00
010	ADAPTER-.290 PISTON	68945	1.00
011	SPRING, PISTON	68340	1.00
012	PISTON-.290 DIA	67868	1.00

(46745SS) ECCENTRIC SHAFT ASM.



ITEM #	DESCRIPTION	PART #	QTY.
001	ECCENTRIC SHAFT 7/8"	46703	1.00
002	ECCENTRIC RING G5	45907	1.00
003	ROLL BEARI 1 1/8x1 3/8x3/4 WIDE	45926	1.00
004	RETAINING RING EXTERNAL 1 1/8"	45931	1.00
005	THRUST WASHER 1 1/8" ID COAT	68026C	2.00

(43766SS) UNLOADING PISTON ASM.

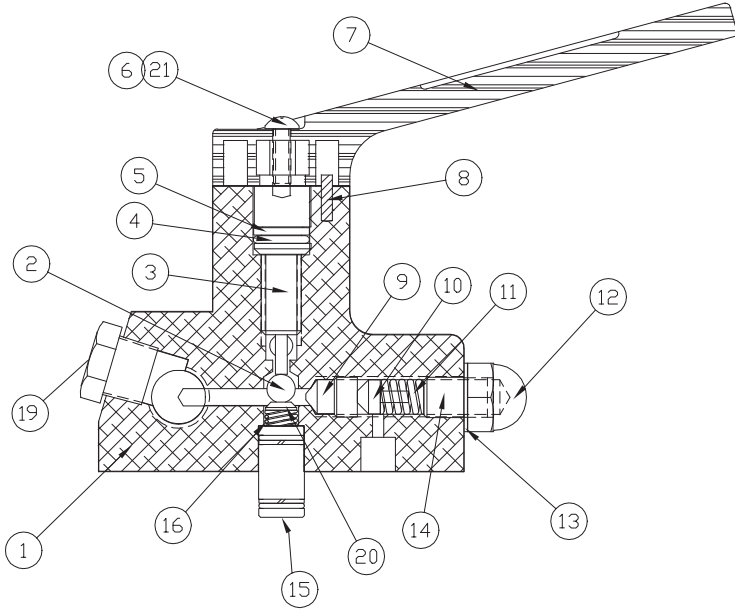


ITEM #	DESCRIPTION	PART #	QTY.
01	UNLOAD PISTON	43765	1.00
02	O RING 1/4X3/8	5602009	1.00
03	BACK-UP WASHER TEF	43768	1.00
04	DOWEL PIN 1/8X3/4 LG	43686	1.00

G4 Series Gas Power Pump

Valve Sub Assembly

(69094SS) 2 WAY MANUAL



ITEM #	DESCRIPTION	PART#	
		2 WAY VAL.	QTY.
01	2 WAY VALVE	69092	1.00
02	BALL	91701	1.00
03	VALVE STEM	69095	1.00
04	O-RING	5602111	1.00
05	BACKUP WASHER	5608111	1.00
06	SCREW	44595	1.00
07	VALVE HANDLE	69091	1.00
08	ROLL PIN	93835	2.00
09	SEAT - EXT RELIEF	++	1.00
10	CONE - EXT RELIEF	++	1.00
11	SPRING - RELIEF VALVE	++	1.00
12	ACORN NUT	69105	1.00
13	WASHER	69124	1.00
14	ADJUSTING SCREW	69104	1.00
15	ADAPTER ASSY.	68963	1.00
16	SPRING	68384	1.00
NS	PIPE PLUG	84084	1.00
18	1/4 SOC PIPE PLUG	93950	1.00
19	HEX ST. PIPE PLUG	87145	1.00
20	SPRING CAP	69634	1.00
21	LOCKWASHER	Y0010765	1.00

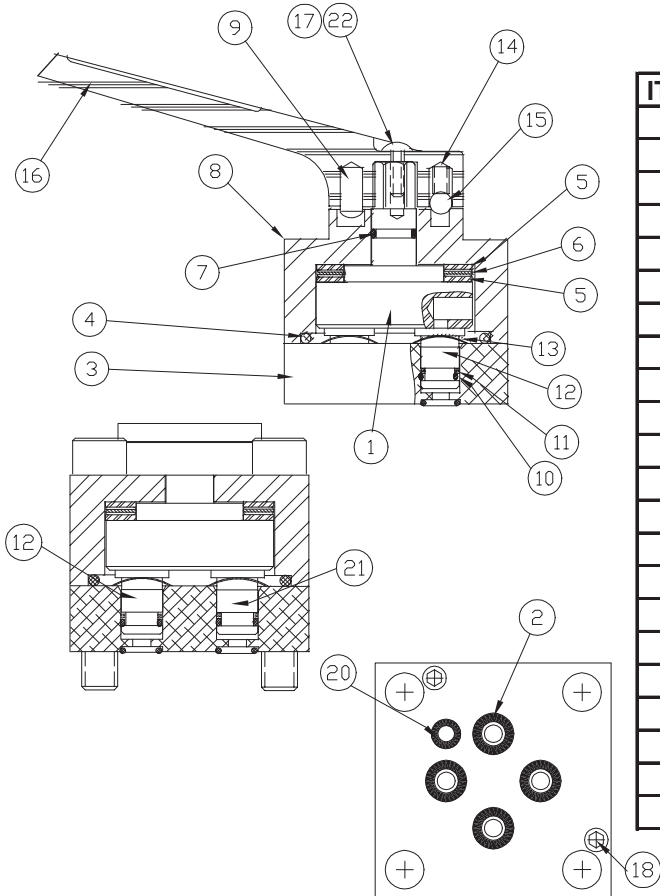
NS = NOT SHOWN

RELIEF REPLACEMENT KIT

(++ = COMPONENTS) -- PART #55057

(69101SS) 4 WAY MANUAL

(69691SS) 3 WAY MANUAL



ITEM #	DESCRIPTION	-69691		-69101	
		3 WAY VAL	QTY.	4 WAY VAL	QTY.
01	VALVE ROTOR	43762	1.00	43762	1.00
2	O-RING	*	2.00	*	4.00
03	SUBPLATE- VALVE	68180	1.00	68180	1.00
04	O-RING	*	1.00	*	1.00
05	THRUST WASHER	68026	2.00	68026	2.00
06	THRUST BEARING	68155	1.00	68155	1.00
07	O-RING	*	1.00	*	1.00
08	UPPER VALVE BLOCK	69135	1.00	69135	1.00
09	DRIVE LOK PIN	93804	1.00	93804	1.00
10	O-RING	*	6.00	*	3.00
11	WASHER	*	4.00	*	3.00
12	SHEAR SEAL	68029	3.00	68029	1.00
13	SPRING WASHER	68028	4.00	68028	3.00
14	DETENT SPRING	68025	1.00	68025	1.00
15	BALL	92549	1.00	92549	1.00
16	VALVE HANDLE	69091	1.00	69091	1.00
17	SCREW	44595	1.00	44595	1.00
18	SCREW	85317	2.00	85317	2.00
NS	SCREW	93598	4.00	93598	4.00
20	O-RING	*	1.00	*	1.00
21	SHEAR SEAL	68181	1.00	68181	2.00
22	LOCKWASHER	Y0010765	1.00	Y0010765	1.00

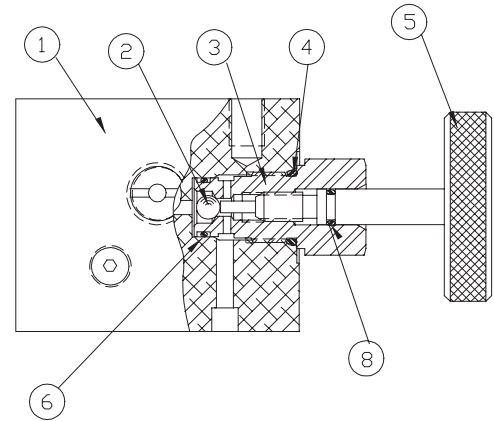
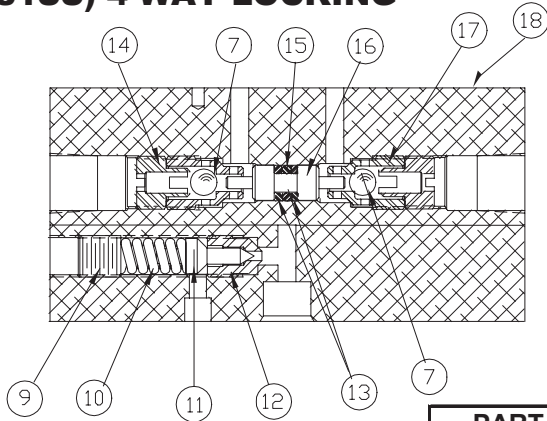
PACKING KIT 3 & 4 WAY MANUAL VALVE

(* = COMPONENTS) -- PART # 54490

G4 Series Gas Power Pump

Manifold Sub Assemblies

(68581SS) 4 WAY LOCKING

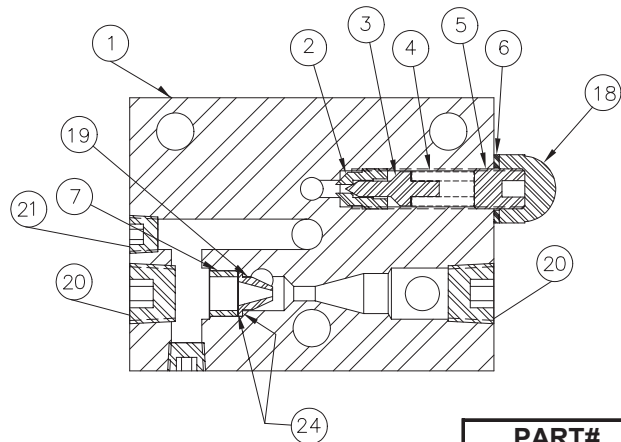
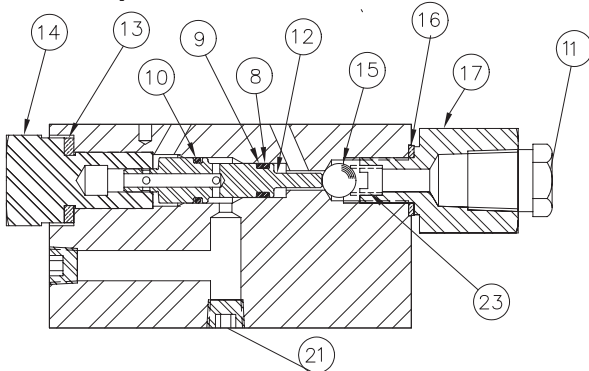


ITEM #	DESCRIPTION	PART #	QTY.
01	VALVE BODY LOCK VAL	68591	1.00
02	BALL	92549	1.00
03	RELEASE GLAND	68637	1.00
04	O-RING	*	1.00
05	RELEASE SCREW ASM	89435	1.00
06	O-RING	*	1.00
07	BALL	92526	2.00
08	O RING	*	1.00
09	RELIEF VALVE ADJ SCREW	66083	1.00

ITEM #	DESCRIPTION	PART #	QTY.
10	SPRING - RELIEF VALVE	++	1.00
11	CONE - EXT RELIEF	++	1.00
12	SEAT - EXT RELIEF	++	1.00
13	BU-WASHER	*	2.00
14	BALL RETAINER	68589	2.00
15	O-RING	5602106	1.00
16	SPOOL-LOCK VALVE	68636	1.00
17	SEAT	68590	2.00
18	PIPE PLUG	82552	1.00

RELIEF REPLACEMENT KIT (++ = COMPONENTS) -- PART # 55057
 PACKING KIT 3 & 4 WAY LOCK VALVE (* = COMPONENTS) -- PART #54492

(69621SS) 3 WAY LOCKING



ITEM#	DESCRIPTION	PART#	QTY.
01	VLV BODY LOCKING	69573	1.00
02	SEAT - EXT RELIEF	++	1.00
03	CONE - EXT RELIEF	++	1.00
04	SPRING - RELIEF VALVE	++	1.00
05	SCREW	69104	1.00
06	WASHER	69124	1.00
07	RETAINING SLEEVE	69620	1.00
08	O RING	*	1.00
09	BACK-UP WASHER	*	1.00
10	O-RING	*	1.00
11	HEX ST. PIPE PLUG	87145	1.00
12	SPOOL	69574	1.00

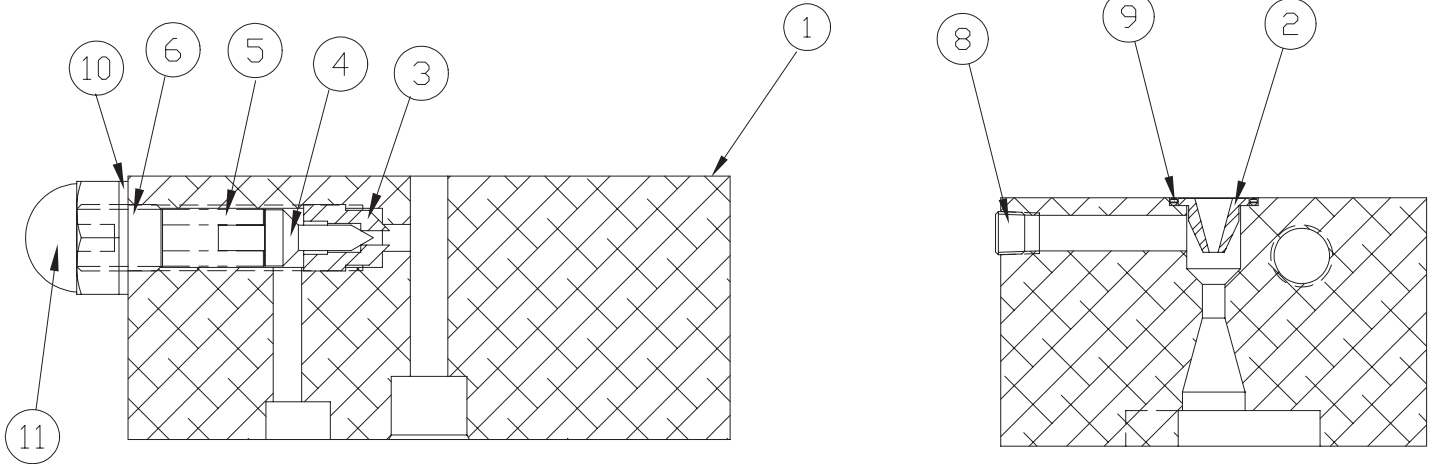
ITEM#	DESCRIPTION	PART#	QTY.
13	GASKET-PLUG	68183	1.00
14	PLUG-SPOOL	68184	1.00
15	BALL	92550	1.00
16	GASKET WASHER	68080	1.00
17	PORT ADAPTER	68187	1.00
18	ACORN NUT	69105	1.00
19	NOZZLE-VALVE	68197	1.00
20	PIPE PLUG 3/8"	84084	2.00
21	PIPE PLUG 1/8"	81093	3.00
NS	1/16 PIPE PLUG-	40049	2.00
23	COMPRESSION SPRING	68188	1.00
24	LOCTITE	41828	0.10

PACKING KIT 3 & 4 WAY LOCK VALVE (* = COMPONENTS) -- PART #54492
 RELIEF REPLACEMENT KIT (++ = COMPONENTS) -- PART # 55057

G4 Series Gas Power Pump

Manifold Sub Assemblies

(69570SS) 3 WAY STANDARD



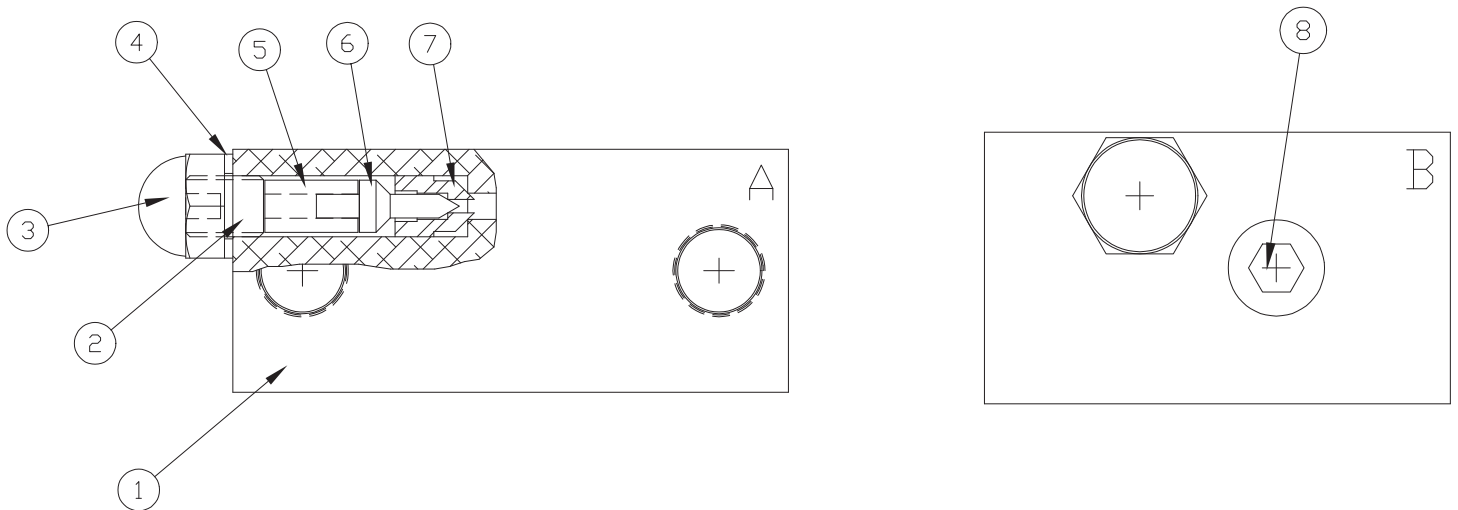
ITEM#	DESCRIPTION	PART#	
		3 WAY MAN. ASM	QTY.
01	RET. VALVE MANIFOLD	69569	1.00
02	NOZZLE-VALVE	68197	1.00
03	SEAT - EXT RELIEF	*	1.00
04	CONE - EXT RELIEF	*	1.00
05	SPRING - RELIEF VALVE	*	1.00
6	ADJUSTING SCREW	69104	1.00

ITEM#	DESCRIPTION	PART#	
		3 WAY MAN. ASM	QTY.
NS	PIPE PLUG	84084	3.00
08	PIPE PLUG-FLUSH	40049	2.00
09	O-RING	5602014	1.00
10	WASHER	69124	1.00
11	ACORN NUT	69105	1.00

NS = NOT SHOWN

RELIEF REPLACEMENT KIT (* = COMPONENTS) -- PART # 55057

(69100SS) 4 WAY STANDARD



ITEM#	DESCRIPTION	PART#	
		4 WAY MAN. ASM	QTY.
01	VALVE MANIFOLD	69099	1.00
02	ADJUSTING SCREW	69104	1.00
03	ACORN NUT	69105	1.00
4	WASHER	69124	1.00

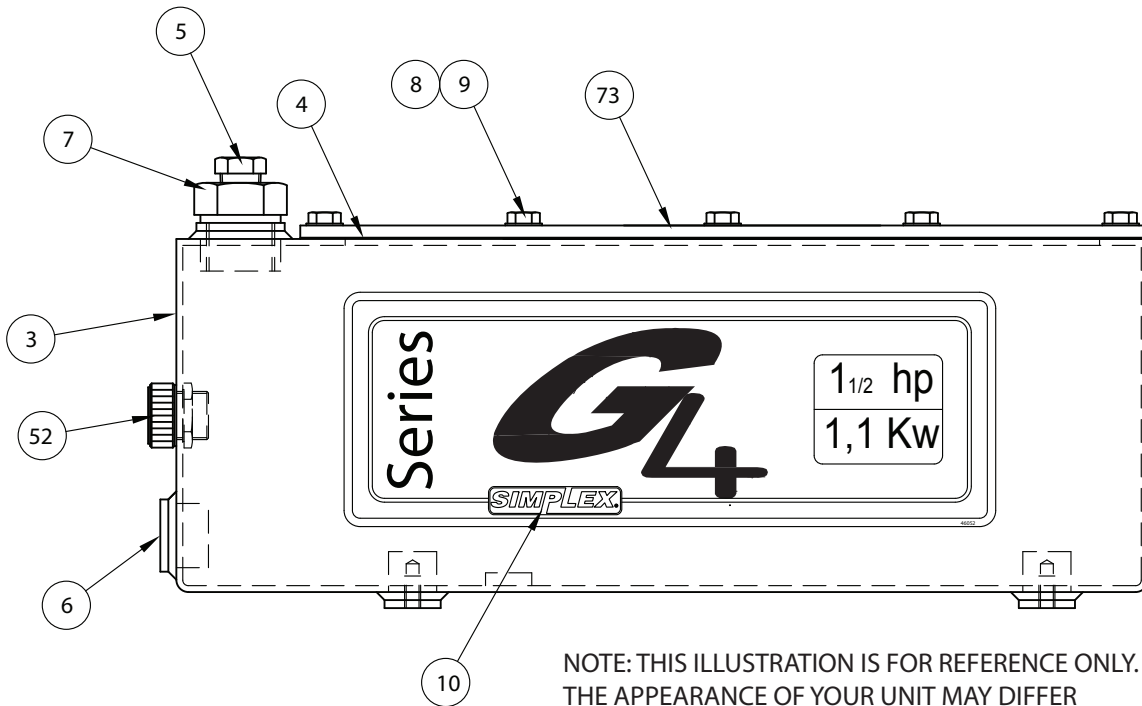
ITEM#	DESCRIPTION	PART#	
		4 WAY MAN. ASM	QTY.
05	SPRING - RELIEF VALVE	*	1.00
06	CONE - EXT RELIEF	*	1.00
07	SEAT - EXT RELIEF	*	1.00
08	PIPE PLUG	84084	2.00

RELIEF REPLACEMENT KIT (* = COMPONENTS) -- PART # 55057

G4 Series Gas Power Pump

Reservoirs

- (45996P) 1.5 GALLON RESERVIOR**
- (46213P) 2.5 GALLON RESERVIOR**
- (46046P) 5.0 GALLON RESERVIOR**
- (46048P) 10 GALLON RESERVIOR**
- (DS1256025) 20 GALLON RESERVIOR**



NOTE: THIS ILLUSTRATION IS FOR REFERENCE ONLY. THE APPEARANCE OF YOUR UNIT MAY DIFFER FROM UNIT SHOWN.

ITEM #	DESCRIPTION	1.5 GALLON	2.5 GALLON	5.0 GALLON	10 GALLON	20 GALLON	QTY.
03	RESERVOIR	45996P	46213P	46046P	46048P	DS1256025	1.00
04	RESERVOIR GASKET	85469	85469	85469	85469	85469	1.00
05	BREATHER VENT 3/8" NPT	46348	46348	46348	46348	46348	1.00
06	PLUG	46697	46697	46697	46697	46697	1.00
07	SAE #12 HEX PLUG WITH PORT	46118	46118	46118	46118	46118	1.00
08	HHCS 1/4-20 x 3/4 LG PLATED	65891	65891	65891	65891	65891	14.00
09	SEALING WASHER	65892	65892	65892	65892	65892	14.00
10	G4 RESERVOIR DECAL	46635	46635	46635	46635	46635	2.00
52	SIGHT GAUGE	46009	46009	46009	46009	46009	1.00
73	COVER PLATE	45905	45905	45905	45905	45905	1.00
NS	PIPE COUPLING 1/4	N/A	N/A	N/A	80241	80241	1.00
NS	NIPPLE	N/A	N/A	N/A	88058	88058	1.00

NS = NOT SHOWN

NOTE: ALL RESERVOIRS ARE POWDER COATED BLACK