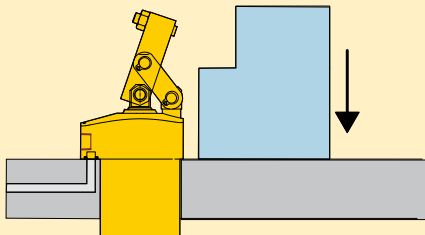


Shown: LUCS-32

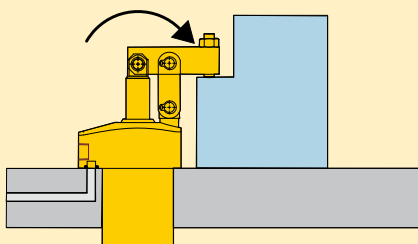


Link clamp allows unobstructed part loading and high clamping forces. The hydraulic cylinders extend to provide clamping force, and retract to allow part removal.

Arm completely retracts to allow part loading.

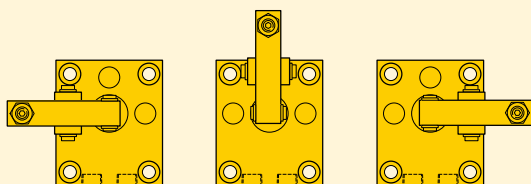


As cylinder extends, arm pivots to clamp part in place.



Arm location is changed easily without the use of tools.

Left Center Right



Quick and accurate clamping action

- Hydraulic cylinder pushes linkage, pivoting clamp arm into position
- Design ensures repeatable clamping location
- Linkage can be re-positioned to clamp at 90, 180, or 270 degrees from ports
- Clamps can be mounted using supplied bolts or held in place with flange nut
- Standard arm or long arm ordered separately.

Product selection

Clamping force ¹⁾	Stroke	Model number	Cylinder effective area	Oil capacity	Standard clamp arm (Sold separately)	Long clamp arm (Sold separately)
kN	mm		cm ²	cm ³		
▼ Single acting						
2,9	18,5	LUCS-32	1,23	2,27	LCAS-32	LCAL-32
7,8	23,4	LUCS-82	3,10	7,28	LCAS-82	LCAL-82
11,8	29,7	LUCS-122	4,13	12,59	LCAS-122	LCAL-122
18,7	34,5	LUCS-192	6,39	22,67	LCAS-192	LCAL-192
27,2	44,7	LUCS-282*	9,61	45,18	LCAS-282	LCAL-282
▼ Double acting						
3	18,5	LUCD-32	1,23	2,27	LCAS-32	LCAL-32
8	23,5	LUCD-82	3,10	7,28	LCAS-82	LCAL-82
12	29,7	LUCD-122	4,13	12,59	LCAS-122	LCAL-122
19	34,5	LUCD-192	6,39	22,67	LCAS-192	LCAL-192
28	44,7	LUCD-282*	9,61	45,18	LCAS-282	LCAL-282

Contact Enerpac for models with imperial threads and SAE ports.

* This product is made to order. Please contact Enerpac for delivery information before specifying in your design.

Dimensions in mm []

Model number	Port Size	C1	C2	C3	D	D1	D2	E
▼ Single acting								
LUCS-32	1/8" BSPP	27,9	36,6	55,1	M48 x 1,5	62,0	55,9	27,9°
LUCS-82	1/8" BSPP	30,0	41,4	65,0	M65 x 1,5	82,0	70,1	31,1°
LUCS-122	1/4" BSPP	37,1	49,5	79,2	M80 x 2	102,1	87,9	28,5°
LUCS-192	1/4" BSPP	39,9	58,4	93,0	M90 x 2	119,1	102,1	28,3°
LUCS-282*	1/4" BSPP	50,0	66,0	110,7	M105 x 2	134,9	119,9	24,8°
▼ Double acting								
LUCD-32	1/8" BSPP	27,9	36,6	55,1	M48 x 1,5	62,0	55,9	27,9°
LUCD-82	1/8" BSPP	30,0	41,4	65,0	M65 x 1,5	82,0	70,1	31,1°
LUCD-122	1/4" BSPP	37,1	49,5	79,2	M80 x 2	102,1	87,9	28,5°
LUCD-192	1/4" BSPP	39,9	58,4	93,0	M90 x 2	119,1	102,1	28,3°
LUCD-282*	1/4" BSPP	50,0	66,0	110,7	M105 x 2	134,9	119,9	24,8°

Contact Enerpac for models with imperial threads and SAE ports.

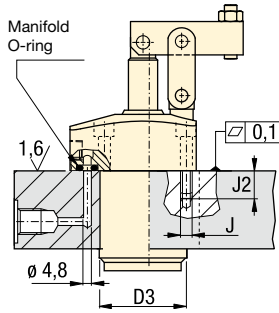
* This product is made to order. Please contact Enerpac for delivery information before specifying in your design.

Installation dimensions in mm

Clamp ¹⁾ force kN	Fixture hole Ø D3	Mounting thread J	Min. depth J2	Manifold O-ring ²⁾ ARP No. or Inside Ø x thickness
3	48,3	M6 x 1,0	16,5	-010
8	65,3	M8 x 1,0	19,0	-010
12	80,3	M8 x 1,0	19,0	-010
19	90,5	M10 x 1,25	22,5	-010
28	105,5	M12 x 1,25	24,0	-010

¹⁾ With standard clamp arm.
²⁾ Polyurethane, 92 Durometer

Note: Mounting bolts and O-rings included.

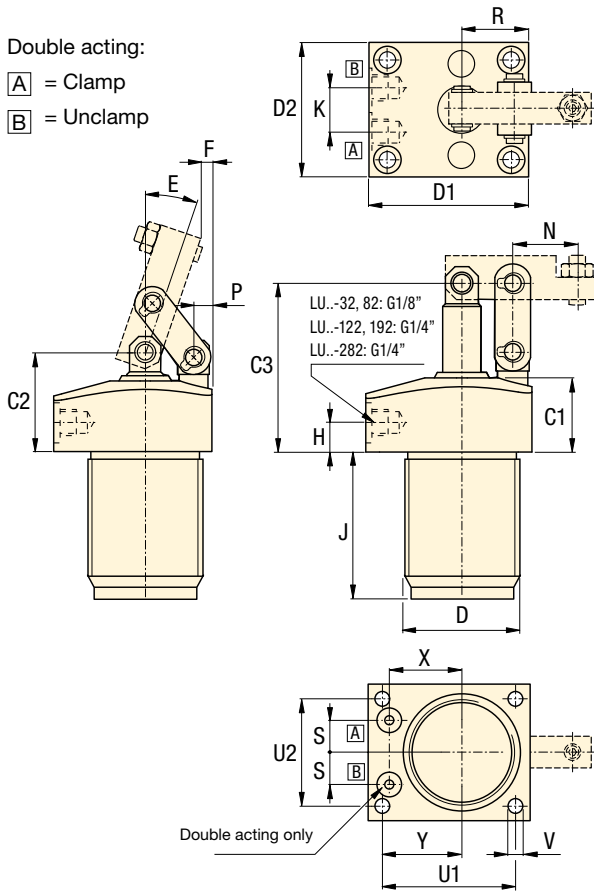


all models

Dimensions shown with standard clamp arm.

Double acting:

- A** = Clamp
- B** = Unclamp



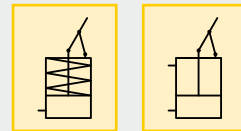
	F	H	J	K	N	P	R	S	U1	U2	V Ø	X	Y	kg
Single acting ▼														
1,0	10,9	47,0	-	23,6	8,4	27,9	10,4	52,1	46,0	6,6	28,7	29,0	1,2	
5,1	10,9	63,0	-	31,8	8,9	35,1	14,0	68,1	55,9	8,1	38,5	39,9	2,5	
0,8	11,9	71,1	-	37,6	11,9	43,9	16,1	87,9	73,9	8,1	44,2	51,1	4,5	
0,8	15,0	87,9	-	41,4	15,0	51,1	18,1	101,1	82,0	10,4	49,8	58,9	6,9	
2,0	20,1	99,1	-	51,1	16,0	59,9	20,9	115,1	100,1	13,0	57,3	65,0	11,7	
Double acting ▼														
1,0	10,9	47,0	20,1	23,6	8,4	27,9	21,6	52,1	46,0	6,6	20,5	29,0	1,2	
5,1	10,9	63,0	23,9	31,8	8,9	35,1	25,4	68,1	55,9	8,1	30,3	39,9	2,5	
0,8	11,9	71,1	30,0	37,6	11,9	43,9	26,4	87,9	73,9	8,1	37,7	51,1	5,0	
0,8	15,0	87,9	-	41,4	15,0	51,1	28,2	101,1	82,0	10,4	48,9	58,9	6,9	
2,0	20,1	99,1	38,1	51,1	16,0	59,9	30,0	115,1	100,1	13,0	52,0	65,0	11,7	

Clamp force: 2,9 - 28 kN

Stroke: 18,5 - 44,7 mm

Pressure: 35 - 350 bar

- E** Cilindros Amarre de enlace
- F** Bride basculante
- D** Gelenkspanner



Options

Clamp arms

57 ▶

Work supports

43 ▶

Important

Single-acting cylinders use a regenerative circuit; oil is sent to both sides of the piston at the same time. This eliminates the breather port, reducing damage from coolant and contamination.

Clamp arm should be parallel to cylinder mounting surface within 3° to avoid damage to cylinder and linkage. Use the included set screw to adjust clamp arm alignment.

Clamp arms for link clamps

Shown: LCAS-32

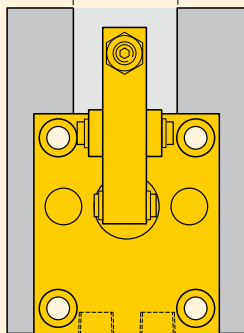


Standard arms are readily available from Enerpac to meet most applications. In applications that require a custom designed arm, the machining information is supplied on page 57.

Important

Clamp point must be within the boundaries of the anchor links on the clamp. Clamping outside of this area will cause damage to the linkage, leading to premature failure.

Allowable clamping area

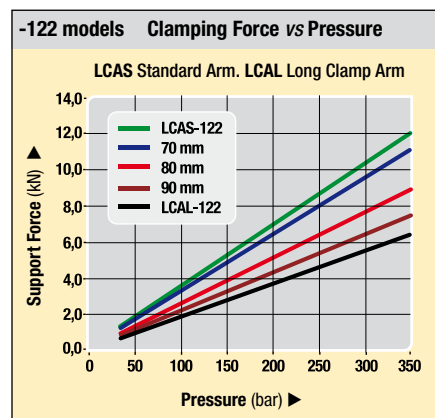
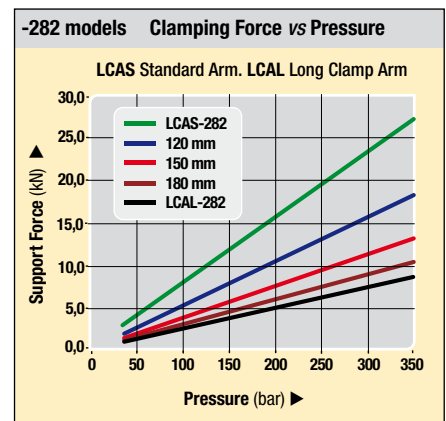
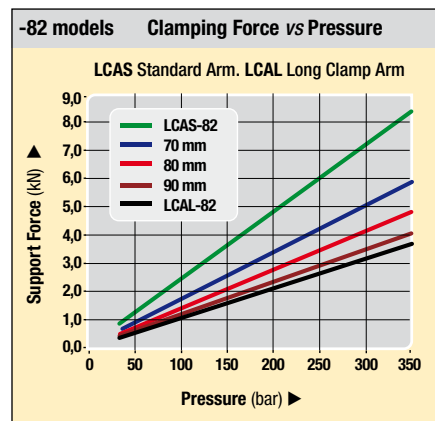
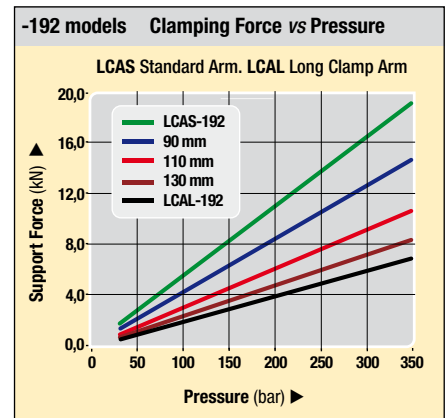
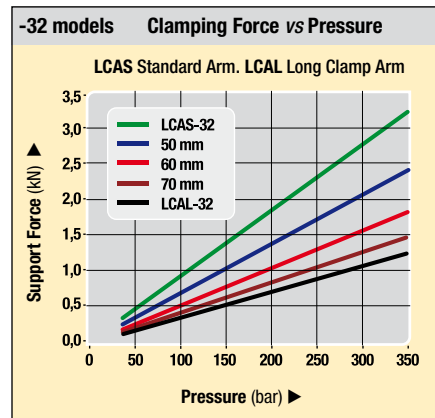


Standard or custom built

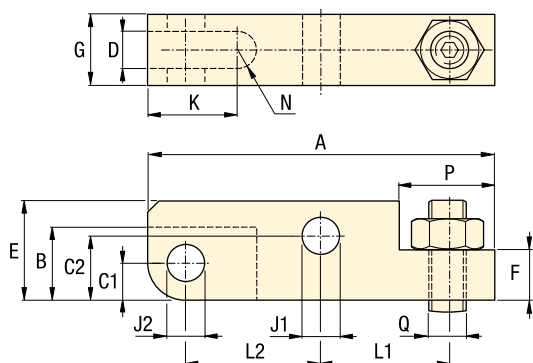
- Available from Enerpac in standard or extended length
- Standard arm includes set screw and lock nut
- Long arm is machinable
- Make your own custom arm to suit specific applications.

Pressure vs clamping force

Different length clamp arms will determine the amount of clamping force transferred to the workpiece. As the length increases, the clamping force decreases.



LCAS models Standard Arm

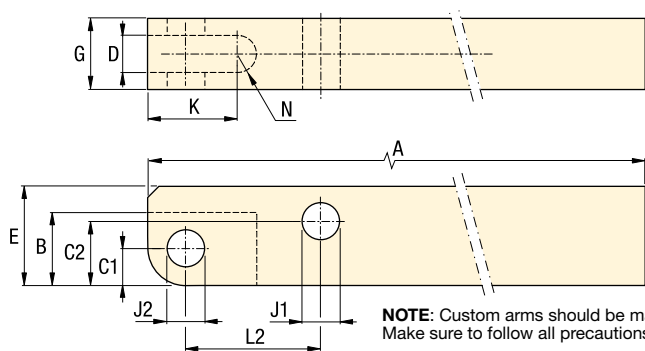


Dimensions in mm []

Clamp capacity kN	Model number	A	B	C1	C2	D	E	F	G
▼ Standard clamp arms									
3	LCAS-32	54,0	13,0	6	9,5	6	16	8	11,85
8	LCAS-82	74,5	17,5	8	15,5	10	25	13	18,85
12	LCAS-122	87,5	22,0	10	19,5	11	32	16	21,85
19	LCAS-192	102,5	26,0	11	24,0	13	38	22	24,85
28	LCAS-282	125,0	30,5	13	29,0	16	45	27	31,85

Clamp. capacity kN	Model number	J1	J2	K	L1	L2	N	P	Q
▼ Standard clamp arms									
3	LCAS-32	6,02-6,07	6,02-6,07	13	23,5	18,5	3	13	M6 x 1,0
8	LCAS-82	10,05-10,10	8,05-8,10	16	32,0	24,5	5	22	M10 x 1,5
12	LCAS-122	12,05-12,10	10,05-10,10	20	37,5	30,0	5,5	25	M12 x 1,75
19	LCAS-192	15,05-15,10	12,05-12,10	24	41,5	36,0	6,5	31	M16 x 2,0
28	LCAS-282	18,05-18,10	15,05-15,10	28	51,0	44,0	8	38	M20 x 2,5

LCAL models Long Arm



NOTE: Custom arms should be manufactured using this print. Make sure to follow all precautions listed.

Dimensions in mm []

Clamp. capacity kN	Model number	A	B	C1	C2	D	E	G	J1	J2	K	L2	N
▼ Long clamp arms													
3	LCAL-32	85	13,0	6	9,50	6	16	11,85	6,02-6,07	6,02-6,07	13	18,5	3,0
8	LCAL-82	105	17,5	8	15,50	10	25	18,85	10,05-10,10	8,05-8,10	16	24,5	5,0
12	LCAL-122	110	22,0	10	19,50	11	32	21,85	12,05-12,10	10,05-10,10	20	30,0	5,5
19	LCAL-192	160	26,0	11	24,00	13	38	24,85	15,05-15,10	12,05-12,10	24	36,0	6,5
28	LCAL-282	220	30,5	13	29,00	16	45	31,85	18,05-18,10	15,05-15,10	28	44,0	8,0

Force: 3 - 28 kN

Pressure: 35 - 350 bar

- E** Brazos de amarre
- F** Bras de bridage
- D** Spannarme

Options

Work supports [43 ▶](#)

Accessories [86 ▶](#)

Important

Clamp arm should be parallel to cylinder mounting surface within 3° to avoid damage to cylinder and linkage. Use the included set screw to adjust clamp arm alignment.

