



WWW.TKSIMPLEX.COM

TECHNICAL OPERATION / PART SHEET

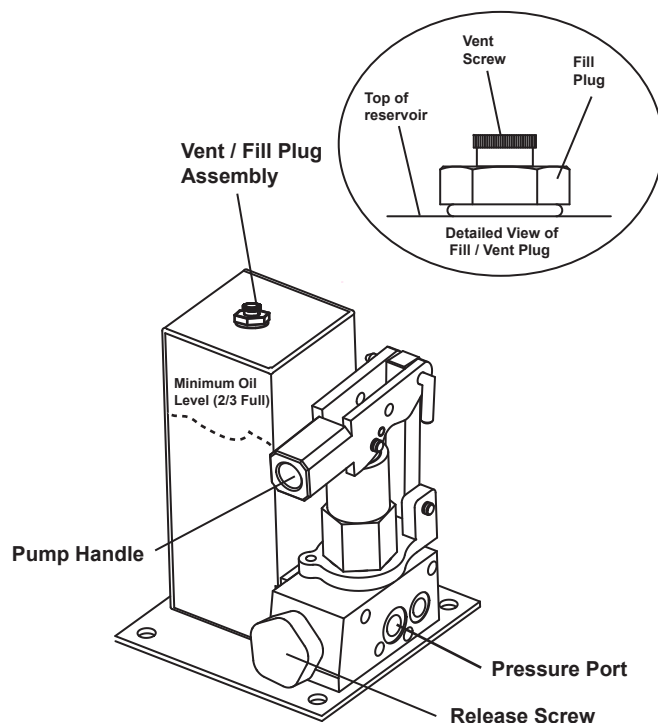
P160 Series Hand Pump

PART SHEET NUMBER	REVISION NUMBER	DATE CODE RANGE	DOCUMENT DATE
54459	C	N/A	08/13

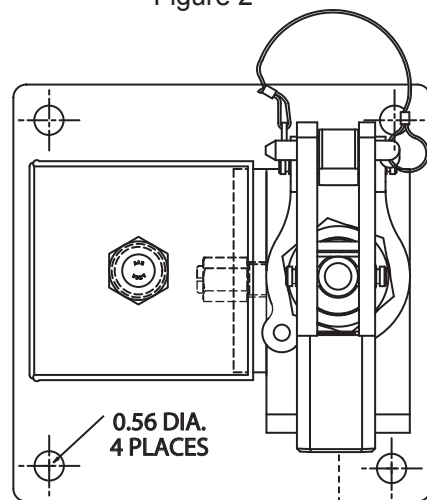
CAUTION: READ THESE INSTRUCTIONS PRIOR TO OPERATING THE PUMP

OPERATING INSTRUCTIONS

1. Open FILL PLUG on the hand pump and check OIL LEVEL in the reservoir. The reservoir should be approximately 2/3 FULL. Use a clean wooden dip stick to check oil level. Only use SIMPLEX Hydraulic Fluid.
2. Close fill plug and open AIR VENT approximately one full turn. Remove 3/8" pipe plug from outlet port of the pump. Connect pressure line to cylinder or system and to the outlet of the pump. (pressure port). Refer to figure two(2) for mounting hole sizing and procedure.
3. BLEED AIR from system by opening the release screw and by operating the PUMP HANDLE approximately 12 TIMES through full stroke. Close the release screw. Actuate sufficiently to raise the cylinder at least one half stroke (make sure that the hand pump is higher than the cylinder). Then by opening the release screw and retracting the cylinder, all air trapped in the connecting line and cylinder should be completely expelled.
4. The RELEASE SCREW must be FULLY TIGHTENED for RAISING THE LOAD and HOLDING PRESSURE. To RELEASE PRESSURE or lower the load from the cylinder or hydraulic system, OPEN the RELEASE SCREW to allow oil to return to the reservoir.

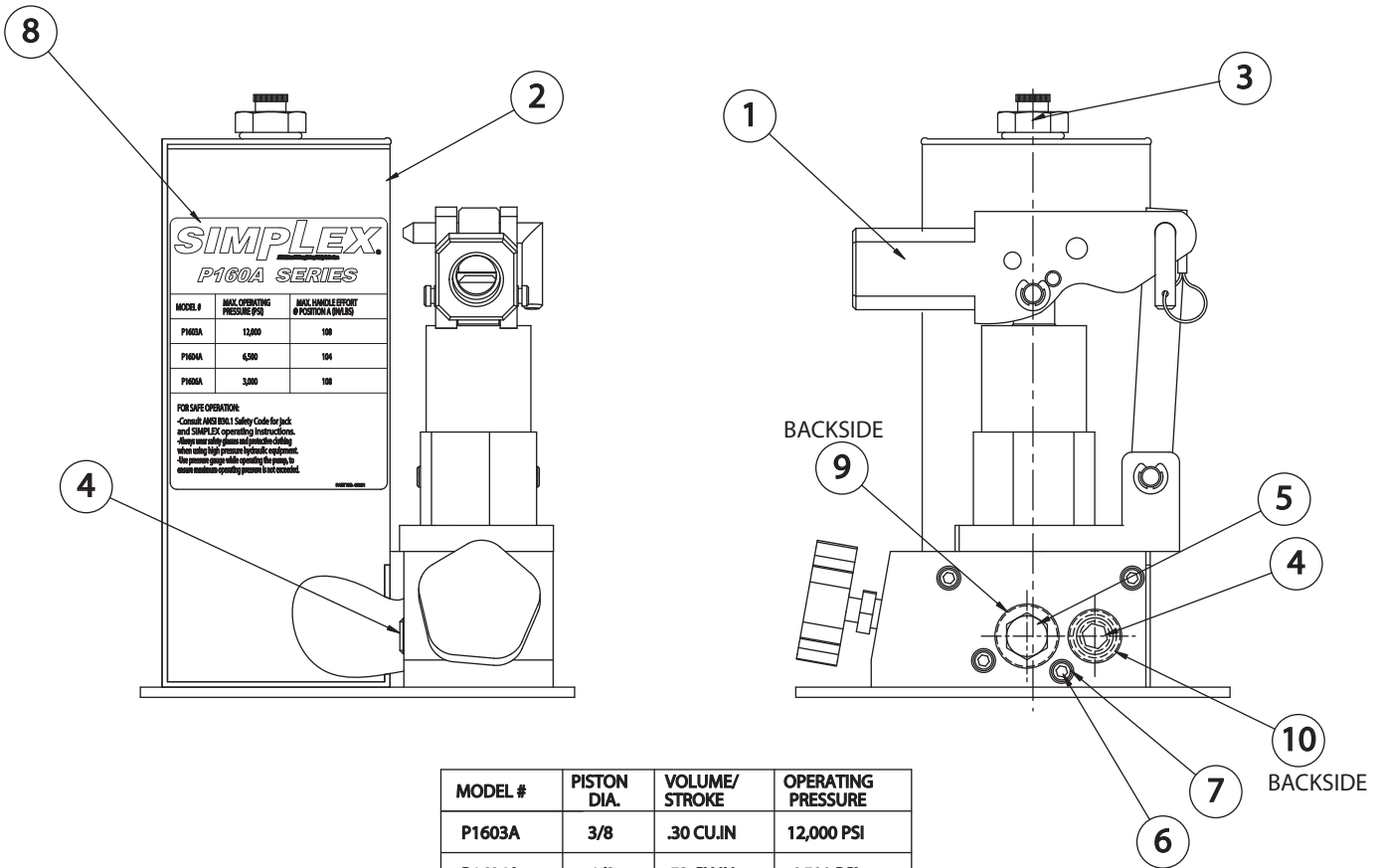


Mounting Procedure
Figure 2



Use a 1/4" Allen Wrench to loosen set screw, then remove knob from shaft to mount hardware using the appropriate fasteners.

P160A SERIES HAND PUMPS



MODEL #	PISTON DIA.	VOLUME/STROKE	OPERATING PRESSURE
P1603A	3/8	.30 CU.IN	12,000 PSI
P1604A	1/2	.53 CU.IN	6,500 PSI
P1606A	3/4	1.33 CU.IN	3,000 PSI

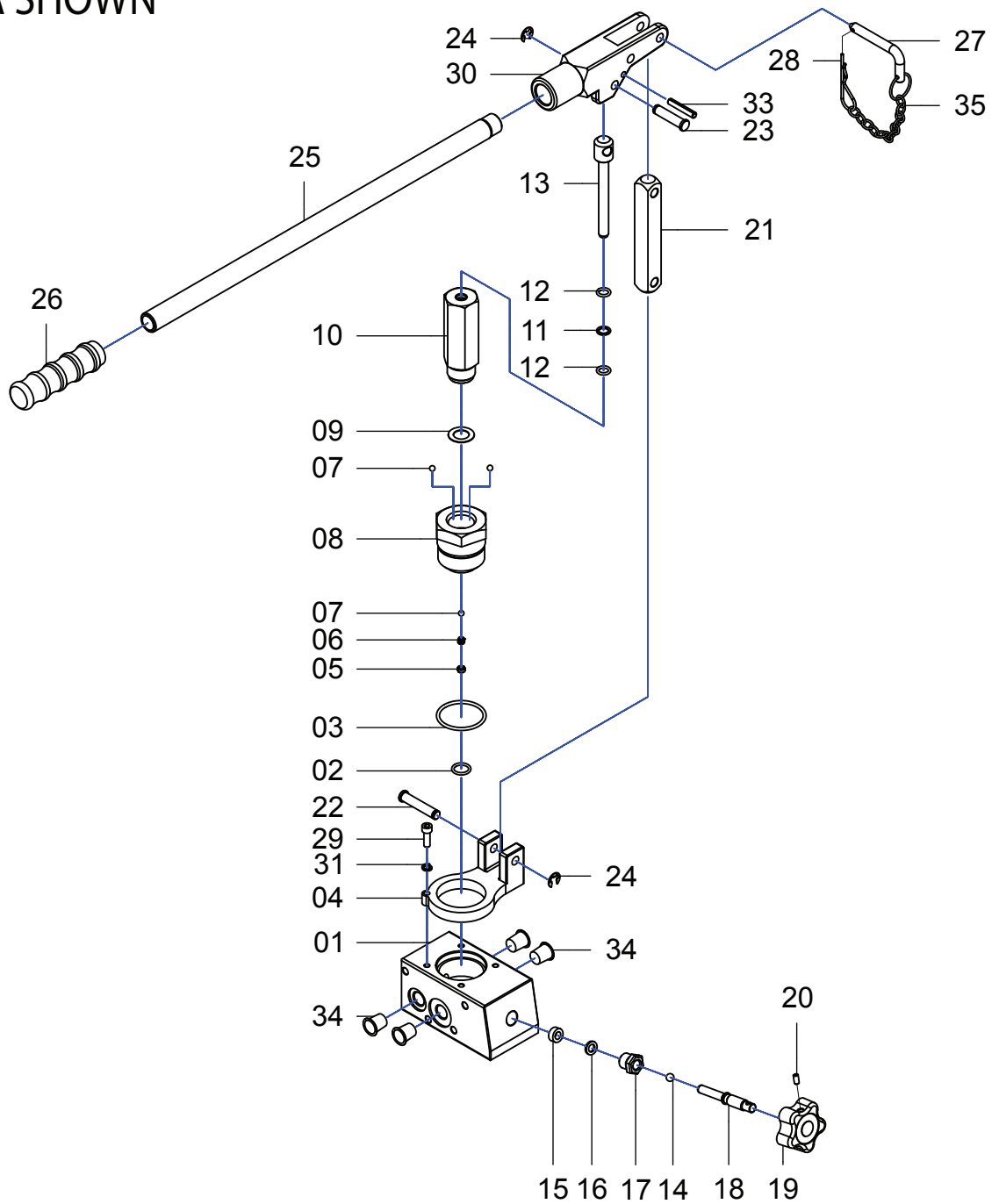
ITEM	DESCRIPTION	P1603A	P1604A	P1606A	QTY
01	HAND PUMP ASSEMBLY	45194	45195	45196	1.00
02	RESERVOIR WELDMENT	45814	45814	45814	1.00
03	BREATHER ASSEMBLY	69107	69107	69107	1.00
04	PIPE PLUG 3/8" FLUSH	84084	84084	84084	2.00
05	HEX ST. PIPE PLUG 3/8 NPTF	87145	87145	87145	1.00
06	SHCS 1/4-20 X 2.5 LG.	45606	45606	45606	4.00
07	LOCK WASHER 1/4	93941	93941	93941	4.00
08	MODEL DECAL P160A SERIES	45831	45831	45831	1.00
09	O-RING 1 1/16 x 1 1/4	*	*	*	1.00
10	O-RING 13/16 X 1	*	*	*	1.00
	REPAIR KIT FOR COMPLETE ASSEMBLY INCLUDES BOTH ABOVE O-RINGS AND KIT FOR PUMP PORTION	54682	54683	54684	1.00

(* = CONTENTS, ALSO LISTED ON PAGE 4)



To maintain your warranty:
 Have your products inspected and repaired by an SIMPLEX Authorized Service Center, visit, www.tksimplex.com to locate the nearest one.

P10003A SHOWN



To maintain your warranty:
Have your products inspected and repaired by an **SIMPLEX** Authorized Service Center, visit,
www.tksimplex.com to locate the nearest one.

REF NO.	P10003A	P10004A	P10006A	DESCRIPTION	QTY
01	6045065	6045065	6045065	Pump Block Manifold	1
02	*	*	*	O-Ring	1
03	*	*	*	O-Ring	1
04	6045067	6045067	6045067	Link Swivel	1
05	6045055	6045055	6045055	Bypass Screw	1
06	6045068	6045068	6045068	Spring	1
07	6045053	6045053	6045053	Check Ball	3
08	6045069	6045069	6045069	Check Valve	1
09	*	*	*	Brass Washer	1
10	6045071	6045091	6045093	Pump Housing	1
11	*	*	*	Back-Up Ring	1
12	*	*	*	O-Ring	2
13	6045074	6045092	6045096	Piston	1
14	6045075	6045075	6045075	Check Ball	1
15	*	*	*	Oil Seal	1
16	*	*	*	Washer	1
17	6067038	6067038	6067038	Packing Nut	1
18	6045076	6045076	6045076	Release Valve Bolt	1
19	6045077	6045077	6045077	Release Valve Knob	1
20	6045078	6045078	6045078	Set Screw	1
21	6045079	6045079	6045079	Link Connector	1
22	6045080	6045080	6045080	Pin	1
23	6045081	6045081	6045081	Pin	1
24	*	*	*	Retaining Ring	2
25	6045082	6045082	6045082	Handle	1
26	6067025	6067025	6067025	Handle Grip	1
27	6045083	6045083	6045083	L-Pin	1
28	6045084	6045084	6045084	Hair Cotter Pin	1
29	6045085	6045085	6045085	Screw	1
30	6045086	6045086	6045086	Yoke	1
31	6045087	6045087	6045087	Spring Washer	1
33	6045088	6045088	6045088	Pin	1
34	6045089	6045089	6045089	Cap	4
35	6045090	6045090	6045090	Connecting Chain	1
36	6045106	6045106	6045106	Made in Taiwan Decal	1
*	54437	54438	54439	Seal Kit	1



To maintain your warranty:

Have your products inspected and repaired by an SIMPLEX Authorized Service Center, visit, www.tksimplex.com to locate the nearest one.