



# Repair Parts Sheet

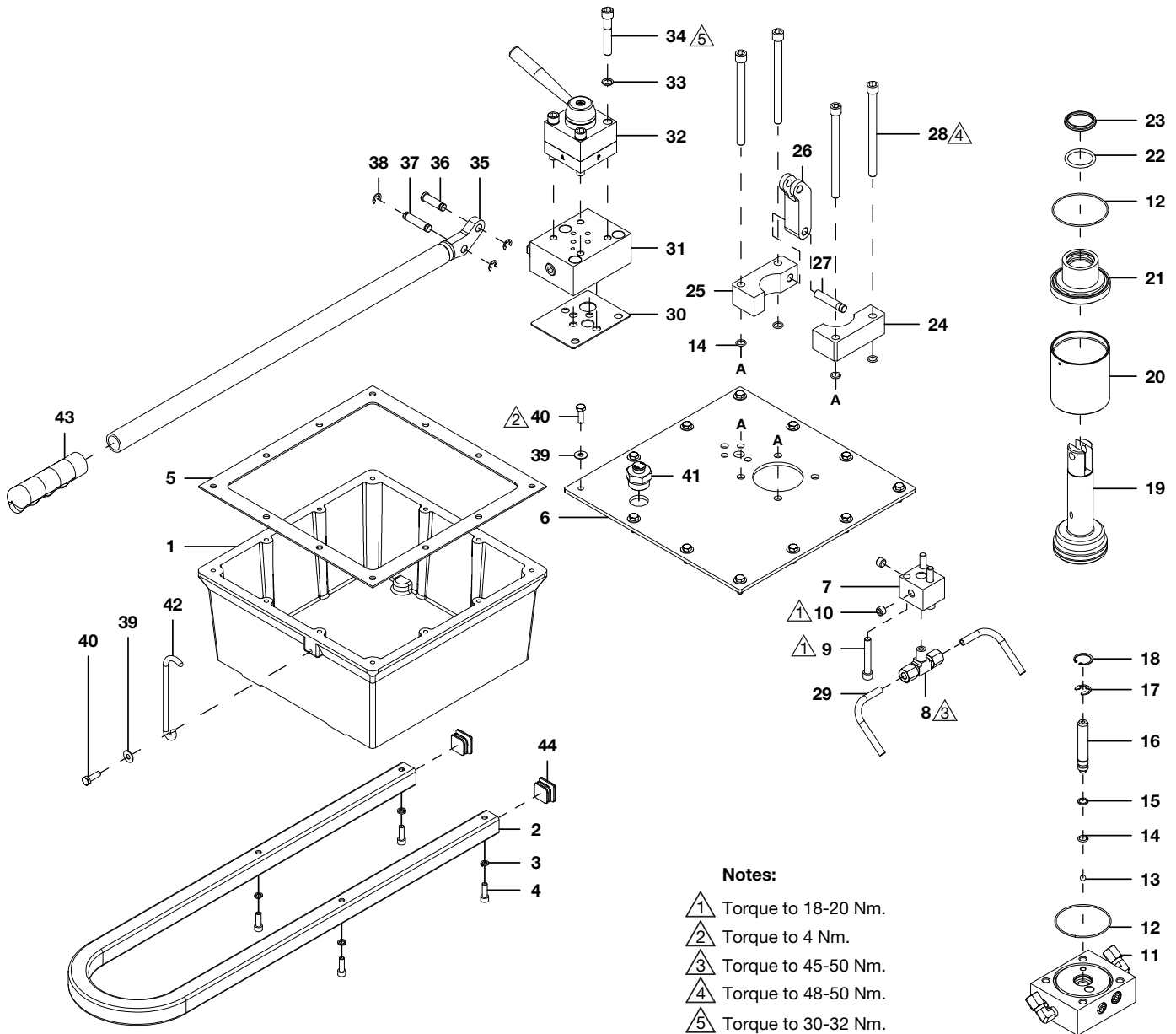
## Hand Pump P461D

TD219 Rev. A 12/2019

Product Date Code Beginning With "B"

**To Protect Your Warranty, Use Only SIMPLEX Hydraulic Oil.**

Simplex recommends that all kit components be installed to ensure optimum performance of the repaired product.



Repair Parts List for P461D			
Item No.	Part Number	Qty.	Description
1	✚ 6067195	1	Reservoir Asm., 2 Gallon
2	6067149	1	Hand Pump Base
3	6067278	4	Spring Washer
4	6067262	4	Screw
5	✚★ 6067230	1	Reservoir Gasket
6	6067146	1	Cover Plate, 1 Gallon
7	6067143	1	Junction Block
8	6067304	1	Tee
9	6067260	3	Screw
10	6067252	2	Set Screw
11	6067129	1	Pump Body Asm.
12	✚★ 6067227	2	O-Ring
13	✚ 6067302	1	Steel Ball
14	✚★ 6067215	5	O-Ring
15	✚★ 6067210	1	Back-Up Ring
16	✚ 6067175	1	High Pressure Piston
17	✚ 6067265	1	E-Ring
18	✚ 6067272	1	Retaining Ring
19	✚ 6067131	1	Low Pres. Piston Asm.
20	6067150	1	Pump Cylinder
21	✚ 6067172	1	Bearing
22	✚★ 6067228	1	O-Ring
23	✚★ 6067224	1	Wiper
24	6067144	1	Pump Collar

Repair Parts List for P461D (Continued)			
Item No.	Part Number	Qty.	Description
25	6067145	1	Pump Collar
26	6067194	1	Pumping Link
27	6067173	1	Pivot Pin
28	6067256	4	Screw
29	6067151	2	Tube Asm.
30	★ 6067226	1	Valve Gasket
31	6067135	1	Valve Mounting Block
32	6067138	1	Valve Asm.
33	★ 6067291	4	Copper Washer
34	6067258	4	Cap Screw
35	* 6067130	1	Pump Handle
36	* 6067176	1	Clevis Pin
37	* 6067174	1	Pist Pin
38	* 6067274	3	E-Ring
39	6067298	13	Washer
40	6067249	13	Screw
41	6067133	1	Breather Asm.
42	6067292	1	Handle Latch
43	* 6067223	1	Rubber Grip
44	6067229	2	Square Hole Plug
45	◆ 68259	2	Simplex Logo Decal
46	◆ DD7735026	1	P461D Model Decal
47	◆ DC7887026	1	CE Safety Label Decal

Notes:

- ★ Included in Seal Kit DD8117900.
- ◆ Included in Decal Kit DD8118900.
- \* Included in Handle kit DD8114900.
- ✚ Included in Reservoir Kit DD8116900.
- ✚ Included in Plunger Kit DD8115900.



N86 W12500 Westbrook Crossing  
Menomonee Falls, WI 53051  
Phone - USA Only: 1 (800) 323-9114  
Phone - Inside/Outside USA: 1 (262) 293-1575  
Fax: 1 (262) 597-1127  
www.tksimplex.com