



# Repair Parts Sheet

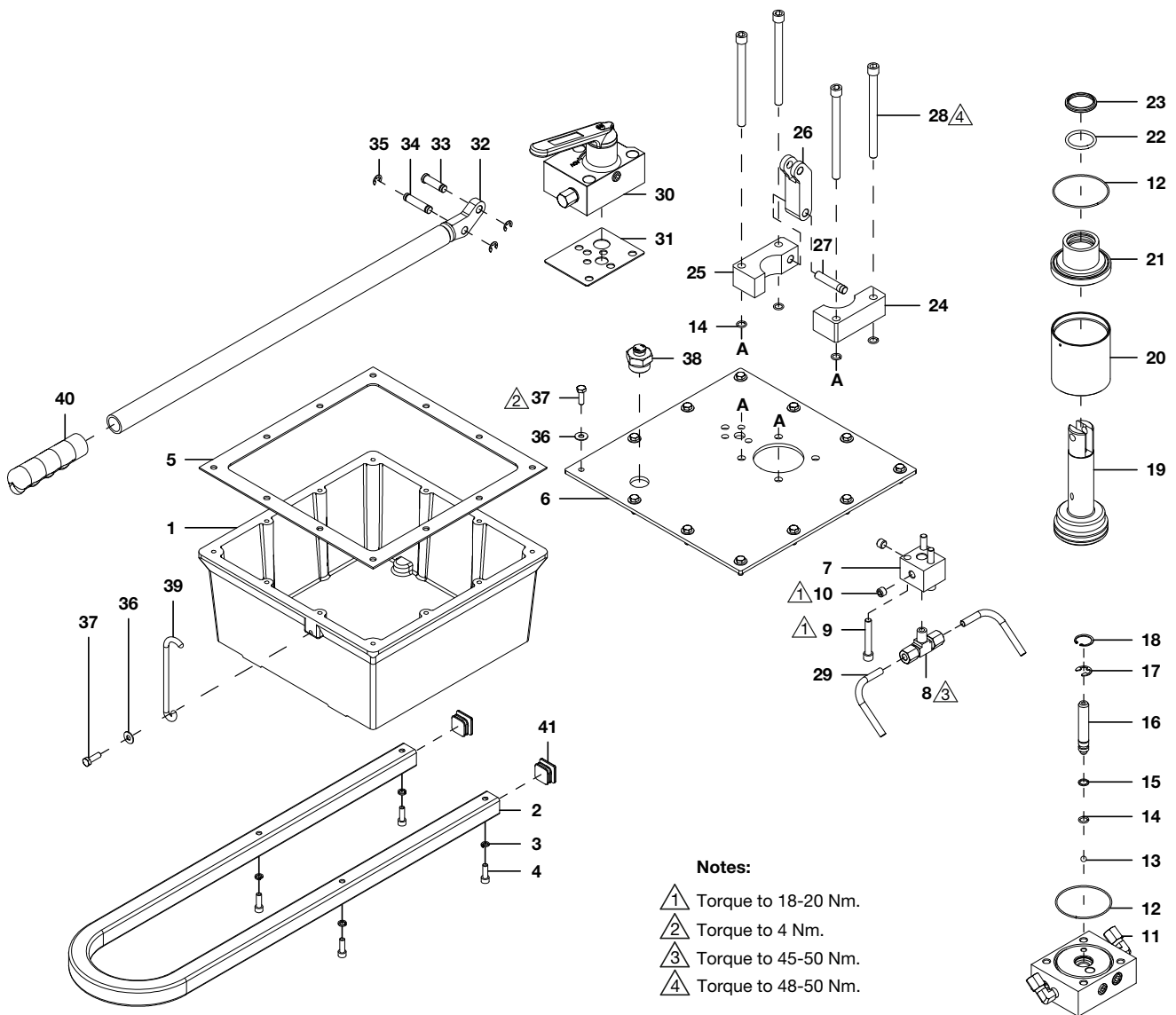
## Hand Pump P461

54471 Rev. C 12/2019

Product Date Code Beginning With "B"

**To Protect Your Warranty, Use Only SIMPLEX Hydraulic Oil.**

Simplex recommends that all kit components be installed to ensure optimum performance of the repaired product.



Repair Parts List for P461			
Item No.	Part Number	Qty.	Description
1	❖ 6067195	1	Reservoir Asm., 1 Gal.
2	6067149	1	Hand Pump Base
3	6067278	4	Spring Washer
4	6067262	4	Screw
5	❖★ 6067230	1	Reservoir Gasket
6	6067146	1	Cover Plate, 1 Gallon
7	6067143	1	Junction Block
8	6067304	1	Tee
9	6067257	3	Screw
10	6067252	2	Set Screw
11	6067129	1	Pump Body Asm.
12	†★ 6067227	2	O-Ring
13	† 6067302	1	Steel Ball
14	†★ 6067215	5	O-Ring
15	†★ 6067210	1	Back-Up Ring
16	† 6067175	1	High Pressure Piston
17	† 6067265	1	E-Ring
18	† 6067272	1	Retaining Ring
19	† 6067131	1	Low Pres. Piston Asm.
20	6067150	1	Pump Cylinder
21	† 6067172	1	Bearing
22	†★ 6067228	1	O-Ring

Repair Parts List for P461 (Continued)			
Item No.	Part Number	Qty.	Description
23	†★ 6067224	1	Wiper
24	6067144	1	Pump Collar
25	6067145	1	Pump Collar
26	6067194	1	Pumping Link
27	6067173	1	Pivot Pin
28	6067256	4	Screw
29	6067151	2	Tube Asm.
30	6067132	1	2 Way Valve Asm.
31	★ 6067226	1	Valve Gasket
32	* 6067130	1	Pump Handle
33	* 6067176	1	Clevis Pin
34	* 6067174	1	Pist Pin
35	* 6067274	3	E-Ring
36	6067298	13	Washer
37	6067249	13	Screw
38	6067133	1	Breather Asm.
39	6067292	1	Handle Latch
40	* 6067223	1	Rubber Grip
41	6067229	2	Square Hole Plug
42	◆ 68259	2	Decal, Simplex Logo
43	◆ DD7734026	1	Decal, Model P461
44	◆ DC7887026	1	Decal, CE Safety Label

Notes:

- ★ Included in Seal Kit DD8112900.
- ◆ Included in Decal Kit DD8113900.
- \* Included in Handle Kit DD8114900.
- ❖ Included in Reservoir Kit DD8116900.
- † Included in Plunger Kit DD8115900.



N86 W12500 Westbrook Crossing  
Menomonee Falls, WI 53051  
Phone - USA Only: 1 (800) 323-9114  
Phone - Inside/Outside USA: 1 (262) 293-1575  
Fax: 1 (262) 597-1127  
[www.tksimplex.com](http://www.tksimplex.com)