

## Specifications

---

Units: **Imperial** Metric

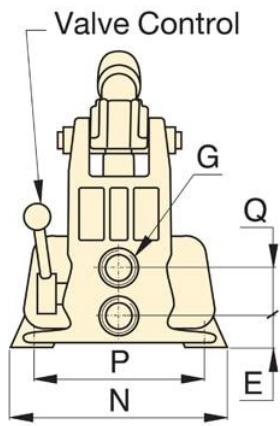
Maximum Operating Pressure (psi)	10,000
Pressure Rating (psi) 1st Stage	400
Pressure Rating (psi) 2nd Stage	10,000
Cylinder Compatability	Double-acting
Pump Type	Two Speed
Reservoir Capacity (in <sup>3</sup> )	155
Usable Oil Capacity (in <sup>3</sup> )	155
Maximum Flow at Rated Pressure	.151 in3/stroke
Oil Displacement per Stroke (in <sup>3</sup> ) 1st Stage	2.4
Oil Displacement per Stroke (in <sup>3</sup> ) 2nd Stage	0.151
Maximum Handle Effort (lbs)	95
Piston Stroke (in)	1
Valve Operation	Manual
Power Source	Manual
Weight (lbs)	22

## Dimensions

---

Units: **Imperial** Metric

Dimension A (in)	13.3
Dimension B (in)	21.75
Dimension C (in)	1.78
Dimension D (in)	5.25
Dimension E (in)	0.81
Dimension G (in)	3/8" - 18 NPTF
Dimension H (in)	20.75
Dimension J (in)	2.19
Dimension L (in)	9
Dimension N (in)	7.12
Dimension P (in)	6.02
Dimension Q (in)	1.44
Dimension S (in)	0.41



**P-842**

