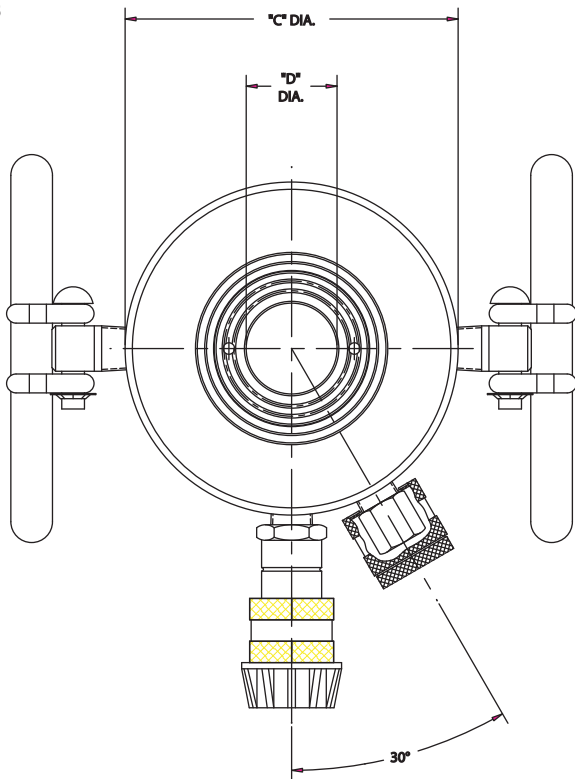


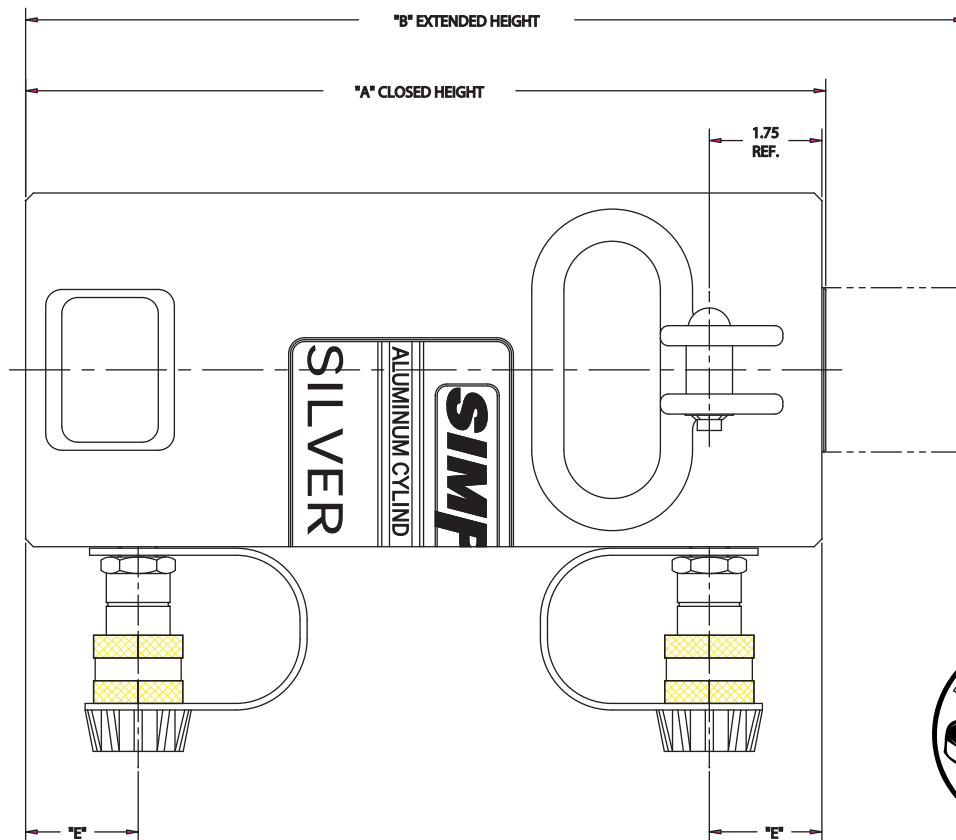


RACD 100 / 150 TON SERIES REPAIR PART SHEET

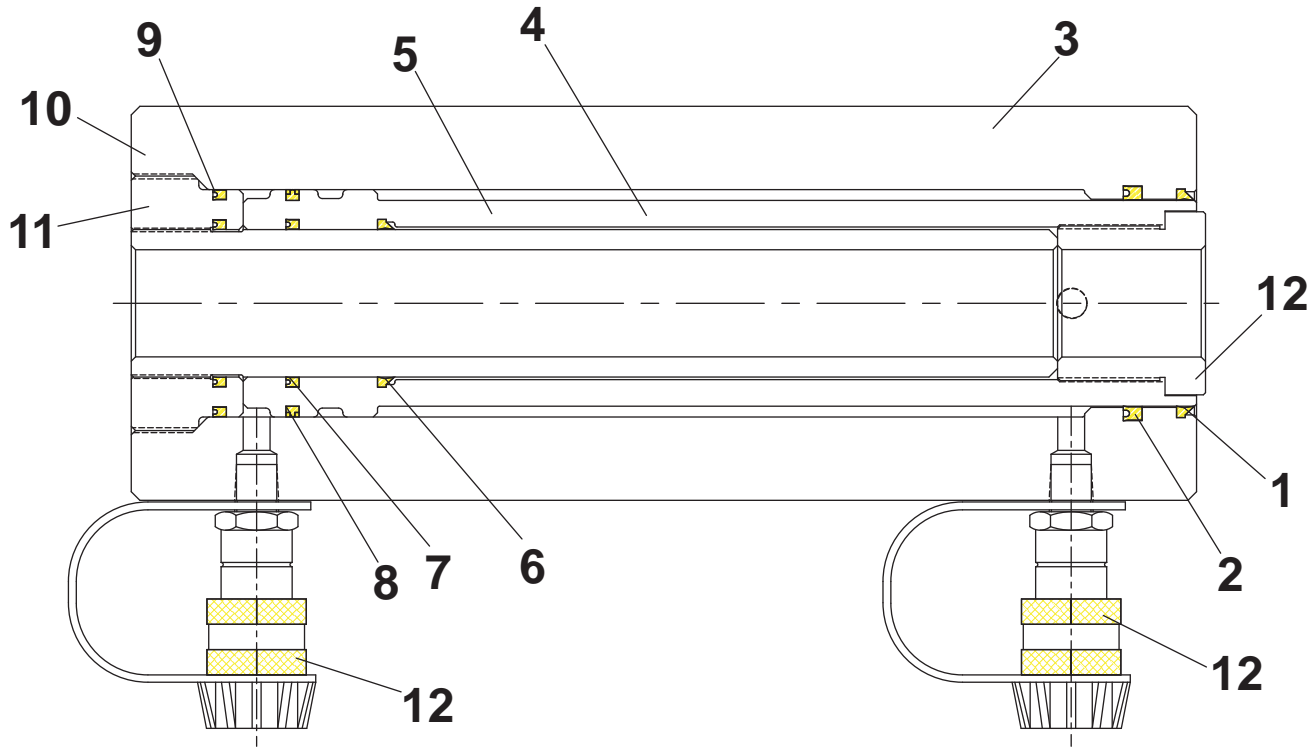
PART SHEET #: 54259
REV. A
02/05



MODEL NO.	CYLINDER CAPACITY	"A"	"B"	"C"	"D"	"E"
RACD1002	100 TONS	10.00	12.00	11.00	3.50	2.50
RACD1004	100 TONS	12.00	16.00			
RACD1006	100 TONS	14.00	20.00			
RACD10010	100 TONS	18.00	28.00	12.00	3.50	2.50
RACD1502	150 TONS	10.00	12.00			
RACD1506	150 TONS	14.00	20.00			
RACD15010	150 TONS	18.00	28.00			



RACD 100 / 150 TON SERIES CYLINDER PART LIST



RACD100 TON SERIES

ITEM NO.	QTY.	PART DESCRIPTION	TK NO. 45218	TK NO. 45219	TK NO. 45220	TK NO. 45221
1	1	ROD WIPER	6050048	6050048	6050048	6050048
2	1	ROD SEAL	6050049	6050049	6050049	6050049
3	1	HOUSING	6050050	6050087	6050090	6050093
4	1	CENTER SLEEVE	6050051	6050088	6050091	6050094
5	1	PISTON	6050052	6050089	6050092	6050095
6	1	PISTON WIPER	6050053	6050053	6050053	6050053
7	1	PISTON POLYPACK	6050054	6050054	6050054	6050054
8	1	PISTON T-SEAL	6050055	6050055	6050055	6050055
9	1	POLYPACK	6050056	6050056	6050056	6050056
10	1	POLYPACK	6050057	6050057	6050057	6050057
11	1	THREADED BOTTOM	6050058	6050058	6050058	6050058
12	1	SADDLE	6050059	6050059	6050059	6050059
13	2	COUPLER	40858	40858	40858	40858
14	2	DUST CAP	CR215	CR215	CR215	CR215
		100 TON SEAL KIT	54295	54295	54295	54295

RACD150 TON SERIES

ITEM NO.	QTY.	PART DESCRIPTION	TK NO. 45222	TK NO. 45223	TK NO. 45224
1	1	ROD WIPER	6050060	6050060	6050060
2	1	ROD SEAL	6050061	6050061	6050061
3	1	HOUSING	6050062	6050096	6050099
4	1	CENTER SLEEVE	6050063	6050097	6050100
5	1	PISTON	6050064	6050098	6050101
6	1	PISTON WIPER	6050065	6050065	6050065
7	1	PISTON POLYPACK	6050066	6050066	6050066
8	1	PISTON T-SEAL	6050067	6050067	6050067
9	1	POLYPACK	6050068	6050068	6050068
10	1	POLYPACK	6050069	6050069	6050069
11	1	THREADED BOTTOM	6050070	6050070	6050070
12	1	SADDLE	6050071	6050071	6050071
13	2	COUPLER	40858	40858	40858
14	2	DUST CAP	CR215	CR215	CR215
		150 TON SEAL KIT	54296	54296	54296

NOTE:
SEAL KIT PART #54295 INCLUDES
ITEM #'S: 1, 2, 6, 7, 8, 9, AND 10

NOTE:
SEAL KIT PART #54296 INCLUDES
ITEM #'S: 1, 2, 6, 7, 8, 9, AND 10

TK PART NO.	DESCRIPTION
45218	100 TON C.H./D.A. 2" STROKE
45219	100 TON C.H./D.A. 4" STROKE
45220	100 TON C.H./D.A. 6" STROKE
45221	100 TON C.H./D.A. 10" STROKE

TK PART NO.	DESCRIPTION
45222	150 TON C.H./D.A. 2" STROKE
45223	150 TON C.H./D.A. 6" STROKE
45224	150 TON C.H./D.A. 10" STROKE



SIMPLEX products are warranted to be free of defects in materials and workmanship under normal use for as long as the original purchaser owns them, subject to the guidelines and limitations listed. This warranty does not cover: normal wear & tear, cosmetic items, abuse, overloading, alterations, improper fluid, or use in a manner for which they are not intended. If the customer believes a product is defective, the product must be delivered, or shipped freight prepaid, to the nearest SIMPLEX Authorized Service Center for evaluation and repair.

2525 GARDNER ROAD * BROADVIEW * ILLINOIS * 60155 * PHONE (708) 865-1500 * FAX (708) 865-0894