

Specifications

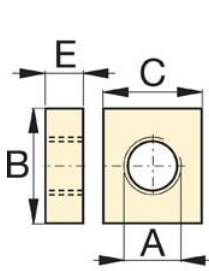
Units: **Imperial** Metric

For Use with Cylinder Capacity (imperial tons)	10
Cylinder Series Compatibility	RC

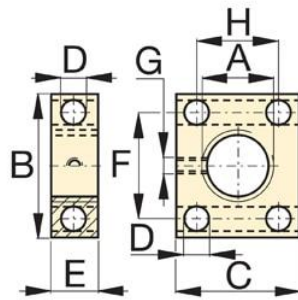
Dimensions

Units: **Imperial** Metric

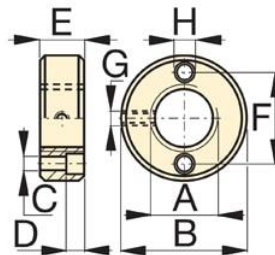
Mounting Block Dimension A (in)	2 1/4" - 14
Mounting Block Dimension B (in)	4.5
Mounting Block Dimension C (in)	3.5
Mounting Block Dimension E (in)	1



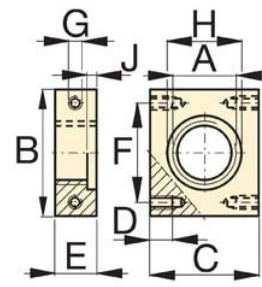
**RB-5, -10
RB-15, -25**



AW-51



AW-53



AW-102 (J=.19)