

Specifications

Units: **Imperial** Metric

For Use with Cylinder Capacity (imperial tons) 15

Cylinder Series Compatibility RC

Dimensions

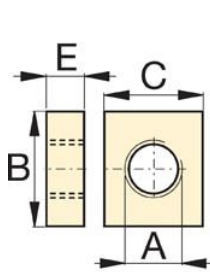
Units: **Imperial** Metric

Mounting Block Dimension A (in) 2 3/4" - 16

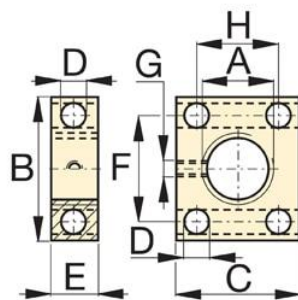
Mounting Block Dimension B (in) 4

Mounting Block Dimension C (in) 4.5

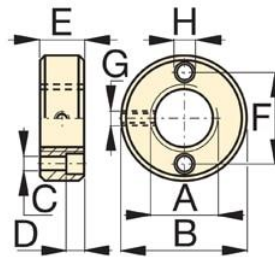
Mounting Block Dimension E (in) 1.5



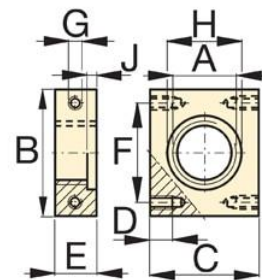
RB-5, -10
RB-15, -25



AW-51



AW-53



AW-102 (J=.19)