

Specifications

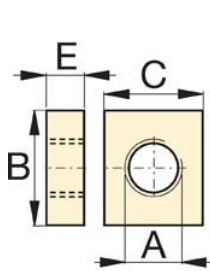
Units: **Imperial** Metric

For Use with Cylinder Capacity (imperial tons)	5
Cylinder Series Compatibility	RC
Compatible Products	RC51, RC53, RC55, RC57, RC59

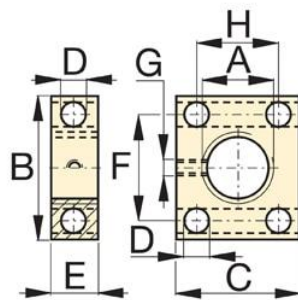
Dimensions

Units: **Imperial** Metric

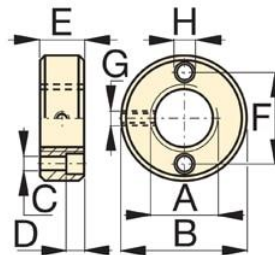
Mounting Block Dimension A (in)	1 1/2" - 16
Mounting Block Dimension B (in)	3.5
Mounting Block Dimension C (in)	3
Mounting Block Dimension E (in)	1



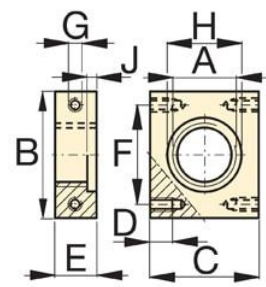
RB-5, -10
RB-15, -25



AW-51



AW-53



AW-102 (J=.19)